

**REPORT OF THE
VIRGINIA STATE CRIME COMMISSION**

**COST EFFECTIVENESS OF
PUBLIC DEFENDER OFFICES**

**TO THE GOVERNOR AND
THE GENERAL ASSEMBLY OF VIRGINIA**



HOUSE DOCUMENT NO. 46

**COMMONWEALTH OF VIRGINIA
RICHMOND
1997**



COMMONWEALTH of VIRGINIA

VIRGINIA STATE CRIME COMMISSION

John R. Isom
Executive Director

General Assembly Building

MEMBERS:
FROM THE SENATE OF VIRGINIA:
Janet D. Howell, Vice-Chair
Mark L. Earley
Kenneth W. Stolle

FROM THE HOUSE OF DELEGATES:
Clifton A. Woodrum, Chairman
James F. Almand
Jean W. Cunningham
John J. Davies, III
Raymond R. Guest, Jr.
William S. Moore, Jr.

APPOINTMENTS BY THE GOVERNOR:
Robert C. Bobb
Terry W. Hawkins
Robert J. Humphreys

ATTORNEY GENERAL'S OFFICE
James S. Gilmore, III

December 10, 1996

To: The Honorable George Allen, Governor of Virginia,
and Members of the General Assembly:

House Joint Resolution 79 directed the Virginia State Crime Commission to study the cost effectiveness of public defender offices, and to submit our findings and recommendations to the Governor and the 1997 session of the General Assembly.

In fulfilling this directive, a study was conducted by the Virginia State Crime Commission in 1996. I have the honor of submitting herewith the study report.

Respectfully submitted,

A handwritten signature in cursive script, reading "Clifton A. Woodrum".

Clifton A. Woodrum
Chairman

MEMBERS OF THE VIRGINIA STATE CRIME COMMISSION

From the Senate of Virginia

Janet D. Howell, Vice Chair
Mark L. Earley
Kenneth W. Stolle

From the House of Delegates

Clifton A. Woodrum, Chairman
James F. Almand
Jean W. Cunningham
John J. Davies, III
Raymond R. Guest, Jr.
William S. Moore, Jr.

Appointments by the Governor

Robert C. Bobb
Terry W. Hawkins
Robert J. Humphreys

Attorney General

James S. Gilmore, III

Law Enforcement Subcommittee

Senator Janet D. Howell, Subcommittee Chair
Delegate James F. Almand
Mr. Robert C. Bobb
Senator Mark L. Early
Mr. James S. Gilmore
Mr. Robert J. Humphreys
Delegate William S. Moore, Jr.

Staff

John R. Isom, Executive Director
Rich Savage, Counsel

HJR 79 – COST EFFECTIVENESS OF PUBLIC DEFENDER OFFICES

TABLE OF CONTENTS

I.	Authority for the Study	1
II.	Members Appointed to Serve	1
III.	Executive Summary and Recommendation	2
IV.	Background	3
V.	Findings and Recommendations	16
VI.	Acknowledgements	17

APPENDICES

Appendix A: HJR 79

Appendix B: Rate of compensation provided to court appointed counsel for indigent defendants in other states.

Appendix C: Various methods for providing counsel for indigents in other states.

Appendix D: Percentage of cases handled by the public defender offices; Cost or savings of specific public defender offices.

Appendix E: Operational costs for each public defender office in FY 1996.

Appendix F: Combined savings of the public defender offices over the previous seven years.

Appendix G: Results from the statistical sampling for the average experience and pay per year for court appointed counsel.

I. Authority for the Study

During the 1996 legislative session, Delegates McDonnell, Crowshaw, Drake, and Jones and Senators Schrock and Stolle sponsored House Joint Resolution 79 directing the Virginia State Crime Commission to study the cost effectiveness of public defender offices.

Section 9-125 of the Code of Virginia establishes and directs the Virginia State Crime Commission to "study, report, and make recommendations on all areas of public safety." Section 9-127 of the Code of Virginia provides that "the Commission shall have the duty and power to make such studies and gather information in order to accomplish its purpose, as set forth in Section 9-125, and to formulate its recommendations to the Governor and the General Assembly." The Virginia State Crime Commission, in fulfilling its legislative mandate, undertook the study of the cost effectiveness of public defender offices.

II. Members Appointed to Serve

At the May 1996 meeting of the Crime Commission, Chairman Clifton A. Woodrum of Roanoke appointed Janet D. Howell to serve as Chair of the Law Enforcement Subcommittee studying the cost effectiveness of public defender offices. The following Members were selected to serve on the subcommittee:

Senator Janet D. Howell, Reston, Chair
Mr. James F. Almand, Arlington
Mr. Robert C. Bobb, Richmond
Senator Mark L. Early, Chesapeake
Mr. James S. Gilmore, III, Attorney General of Virginia
Mr. Robert J. Humphreys, Virginia Beach
Delegate William S. Moore, Portsmouth

III. Executive Summary

Information for the Crime Commission's study concerning public defender offices was collected through the use interviews, informal working groups, and discussions with representatives of the Virginia Supreme Court, the Public Defender Commission and the Virginia State Bar. Dr. James Creech, of the Virginia Criminal Sentencing Commission, provided the technical assistance for the creation of a statistical database containing information regarding court appointed counsel for indigent defendants. The Commission made the following recommendations:

- The Crime Commission should introduce a joint resolution requesting the Supreme Court in conjunction with the Public Defender Commission to study the system by which counsel is assigned to indigent defendants in Virginia. The study should:
 - 1.) evaluate if the jurisdictions of the Commonwealth are employing a "fair system of rotation among members of the bar"; and
 - 2.) include detailed descriptions of the mechanisms that both the courts and the public defender offices use to assign counsel to indigent cases.

- Statutory caps for court-appointed counsel should be raised to provide reasonable compensation for court-appointed counsel.

IV. Background

Every person accused of a crime has a right to have counsel aid him in making his defense.... If a prisoner is unable to employ counsel, the court may appoint some one to defend him, and it is the duty which counsel owes to his profession, to the court engaged in trial, to the administration of justice, and to humanity, not to withhold his aid, nor spare his best efforts in the defense of one "who has the double misfortune to be stricken with poverty and accused of a crime." ¹

Virginia Supreme Court -1895

A. Providing indigent counsel - Historical provisions

Long before the United States Supreme Court recognized that the Sixth Amendment right to counsel applied to indigent defendants in state court proceedings,² the Virginia General Assembly, by 1849, was authorizing the appointment of counsel in felony cases for people unable to pay.³ In 1895, the Virginia Supreme Court intimated that the provision of counsel was a necessity for a fundamentally fair trial.⁴ By 1940, the Virginia General Assembly inserted within the Code the right to counsel for all felony prosecutions commenced in a court of record.

Reinforcing the previous one hundred and fourteen years of Virginia statutory provisions, the United States Supreme Court, in Gideon v. Wainwright,⁵ held that the right to counsel for indigent defendants faced with serious criminal charges was a fundamental right which applied to the states through the Fourteenth Amendment. The Gideon precedent was then expanded in 1972, to include the provision of counsel for all crimes in which the defendant could face jail time,⁶ and

¹ Barnes v. Commonwealth, 92 Va. 794, 803 (1895).

² See Gideon v. Wainwright, 372 U.S. 335 (1963).

³ Code of Virginia, Chap 212 § 4 (1849). The cap on counsel fees in these felony cases was \$25.00.

⁴ 92 Va. 794.

⁵ 372 U.S. 335 (1963).

⁶ Argersinger v. Hamlin, 407 U.S. 25 (1972).

again expanded in 1979 to include the provision of counsel for appellate defense.⁷

The Code of Virginia currently provides for the appointment of counsel for indigent defendants in sections 16.1-266 through 16.1-268, and sections 19.2-157 through 19.2-163. These sections restrict the right to be represented by court appointed counsel to those situations where the defendant is both indigent and either faces actual incarceration or is an adult who may be subject to losing their parental rights by court order. The fees for counsel in these cases are paid by state funds and are governed by statute.⁸

Virginia pays court appointed counsel according to the following schedule:

Circuit Court

• Felonies punishable by death	Reasonable amount
• Felonies punishable by more than 20 years	\$ 575.00
• All other felonies	\$ 265.00
• Misdemeanors	\$ 132.00

District Court

\$ 100.00

The current statutory scheme places Virginia among the lowest paying jurisdictions in the Nation for court appointed indigent work.⁹

B. How other states handle indigent defendants

Although the United States Supreme Court has interpreted the Sixth Amendment to require the appointment of counsel for indigents charged with a jailable offense, the exact methods and procedures for providing counsel have not been specified. Consequently, each state has adopted different methods and procedures for providing counsel to indigent defendants. These various methods can be grouped into three main models: public defender model, assigned counsel model, and contract model.¹⁰

⁷ Scott v. Illinois, 440 U.S. 367 (1979).

⁸ See Code of Virginia § 19.2-163.

⁹ For a summary of the methods and rates of payment in the other states see Appendix B.

¹⁰ See Bureau of Justice Statistics Selected Findings, United States Department of Justice, February 1996; see also, The American Bar Association, Indigent Defense Crisis, Richard Klein and Robert Spangenburg, 1993.

- The Public Defender programs - The public defender programs are public or private nonprofit organizations with full or part-time staff. Generally, an individual is appointed by the governor, a commission, a council, or a board to develop and maintain a system of representation for the counties within a state. Approximately 30 states employ a version of this model.
- The Assigned Counsel programs - Assigned counsel programs are programs where the court appoints private attorneys from a list of available attorneys. Typically there are two types of assigned counsel systems: an ad hoc system and a coordinated assignment system. Most of the States that do not use a public defender system follow an assigned counsel model.
- Contract programs - Contract programs involve a contract between a jurisdiction and an attorney, group of attorneys, bar association, or non-profit organization that agrees to provide the services over a contract period of time. Only a few states employ such a system.
- Hybrid system - Most states have provisions for hybrid systems, particularly those states with public defender systems where conflicts arise. In a hybrid system several of the above models are employed by the state to handle indigent cases.

For a more detailed listing of the states and the types of models they employ, see Appendix C.

C. The Virginia system for indigent defendants

Traditionally, Virginia provided counsel to indigents through a court appointment system. However in 1971, the General Assembly instituted an alternative method for providing legal counsel to indigents by creating the Public Defender Commission.¹¹ Today, Virginia is served by both methods, with some localities being served by full-time public defender offices and others being served by court appointed counsel. However, even within the jurisdictions served by public defender offices, some cases, such as conflicts or overflow, are handled by the traditional court appointment method.

For the percentage of cases in specific public defender jurisdictions that were referred out of the office and handled by court appointed counsel during fiscal year 1996, see Appendix D. Both the public defender system and the court appointed system are explained below.

¹¹ § 19.2-163.1

1. The Public Defender Commission and offices

a. Legislative History

In 1971, the Criminal Law Section of the Virginia State Bar recommended that a "pilot" program of public defender offices be established as an alternative means of providing legal counsel for indigent defendants.¹² During the 1972 session of the General Assembly, legislation was enacted that established a Public Defender Commission. The Commission was to develop a system to provide legal services to indigent defendants charged with a jailable offense. The Commission opened the first office in 1972, serving Augusta County and the Cities of Stanton and Waynesboro. The Commission selected Virginia Beach as the location of the second office and opened that office in 1973. By 1976, the Commission fulfilled its original mandate when the City of Roanoke was chosen as the third location for the establishment of a public defender office.

After favorable reports were received by the General Assembly on all three offices, Code § 19.2-163.1 was amended to provide for two additional offices. The City of Petersburg became the fourth office to open in 1979. Although the Commission considered several other localities as appropriate locations for an office, the lack of funds delayed the opening of a fifth office.

The 1985 General Assembly created House and Senate Joint Subcommittees to study the methods of providing of legal services to indigent defendants.¹³ Both of the Joint Subcommittees recommended the establishment of a public defender office to serve the City of Portsmouth. Funding was approved for both a Portsmouth office and a Richmond office. These offices were opened in 1986.

In both the 1987 and 1988 sessions of the General Assembly, legislation was passed to provide for the expansion of the public defender offices throughout the Commonwealth. In 1987, offices were opened in the following jurisdictions: Alexandria, Fairfax (serving both the County and City), Winchester (serving Clarke and Frederick Counties), Leesburg (serving Fauquier, Loudoun, and Rappahannock). In 1988, Warren, Shenandoah, and Page Counties were added to the coverage of the Winchester office and the Pulaski office opened (serving the Counties of Bland, Pulaski, and Wythe and the City of Radford). In 1989 offices were opened in Bedford (serving both the City and County), The City of Franklin (serving Southampton and Isle of Wight Counties), and the City of Suffolk. Three offices opened in 1990:

¹² Interview with Overton Pollard, Director Public Defender Commission (June 1996).

¹³ H.J.R. 324; S.J.R. 137 (1985)

Danville, Fredericksburg (serving Spotsylvania and Stafford County), and Halifax (serving Lunenburg and Mecklenburg counties). A Lynchburg Office was opened in 1991 and the coverage of the Staunton office was increased to include Rockbridge County and the Cities of Lexington and Buena Vista. By 1992, the last of the current offices came on-line with the opening of the Martinsville office (serving Henry County) and the addition of King George County to the coverage of the Fredericksburg office.

The 1996 General Assembly passed legislation that would have established an office in the City of Charlottesville and Albemarle County, however, the Governor vetoed the legislation establishing the office and stated "I remain unconvinced of the need for, or the benefit to be derived, from, establishment of a public defender's office for the City of Charlottesville and Albemarle County."¹⁴

b. Operation of the offices

Each public defender office is under the control and supervision of a full time Public Defender who is selected by the Commission.¹⁵ Section 19.2-163.2 authorizes the Public Defender to "employ such staff" and "secure such office space as needed." All of the offices have assistant public defenders, ranging from one in Bedford to twenty-one in Richmond. Each office has at least one investigator and some of the larger offices have a sentencing specialist.¹⁶

The salary range for all offices is as follows: for an assistant public defender, \$32,749 - \$65,323, for a deputy public defender, \$46,770 - \$71,410, and for the public defender, \$66,694 - \$99, 678.

The average attorney in the offices handled 742 charges from 422 defendants during the 1995 fiscal year. During the 1995 fiscal year, the offices represented approximately 59,000 defendants on 104,000 charges at a total cost of \$11,600,000.00.¹⁷

2. The Virginia Court Appointed System

In those jurisdictions not served by a public defender office, Virginia's traditional,

¹⁴ The House of Delegates Calendar, Reconvened Session 1996.

¹⁵ § 19.2-163.3(2) states that each public defender "shall devote his full time to his duties and not engage in the private practice of law."

¹⁶ A sentencing specialist is a person who prepares plans for alternatives to incarceration for selected defendants and collects mitigation evidence in capital cases.

¹⁷ Detailed fiscal year 1996 operational costs of each office are contained in Appendix E.

court appointed system is in place. The Code provides that "whenever a person charged with a criminal offense the penalty for which may be death or confinement in the state correctional facility or jail ... appears before any court without being represented by counsel, the court shall inform him of his right to counsel."¹⁸ The Virginia Supreme Court has also stated that when § 19.2-157 is coupled with §19.2-326, the Code provides an indigent defendant with a statutory right to counsel at both appellate levels.¹⁹ Once the accused is informed of his right to counsel he can either employ counsel, waive counsel, or seek indigency status and either be served by the public defender office or court appointed counsel.

a. Seeking Indigency Status

If an accused asks for court appointed counsel, the court must determine if the defendant is eligible for such an appointment. Code § 19.2-159 specifies the basic procedure, "the court shall determine from oral examination of the accused or other competent evidence whether or not the accused is indigent within the contemplation of the law pursuant to the guidelines set forth in this section." The Code guidelines for determining indigency are as follows:

1. Presumption of indigency - A defendant is rebuttably presumed indigent if they receive state or federal public assistance.
2. Financial resources calculation - If the defendant requests counsel but is not presumptively eligible, then the court must undertake a "thorough examination of the financial resources of the accused." The Code specifies what assets shall be considered and the formula for determining indigency based on the court's asset determinations.
3. Exceptional circumstances calculation- If the court determines that the funds of the accused place him outside the poverty level, the court still has discretion, in "exceptional circumstances" where "the ends of justice so require," to appoint an attorney for the accused.

The accused must prepare two written statements, one certifying that he is indigent and one detailing his financial status; these become part of the court record in the case.

¹⁸ § 19.2-157.

¹⁹ See Dodson v. Director of Dep't of Cors., 233 Va. 303, 355 S.E.2d 573 (1987).

b. The Supreme Court's fair system of rotation for court appointment

If the court finds the defendant meets the statutory definition of indigency, the enabling language of § 19.2-159 provides:

[e]xcept in jurisdictions having a public defender pursuant to Article 4 (§ 19.2-163.1 et seq.) of Chapter 10 of Title 19.2, counsel appointed by the court for representation of the accused shall be selected by a fair system of rotation among members of the bar practicing before the court whose practice regularly includes representation of persons accused of crimes and have indicated their willingness to accept such appointments.

The Office of the Executive Secretary of the Virginia Supreme Court publishes a manual which guides the lower courts with the process and procedure when appointing counsel. Jurisdictions are given discretion when determining exactly how individual attorneys will be appointed to individual cases.

For fiscal year 1995, payments dispersed for court-appointed counsel totaled \$25,098,958.88. This number represents 181,374 payments for 140,712 indigent defendants. For fiscal year 1996, payments dispersed for court-appointed counsel totaled \$26,737,484.72. This number represents 203,186 payments for 147,633 indigent defendants.

D. Cost or savings of the Public Defender Offices

Each year the Public Defender Commission compiles and submits the costs associated with each office to the Virginia Supreme Court.²⁰ The Office of the Executive Secretary uses these figures to generate an annual cost list for the individual offices throughout the Commonwealth. Additionally, the Office generates a hypothetical cost comparison figure for each jurisdiction that has a public defender office. The cost or savings calculation demonstrates what the cost or savings would be to the Commonwealth if a particular public defender office did not exist in that jurisdiction. For determining this amount, the Supreme Court uses a case amount based on the average cost per case that the Court paid court appointed counsel within that jurisdiction for each misdemeanor, felony, or appellate case. For the cost or savings figures for fiscal year 1996, see Appendix D.

²⁰ For an office by office listing of the costs associated with individual offices, see Appendix E.

Due to case-load fluctuations and capital equipment costs, the cost or savings of each individual office fluctuates from year to year. However, for all offices during fiscal year 1996, the estimated net savings to the Commonwealth was \$1,672,564.00.²¹

E. Experience level of court appointed counsel

During the course of this study, a database was created from existing data at the Supreme Court and existing data at the Virginia State Bar Association (VSB) in order to determine the level of experience of the counsel handling court appointed cases. The Supreme Court's database contained all the payments made to court appointed counsel during a given year and the VSB database contained the number of years that each attorney has been practicing in Virginia. However, neither database contained the experience level of the attorneys who were accepting and receiving payment for court appointed work. By combining the two databases, a master list was created which contained all payments to all counsel in Virginia and the number of years that each attorney had been licensed to practice in Virginia. A statistically reliable sample was then drawn from the data base to determine the experience level of the attorneys who were accepting court appointed work.²² Using a sample size of 416, the following results were obtained:

Years of experience for court-appointed attorneys in Virginia²³

	FY 95	FY 96
Mean	13.9	12.1
Median	11.8	12.1
Mode	3.8	6.7

²¹ For the savings over the previous seven years, see Appendix F.

²² For an explanation of the process used to draw the sample and the complete results of the analysis, see Appendix G.

²³ Experience is measured by the number of years from the date the attorney passed the bar examination through June 30 of the corresponding fiscal year.

V. Findings and Recommendations

A. Finding: Virginia's compensation rates for court appointed counsel are among the lowest of any state in the Nation.

B. Finding: The percentage of cases handled by the public defender offices varies widely from jurisdiction to jurisdiction. Several jurisdictions report that only 50 - 60 % of the indigent cases for that area are being handled by the local public defender offices.

C. Finding: Of the 19 public defender offices, the Supreme Court reports that in fiscal year ended June, 1996, 10 offices were operated at a savings to the state, while 9 offices were operated at a cost to the state. The net savings to the state was \$1,672,564.00.

Recommendations:

- The Crime Commission should introduce a joint resolution requesting the Supreme Court in conjunction with the Public Defender Commission to study the system by which counsel is assigned to indigent defendants in Virginia. The study should:
 - 1.) evaluate if the jurisdictions of the Commonwealth are employing a "fair system of rotation among members of the bar"; and
 - 2.) include detailed descriptions of the mechanisms which both the courts and the public defender offices use to assign individual counsel to indigent cases.
- Statutory caps for court-appointed counsel should be raised to provide reasonable compensation for court-appointed counsel.

VI. Acknowledgements

The members extend a special thanks to the following agencies and individuals for their assistance to this study effort:

The Virginia Supreme Court
Office of the Executive Secretary
Mr. Charles Word, Director Fiscal Services
Ms. Patricia Ketner, Budget/Grants Administrator
Mr. Larry Davidson, Accounts Payable Administrator

Public Defender Commission
Mr. Overton P. Pollard, Executive Director
Ms. Bonnie Farrish, Fiscal Director
Ms. Kelley Alzuro, Planning and Research Director

Virginia Criminal Sentencing Commission
Dr. Richard P. Kern, Director
Dr. James C. Creech

Virginia State Bar Association

Appendix A

1996 SESSION
ENGROSSED

960288350

HOUSE JOINT RESOLUTION NO. 79

House Amendments in [] —February 1, 1996

[~~Requesting~~ Directing] the Virginia State Crime Commission to study the cost-effectiveness of public defender offices versus court-appointed counsel and the level of court-appointed counsel [for indigent defendants] fees.

Patrons—McDonnell, Croshaw, Drake and Jones, J.C.; Senators: Schrock and Stolle

Referred to Committee on Rules

WHEREAS, although the entire criminal justice system is suffering from a lack of adequate resources, the current level of funding for indigent defense has reached a crisis level; and

WHEREAS, in 1982, 48 percent of all state felony defendants were indigent, but by 1994, this figure was probably closer to 80 percent, resulting in an increase in the number of indigent defendants over the last 10 years that has far outrun any increase in defense funding; and

WHEREAS, state legislatures, Virginia's among them, have spent the last 10 years increasing the severity of sentences, creating new crimes, and imposing mandatory minimum sentences, all of which have depleted the time and money available for indigent defense; and

WHEREAS, a significant number of Virginia's localities are now served by public defender offices; and

WHEREAS, court-appointed counsel is often compensated at extremely low levels while the compensation for attorneys accepting appointments as guardians ad litem is not limited; and

WHEREAS, there is a need to evaluate the cost-effectiveness of the public defender system and the court-appointed attorney system throughout the Commonwealth and a need to review the level at which court-appointed counsel are compensated; now, therefore, be it

RESOLVED by the House of Delegates, the Senate concurring, That the Virginia State Crime Commission be [~~requested~~ directed] to study the cost-effectiveness of public defender offices versus court-appointed counsel for indigent defendants and the level of court-appointed counsel fees, including alternative revenue sources.

The Commission shall complete its work in time to submit its findings and recommendations to the Governor and the 1997 Session of the General Assembly as provided in the procedures of the Division of Legislative Automated Systems for the processing of legislative documents.

Official Use By Clerks

Passed By

The House of Delegates

- without amendment
- with amendment
- substitute
- substitute w/amdt

Passed By The Senate

- without amendment
- with amendment
- substitute
- substitute w/amdt

Date: _____

Date: _____

Clerk of the House of Delegates

Clerk of the Senate

000288350

00/70

Appendix B

Appendix C

RATES OF COMPENSATION FOR NON-CAPITAL FELONIES
(1995)

STATE	HOURLY RATE in/out court	MAXIMUM
ALABAMA	\$20 / 40	\$1,000
ALASKA	\$50 / 60	\$4,000
ARIZONA	\$40/ 45	NONE
ARKANSAS	VARIES	NONE
CALIFORNIA	\$45 -85	NONE
COLORADO	\$40 / 50	\$3,500 - 4500
CONNECTICUT	\$20 - 25	NONE
DELAWARE	\$50	\$2,000
D.C.	\$50	\$2,450
FLORIDA	\$20 - 60	\$2,500
GEORGIA	\$35 / 45	NONE
HAWAII	\$40 / 60	\$3,000
IDAHO	\$40/50	NONE
ILLINOIS	\$30 / 40	\$1,250
INDIANA	\$40 / 50	NONE
IOWA	\$45 - 50	NONE
KANSAS	\$50	\$5,000
KENTUCKY	\$25 / 35	\$1,250
MAINE	\$40	\$2,500
MARYLAND	\$30 / 35	\$1,000
MASSACHUSETTS	\$25 / 35	NONE
MICHIGAN	\$40 / 60	VARIES BY CO.
MINNESOTA	\$50	VARIES BY CO.
MISSISSIPPI	\$20 / 30	NONE

MISSOURI	FLAT	\$300 - 1,000
MONTANA	VARIES	NONE
NEBRASKA	\$40 - 80	NONE
NEVADA	\$75	\$2,500
NEW HAMPSHIRE	\$60	\$3,000
NEW JERSEY	\$15 / 22.50	NONE
NEW MEXICO	\$20 / 30	\$4,000
NEW YORK	\$25 / 40	\$1,200
NORTH CAROLINA	\$30 / 40	NONE
NORTH DAKOTA	\$50	NONE
OHIO	\$40 / 50	\$2,000
OKLAHOMA	\$40 / 60	\$3,500
OREGON	\$30 / 55	NONE
PENNSYLVANIA	\$40 / 50	\$4,000
RHODE ISLAND	\$35 - 50	\$5,000
SOUTH CAROLINA	\$40 / 60	\$3,500
SOUTH DAKOTA	\$55	NONE
TENNESSEE	\$40 / 50	\$2,000
TEXAS	VARIES	VARIES
UTAH	\$30 - 75	NONE
VERMONT	\$25	\$1,000
WASHINGTON	\$30 - 50	NONE
WEST VIRGINIA	\$45 / 65	\$3,000
WISCONSIN	\$40 / 50	NONE
WYOMING	\$25 / 50	NONE

STATEWIDE INDIGENT DEFENSE SYSTEMS (updated 7/95)

<u>State/Type of Program</u>	<u>Commission</u>	<u>Commission Duties and Responsibilities</u>	<u>Public Defender - How Selected/Term/Qualifications</u>	<u>Public Defender Duties/Responsibilities</u>
ASKA State Public Defender Agency (Executive Agency, Dept. of Admin.)	None		<p>Apptd. by Gov. from nominations of judicial council. Confirmed by majority of legislature in joint sitting. -4 yr. term; renewal requires legislative confirmation. -Member of bar. -Gov. can remove for good cause.</p>	<p>-Full-time. -No private practice. -Appt., supervise & control asst. PDs & other employees. -Submit annual report to legislature & Supreme Ct. on number & types of cases, dispositions & expenditures.</p>
ASKA Office of Public Advocacy Executive agency, Dept. of Admin.)	None		<p>-Public Advocate. -Apptd. by Gov. -Serves at will of Gov.</p>	<p>-Provides Guardian Ad Litem for abused & neglected children & status offenders -Provides representation in conflict cases from the Alaska PD Agency. -Acts as Public Guardian & conservator for citizens w/ disabilities.</p>

Type of Program

Commission

Commission Duties and Responsibilities

Public Defender - How Selected/Term/Qualifications

Public Defender Duties/Responsibilities

KANSAS
ansas Public Defender
mission
xecutive branch agency)

-7 members apptd. by Gov.
-At least 4 licensed AR
attys.exper.in crim. defense.
-At least 1 county judge.
-At least 1 crim.case trial
judge.
-5 yr. terms.
-Gov.designates 1 member
Chair.
-No more than 2 residents of
some congressional distr.
-No 2 members from same
county.

-Establ. policies & standards
for PD sys.
-Approve budgets for trial
PD offices.
-Require annual reports from
trial PD offices.
-Appts. Exec. Dir.
-Eval.perform. of Exec.Dir.,
Capital, Conflicts &
Appell.Off., Trial PDs &
priv. assigned counsel.
-Maintain list of priv.attys.
willing & qualified to accept
capital case apptmnts.
-Authorize contracts w/trial
PDs.

Exec. Dir.:
-Apptd.by commission.
-Must have exper. in defense
of cap. cases.
-Serves at will of
commission.

-Superv. capital confl. &
Appell. Office.
-Maint. records of oper. of
PD sys.
-Prep. budget for
commission.
-Implements atty. perf.
procedures pursuant to
commission's standards.
-Maint. ct.opinions, statutes,
etc. for use by trial PDs &
ct.apptd. counsel.
-Maint. appell. brief bank.
-Convenes training progr.
related to PD sys.
-Prep. annual rpt.

LIFORNIA
ice of the State Public
ender (Executive
ncy)

None

Director of OSPD apptd. by
Gov.

-Provide appell.
representation to indigents.
-Maint. appell. brief bank.

FLORADO
Office of State Public
Defender Commission
(Agency of Judicial Dept.)

- 5 members.
- No more than 3 from same political party.
- 3 attys/2 non-attorneys.
- No judges, prosecutors, PD's or law enforcement personnel.
- Appointment procedures & term to be established by Supreme Court.

- Supreme Ct. shall provide for apptment, terms & procedures.
- Appt. PD & discharge for cause.

- Apptd. by Commission.
- 5 yr. term/renewable.
- Member of bar 5 yrs. prior to apptmnt.
- Fulltime position.

- Employ & set compensation for all employees.
- Payments approved by S. Ct.
- Establish such regional offices as necessary.

State/Type of Program

Commission

Commission Duties and Responsibilities

Public Defender - How Selected/Term/Qualifications

Public Defender Duties/Responsibilities

CONNECTICUT
Public Defender Services
Commission
(Autonomous body within
Judicial Dept. for fiscal &
budgetary purposes only.)

- Seven members.
- 2 judges apptd. by Chief Justice.
- 1 member apptd. by each: Speaker of House, President Pro Tem of Senate, minority leader of House, minority leader of Senate.
- Chairman apptd. by Gov.
- Term: 3 years.
- No more than 3, other than chairman, from same party.
- 2 of 4 nonjudicial members non-attorneys.
- No PD's.

- Adopt rules for Div. of PD.
- Establ. a compensation plan comparable to state's attorney's.
- Estab. employment standards.
- Appoint Chief PD & Deputy Chief PD.
- Remove PD & Deputy PD for cause following notice & hearing.
- Submit annual report to Chief Justice, Gov. & legisl. by Oct. 15. (see duties of PD).

- Apptd. by Commission
- 4 yr. term.
- Member of state bar for 5 yrs.
- Fulltime position.

- Direct & superv. work of all personnel.
- Submit annual report incl. data & recomms. for changes in law to commission by Sept. 15. (Note extensive list in Sec. 51-291)

LAWARE
ce of the Public Defender
ecutive Agency)

None

-Apptd. by Gov.
-6 yr. term.
-Qualified atty. licensed in
Delaware.

-Appt. asst. attys., clerks,
investigators & other
employees as necessary & set
salaries.
-Determine indigency prior
to arraignment.
-Make annual report.

<u>Site/Type of Program</u>	<u>Commission</u>	<u>Commission Duties and Responsibilities</u>	<u>Public Defender - How Selected/Term/Qualifications</u>	<u>Public Defender Duties/Responsibilities</u>
<p>STRICT OF COLUMBIA D.C. Public Defender vice (Independent ency)</p>	<ul style="list-style-type: none"> -11 member Board of Trustees. -Apptd. by panel of 2 U.S. judges, 2 D.C. judges & Mayor of D.C. -3 year term; not more than 2 consecutive. -No judges. -4 of 11 members non-attorney residents of D.C. 	<ul style="list-style-type: none"> -Establish gen. policy but shall not direct conduct of particular cases. -Submit fiscal yr. report to Congress, chief judges of U.S. Cts. & D.C. Cts. & D.C. Mayor. -Arrange annual independent audit. -Quarterly reports to ct. on matters relating to appointment sys. -Appoint Director & Deputy Director & set their salaries. 	<ul style="list-style-type: none"> -Apptd. by Trustees -Serve at pleasure of Trustees. -Member of D.C. bar. -No private practice. 	<ul style="list-style-type: none"> -Supervise work. -Employ personnel. -Fix compensation not to exceed salary paid to U.S. Attys. & staff.
<p>GEORGIA Georgia Indigent Defense Council (Separate agency within Judicial branch)</p>	<ul style="list-style-type: none"> -15 member council. -Supr. Ct. selects members: 10 lawyers 3 laypersons 2 Co. Commissioners -Selected for 4 yr.terms. 	<ul style="list-style-type: none"> -Recomm. standards & guidelines for local programs. -Administers state funds to local PD programs that comply w/standards. -Support local defenders. -Prov.local atty. w/ techn., clin. help & training. -Prepare budget. 	<p>Director selected by council.</p>	<p>Duties & responsibilities not contained in statute.</p>

<u>State/Type of Program</u>	<u>Commission</u>	<u>Commission Duties and Responsibilities</u>	<u>Public Defender - How Selected/Term/Qualifications</u>	<u>Public Defender Duties/Responsibilities</u>
<p>HAWAII Office of State Public Defender Executive Agency, Dept. of Budget & Finance)</p>	<p>-5 member Defender Council. -Apptd. by Governor. -Serve at Governor's pleasure. -One member from each county. -Chairman selected by members.</p>	<p>-Council shall be governing body of Office of State PD. -Shall appoint PD. -Approve employment decisions of PD.</p>	<p>-Appointed by Council. -4 yr. term. -Qualified to practice law in Hawaii. -Fulltime position.</p>	<p>-Subject to approval of Council: employ asst. PD's, investigators & other support personnel. -Asst. PD's may be parttime & engage in priv. practice other than crim. law.</p>
<p>ILLINOIS Ill. of State Appell. Defender (Agency of the Judicial Dept.)</p>	<p>Bd. of Commissioners. -9 members. -Apptd. by various cts. & bars. -Gov. appts. Chair. -Serves 1 6-yr. term.</p>	<p>-Approve budget. -Advise Appell. PD on policy -Can recommend dismissal of the Appell. PD</p>	<p>-Apptd. by Ill. S.C. -4-yr. term. -Qualified to practice law in IL.</p>	<p>-Provide representation in Crim. appeals. -Establ. offices around the state. -Train & assist trial level defenders.</p>
<p>INDIANA Public Defender of Indiana (state post-conviction public defender) Judicial Agency)</p>	<p>None</p>		<p>-PD apptd. by Supreme Ct. -4 yr. term. -Resident -Practicing lawyer in IN for 3 yrs.</p>	<p>-Represent all indig. defendants in post-conv. proceedings.</p>

<u>State/Type of Program</u>	<u>Commission</u>	<u>Commission Duties and Responsibilities</u>	<u>Public Defender - How Selected/Term/Qualifications</u>	<u>Public Defender Duties/Responsibilities</u>
<p>INDIANA Public Defender Commission Policy board for capital and non-capital representation) Judicial agency)</p>	<p>PD Commission -7 members. -3 apptd. by Gov. -3 apptd. by Chf. Justice. -1 apptd. by Bd. of IN Crim. Justice Institute. -4 yr. terms. -No judges, law enforcement officers or ct. employees -Members designate 1 member Chairman.</p>	<p>-Set standards for indig. defense serv. in capital and non-capital cases. -Adopt guidelines & fee sched. under which counties may be reimb. -Select qualified attys. -Prepare annual report on operation of public defense fund.</p>		
<p>IOWA (independent agency within Executive branch)</p>	<p>None</p>		<p>-Apptd. by Gov. -4 yr. term. -Licensed to practice law in Iowa.</p>	<p>-Oversee all 18 PD offices. -Coord. indig. def. progr (non-PDs) -Contract w/attys. when PD unable to take case.</p>
<p>KANSAS State Board of Indigent Defense Services (Executive branch agency)</p>	<p>-9 members. -Apptd. by Gov. -Confirmed by Senate. -2 from 1st Cong. Dist., 1 of whom is registered KS lawyer. -At least 1 from ea. other Cong. Dist. -1 to 5, from ea. county w/over 100,000 pop. -5 lawyers; 4 non-lawyers. -No members are judicial or law enforcmnt. personnel. -3 yr. terms.</p>	<p>-Appt. Director. -Maint. statistics on indig. defense representation. -Conduct training programs. -Appt. PDs; establ. PD offices. -Enter into contracts w/attys. to provide indig. defense representation. -Enter into contracts w/cities or counties for miscl. representation. -Provide TA to PDs & priv. attys.</p>	<p>Board appts. director. -Licensed in Kansas. -Demonstrated commitment & ability in criminal law.</p>	<p>-CEO of Board. -Supervise operation, policies, procedures of Bd. -Prep. annual report.</p>

ate/Type of Program

Commission

Commission Duties and Responsibilities

Public Defender - How Selected/Term/Qualifications

Public Defender Duties/Responsibilities

KENTUCKY
Dept. of Public Advocacy
Independent State Agency
(within the Executive branch)

-9+ (Deans of law schools).
-4-year term.
-2 members apptd. by Gov.;
1 by speaker; 1 by Pres. of
Senate; 2 by Supreme Ct.; 2
crim. lawyers apptd. by Gov.
from list of 5 submitted by
Bar Assn., 1 apptd. by Gov.
from list submitted by KY
Protection and Advocacy
Advisory Bd.
-No prosecutors or law
enforcement officials.
-Chair elected by
Commission to 1-year term.
-Also a 17-member citizen
advisory bd. apptd. by the
Public Advocate.

-Recommend to Gov. 3 attys.
as nominees for Public
Advocate (PA).
-Assist PA selecting staff.
-Provide gen. superv. of PA
& review performance.
-Engage in public educ. &
generate political support.
-Review & adopt annual
budget.
-Not interfere w/ handling of
cases.

-Public Advocate apptd. by
Gov. from nominees
submitted by Commission.
-Member of Kentucky Bar w/
5 yrs. exper.
-4 yr. term.

-Appt. Deputy PD.
-Appt. asst. PD's & other
personnel.
-Serve as ex officio, non-
voting member of
Commission.
-Appt. 17 member Advisory
Bd. for Protection &
Advocacy Div.

Type of Program

Commission

Commission Duties and Responsibilities

Public Defender - How Selected/Term/Qualifications

Public Defender Duties/Responsibilities

ISIANA
wide Indigent Defender
am (Independent
y within Judicial
h) (Created by
me Ct. Rule)

-7-15 members.
-Apptd. by Chief Justice of
Supreme Ct. w/ concurrence
of majority of justices.
-Renewable 3 yr. terms.
-1 member from ea. of the 6
Supreme Ct. districts.
-1 addit'l. member from 1st
Supreme Ct. district.
-Not more than 3 non-lawyer
members.
-At least 3 experienced
criminal lawyers.

-Members elect Chair.
-Establ. uniform standards &
guidelines for statewide
progr.
-Subdivide state into regions.
-Select most appropriate sys.
for delivery in ea. region.
-Select regional full-time
PDs.
-Set policy for appellate &
capital litigation units.
-Set policy for the Expert
Witness/Testing Fund & the
District Assistance Fund.
-Set standards & guidelines
for district defender bds. to
follow as pre-condition for
receiving Expert Witness/
Testing and District
Assistance Funds.

-Chief Executive Officer
selected by bd.
-Atty. w/ 5 yrs. prior exper.
in crim. practice.
-Board sets term.

-Superv. attys. in the
Appellate Div. & Capital
Litigation programs.
-Manage monies in Expert
Witness/Testing Fund &
District Assistance Fund.
-Assist Bd. in enforcing its
standards and guidelines.

State/Type of Program

Commission

Commission Duties and Responsibilities

Public Defender - How Selected/Term/Qualifications

Public Defender Duties/Responsibilities

MARYLAND
Office of Public Defender
(Executive Agency)

-3 member bd. of Trustees; 2 active attys.
-Apptd. by Gov.
-3 year term.
-Chair designated annually by Trustees.

-Study & observe operation of PD office.
-Coord. activities of district Advisory Bds.
-Appt. PD.
-Advise PD on all relevant matters.

-Apptd. by Bd. of Trustees.
-Term is at pleasure of Trustees.
-Atty. admitted in Maryland + 5 yrs. in practice.

-Appt. Deputy PD w/ Bd. approval.
-Appt. 1 Distr. Defender in ea. judicial distr.
-Appt. asst. PDs w/ advice of Distr. Defenders.
-Appt. other employees.
-Maint. at least 1 office in ea. distr.
-Gen. responsibility for operation of all offices.
-Maint. records.
-Superv. distr. defenders' maint. of local panels of attys.

MASSACHUSETTS
Committee for Public Counsel Services
(Independent Agency)
(Judicial branch for budget purposes only)

-15 members.
-Apptd. by Justices of Supreme Judicial Court.
-3-year term.
-Chair elected by the Committee.

-Establ. standards for public counsel & priv. counsel div.
-Establ. uniform standards of indigency.
-Establ. guidelines for training & for qualification & removal of counsel in public & priv. div.
-Prepare annual report.
-Appt. chief counsel & 2 deputies.
-Extensive list of other duties & responsibilities enumerated by Statute.

Chief Counsel apptd. by Committee.
-Atty.
-Serves at pleasure of Committee.

-Overall superv. of various divisions of committee.
-Perform duties as defined by the committee.
-Authorize all payments certified by judges for priv. counsel.

Type of Program

Commission

Commission Duties and Responsibilities

Public Defender - How Selected/Term/Qualifications

Public Defender Duties/Responsibilities

MICHIGAN
State Appellate Defender
Commission (Agency of
Judicial Branch)

- 7 members apptd. by Gov.
- 2 recmd. by Supreme Ct.
- 1 recmd. by Ct. of Appeals.
- 1 recmd. by MI Judges Assn.
- 2 recmd by State Bar.
- 1 non-atty.
- 4-yr. term.
- No member a sitting judge, prosecutor or law enforcement officer.

- Dev. appell. defense program.
- Dev. standards for program.
- Sets standards.
- Choose Appellate Defender.
- Maint. list of attys. willing & qualified for apptmt. in indig. appell. cases.
- Provide CLE training for attys. on list.

- Appellate Defender chosen by Commission.
- State Appell. Defender can only be removed for cause.

- Provide appell. representation.
- Maint. a manageable caseload.
- Prep. & maint. brief bank avail. to ct. apptd. attys. who provide appell. serv. to indigents.

MINNESOTA
State Board of Public
Defense
(Separate agency within
Judicial Branch)

- 7 members:
- 1 district ct. judge apptd. by Supreme Ct.
- 4 attys. familiar with crim. law but not employed as prosecutors, apptd. by Supreme Ct.
- 2 public members apptd. by Gov.

- Appt. State PD.
- Prepare annual report.
- Recommend budget for Bd., Office of State PD & public defense corps.
- Establ. procedures for distribution of funds for public defense.
- Set standards for state & distr. PDs & ct.-apptd. sys.
- Appt. Chief Admin.

- State PD under superv. of State Bd.
- Apptd. to 4 yr. term.

- Provide appell. & post-conv. proceeding representation in all indig. cases.
- Assist in trial representation in conflict of interest cases.
- Conduct training programs.

<u>State/Type of Program</u>	<u>Commission</u>	<u>Commission Duties and Responsibilities</u>	<u>Public Defender - How Selected/Term/Qualifications</u>	<u>Public Defender Duties/Responsibilities</u>
MISSOURI Office of State Public Defender (Independent Dept. in Judicial Branch)	<p>PD Commission:</p> <ul style="list-style-type: none"> -7 members/4 lawyers; no more than 4 from same party. -Apptd. by Gov. w/ advice & consent of Senate. -6-year term. -State PD is ex-officio member without vote. -Chair elected by members. 	<ul style="list-style-type: none"> Select director & deputies. -Establ. employment procedures. -Review office perform. & monitor director. -Public educ. to insure independence of sys. -Advise on budgetary matters. -Contract w/ priv. attys. -Approve fee sched. for assigned counsel. 	<p>Director apptd. by commission.</p> <ul style="list-style-type: none"> -4 yr. term. -Atty. w/ substantial crim. law exper., also exper. in personal admin. 	<ul style="list-style-type: none"> -Admin. & coord. operation. -Direct & superv. work of employees. -Submit annual report & budget to commission. -Superv. training. -Contract out for legal services w/ approval of commission.
ARIZONA Appell. Public Defender (Independent)	<ul style="list-style-type: none"> -5 member -1 trial level judge, nominated by Judges Assn. -3 attys. nominated by State Bar-must have crim.def.exper. -1 layperson nominated by Gov. -Staggered terms, 1 or 2 yrs. 	<ul style="list-style-type: none"> -Appt. Appell. PD. -Help gather atty. list for apptmts. of counsel at trial & State PC. -Draft crim. def. standards for counsel. 	<ul style="list-style-type: none"> -Hired by Commission. -No term limit. 	<ul style="list-style-type: none"> -Provides representation in state PC or appeals if defendant claims ineffective assistance. -Help in or assume respons. in appeals. -Assume case if trial or Supr.Ct. judge appts.

State/Type of Program

Commission

Commission Duties and Responsibilities

Public Defender - How Selected/Term/Qualifications

Public Defender Duties/Responsibilities

NEBRASKA
(Executive branch agency)
(Proposed statewide
Commission)

Commission for Public
Advocacy
-9 members total.
-Gov. appts. from list
prepared by State Bar.
-6 members from ea. judicial
distr.
-Chair & 2 positions at large
-Non-salaried.
-Qualified attys. w/
crim.def.exper. or
demonstrated commitment.
-Budget from judiciary.

-Ensure adequate funding for
indig.def. programs.
-Dev. standards & guidelines
for all types of delivery
systems.
-Oversee statewide data
collection.
-Provide legal serv. such as
appell. represen., capital
litig.resource ctr. & a major
case resource ctr.
-Select Chief Counsel.

Chief Counsel selected by
Commission.
-Serves at will of
commission.
-5 yrs. NE practice.
-Crim. defense exper., incl.
capital case defense.

-Overall superv. of appell.,
capital & major case units &
litig. support fund.
-Prep. annual report.
-Eval. compliance by
counties to commission
guidelines.
-Conduct training progr.

NVADA
(State Public Defender
Judicial branch agency)

None

-4 yr. term.
-Selected by Gov.
-NV Bar member.

-Etabl. statewide sys. for all
counties who choose to be
part of state sys.
-Oversee activities of these
programs.
-Prep. annual budget.
-Annual report to legisl.

NEW HAMPSHIRE
Judicial Council

State-level Judicial Council:
-15 members - 1 from ea. ct.
level: Supr., Superior, Distr.,
Probate.
-Atty. Gen. ex officio.
-Pres. & VP of NH Bar
Assn. ex officio.
-Representative from
Superior Ct. Clerks.
-7 apptd. by the Gov.
-4 must be attys.

Judicial Council:
-Contract w/ local PD corps.
& individ. attys. for provision
of defense services.
-Gen. superv. of programs in
re: allocation of cases betw.
PD progr. & assigned
counsel; performance of
counsel; competence of
counsel; fiscal & budgetary
matters.

State/Type of Program

Commission

Commission Duties and
Responsibilities

Public Defender - How
Selected/Term/Qualifi-
cations

Public Defender
Duties/Responsibilities

NEW HAMPSHIRE
Public Defender Program
(private non-profit
corporation under contract
with judicial council)

-Corp. PD Bd. of Dir.
9 members.
-3 original in corp.
permanent.
-2 apptd. by Bar, 1 yr. term.
-4 apptd. by Bd.

-Oversee admin. of PD
program.
-Appts. PDs.

-PD is apptd. by Corp. Bd. &
serves at its pleasure.

-Specific responsibilities are
contained in contract w/
judicial council.

NEW JERSEY
Office of the Public Defender
(Executive Agency, Part of
Office of the Public Advocate)

None

-Apptd. by Gov. w/ advice &
consent of Senate.
-5 yr. term.
-Atty. - exper. in practice in
NJ.

-Appt. Deputy & Asst. PDs.
-Appt. support personnel.
-Establ. State PD sys. for all
counties.
-Engage & compensate
assigned counsel.

NEW MEXICO
State Public Defender
Executive Dept.)

None

Apptd. by Gov.
-Atty. active for 5 yrs. prior
to apptmnt. & is exper. in
defense or prosecution.
-Serve at pleasure of Gov.

-Manage all operations of
dept.
-Set fee sched. for assigned
counsel.
-Establ. local PD districts.
-Apptd. Distr. PD's who
serve at his/her pleasure.

NORTH CAROLINA
Appellate Defender Office
Judicial branch agency)

None

Appell. Def. apptd. by Chf.
Justice.

-Provide appell.
representation to indigents.
-Maint. appell. brief bank.
-Prov. CLE training.
-Consult w/attys. rep.
defendants in capital cases.
-Recruit qualif., willing attys.
for state & federal death
penalty post-conv.
proceedings.

State/Type of Program

Commission

Commission Duties and
Responsibilities

Public Defender - How
Selected/Term/Qualifi-
cations

Public Defender
Duties/Responsibilities

NORTH DAKOTA
North Dakota Legal Counsel
for Indigents Commission
Judicial agency)

-7 members.
-Chf. Justice appts.:
-1 county govt.
representative recmd. by ND
Assn of Counties.
-1 judge recmd. by Chf.
Presiding Judge.
-3 recmd. by State bar.
-2 recmd by AG
-3 yr. terms.
-Chf. Justice appts. Chair.
-State Ct. Admin. staff.

-Review cost & casel. data.
-Prep. annual report.
-Prep. budget.
-Provide planning, guidelines
& TA to counties & judicial
distr. re: indig. defense serv.
-Adopt guidelines for indig.
defense serv.
-Review disputed fee
decisions of trial judges.

None

OHIO
Ohio Public Defender
Commission (Independent
Commission within the
Executive branch)

- 9 members.
- Chair apptd. by Gov.
- 4 apptd. by Gov.; 2 of whom
are from ea. political party.
- 4 members apptd. by
Supreme Ct.
- Chair & at least 4 members
are bar members.
- 4 yr. terms.

- Provide, superv., & coord.
legal representation.
- Establ. rules for PD such as
compens., indig. standards &
caseloads.
- Approve budgets.

- Apptd. by Comm.
- Atty w/minimum of 4 yrs.
exper.
- State bar member.

- Appt. Asst. State PD.
- Superv. maintenance of
Commission standards.
- Keep records & financial
info.
- Establ. compensation
procedures.

<u>State/Type of Program</u>	<u>Commission</u>	<u>Commission Duties and Responsibilities</u>	<u>Public Defender - How Selected/Term/Qualifications</u>	<u>Public Defender Duties/Responsibilities</u>
OKLAHOMA Oklahoma Indigent Defense System Bd. (Executive branch agency)	-5 members for 5 yr. terms apptd. by Gov., subj. to advice & consent of Senate -At least 3 lawyers. -Gov. designates Chair.	-Makes policies for indig. defense programs. -Approve budget. -Appl. advisory council of indig. defense attys. -Establ. policies on maximum caseloads. -Appt. Exec. Dir.	-Exec. Director apptd. by Bd. -Serves at pleasure of Bd. -Licensed as OK atty. for 4 yrs. -Exper. in crim. defense.	-Dev. state sys. w/ exception of OK City & Tulsa. -Prepare sys. budget. -Keep list of priv. attys. for capital & non-capital case appointments. -Advisor to indigent defenders. -Act on system's behalf in legisl. efforts. -Conduct training.
OREGON State Public Defender Office (Agency of Judicial branch)	-6 member bd. apptd. by Chf. Justice of Supreme Ct. for 4-yr. terms.	-Makes policy for statewide appeals. -Selects state PD. -Chairman chosen by committee. -Respon. for establ. policy of program.	-Selected by indep. committee under Judicial Branch. -4 yr. term. -Full-time. -No private practice.	-2 levels-appellate (on-staff) & trial (contract provider). -Report to legisl. biannually.
RHODE ISLAND Office of the Public Defender (Agency of Executive branch)	None		-Apptd. by Gov. w/ advice & consent of Senate. -3 yr. term. -Atty. w/ 5 yrs. exper.	-Appt. superv. & direct assistants as necessary. -Dev. & oversee statewide sys. by regions.

State/Type of Program

Commission

Commission Duties and Responsibilities

Public Defender - How Selected/Term/Qualifications

Public Defender Duties/Responsibilities

SOUTH CAROLINA
Office of Indigent Defense
(Independent agency within
Executive branch)

Commission on Indig.
Defense.
-7 members apptd. by Gov.
on recmd. of SC PD Assn.
-1 from ea. Congressional
distr.
-1 from State at-lrge who
serves as Chairmn.
-4-yr. terms.

-Appt. Exec. Dir. of Office of
Indig. Defense.
-Superv. oper. of Office of
Indig. Defense.

-Exec. Dir. apptd. by
commission.

-Administer Off. of Indig.
Defense.
-Distrib. state funds to
counties.
-Compile statistics on indig.
defense statewide.
-Report to Gen. Assmby. on
indig. defense.
-Maint. list of attys. qual. to
accept apptmnts. in death
pen. cases.
-Admin. collection & distrib.
of PD application fees &
surcharge fines imposed on
specified crim. offenses.
-Superv. staff & carry out
requirements of Commission.

State/Type of Program

SOUTH CAROLINA
Office of Appellate Defense
(Independent state agency
within Executive Branch)

Commission

Commission on Appell. Def.:
1. Dean of the Univ. of S.
Carolina Law School;
2. Pres. of the S. Carolina
PD's Assn.;
3. Pres. of the S. Carolina
Bar Assn.;
4. Pres. of the S. Carolina
Trial Lawyers Assn.;
5. Chairman of the S.
Carolina Judicial Council;
6. Chairman of the Senate
Judiciary Comm or his
designee;
7. Chairman of the Judiciary
Comm. of the House of Rep.
or his designee;
-Commission elects
Chairman for 1 yr. term.

Commission Duties and
Responsibilities

-Appt. a Chief Atty.

Public Defender - How
Selected/Term/Qualifi-
cations

-Chief Atty. apptd. by
Commission.
-4-year term.
-Licensed to practice law in
SC.

Public Defender
Duties/Responsibilities

-Submit budget to Comm.
-Establ. training for
employees.
-Rep. indigent defendants in
appeal of a conviction in trial
ct. or decision of any
proceeding in civil
commitment or other
involuntary placement.

State/Type of Program

Commission

Commission Duties and Responsibilities

Public Defender - How Selected/Term/Qualifications

Public Defender Duties/Responsibilities

TENNESSEE
District Public Defenders
Conference (Executive
Branch)

Tenn. Indigent Defense
Commission of the Supreme
Ct. of Tenn.
-11 members apptd. by
Supreme Ct. from
recommendations made by
petitioner orgs. who pushed
for creation of Commission
through Supreme Ct. Rule.
-3 yr. terms.
-Chairperson apptd. by
Supreme Ct.

-Appt. officers.
-Adopt rules for oper. of
Comm.
-Dev. a comprehen. plan for
indigent def. services in state
ct. sys. incl.:
a. Collect case info.
b. Deter. reasonable caseload
for distr. defenders.
c. Set standards for crim. def.
attys. representing indigent
defendants.
d. Set compen. sched. for
assigned counsel.
e. Set annual budget for ct-
apptd. counsel expendit.
f. Dev. voucher review
process.

-Office of Exec. Secy. to
Distr. PD Conference.
-Elected by Conference for 8
yr. term.

-Assist distr. PDs to coord.
their responsibilities.
-Serve as liaison among
various branches of state
govt.
-Prepare budgets for ea. distr.
for submission to state.
-Provide PDs w/ minimum
law libraries.

TAH
Appellate Public Defender's
Office (within judicial branch
for funding purposes only)
(proposed)

Appell. PD Commission
-5 members.
-1 retired judge apptd. by
Judicial Council.
-2 attys. apptd. by State Bar.
-1 atty. apptd. by Minority
Law Section of State Bar.
-1 public member apptd. by
Gov.
-6 yr. terms.

-Appt. Appell. PD.
-Devl policies for Appell. PD
office.
-Approve promotions within
Appell. PD office.

Appell. PD apptd. by Comm.
-Admitted to practice law in
Utah.
-At least 5 yrs. practice.
-Special exper. in appell.
practice & crim. law &
procedure.
-5 yr. term.

-Appt. chief deputy, deputy
appell. PD's & staff.
-Staff should be 8 attys.;
Casef. should be consistent
w/ US Dept. of Justice &
ABA standards.
-Rep. all indigent def. in their
1st appeal of right in felony
crim. cases; file petitions for
cert and amicus briefs.

State/Type of Program

Commission

Commission Duties and Responsibilities

Public Defender - How Selected/Term/Qualifications

Public Defender Duties/Responsibilities

VERMONT
Office of the Defender
General (Agency of Exec.
Branch)

None

Defender General:
-Apptd. by Gov. w/ advice &
consent of Senate.
-4 yr. term.

-Operates program thru PDs
& Deputy PDs or by
contracting out to priv. attys.
-May establ. local offices
headed by a PD.
-Contract out to member of
Bar to serve as assigned
counsel coordinator.

VIRGINIA
Virginia PD Commission
(Agency of Judicial branch)

-9 members.
-Apptd. by Spkr. of House in
consultation w/Senate &
House Cts. of Justice
Committees.
-3 judges, 3 practicing attys.,
3 lay people.
-3 yr. terms.

-Oversee admin. of PD
Commission.
-Select Exec. Dir. & individ.
head PDs.

-Commission selects.
-Serve at pleasure of
Commission.
-Member of Virginia State
Bar and exper.

-Statute sets up office.
-Hire staff.
-Establ. & oversee local PD
offices mandated by state
legislature.

State/Type of Program

WEST VIRGINIA
State Public Defender
Council (State Council:
ndependent)

Commission

-16 members apptd. by
Governor with advice &
consent of Senate.
-No more than 6 attorneys,
no more than 6 non-
attorneys, no state
employees, no more than 9
from same party.

Commission Duties and
Responsibilities

-Contract w/ PD corps. or
other individ. or
organizations for PD
services; establ. auditing div.
to audit & monitor local PD
corps., etc.
-Establ. appellate advocacy
div.
-Establ. crim. law research
ctr.
-Dev. new concepts for
improving programs.
-Eval. proposals of PD corps.
to provide service.
-Recommend improvements
& review & compare
alternative sys. for qual. &
cost.
-Establ. stds. of indigency.

Public Defender - How
Selected/Term/Qualifi-
cations

Exec. Dir. of Council:
-Apptd. by Gov.
-Serves at Gov.'s pleasure.
-Shall be a qualified admin.

Public Defender
Duties/Responsibilities

Exec. Dir. of State Council:
-Broad grant of authority to
effectuate purposes or statute
as directed by council.
-Hire employees of council
as council determines are
necessary.
-Superv. & direct work of
employees.

Type of Program

Commission

Commission Duties and Responsibilities

Public Defender - How Selected/Term/Qualifications

Public Defender Duties/Responsibilities

CONSIN
of the State Public
nder
pendent agency within
utive branch))

-9 members apptd. by Gov.,
approved by Senate.
-At least 5 must be attorneys.
-3 year term.
-Chair is elected by Board.

-Appt. state PD & establ.
salary.
-Approve budget & submit to
Gov.
-Promulgate standards of
indigency.
-Promulgate rules for
assignment of priv. counsel
in re: standards, payments &
pro bono programs.
-Perform all other duties
necessary & incidental.
-Contract w/ fed. agencies &
local PD organizations for
provision of services.

-Apptd. by Bd.
-Member of Wisconsin Bar.
-5 yr. term.

-Superv. operation of all state
& regional PD offices.
-Maint. data & submit
biennial budget to bd.
-Delegate cases to any
member of Wisconsin bar.
-Negotiate contracts out for
representation as directed by
Bd.
-Appt. staff.

WYOMING
Public Defender
utive agency)

None

-State PD apptd. by Gov.
-No term specified.
-Member of Wyoming Bar
w/ exper. in defense or
prosecution.

-Admin. PD program in
district.
-Asst. PDs apptd. by Gov. &
serve at pleasure of PD.
-PD may require them to be
fulltime.
-Oversees operation of PD
sys. statewide & thru regions.
-PD in ea. distr. apptd. by
Gov. upon recommendations
from distr. judge & county
commissioners.

Appendix D

**COMPARISON REPORT
OF THE
PUBLIC DEFENDER OFFICES**

OFFICE OF THE SUPREME COURT

EST. JULY 1, 1987
COMPARISON REPORT
ALEXANDRIA

1993-94

	SUPREME COURT				PUBLIC DEF.				PERCENT SERVED	CHARGES	TOTAL COSTS	AVG COST
	PERCENT SERVED	CHARGES	COSTS	AVG.COST	PERCENT SERVED	CHARGES	COSTS	AVG.COST				
MIS	27%	1,445	144,809	100.21	73%	3,919			100%	5,364		
FEL	21%	455	99,865	219.48	79%	1,712			100%	2,167		
APPEAL	7%	7	6,972	996.00	93%	94			100%	101		
TOTAL	25%	1,907	251,646	131.96	75%	5,725	662,764	115.77	100%	7,632	914,410	119.81

W/O PUB.DEF

5,364	537,547	100.21
2,167	475,621	219.48
101	100,596	996.00
7,632	1,113,764	145.93

SAVINGS(COST)

199,354

1994-95

	SUPREME COURT				PUBLIC DEF.				PERCENT SERVED	CHARGES	TOTAL COSTS	AVG COST
	PERCENT SERVED	CHARGES	COSTS	AVG.COST	PERCENT SERVED	CHARGES	COSTS	AVG.COST				
MIS	21%	980	98,531	100.54	79%	3,642			100%	4,622		
FEL	18%	363	75,578	208.20	82%	1,624			100%	1,987		
APPEAL	17%	22	11,493	522.41	83%	105			100%	127		
TOTAL	20%	1,365	185,602	135.97	80%	5,371	770,155	143.39	100%	6,736	955,757	141.89

W/O PUB.DEF

4,622	464,704	100.54
1,987	413,701	208.20
127	66,346	522.41
6,736	944,751	140.25

SAVINGS(COST)

(11,006)

1995-96

	SUPREME COURT				PUBLIC DEF.				PERCENT SERVED	CHARGES	TOTAL COSTS	AVG COST
	PERCENT SERVED	CHARGES	COSTS	AVG.COST	PERCENT SERVED	CHARGES	COSTS	AVG.COST				
MIS	24%	1,017	102,287	100.58	76%	3,187			100%	4,204		
FEL	15%	356	75,406	211.81	85%	2,081			100%	2,437		
APPEAL	19%	10	5,611	561.10	81%	43			100%	53		
TOTAL	21%	1,383	183,304	132.54	79%	5,311	830,752	156.42	100%	6,694	1,014,056	151.49

W/O PUB.DEF

4,204	422,826	100.58
2,437	516,192	211.81
53	29,738	561.10
6,694	968,757	144.72

SAVINGS(COST)

(45,299)

EST. JULY 1, 1989
COMPARISON REPORT
BEDFORD CITY/CO

1993-94

SUPREME COURT				PUBLIC DEF.				TOTAL				
PERCENT				PERCENT				PERCENT				
SERVED	CHARGES	COSTS	AVG.COST	SERVED	CHARGES	COSTS	AVG.COST	SERVED	CHARGES	COSTS	AVG COST	
	15%	134	11,021	82.25	85%	779		100%	913			
	21%	88	16,382	186.16	79%	327		100%	415			
EAL	38%	3	666	222.00	63%	5		100%	8			
AL	17%	225	28,069	124.75	83%	1,111	191,463	172.33	100%	1,336	219,532	164.32
W/O PUB.DEF												
913 75,091 82.25												
415 77,256 186.16												
8 1,776 222.00												
1,336 154,123 115.36												
SAVINGS(COST)												
(65,409)												

1994-95

SUPREME COURT				PUBLIC DEF.				TOTAL				
PERCENT				PERCENT				PERCENT				
SERVED	CHARGES	COSTS	AVG.COST	SERVED	CHARGES	COSTS	AVG.COST	SERVED	CHARGES	COSTS	AVG COST	
	21%	188	17,844	94.91	79%	724		100%	912			
	23%	198	26,168	132.16	77%	663		100%	861			
	0%	0	300		0%	0		100%	0			
	22%	386	44,312	114.80	78%	1,387	214,747	154.83	100%	1,773	259,059	146.11
W/O PUB.DEF												
912 86,562 94.91												
861 113,791 132.16												
0 300 0.00												
1,773 200,654 113.17												
SAVINGS(COST)												
(58,405)												

1995-96

SUPREME COURT				PUBLIC DEF.				TOTAL				
PERCENT				PERCENT				PERCENT				
SERVED	CHARGES	COSTS	AVG.COST	SERVED	CHARGES	COSTS	AVG.COST	SERVED	CHARGES	COSTS	AVG COST	
	18%	207	16,761	80.97	82%	912		100%	1,119			
	18%	115	13,371	116.27	82%	538		100%	653			
EAL	#DIV/0!	0	0		#DIV/0!	0		100%	0			
AL	18%	322	30,132	93.58	82%	1,450	198,877	137.16	100%	1,772	229,009	129.24
W/O PUB.DEF												
1,119 90,607 80.97												
653 75,924 116.27												
0 0 0.00												
1,772 166,531 93.98												
SAVINGS(COST)												
(62,478)												

EST. MARCH 1, 1990
COMPARISON REPORT
DANVILLE

1993-94

	SUPREME COURT				PUBLIC DEF.				PERCENT SERVED	CHARGES	TOTAL COSTS	AVG COST
	PERCENT SERVED	CHARGES	COSTS	AVG COST	PERCENT SERVED	CHARGES	COSTS	AVG COST				
MIS	20%	201	16,810	83.63	80%	787			100%	988		
FEL	6%	57	8,846	155.19	94%	857			100%	914		
APPEAL	3%	1	4,054	4054.00	97%	34			100%	35		
TOTAL	13%	259	29,710	114.71	87%	1,678	227,333	135.48	100%	1,937	257,043	132.70

W/O PUB.DEF

	988	82,628	83.63
	914	141,846	155.19
	35	141,890	4054.00
	1,937	366,365	189.14

SAVINGS(COST)

109,322

1994-95

	SUPREME COURT				PUBLIC DEF.				PERCENT SERVED	CHARGES	TOTAL COSTS	AVG COST
	PERCENT SERVED	CHARGES	COSTS	AVG COST	PERCENT SERVED	CHARGES	COSTS	AVG COST				
MIS	33%	228	16,571	72.68	67%	456			100%	684		
FEL	6%	78	7,992	102.46	94%	1,270			100%	1,348		
APPEAL	5%	3	3,109	1036.33	95%	55			100%	58		
TOTAL	15%	309	27,672	89.55	85%	1,781	267,718	150.32	100%	2,090	295,390	141.33

W/O PUB.DEF

	684	49,713	72.68
	1,348	138,118	102.46
	58	60,107	1036.33
	2,090	247,938	118.63

SAVINGS(COST)

(47,452)

1995-96

	SUPREME COURT				PUBLIC DEF.				PERCENT SERVED	CHARGES	TOTAL COSTS	AVG COST
	PERCENT SERVED	CHARGES	COSTS	AVG COST	PERCENT SERVED	CHARGES	COSTS	AVG COST				
MIS	29%	242	18,765	77.54	71%	591			100%	833		
FEL	9%	99	14,037	141.79	91%	1,057			100%	1,156		
APPEAL	15%	14	2,246	160.43	85%	80			100%	94		
TOTAL	17%	355	35,048	98.73	83%	1,728	283,627	164.14	100%	2,083	318,675	152.99

W/O PUB.DEF

	833	64,592	77.54
	1,156	163,907	141.79
	94	15,080	160.43
	2,083	243,579	116.94

SAVINGS(COST)

(75,096)

EST. JULY 1, 1987
 COMPARISON REPORT
 FAIRFAX CITY/CO
 REVISED PUBLIC DEFENDER DATA - 9/4/96

1993-94

	SUPREME COURT				PUBLIC DEF.				TOTAL			AVG COST
	PERCENT				PERCENT				PERCENT			
	SERVED	CHARGES	COSTS	AVG. COST	SERVED	CHARGES	COSTS	AVG. COST	SERVED	CHARGES	COSTS	
MIS	49%	4,515	432,258	95.74	51%	4,704			100%	9,219		
FEL	43%	1,830	293,775	160.53	57%	2,445			100%	4,275		
APPEAL	79%	79	53,866	681.85	21%	21			100%	100		
TOTAL	47%	6,424	779,899	121.40	53%	7,170	1,036,320	144.54	100%	13,594	1,816,219	133.60

W/O PUB.DEF

	9,219	882,611	95.74
	4,275	686,278	160.53
	100	68,185	681.85
	13,594	1,637,073	120.43

SAVINGS(COST)
(179,146)

1994-95

	SUPREME COURT				PUBLIC DEF.				TOTAL			AVG COST
	PERCENT				PERCENT				PERCENT			
	SERVED	CHARGES	COSTS	AVG. COST	SERVED	CHARGES	COSTS	AVG. COST	SERVED	CHARGES	COSTS	
MIS	55%	5,515	528,116	95.76	45%	4,522			100%	10,037		
FEL	42%	2,063	301,104	145.95	58%	2,857			100%	4,920		
AL	95%	42	36,906	878.71	5%	2			100%	44		
AL	51%	7,620	866,126	113.66	49%	7,381	1,231,220	166.81	100%	15,001	2,097,346	139.81

W/O PUB.DEF

	10,037	961,142	95.76
	4,920	718,096	145.95
	44	38,663	878.71
	15,001	1,717,902	114.52

SAVINGS(COST)
(379,444)

1995-96

	SUPREME COURT				PUBLIC DEF.				TOTAL			AVG COST
	PERCENT				PERCENT				PERCENT			
	SERVED	CHARGES	COSTS	AVG. COST	SERVED	CHARGES	COSTS	AVG. COST	SERVED	CHARGES	COSTS	
MIS	69%	5,602	533,746	95.28	31%	2,463			100%	8,065		
FEL	37%	2,270	370,794	163.35	63%	3,788			100%	6,058		
APPEAL	73%	67	28,973	432.43	27%	25			100%	92		
TOTAL	56%	7,939	933,513	117.59	44%	6,276	1,354,343	215.80	100%	14,215	2,287,856	160.95

W/O PUB.DEF

	8,065	768,415	95.28
	6,058	989,546	163.35
	92	39,784	432.43
	14,215	1,797,745	126.47

SAVINGS(COST)
(490,111)

**EST. JULY 1, 1988
COMPARISON REPORT
FAUQUIER, LOUDOUN, RAPPAHANNOCK**

1993-94

	SUPREME COURT				PUBLIC DEF.				TOTAL			
	PERCENT SERVED	CHARGES	COSTS	AVG. COST	PERCENT SERVED	CHARGES	COSTS	AVG. COST	PERCENT SERVED	CHARGES	COSTS	AVG. COST
MIS	41%	802	69,160	86.23	59%	1,153			100%	1,955		
FEL	27%	465	69,242	148.91	73%	1,271			100%	1,736		
APPEAL	44%	18	7,027	390.39	56%	23			100%	41		
TOTAL	34%	1,285	145,429	113.17	66%	2,447	264,004	107.89	100%	3,732	409,433	109.71

W/O PUB.DEF

	1,955	168,588	86.23
	1,736	258,503	148.91
	41	16,006	390.39
	3,732	443,098	118.73

SAVINGS(COST)

33,665

1994-95

	SUPREME COURT				PUBLIC DEF.				TOTAL			
	PERCENT SERVED	CHARGES	COSTS	AVG. COST	PERCENT SERVED	CHARGES	COSTS	AVG. COST	PERCENT SERVED	CHARGES	COSTS	AVG. COST
MIS	29%	627	51,027	81.38	71%	1,544			100%	2,171		
FEL	13%	288	55,140	191.46	87%	1,968			100%	2,256		
APPEAL	27%	9	12,014	1334.89	73%	24			100%	33		
TOTAL	21%	924	118,181	127.90	79%	3,536	307,513	86.97	100%	4,460	425,694	95.45

W/O PUB.DEF

	2,171	176,682	81.38
	2,256	431,930	191.46
	33	44,051	1334.89
	4,460	652,663	146.34

SAVINGS(COST)

226,969

1995-96

	SUPREME COURT				PUBLIC DEF.				TOTAL			
	PERCENT SERVED	CHARGES	COSTS	AVG. COST	PERCENT SERVED	CHARGES	COSTS	AVG. COST	PERCENT SERVED	CHARGES	COSTS	AVG. COST
MIS	34%	766	67,556	88.19	66%	1,518			100%	2,284		
FEL	12%	255	57,738	226.42	88%	1,856			100%	2,111		
APPEAL	38%	5	5,978	1195.60	62%	8			100%	13		
TOTAL	23%	1,026	131,272	127.95	77%	3,382	510,078	150.82	100%	4,408	641,350	145.50

W/O PUB.DEF

	2,284	201,433	88.19
	2,111	477,980	226.42
	13	15,543	1195.60
	4,408	694,956	157.66

SAVINGS(COST)

53,606

EST. JULY 1, 1989
COMPARISON REPORT
FRANKLIN, SOUTHAMPTON, ISLE OF WIGHT

1993-94

	SUPREME COURT				PUBLIC DEF.				PERCENT SERVED	CHARGES	TOTAL COSTS	AVG COST
	PERCENT SERVED	CHARGES	COSTS	AVG.COST	PERCENT SERVED	CHARGES	COSTS	AVG.COST				
DIS	17%	134	11,342	84.64	83%	639			100%	773		
REL	24%	219	47,396	216.42	76%	710			100%	929		
APPEAL	35%	7	3,090	441.43	65%	13			100%	20		
TOTAL	21%	360	61,828	171.74	79%	1,362	260,004	190.90	100%	1,722	321,832	186.89

W/O PUB.DEF

773	65,428	84.64
929	201,054	216.42
20	8,829	441.43
1,722	275,311	159.88

SAVINGS(COST)
(46,521)

1994-95

	SUPREME COURT				PUBLIC DEF.				PERCENT SERVED	CHARGES	TOTAL COSTS	AVG COST
	PERCENT SERVED	CHARGES	COSTS	AVG.COST	PERCENT SERVED	CHARGES	COSTS	AVG.COST				
DIS	22%	167	14,109	84.49	78%	592			100%	759		
REL	15%	232	36,564	157.60	85%	1,273			100%	1,505		
APPEAL	63%	15	6,110	407.33	38%	9			100%	24		
TOTAL	18%	414	56,783	137.16	82%	1,874	283,257	151.15	100%	2,288	340,040	148.62

W/O PUB.DEF

759	64,124	84.49
1,505	237,193	157.60
24	9,776	407.33
2,288	311,093	135.97

SAVINGS(COST)
(28,947)

1995-96

	SUPREME COURT				PUBLIC DEF.				PERCENT SERVED	CHARGES	TOTAL COSTS	AVG COST
	PERCENT SERVED	CHARGES	COSTS	AVG.COST	PERCENT SERVED	CHARGES	COSTS	AVG.COST				
DIS	13%	152	13,735	90.36	87%	1,047			100%	1,199		
REL	13%	181	36,238	200.21	87%	1,216			100%	1,397		
APPEAL	40%	6	1,317	219.50	60%	9			100%	15		
TOTAL	13%	339	51,290	151.30	87%	2,272	222,458	97.91	100%	2,611	273,748	104.84

W/O PUB.DEF

1,199	108,344	90.36
1,397	279,693	200.21
15	3,293	219.50
2,611	391,330	149.88

SAVINGS(COST)
117,582

COMPARISON REPORT
FREDERICKSBURG, SPOTSYLVANIA, STAFFORD - JULY 1, 1990
KING GEORGE - JULY 1, 1992

	1993-94				1994-95				TOTAL			
	PERCENT SERVED	CHARGES	COSTS	AVG COST	PERCENT SERVED	CHARGES	COSTS	AVG COST	PERCENT SERVED	CHARGES	COSTS	AVG COST
MIS	25%	1,425	118,311	83.03	75%	4,277			100%	5,702		
FEL	20%	354	48,213	136.19	80%	1,388			100%	1,742		
APPEAL	31%	14	6,795	485.36	69%	31			100%	45		
TOTAL	24%	1,793	173,319	96.66	76%	5,696	403,311	70.81	100%	7,489	576,630	77.00

W/O PUB.DEF			
	5,702	473,410	83.03
	1,742	237,252	136.19
	45	21,841	485.36
	7,489	732,503	97.81

SAVINGS(COST)
155,873

	1994-95				1995-96				TOTAL			
	PERCENT SERVED	CHARGES	COSTS	AVG COST	PERCENT SERVED	CHARGES	COSTS	AVG COST	PERCENT SERVED	CHARGES	COSTS	AVG COST
MIS	36%	2,076	158,994	76.59	64%	3,671			100%	5,747		
FEL	14%	420	69,934	166.51	86%	2,564			100%	2,984		
APPEAL	0%	0	5,642		100%	10			100%	10		
TOTAL	29%	2,496	234,570	93.98	71%	6,245	633,036	101.37	100%	8,741	867,606	99.26

W/O PUB.DEF			
	5,747	440,144	76.59
	2,984	496,864	166.51
	10	5,642	564.20
	8,741	942,650	107.84

SAVINGS(COST)
75,044

	1995-96				1996-97				TOTAL			
	SUPREME COURT				PUBLIC DEF.				TOTAL			
PERCENT SERVED	CHARGES	COSTS	AVG COST	PERCENT SERVED	CHARGES	COSTS	AVG COST	PERCENT SERVED	CHARGES	COSTS	AVG COST	
MIS	29%	1,741	130,678	75.06	71%	4,316			100%	6,057		
FEL	13%	397	60,203	151.64	87%	2,686			100%	3,083		
APPEAL	43%	18	5,538	307.67	57%	24			100%	42		
TOTAL	23%	2,156	196,419	91.10	77%	7,026	634,750	90.34	100%	9,182	831,169	90.52

W/O PUB.DEF			
	6,057	454,633	75.06
	3,083	467,521	151.64
	42	12,922	307.67
	9,182	935,076	101.84

SAVINGS(COST)
103,907

EST. JULY 1, 1990
COMPARISON REPORT
HALIFAX, LUNENBURG, MECKLENBURG

1993-94

SUPREME COURT				PUBLIC DEF.								
PERCENT SERVED	CHARGES	COSTS	AVG COST	PERCENT SERVED	CHARGES	COSTS	AVG COST	PERCENT SERVED	CHARGES	TOTAL COSTS	AVG COST	
	20%	254	17,966	70.73	80%	1,045		100%	1,299			
	22%	294	41,330	140.58	78%	1,019		100%	1,313			
EAL	35%	8	1,584	198.00	65%	15		100%	23			
AL	21%	556	60,880	109.50	79%	2,079	230,695	110.96	100%	2,635	291,575	110.65

W/O PUB.DEF

1,299	91,881	70.73
1,313	184,579	140.58
23	4,554	198.00
2,635	281,014	106.65

SAVINGS(COST)
(10,561)

1994-95

SUPREME COURT				PUBLIC DEF.								
PERCENT SERVED	CHARGES	COSTS	AVG COST	PERCENT SERVED	CHARGES	COSTS	AVG COST	PERCENT SERVED	CHARGES	TOTAL COSTS	AVG COST	
	22%	266	15,948	59.95	78%	958		100%	1,224			
	10%	220	33,027	150.12	90%	2,031		100%	2,251			
	7%	4	11,462	2865.50	93%	57		100%	61			
	14%	490	60,437	123.34	86%	3,046	268,309	88.09	100%	3,536	328,746	92.97

W/O PUB.DEF

1,224	73,385	59.95
2,251	337,926	150.12
61	174,796	2865.50
3,536	586,107	165.75

SAVINGS(COST)
257,361

1995-96

SUPREME COURT				PUBLIC DEF.								
PERCENT SERVED	CHARGES	COSTS	AVG COST	PERCENT SERVED	CHARGES	COSTS	AVG COST	PERCENT SERVED	CHARGES	TOTAL COSTS	AVG COST	
	14%	249	18,010	72.33	86%	1,487		100%	1,736			
	22%	424	45,672	107.72	78%	1,516		100%	1,940			
EAL	14%	9	1,812	201.33	86%	54		100%	63			
AL	18%	682	65,494	96.03	82%	3,057	303,810	99.38	100%	3,739	369,304	98.77

W/O PUB.DEF

1,736	125,564	72.33
1,940	208,971	107.72
63	12,684	201.33
3,739	347,219	92.86

SAVINGS(COST)
(22,085)

EST. JULY 1, 1991
COMPARISON REPORT
LYNCHBURG

1993-94

	SUPREME COURT				PUBLIC DEF.				PERCENT SERVED	CHARGES	TOTAL COSTS	AVG COST
	PERCENT SERVED	CHARGES	COSTS	AVG COST	PERCENT SERVED	CHARGES	COSTS	AVG COST				
MIS	33%	632	54,504	86.24	67%	1,284			100%	1,916		
FEL	16%	445	64,246	144.37	84%	2,338			100%	2,783		
APPEAL	40%	32	9,445	295.16	60%	49			100%	81		
TOTAL	23%	1,109	128,195	115.60	77%	3,671	406,185	110.65	100%	4,780	534,380	111.79

W/O PUB.DEF

1,916	165,237	86.24
2,783	401,790	144.37
81	23,908	295.16
4,780	590,935	123.63

SAVINGS(COST)
56,555

1994-95

	SUPREME COURT				PUBLIC DEF.				PERCENT SERVED	CHARGES	TOTAL COSTS	AVG COST
	PERCENT SERVED	CHARGES	COSTS	AVG COST	PERCENT SERVED	CHARGES	COSTS	AVG COST				
MIS	27%	805	66,097	82.11	73%	2,198			100%	3,003		
FEL	13%	433	63,227	146.02	87%	2,894			100%	3,327		
APPEAL	34%	18	8,004	444.67	66%	35			100%	53		
TOTAL	20%	1,256	137,328	109.34	80%	5,127	478,092	93.25	100%	6,383	615,420	96.42

W/O PUB.DEF

3,003	246,571	82.11
3,327	485,811	146.02
53	23,567	444.67
6,383	755,949	118.43

SAVINGS(COST)
140,529

1995-96

	SUPREME COURT				PUBLIC DEF.				PERCENT SERVED	CHARGES	TOTAL COSTS	AVG COST
	PERCENT SERVED	CHARGES	COSTS	AVG COST	PERCENT SERVED	CHARGES	COSTS	AVG COST				
MIS	24%	703	58,966	83.88	76%	2,203			100%	2,906		
FEL	17%	388	70,243	181.04	83%	1,950			100%	2,338		
APPEAL	26%	20	12,913	645.65	74%	56			100%	76		
TOTAL	21%	1,111	142,122	127.92	79%	4,209	431,090	102.42	100%	5,320	573,212	107.75

W/O PUB.DEF

2,906	243,749	83.88
2,338	423,268	181.04
76	49,069	645.65
5,320	716,086	134.60

SAVINGS(COST)
142,874

EST. JULY 1, 1992
COMPARISON REPORT
MARTINSVILLE/HENRY

1993-94

	SUPREME COURT				PUBLIC DEF.				PERCENT SERVED	CHARGES	TOTAL COSTS	AVG COST
	PERCENT SERVED	CHARGES	COSTS	AVG COST	PERCENT SERVED	CHARGES	COSTS	AVG COST				
S	12%	127	10,041	79.06	88%	934			100%	1,061		
L	14%	171	20,188	118.06	86%	1,070			100%	1,241		
PEAL	60%	26	3,474	133.62	40%	17			100%	43		
TOTAL	14%	324	33,703	104.02	86%	2,021	195,619	96.79	100%	2,345	229,322	97.79

W/O PUB.DEF

1,061	83,886	79.06
1,241	146,511	118.06
43	5,745	133.62
2,345	236,142	100.70

SAVINGS(COST)

6,820

1994-95

	SUPREME COURT				PUBLIC DEF.				PERCENT SERVED	CHARGES	TOTAL COSTS	AVG COST
	PERCENT SERVED	CHARGES	COSTS	AVG COST	PERCENT SERVED	CHARGES	COSTS	AVG COST				
S	14%	156	14,026	89.91	86%	963			100%	1,119		
L	11%	190	19,785	104.13	89%	1,582			100%	1,772		
	16%	8	1,870	233.75	84%	43			100%	51		
	12%	354	35,681	100.79	88%	2,588	245,332	94.80	100%	2,942	281,013	95.52

W/O PUB.DEF

1,119	100,610	89.91
1,772	184,521	104.13
51	11,921	233.75
2,942	297,052	100.97

SAVINGS(COST)

16,039

1995-96

	SUPREME COURT				PUBLIC DEF.				PERCENT SERVED	CHARGES	TOTAL COSTS	AVG COST
	PERCENT SERVED	CHARGES	COSTS	AVG COST	PERCENT SERVED	CHARGES	COSTS	AVG COST				
S	6%	79	5,919	74.92	94%	1,153			100%	1,232		
L	11%	171	18,043	105.51	89%	1,428			100%	1,599		
PEAL	38%	9	1,432	159.11	63%	15			100%	24		
TOTAL	9%	259	25,394	98.05	91%	2,596	347,787	133.97	100%	2,855	373,181	130.71

W/O PUB.DEF

1,232	92,306	74.92
1,599	168,718	105.51
24	3,819	159.11
2,855	264,843	92.76

SAVINGS(COST)

(108,338)

EST. JULY 1, 1979
COMPARISON REPORT
PETERSBURG

1993-94

SUPREME COURT				PUBLIC DEF.				TOTAL				
PERCENT				PERCENT				PERCENT				
SERVED	CHARGES	COSTS	AVG. COST	SERVED	CHARGES	COSTS	AVG. COST	SERVED	CHARGES	COSTS	AVG COST	
MIS	25%	708	63,683	89.95	75%	2,126		100%	2,834			
FEL	27%	837	101,118	120.81	73%	2,286		100%	3,123			
APPEAL	55%	11	6,415	583.18	45%	9		100%	20			
TOTAL	26%	1,556	171,216	110.04	74%	4,421	256,065	57.92	100%	5,977	427,281	71.49
W/O PUB.DEF												
2,834 254,912 89.95												
3,123 377,290 120.81												
20 11,664 583.18												
5,977 643,865 107.72												
SAVINGS(COST)												
216,584												

1994-95

SUPREME COURT				PUBLIC DEF.				TOTAL				
PERCENT				PERCENT				PERCENT				
SERVED	CHARGES	COSTS	AVG. COST	SERVED	CHARGES	COSTS	AVG. COST	SERVED	CHARGES	COSTS	AVG COST	
MIS	26%	635	55,669	87.67	74%	1,794		100%	2,429			
FEL	25%	826	99,908	120.95	75%	2,452		100%	3,278			
APPEAL	61%	14	6,476	462.57	39%	9		100%	23			
TOTAL	26%	1,475	162,053	109.87	74%	4,255	376,547	88.50	100%	5,730	538,600	94.00
W/O PUB.DEF												
2,429 212,945 87.67												
3,278 396,487 120.95												
23 10,639 462.57												
5,730 620,071 108.21												
SAVINGS(COST)												
81,471												

1995-96

SUPREME COURT				PUBLIC DEF.				TOTAL				
PERCENT				PERCENT				PERCENT				
SERVED	CHARGES	COSTS	AVG. COST	SERVED	CHARGES	COSTS	AVG. COST	SERVED	CHARGES	COSTS	AVG COST	
MIS	24%	813	74,537	91.68	76%	2,516		100%	3,329			
FEL	29%	718	89,315	124.39	71%	1,799		100%	2,517			
APPEAL	39%	7	7,209	1029.86	61%	11		100%	18			
TOTAL	26%	1,538	171,061	111.22	74%	4,326	423,929	98.00	100%	5,864	594,990	101.46
W/O PUB.DEF												
3,329 305,207 91.68												
2,517 313,100 124.39												
18 18,537 1029.8												
5,864 636,845 108.60												
SAVINGS(COST)												
41,855												

**EST. JULY 1, 1986
COMPARISON REPORT
PORTSMOUTH**

1993-94

	SUPREME COURT				PUBLIC DEF.				TOTAL				
	PERCENT SERVED	CHARGES	COSTS	AVG. COST	PERCENT SERVED	CHARGES	COSTS	AVG. COST	PERCENT SERVED	CHARGES	COSTS	AVG. COST	
MIS	46%	2,777	273,553	98.51	54%	3,324			100%	6,101			
FEL	20%	629	159,292	253.25	80%	2,568			100%	3,197			
APPEAL	15%	17	13,174	774.94	85%	94			100%	111			
TOTAL	36%	3,423	446,019	130.30	64%	5,986	552,986	92.38	100%	9,409	999,005	106.18	
W/O PUB.DEF													
											6,101	600,989	98.51
											3,197	809,629	253.25
											111	86,018	774.94
											9,409	1,496,636	159.06
SAVINGS(COST)													
													497,631

1994-95

	SUPREME COURT				PUBLIC DEF.				TOTAL				
	PERCENT SERVED	CHARGES	COSTS	AVG. COST	PERCENT SERVED	CHARGES	COSTS	AVG. COST	PERCENT SERVED	CHARGES	COSTS	AVG. COST	
MIS	25%	1,303	125,831	96.57	75%	3,988			100%	5,291			
FEL	10%	623	149,037	239.22	90%	5,553			100%	6,176			
APPEAL	15%	16	9,755	609.69	85%	89			100%	105			
TOTAL	17%	1,942	284,623	146.56	83%	9,630	811,810	84.30	100%	11,572	1,096,433	94.75	
W/O PUB.DEF													
											5,291	510,953	96.57
											6,176	1,477,452	239.22
											105	64,017	609.69
											11,572	2,052,422	177.36
SAVINGS(COST)													
													955,989

1995-96

	SUPREME COURT				PUBLIC DEF.				TOTAL				
	PERCENT SERVED	CHARGES	COSTS	AVG. COST	PERCENT SERVED	CHARGES	COSTS	AVG. COST	PERCENT SERVED	CHARGES	COSTS	AVG. COST	
MIS	18%	374	77,366	88.52	82%	4,099			100%	4,973			
FEL	12%	912	173,924	190.71	88%	6,963			100%	7,875			
APPEAL	7%	11	5,450	495.45	93%	147			100%	158			
TOTAL	14%	1,797	256,740	142.87	86%	11,209	863,860	77.07	100%	13,006	1,120,600	86.16	
W/O PUB.DEF													
											4,973	440,207	88.52
											7,875	1,501,811	190.71
											158	78,282	495.45
											13,006	2,020,300	155.34
SAVINGS(COST)													
													899,700

EST. JULY 1, 1988
COMPARISON REPORT
PULASKI, RADFORD, BLAND, WYTHE

1993-94

SUPREME COURT					PUBLIC DEF.				TOTAL					
PERCENT	SERVED	CHARGES	COSTS	AVG. COST	PERCENT	SERVED	CHARGES	COSTS	AVG. COST	PERCENT	SERVED	CHARGES	COSTS	AVG. COST
MIS	33%	746	51,940	69.62	67%	1,483				100%	2,229			
FEL	46%	494	74,985	151.79	54%	586				100%	1,080			
APPEAL	40%	2	8,908	4454.00	60%	3				100%	5			
TOTAL	37%	1,242	135,833	109.37	63%	2,072	315,815	152.42		100%	3,314	451,648	136.28	
											W/O PUB.DEF			
											2,229	155,193	69.62	
											1,080	163,935	151.79	
											5	22,270	4454.00	
											3,314	341,398	103.02	
SAVINGS(COST)														
(110,250)														

1994-95

SUPREME COURT					PUBLIC DEF.				TOTAL					
PERCENT	SERVED	CHARGES	COSTS	AVG. COST	PERCENT	SERVED	CHARGES	COSTS	AVG. COST	PERCENT	SERVED	CHARGES	COSTS	AVG. COST
MIS	25%	530	46,074	86.93	75%	1,591				100%	2,121			
FEL	32%	516	77,244	149.70	68%	1,109				100%	1,625			
APPEAL	100%	6	1,318	219.67	0%					100%	6			
TOTAL	28%	1,052	124,636	118.48	72%	2,700	332,600	123.19		100%	3,752	457,236	121.86	
											W/O PUB.DEF			
											2,121	184,383	86.93	
											1,625	243,259	149.70	
											6	1,318	219.67	
											3,752	428,960	114.33	
SAVINGS(COST)														
(28,276)														

1995-96

SUPREME COURT					PUBLIC DEF.				TOTAL					
PERCENT	SERVED	CHARGES	COSTS	AVG. COST	PERCENT	SERVED	CHARGES	COSTS	AVG. COST	PERCENT	SERVED	CHARGES	COSTS	AVG. COST
MIS	29%	620	60,962	98.33	71%	1,548				100%	2,168			
FEL	48%	588	90,113	153.25	52%	629				100%	1,217			
APPEAL	93%	13	2,105	161.92	7%	1				100%	14			
TOTAL	36%	1,221	153,180	125.45	64%	2,178	334,442	153.55		100%	3,399	487,622	143.46	
											W/O PUB.DEF			
											2,168	213,170	98.33	
											1,217	186,509	153.25	
											14	2,267	161.9	
											3,399	401,947	118.25	
SAVINGS(COST)														
(85,675)														

EST. JULY 1, 1986
COMPARISON REPORT
PORTSMOUTH

1993-94

	SUPREME COURT				PUBLIC DEF.				TOTAL			
	PERCENT SERVED	CHARGES	COSTS	AVG. COST	PERCENT SERVED	CHARGES	COSTS	AVG. COST	PERCENT SERVED	CHARGES	COSTS	AVG COST
MIS	46%	2,777	273,553	98.51	54%	3,324			100%	6,101		
FEL	20%	629	159,292	253.25	80%	2,568			100%	3,197		
APPEAL	15%	17	13,174	774.94	85%	94			100%	111		
TOTAL	36%	3,423	446,019	130.30	64%	5,986	552,986	92.38	100%	9,409	999,005	106.18

W/O PUB.DEF

	6,101	600,989	98.51
	3,197	809,629	253.25
	111	86,018	774.94
	9,409	1,496,636	159.06

SAVINGS(COST)

497,631

1994-95

	SUPREME COURT				PUBLIC DEF.				TOTAL			
	PERCENT SERVED	CHARGES	COSTS	AVG. COST	PERCENT SERVED	CHARGES	COSTS	AVG. COST	PERCENT SERVED	CHARGES	COSTS	AVG COST
MIS	25%	1,303	125,831	96.57	75%	3,988			100%	5,291		
	10%	623	149,037	239.22	90%	5,553			100%	6,176		
PEAL	15%	16	9,755	609.69	85%	89			100%	105		
TOTAL	17%	1,942	284,623	146.56	83%	9,630	811,810	84.30	100%	11,572	1,096,433	94.75

W/O PUB.DEF

	5,291	510,953	96.57
	6,176	1,477,452	239.22
	105	64,017	609.69
	11,572	2,052,422	177.36

SAVINGS(COST)

955,989

1995-96

	SUPREME COURT				PUBLIC DEF.				TOTAL			
	PERCENT SERVED	CHARGES	COSTS	AVG. COST	PERCENT SERVED	CHARGES	COSTS	AVG. COST	PERCENT SERVED	CHARGES	COSTS	AVG COST
MIS	18%	374	77,366	88.52	82%	4,099			100%	4,973		
FEL	12%	912	173,924	190.71	88%	6,963			100%	7,875		
APPEAL	7%	11	5,450	495.45	93%	147			100%	158		
TOTAL	14%	1,797	256,740	142.87	86%	11,209	863,860	77.07	100%	13,006	1,120,600	86.16

W/O PUB.DEF

	4,973	440,207	88.52
	7,875	1,501,811	190.71
	158	78,282	495.45
	13,006	2,020,300	155.34

SAVINGS(COST)

899,700

EST. JULY 1, 1988
COMPARISON REPORT
PULASKI, RADFORD, BLAND, WYTHE

1993-94

	SUPREME COURT				PUBLIC DEF.				PERCENT	TOTAL COSTS	AVG COST	
	PERCENT SERVED	CHARGES	COSTS	AVG. COST	PERCENT SERVED	CHARGES	COSTS	AVG. COST				
MIS	33%	746	51,940	69.62	67%	1,483			100%	2,229		
FEL	46%	494	74,985	151.79	54%	586			100%	1,080		
APPEAL	40%	2	8,908	4454.00	60%	3			100%	5		
TOTAL	37%	1,242	135,833	109.37	63%	2,072	315,815	152.42	100%	3,314	451,648	136.28

W/O PUB.DEF

2,229	155,193	69.62
1,080	163,935	151.79
5	22,270	4454.00
3,314	341,398	103.02

SAVINGS(COST)
(110,250)

1994-95

	SUPREME COURT				PUBLIC DEF.				PERCENT	TOTAL COSTS	AVG COST	
	PERCENT SERVED	CHARGES	COSTS	AVG. COST	PERCENT SERVED	CHARGES	COSTS	AVG. COST				
MIS	25%	530	46,074	86.93	75%	1,591			100%	2,121		
FEL	32%	516	77,244	149.70	68%	1,109			100%	1,625		
APPEAL	100%	6	1,318	219.67	0%				100%	6		
TOTAL	28%	1,052	124,636	118.48	72%	2,700	332,600	123.19	100%	3,752	457,236	121.86

W/O PUB.DEF

2,121	184,383	86.93
1,625	243,259	149.70
6	1,318	219.67
3,752	428,960	114.33

SAVINGS(COST)
(28,276)

1995-96

	SUPREME COURT				PUBLIC DEF.				PERCENT	TOTAL COSTS	AVG COST	
	PERCENT SERVED	CHARGES	COSTS	AVG. COST	PERCENT SERVED	CHARGES	COSTS	AVG. COST				
MIS	29%	620	60,962	98.33	71%	1,548			100%	2,168		
FEL	48%	588	90,113	153.25	52%	629			100%	1,217		
APPEAL	93%	13	2,105	161.92	7%	1			100%	14		
TOTAL	36%	1,221	153,180	125.45	64%	2,178	334,442	153.55	100%	3,399	487,622	143.46

W/O PUB.DEF

2,168	213,170	98.33
1,217	186,509	153.25
14	2,267	161.92
3,399	401,947	118.25

SAVINGS(COST)
(85,675)

**EST. JULY 1, 1986
COMPARISON REPORT
RICHMOND**

1993-94

	SUPREME COURT				PUBLIC DEF.				TOTAL			
	PERCENT SERVED	CHARGES	COSTS	AVG. COST	PERCENT SERVED	CHARGES	COSTS	AVG. COST	PERCENT SERVED	CHARGES	COSTS	AVG COST
MIS	37%	3,824	324,639	84.90	63%	6,474			100%	10,298		
FEL	31%	3,645	475,894	130.56	69%	8,060			100%	11,705		
APPEAL	32%	82	34,967	426.43	68%	177			100%	259		
TOTAL	34%	7,551	835,500	110.65	66%	14,711	1,312,368	89.21	100%	22,262	2,147,868	96.48
W/O PUB.DEF												
10,298 874,250 84.90												
11,705 1,528,214 130.56												
259 110,445 426.43												
22,262 2,512,908 112.88												
SAVINGS(COST)												
365,040												

1994-95

	SUPREME COURT				PUBLIC DEF.				TOTAL			
	PERCENT SERVED	CHARGES	COSTS	AVG. COST	PERCENT SERVED	CHARGES	COSTS	AVG. COST	PERCENT SERVED	CHARGES	COSTS	AVG COST
MIS	29%	4,225	377,334	89.31	71%	10,205			100%	14,430		
FEL	30%	3,268	472,271	144.51	70%	7,756			100%	11,024		
MIS	38%	93	39,397	423.62	62%	150			100%	243		
TOTAL	30%	7,586	889,002	117.19	70%	18,111	1,383,525	76.39	100%	25,697	2,272,527	88.44
W/O PUB.DEF												
14,430 1,288,741 89.31												
11,024 1,593,120 144.51												
243 102,941 423.62												
25,697 2,984,801 116.15												
SAVINGS(COST)												
712,274												

1995-96

	SUPREME COURT				PUBLIC DEF.				TOTAL			
	PERCENT SERVED	CHARGES	COSTS	AVG. COST	PERCENT SERVED	CHARGES	COSTS	AVG. COST	PERCENT SERVED	CHARGES	COSTS	AVG COST
MIS	32%	4,860	415,770	85.55	68%	10,150			100%	15,010		
FEL	23%	2,795	398,143	142.45	77%	9,347			100%	12,142		
APPEAL	40%	101	31,202	308.93	60%	150			100%	251		
TOTAL	28%	7,756	845,115	108.96	72%	19,647	1,566,893	79.75	100%	27,403	2,412,008	88.02
W/O PUB.DEF												
15,010 1,284,096 85.55												
12,142 1,729,607 142.45												
251 77,542 308.93												
27,403 3,091,245 112.81												
SAVINGS(COST)												
679,237												

EST. MARCH 1, 1976
COMPARISON REPORT
ROANOKE CITY

1993-94

SUPREME COURT				PUBLIC DEF.				TOTAL				
PERCENT SERVED	CHARGES	COSTS	AVG. COST	PERCENT SERVED	CHARGES	COSTS	AVG. COST	PERCENT SERVED	CHARGES	COSTS	AVG. COST	
MIS	26%	1,327	105,386	79.42	74%	3,700			100%	5,027		
FEL	31%	1,368	202,510	148.03	69%	3,001			100%	4,369		
APPEAL	32%	21	8,019	381.86	68%	45			100%	66		
TOTAL	29%	2,716	315,915	116.32	71%	6,746	639,588	94.81	100%	9,462	955,503	100.98
W/O PUB.DEF												
5,027 399,228 79.42												
4,369 646,759 148.03												
66 25,203 381.86												
9,462 1,071,189 113.21												
SAVINGS(COST)												
115,686												

1994-95

SUPREME COURT				PUBLIC DEF.				TOTAL				
PERCENT SERVED	CHARGES	COSTS	AVG. COST	PERCENT SERVED	CHARGES	COSTS	AVG. COST	PERCENT SERVED	CHARGES	COSTS	AVG. COST	
MIS	24%	1,101	80,793	73.38	76%	3,533			100%	4,634		
FEL	22%	1,035	151,734	146.60	78%	3,698			100%	4,733		
APPEAL	89%	32	11,857	370.53	11%	4			100%	36		
TOTAL	23%	2,168	244,384	112.72	77%	7,235	727,462	100.55	100%	9,403	971,846	103.35
W/O PUB.DEF												
4,634 340,050 73.38												
4,733 693,872 146.60												
36 13,339 370.53												
9,403 1,047,260 111.38												
SAVINGS(COST)												
75,414												

1995-96

SUPREME COURT				PUBLIC DEF.				TOTAL				
PERCENT SERVED	CHARGES	COSTS	AVG. COST	PERCENT SERVED	CHARGES	COSTS	AVG. COST	PERCENT SERVED	CHARGES	COSTS	AVG. COST	
MIS	20%	1,076	81,582	75.82	80%	4,358			100%	5,434		
FEL	25%	888	121,818	137.18	75%	2,617			100%	3,505		
APPEAL	63%	17	5,965	350.88	37%	10			100%	27		
TOTAL	22%	1,981	209,365	105.69	78%	6,985	751,771	107.63	100%	8,966	961,136	107.20
W/O PUB.DEF												
5,434 412,004 75.82												
3,505 480,824 137.18												
27 9,474 350.88												
8,966 902,303 100.64												
SAVINGS(COST)												
(58,833)												

COMPARISON REPORT
STAUNTON,WAYNESBORO,AUGUSTA - NOV. 1, 1972
ROCKBRIDGE,LEXINGTON,BUENA VISTA - JULY 1, 1990

1993-94

	SUPREME COURT				PUBLIC DEF.				TOTAL			
	PERCENT SERVED	CHARGES	COSTS	AVG.COST	PERCENT SERVED	CHARGES	COSTS	AVG.COST	PERCENT SERVED	CHARGES	COSTS	AVG COST
MIS	10%	619	41,391	66.87	90%	5,856			100%	6,475		
FEL	11%	307	28,154	91.71	89%	2,584			100%	2,891		
APPEAL	17%	10	6,893	689.30	83%	50			100%	60		
TOTAL	10%	936	76,438	81.66	90%	8,490	434,051	51.12	100%	9,426	510,489	54.16

W/O PUB.DEF			
		6,475	432,967
		2,891	265,124
		60	41,358
		9,426	739,450

SAVINGS(COST)
228,961

1994-95

	SUPREME COURT				PUBLIC DEF.				TOTAL			
	PERCENT SERVED	CHARGES	COSTS	AVG.COST	PERCENT SERVED	CHARGES	COSTS	AVG.COST	PERCENT SERVED	CHARGES	COSTS	AVG COST
MIS	23%	546	37,647	68.95	77%	1,823			100%	2,369		
FEL	9%	244	27,902	114.35	91%	2,586			100%	2,830		
APPEAL	15%	7	5,694	813.43	85%	41			100%	48		
IL	15%	797	71,243	89.39	85%	4,450	469,253	105.45	100%	5,247	540,496	103.01

W/O PUB.DEF			
		2,369	163,344
		2,830	323,617
		48	39,045
		5,247	526,006

SAVINGS(COST)
(14,490)

1995-96

	SUPREME COURT				PUBLIC DEF.				TOTAL			
	PERCENT SERVED	CHARGES	COSTS	AVG.COST	PERCENT SERVED	CHARGES	COSTS	AVG.COST	PERCENT SERVED	CHARGES	COSTS	AVG COST
MIS	29%	589	41,448	70.37	71%	1,447			100%	2,036		
FEL	9%	276	35,885	130.02	91%	2,759			100%	3,035		
APPEAL	12%	4	2,753	688.25	88%	29			100%	33		
TOTAL	17%	869	80,086	92.16	83%	4,235	467,607	110.41	100%	5,104	547,693	107.31

W/O PUB.DEF			
		2,036	143,274
		3,035	394,605
		33	22,712
		5,104	560,591

SAVINGS(COST)
12,898

EST. JULY 1, 1989
COMPARISON REPORT
SUFFOLK

1993-94

	SUPREME COURT				PUBLIC DEF.				PERCENT SERVED	CHARGES	TOTAL COSTS	AVG COST
	PERCENT SERVED	CHARGES	COSTS	AVG.COST	PERCENT SERVED	CHARGES	COSTS	AVG.COST				
MIS	21%	141	13,061	92.63	79%	524			100%	665		
FEL	14%	228	31,231	136.98	86%	1,378			100%	1,606		
APPEAL	20%	27	2,909	107.74	80%	109			100%	136		
TOTAL	16%	396	47,201	119.19	84%	2,011	282,669	140.56	100%	2,407	329,870	137.05

W/O PUB.DEF

665	61,600	92.63
1,606	219,987	136.98
136	14,653	107.74
2,407	296,239	123.07

SAVINGS(COST)
(33,631)

1994-95

	SUPREME COURT				PUBLIC DEF.				PERCENT SERVED	CHARGES	TOTAL COSTS	AVG COST
	PERCENT SERVED	CHARGES	COSTS	AVG.COST	PERCENT SERVED	CHARGES	COSTS	AVG.COST				
MIS	19%	152	11,755	77.34	81%	628			100%	780		
FEL	11%	235	40,836	173.77	89%	1,880			100%	2,115		
APPEAL	10%	4	4,321	1080.25	90%	36			100%	40		
TOTAL	13%	391	56,912	145.55	87%	2,544	286,083	112.45	100%	2,935	342,995	116.86

W/O PUB.DEF

780	60,322	77.34
2,115	367,524	173.77
40	43,210	1080.25
2,935	471,056	160.50

SAVINGS(COST)
128,061

1995-96

	SUPREME COURT				PUBLIC DEF.				PERCENT SERVED	CHARGES	TOTAL COSTS	AVG COST
	PERCENT SERVED	CHARGES	COSTS	AVG.COST	PERCENT SERVED	CHARGES	COSTS	AVG.COST				
MIS	12%	114	10,662	93.53	88%	858			100%	972		
FEL	17%	241	42,910	178.05	83%	1,215			100%	1,456		
APPEAL	14%	7	5,059	722.71	86%	43			100%	50		
TOTAL	15%	362	58,631	161.96	85%	2,116	376,540	177.95	100%	2,478	435,171	175.61

W/O PUB.DEF

972	90,908	93.53
1,456	259,240	178.05
50	36,136	722.71
2,478	386,284	155.89

SAVINGS(COST)
(18,887)

EST. JAN 1, 1973
COMPARISON REPORT
VIRGINIA BEACH

1993-94

	SUPREME COURT				PUBLIC DEF.				TOTAL			
	PERCENT SERVED	CHARGES	COSTS	AVG.COST	PERCENT SERVED	CHARGES	COSTS	AVG.COST	PERCENT SERVED	CHARGES	COSTS	AVG COST
MIS	22%	1,241	82,294	66.31	78%	4,507			100%	5,748		
FEL	13%	734	128,073	174.49	87%	5,043			100%	5,777		
APPEAL	6%	20	12,263	613.15	94%	297			100%	317		
TOTAL	17%	1,995	222,630	111.59	83%	9,847	898,279	91.22	100%	11,842	1,120,909	94.66
W/O PUB.DEF												
										5,748	381,165	66.31
										5,777	1,008,008	174.49
										317	194,369	613.15
										11,842	1,583,541	133.72
SAVINGS(COST)												
462,632												

1994-95

	SUPREME COURT				PUBLIC DEF.				TOTAL			
	PERCENT SERVED	CHARGES	COSTS	AVG.COST	PERCENT SERVED	CHARGES	COSTS	AVG.COST	PERCENT SERVED	CHARGES	COSTS	AVG COST
MIS	21%	1,492	94,991	63.67	79%	5,509			100%	7,001		
FEL	14%	1,022	180,148	176.27	86%	6,075			100%	7,097		
APPEAL	26%	29	29,514	1017.72	74%	84			100%	113		
TOTAL	18%	2,543	304,653	119.80	82%	11,668	912,677	78.22	100%	14,211	1,217,330	85.66
W/O PUB.DEF												
										7,001	445,732	63.67
										7,097	1,250,989	176.27
										113	115,003	1017.72
										14,211	1,811,723	127.49
SAVINGS(COST)												
594,393												

1995-96

	SUPREME COURT				PUBLIC DEF.				TOTAL			
	PERCENT SERVED	CHARGES	COSTS	AVG.COST	PERCENT SERVED	CHARGES	COSTS	AVG.COST	PERCENT SERVED	CHARGES	COSTS	AVG COST
MIS	14%	1,086	88,531	81.52	86%	6,732			100%	7,818		
FEL	13%	951	171,820	180.67	87%	6,130			100%	7,081		
APPEAL	42%	106	22,032	207.85	58%	148			100%	254		
TOTAL	14%	2,143	282,383	131.77	86%	13,010	1,143,639	87.90	100%	15,153	1,426,022	94.11
W/O PUB.DEF												
										7,818	637,325	81.52
										7,081	1,279,345	180.67
										254	52,794	207.85
										15,153	1,969,464	129.97
SAVINGS(COST)												
543,442												

COMPARISON REPORT
WINCHESTER, FREDERICK, CLARKE- EST. JULY 1, 1987
PAGE, SHENANDOAH, WARREN - EST. JULY 1, 1988

1993-94

	SUPREME COURT				PUBLIC DEF.				TOTAL			
	PERCENT SERVED	CHARGES	COSTS	AVG. COST	PERCENT SERVED	CHARGES	COSTS	AVG. COST	PERCENT SERVED	CHARGES	COSTS	AVG COST
MIS	21%	458	32,264	70.45	79%	1,758			100%	2,216		
FEL	24%	532	66,176	124.39	76%	1,672			100%	2,204		
APPEAL	32%	9	6,500	722.22	68%	19			100%	28		
TOTAL	22%	999	104,940	105.05	78%	3,449	381,915	110.73	100%	4,448	486,855	109.45

W/O PUB.DEF

2,216	156,107	70.45
2,204	274,158	124.39
28	20,222	722.22
4,448	450,487	101.28

SAVINGS(COST)
(36,368)

1994-95

	SUPREME COURT				PUBLIC DEF.				TOTAL			
	PERCENT SERVED	CHARGES	COSTS	AVG. COST	PERCENT SERVED	CHARGES	COSTS	AVG. COST	PERCENT SERVED	CHARGES	COSTS	AVG COST
MIS	20%	485	28,999	59.79	80%	1,911			100%	2,396		
FEL	15%	390	52,522	134.67	85%	2,183			100%	2,573		
APPEAL	100%	7	6,081	868.71	0%				100%	7		
TOTAL	18%	882	87,602	99.32	82%	4,094	381,514	93.19	100%	4,976	469,116	94.28

W/O PUB.DEF

2,396	143,261	59.79
2,573	346,511	134.67
7	6,081	868.71
4,976	495,853	99.65

SAVINGS(COST)
26,737

1995-96

	SUPREME COURT				PUBLIC DEF.				TOTAL			
	PERCENT SERVED	CHARGES	COSTS	AVG. COST	PERCENT SERVED	CHARGES	COSTS	AVG. COST	PERCENT SERVED	CHARGES	COSTS	AVG COST
MIS	14%	393	27,851	70.87	86%	2,513			100%	2,906		
FEL	18%	375	62,466	166.58	82%	1,730			100%	2,105		
APPEAL	69%	20	3,457	172.85	31%	9			100%	29		
TOTAL	16%	788	93,774	119.00	84%	4,252	393,558	92.56	100%	5,040	487,332	96.69

W/O PUB.DEF

2,906	205,941	70.87
2,105	350,642	166.58
29	5,013	172.
5,040	561,597	111.4.

SAVINGS(COST)
74,265

Appendix E

EXPENDITURE STATEMENT
FOR
PUBLIC DEFENDER OFFICES
FY96

ALEXANDRIA
EXPENDITURE STATEMENT
For Fiscal Year Ending June 30, 1996

Expenditures

Salaries	625,166
Retirement	150,784
Annual Leave	235
TOTAL PERSONNEL	776,185
Express Services (overnight, nxt day del)	7,853
Printing (Copying)	2,924
Telecommunications Services - DIT	243
Organization Memberships (Dues)	5,849
Publication Subscriptions	5,799
Convention & Education	8,394
Electrical Repair (Labor)	2,939
Computer Hardware Maintenance	179
TOTAL CONTRACTUAL SERVICES	34,180
Office Supplies	4,723
Gasoline	228
TOTAL SUPPLIES	4,951
Property Ins	1,198
Surety Bonds	105
TOTAL CONTINUOUS CHARGES	1,303
Computer Equipment	3,173
Reference Material (Books)	2,258
Electronic Equipment	7,445
Office Furniture	1,257
TOTAL EQUIPMENT	14,133
TOTAL EXPENDITURES	830,752

BEDFORD
EXPENDITURE STATEMENT
For Fiscal Year Ending June 30, 1996

	Expenditures
Salaries	148,580
Retirement	35,370
TOTAL PERSONNEL	<u>183,950</u>
Express Services (overnight, nxt day del)	281
Printing (Copying)	427
Telecommunications Services - DIT	1,734
Organization Memberships (Dues)	588
Publication Subscriptions	4,977
Convention & Education	4,418
Electrical Repair (Labor)	387
Computer Hardware Maintenance	389
TOTAL CONTRACTUAL SERVICES	<u>13,201</u>
Office Supplies	650
Gasoline	24
TOTAL SUPPLIES	<u>674</u>
Premiums	27
TOTAL TRANSFER PAYMENTS	<u>27</u>
Property Ins	287
Plant Rental	11,600
Surety Bonds	23
TOTAL CONTINUOUS CHARGES	<u>11,910</u>
Computer Equipment	3,664
Reference Material (Books)	397
Electronic Equipment	54
TOTAL EQUIPMENT	<u>4,115</u>
TOTAL EXPENDITURES	213,878

DANVILLE
EXPENDITURE STATEMENT
For Fiscal Year Ending June 30, 1996

Expenditures

Salaries	195,450
Retirement	44,686
TOTAL PERSONNEL	240,136
Express Services (overnight, nxt day del)	1,340
Printing (Copying)	204
Telecommunications Services - DIT	3,887
Organization Memberships (Dues)	1,487
Publication Subscriptions	3,867
Convention & Education	5,431
Legal Services (Non-Attorney)	90
Electrical Repair (Labor)	1,454
Computer Hardware Maintenance	642
TOTAL CONTRACTUAL SERVICES	18,403
Office Supplies	927
TOTAL SUPPLIES	927
Property Ins	408
Plant Rental	9,747
Surety Bonds	37
TOTAL CONTINUOUS CHARGES	10,192
Computer Equipment	8,917
Reference Material (Books)	651
Electronic Equipment	1,637
Office Furniture	2,764
TOTAL EQUIPMENT	13,969
TOTAL EXPENDITURES	283,627

FAIRFAX
EXPENDITURE STATEMENT
For Fiscal Year Ending June 30, 1996

	Expenditures
Salaries	913,656
Retirement	210,186
Annual Leave	6,312
TOTAL PERSONNEL	1,130,154
Express Services (overnight, nxt day del)	5,905
Printing (Copying)	3,416
Telecommunications Services - DIT	13,516
Organization Memberships (Dues)	6,016
Publication Subscriptions	9,010
Convention & Education	7,327
Attorney Services (Office Expence Allow)	1,875
Legal Services (Non-Attorney)	457
Electrical Repair (Labor)	3,656
Computer Hardware Maintenance	5,928
TOTAL CONTRACTUAL SERVICES	57,106
Office Supplies	5,167
Gasoline	336
Custodial Supplies (Janitorial)	11
TOTAL SUPPLIES	5,515
Property Ins	1,780
Plant Rental	114,643
Surety Bonds	150
TOTAL CONTINUOUS CHARGES	116,573
Computer Equipment	28,892
Reference Material (Books)	872
Electronic Equipment	26,215
Office Furniture	4,016
TOTAL EQUIPMENT	59,995
TOTAL EXPENDITURES	1,369,343

FRANKLIN
EXPENDITURE STATEMENT
For Fiscal Year Ending June 30, 1996

Expenditures

Salaries	195,030
Retirement	43,970
Annual Leave	3,989
TOTAL PERSONNEL	242,989
Express Services (overnight, nzt day del)	1,453
Printing (Copying)	2,788
Telecommunications Services - DIT	3,659
Organization Memberships (Dues)	782
Publication Subscriptions	2,658
Convention & Education	4,619
Attorney Services (Office Expence Allow)	2,292
Electrical Repair (Labor)	560
Computer Hardware Maintenance	149
TOTAL CONTRACTUAL SERVICES	18,959
Office Supplies	1,348
Gasoline	3
TOTAL SUPPLIES	1,352
Property Ins	378
Plant Rental	12,851
Surety Bonds	34
TOTAL CONTINUOUS CHARGES	13,263
Computer Equipment	4,869
Reference Material (Books)	247
Electronic Equipment	529
Office Furniture	250
TOTAL EQUIPMENT	5,895
TOTAL EXPENDITURES	282,457

FRÉDERICKSBURG
EXPENDITURE STATEMENT
For Fiscal Year Ending June 30, 1996

	Expenditures
Salaries	428,713
Retirement	104,740
Annual Leave	7,351
TOTAL PERSONNEL	540,804
Express Services (overnight, nxt day del)	2,845
Printing (Copying)	1,124
Telecommunications Services - DIT	8,911
Organization Memberships (Dues)	2,440
Publication Subscriptions	4,742
Convention & Education	17,963
Electrical Repair (Labor)	2,073
Computer Hardware Maintenance	1,865
TOTAL CONTRACTUAL SERVICES	41,963
Office Supplies	3,182
Gasoline	103
Custodial Supplies (Janitorial)	1
TOTAL SUPPLIES	3,286
Property Ins	934
Plant Rental	50,250
Surety Bonds	88
TOTAL CONTINUOUS CHARGES	51,272
Computer Equipment	11,798
Reference Material (Books)	1,255
Electronic Equipment	9,267
Office Furniture	5,104
TOTAL EQUIPMENT	27,425
TOTAL EXPENDITURES	664,750

HALIFAX
EXPENDITURE STATEMENT
For Fiscal Year Ending June 30, 1996

	<i>Expenditures</i>
Salaries	224,468
Retirement	55,340
Annual Leave	664
TOTAL PERSONNEL	<u>280,472</u>
Express Services (overnight, nxt day del)	2,396
Printing (Copying)	321
Telecommunications Services - DIT	7,348
Organization Memberships (Dues)	728
Publication Subscriptions	4,174
Convention & Education	14,104
Attorney Services (Office Expence Allow)	208
Electrical Repair (Labor)	1,507
Computer Hardware Maintenance	632
TOTAL CONTRACTUAL SERVICES	<u>31,417</u>
Office Supplies	1,462
Gasoline	60
TOTAL SUPPLIES	<u>1,522</u>
Property Ins	468
Plant Rental	10,990
Surety Bonds	42
TOTAL CONTINUOUS CHARGES	<u>11,500</u>
Computer Equipment	4,411
Reference Material (Books)	539
Electronic Equipment	703
Office Furniture	2,976
TOTAL EQUIPMENT	<u>8,629</u>
TOTAL EXPENDITURES	333,540

LEESBURG
EXPENDITURE STATEMENT
For Fiscal Year Ending June 30, 1996

	Expenditures
Salaries	240,533
Retirement	55,130
Annual Leave	13,616
TOTAL PERSONNEL	<u>309,279</u>
Express Services (overnight, nxt day del)	1,892
Printing (Copying)	3,621
Telecommunications Services - DIT	4,292
Organization Memberships (Dues)	1,355
Publication Subscriptions	3,984
Convention & Education	2,277
Attorney Services (Office Expencc Allow)	5,000
Electrical Repair (Labor)	3,788
Computer Hardware Maintenance	3,557
TOTAL CONTRACTUAL SERVICES	<u>29,766</u>
Office Supplies	2,634
Gasoline	206
Building Repair & Maintenance Materials	530
Custodial Supplies (Janitorial)	102
TOTAL SUPPLIES	<u>3,472</u>
Premiums	7
TOTAL TRANSFER PAYMENTS	<u>7</u>
Property Ins	521
Plant Rental	26,504
Electricity	4,061
Surety Bonds	45
TOTAL CONTINUOUS CHARGES	<u>31,131</u>
Computer Equipment	12,891
Reference Material (Books)	442
Electronic Equipment	3,599
Office Furniture	4,097
TOTAL EQUIPMENT	<u>21,029</u>
TOTAL EXPENDITURES	394,685

WARRENTON
EXPENDITURE STATEMENT
For Fiscal Year Ending June 30, 1996

Expenditures

Salaries	92,699
Retirement	18,995
Annual Leave	5,531
TOTAL PERSONNEL	117,225
Express Services (overnight, nxt day del)	922
Printing (Copying)	95
Telecommunications Services - DIT	2,827
Organization Memberships (Dues)	563
Publication Subscriptions	2,728
Convention & Education	150
Attorney Services (Office Expence Allow)	4,683
Electrical Repair (Labor)	419
Computer Hardware Maintenance	480
TOTAL CONTRACTUAL SERVICES	12,866
Office Supplies	457
TOTAL SUPPLIES	457
Premiums	4
TOTAL TRANSFER PAYMENTS	4
Property Ins	178
Plant Rental	7,930
Surety Bonds	17
TOTAL CONTINUOUS CHARGES	8,125
Computer Equipment	3,699
Electronic Equipment	1,897
Office Furniture	1,321
TOTAL EQUIPMENT	6,917
TOTAL EXPENDITURES	145,593

LYNCHBURG
EXPENDITURE STATEMENT
For Fiscal Year Ending June 30, 1996

Expenditures

Salaries	352,871
Retirement	79,727
Annual Leave	6,520
TOTAL PERSONNEL	439,117
Express Services (overnight, nxt day del)	2,882
Printing (Copying)	486
Telecommunications Services - DIT	3,824
Organization Memberships (Dues)	1,754
Publication Subscriptions	4,454
Convention & Education	10,652
Attorney Services (Office Expencc Allow)	5,000
Electrical Repair (Labor)	1,834
Computer Hardware Maintenance	5,062
TOTAL CONTRACTUAL SERVICES	35,949
Office Supplies	1,836
Gasoline	328
TOTAL SUPPLIES	2,164
Premiums	8
TOTAL TRANSFER PAYMENTS	8
Property Ins	720
Plant Rental	26,944
Surety Bonds	65
TOTAL CONTINUOUS CHARGES	27,729
Computer Equipment	19,119
Reference Material (Books)	552
Electronic Equipment	2,059
Office Furniture	8,394
TOTAL EQUIPMENT	30,123
TOTAL EXPENDITURES	535,090

MARTINSVILLE
EXPENDITURE STATEMENT
For Fiscal Year Ending June 30, 1996

	Expenditures
Salaries	249,144
Retirement	54,967
TOTAL PERSONNEL	<u>304,111</u>
Express Services (overnight, nzt day del)	1,712
Printing (Copying)	101
Telecommunications Services - DIT	4,468
Organization Memberships (Dues)	1,656
Publication Subscriptions	3,746
Convention & Education	5,489
Attorney Services (Office Expencc Allow)	2,386
Electrical Repair (Labor)	1,012
Computer Hardware Maintenance	5,577
TOTAL CONTRACTUAL SERVICES	<u>26,149</u>
Office Supplies	1,718
Gasoline	119
TOTAL SUPPLIES	<u>1,837</u>
Property Ins	485
Plant Rental	14,480
Surety Bonds	45
TOTAL CONTINUOUS CHARGES	<u>15,010</u>
Computer Equipment	9,060
Reference Material (Books)	213
Electronic Equipment	5,638
Office Furniture	770
TOTAL EQUIPMENT	<u>15,680</u>
TOTAL EXPENDITURES	362,788

PETERSBURG
EXPENDITURE STATEMENT
for Fiscal Year Ending June 30, 1996

	Expenditures
Salaries	301,422
Retirement	70,383
Annual Leave	1,610
TOTAL PERSONNEL	<u>373,415</u>
Express Services (overnight, nxt day del)	2,624
Printing (Copying)	604
Telecommunications Services - DIT	4,034
Organization Memberships (Dues)	736
Publication Subscriptions	5,682
Convention & Education	6,260
Attorney Services (Office Expence Allow)	2,500
Electrical Repair (Labor)	1,408
Computer Hardware Maintenance	209
TOTAL CONTRACTUAL SERVICES	<u>24,056</u>
Office Supplies	2,137
Gasoline	66
TOTAL SUPPLIES	<u>2,203</u>
Unemployment Compensation	4,992
TOTAL TRANSFER PAYMENTS	<u>4,992</u>
Property Ins	597
Equipment Rental	50
Plant Rental	24,181
Surety Bonds	54
TOTAL CONTINUOUS CHARGES	<u>24,882</u>
Computer Equipment	4,681
Reference Material (Books)	843
Electronic Equipment	275
Office Furniture	3,581
TOTAL EQUIPMENT	<u>9,381</u>
TOTAL EXPENDITURES	438,929

PORTSMOUTH
EXPENDITURE STATEMENT
For Fiscal Year Ending June 30, 1996

Expenditures

Salaries	576,668
Retirement	135,681
Annual Leave	6,840
TOTAL PERSONNEL	719,190
Express Services (overnight, nxt day del)	9,846
Printing (Copying)	382
Telecommunications Services - DIT	6,980
Organization Memberships (Dues)	3,087
Publication Subscriptions	3,628
Convention & Education	10,876
Attorney Services (Office Expencc Allow)	2,083
Electrical Repair (Labor)	1,146
Computer Hardware Maintenance	3,029
TOTAL CONTRACTUAL SERVICES	41,058
Office Supplies	5,451
Gasoline	31
TOTAL SUPPLIES	5,482
Premiums	4
TOTAL TRANSFER PAYMENTS	4
Property Ins	1,160
Plant Rental	54,743
Surety Bonds	107
TOTAL CONTINUOUS CHARGES	56,010
Computer Equipment	17,233
Reference Material (Books)	1,259
Electronic Equipment	18,337
Office Furniture	5,289
TOTAL EQUIPMENT	42,118
TOTAL EXPENDITURES	863,860

PULASKI
EXPENDITURE STATEMENT
For Fiscal Year Ending June 30, 1996

Expenditures

Salaries	247,284
Retirement	61,011
TOTAL PERSONNEL	308,295
Express Services (overnight, nxt day del)	1,984
Printing (Copying)	6
Telecommunications Services - DIT	2,979
Organization Memberships (Dues)	1,456
Publication Subscriptions	1,854
Convention & Education	9,610
Electrical Repair (Labor)	1,030
Computer Hardware Maintenance	823
TOTAL CONTRACTUAL SERVICES	19,741
Office Supplies	1,671
Gasoline	269
Custodial Supplies (Janitorial)	249
TOTAL SUPPLIES	2,189
Property Ins	466
Plant Rental	12,000
Surety Bonds	42
TOTAL CONTINUOUS CHARGES	12,508
Computer Equipment	5,842
Reference Material (Books)	212
Electronic Equipment	655
TOTAL EQUIPMENT	6,709
TOTAL EXPENDITURES	349,443

RICHMOND
EXPENDITURE STATEMENT
For Fiscal Year Ending June 30, 1996

Expenditures

Salaries	1,128,652
Retirement	268,454
Annual Leave	8,067
TOTAL PERSONNEL	1,405,172
Express Services (overnight, nxt day del)	2,488
Printing (Copying)	1,181
Telecommunications Services - DIT	14,495
Organization Memberships (Dues)	5,012
Publication Subscriptions	5,301
Convention & Education	21,042
Legal Services (Non-Attorney)	244
Electrical Repair (Labor)	4,778
Computer Hardware Maintenance	1,276
TOTAL CONTRACTUAL SERVICES	55,817
Office Supplies	7,053
Gasoline	228
TOTAL SUPPLIES	7,281
Premiums	25
TOTAL TRANSFER PAYMENTS	25
Property Ins	2,071
Plant Rental	95,071
Surety Bonds	187
TOTAL CONTINUOUS CHARGES	97,329
Computer Equipment	21,722
Reference Material (Books)	1,498
Electronic Equipment	3,562
Office Furniture	4,488
TOTAL EQUIPMENT	31,269
TOTAL EXPENDITURES	1,596,895

ROANOKE
EXPENDITURE STATEMENT
For Fiscal Year Ending June 30, 1996

Expenditures

Salaries	516,645
Retirement	125,923
Annual Leave	2,237
TOTAL PERSONNEL	644,804
Express Services (overnight, nxt day del)	2,797
Printing (Copying)	353
Telecommunications Services - DIT	4,555
Organization Memberships (Dues)	2,379
Publication Subscriptions	6,984
Convention & Education	12,845
Electrical Repair (Labor)	3,356
Computer Hardware Maintenance	4,177
TOTAL CONTRACTUAL SERVICES	37,445
Office Supplies	2,515
Gasoline	208
Custodial Supplies (Janitorial)	4
TOTAL SUPPLIES	2,727
Premiums	20
TOTAL TRANSFER PAYMENTS	20
Property Ins	1,045
Plant Rental	51,920
Surety Bonds	93
TOTAL CONTINUOUS CHARGES	53,058
Computer Equipment	11,486
Reference Material (Books)	956
Electronic Equipment	512
Office Furniture	15,762
TOTAL EQUIPMENT	28,717
TOTAL EXPENDITURES	766,771

STAUNTON
EXPENDITURE STATEMENT
For Fiscal Year Ending June 30, 1996

Expenditures

Salaries	357,745
Fringe Benefits	78,410
Leave Payments	353
TOTAL PERSONNEL	436,508
Freight & Postage	2,976
Other Services (printing, film dev, ads, janitorial, non-attorney legal)	1,320
Telecommunications Services	2,393
Organization Memberships (Dues)	736
Publication Subscriptions	4,650
Convention & Education & Other Travel	7,741
Office Expencc Allowance	12,472
Repair & Maintenance	547
Computer Installation & Repair	270
TOTAL CONTRACTUAL SERVICES	33,104
Office Supplies	1,326
Photo ,Computer & Other Supplies	110
Custodial Supplies (Janitorial)	141
TOTAL SUPPLIES	1,577
Miscellaneous Transfer Payments	7
TOTAL TRANSFER PAYMENTS	7
Insurance (Property, Liability, Wkers Comp)	692
Office Rent	19,583
Surety Bonds	59
TOTAL CONTINUOUS CHARGES	20,334
Computer Equipment	3,618
Reference Material (Books)	116
Miscellaneous Office Equipment & Machines	1,853
Office Furniture	490
TOTAL EQUIPMENT	6,077
TOTAL EXPENDITURES	497,607

SUFFOLK
EXPENDITURE STATEMENT
For Fiscal Year Ending June 30, 1996

	Expenditures
Salaries	296,888
Retirement	72,320
TOTAL PERSONNEL	369,208
Express Services (overnight, nxt day del)	1,915
Printing (Copying)	428
Telecommunications Services - DIT	3,546
Organization Memberships (Dues)	1,554
Publication Subscriptions	4,551
Convention & Education	3,715
Electrical Repair (Labor)	710
Computer Hardware Maintenance	89
TOTAL CONTRACTUAL SERVICES	16,508
Office Supplies	1,876
Gasoline	15
TOTAL SUPPLIES	1,891
Property Ins	673
Plant Rental	33,612
Surety Bonds	62
TOTAL CONTINUOUS CHARGES	34,347
Computer Equipment	9,604
Reference Material (Books)	431
Electronic Equipment	794
Office Furniture	3,759
TOTAL EQUIPMENT	14,588
TOTAL EXPENDITURES	436,542

VA BEACH
EXPENDITURE STATEMENT
For Fiscal Year Ending June 30, 1996

Expenditures

Salaries	779,341
Retirement	175,293
Annual Leave	12,656
TOTAL PERSONNEL	967,290
Express Services (overnight, nxt day del)	12,908
Printing (Copying)	472
Telecommunications Services - DIT	12,027
Organization Memberships (Dues)	2,710
Publication Subscriptions	5,979
Convention & Education	5,430
Attorney Services (Office Expence Allow)	15,000
Electrical Repair (Labor)	3,423
Computer Hardware Maintenance	1,610
TOTAL CONTRACTUAL SERVICES	59,558
Office Supplies	4,008
Gasoline	34
TOTAL SUPPLIES	4,042
Premiums	11
TOTAL TRANSFER PAYMENTS	11
Property Ins	1,564
Plant Rental	81,727
Surety Bonds	141
TOTAL CONTINUOUS CHARGES	83,432
Computer Equipment	26,903
Reference Material (Books)	1,609
Electronic Equipment	6,905
Office Furniture	8,889
TOTAL EQUIPMENT	44,306
TOTAL EXPENDITURES	1,158,637

JUVENILE PRE-DETENTION/DETENTION SPECIALIST - VA BEACH
EXPENDITURE STATEMENT
or Fiscal Year Ending June 30, 1996

Expenditures

Salaries	28,445
Retirement	7,414
TOTAL PERSONNEL	35,859
Express Services (overnight, nxt day del)	26
Telecommunications Services - DIT	456
Convention & Education	352
TOTAL CONTRACTUAL SERVICES	834
Office Supplies	153
TOTAL SUPPLIES	153
Reference Material (Books)	10
Electronic Equipment	13
TOTAL EQUIPMENT	23
TOTAL EXPENDITURES	36,869

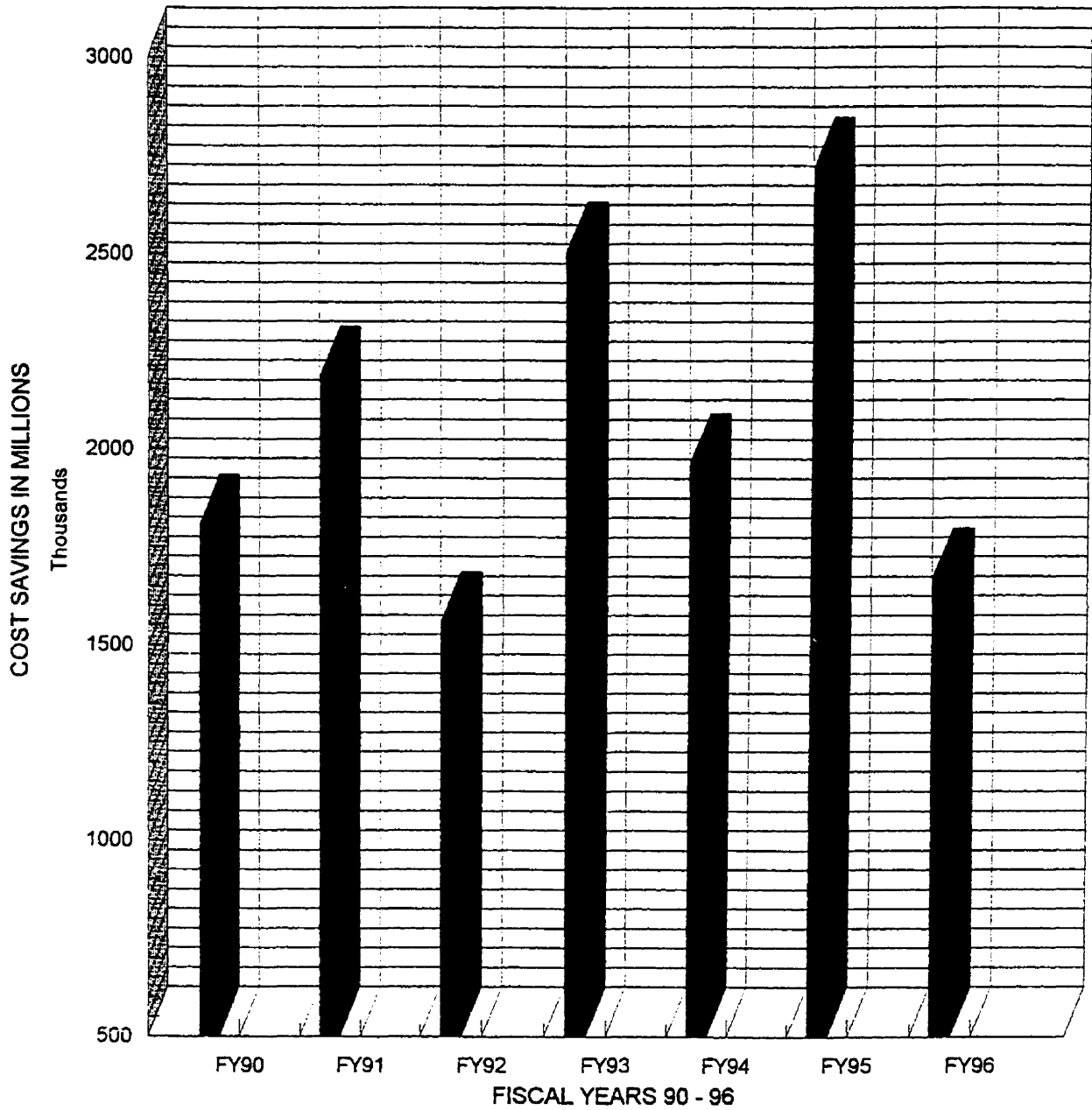
WINCHESTER
EXPENDITURE STATEMENT
For Fiscal Year Ending June 30, 1996

Expenditures

Salaries	311,332
Retirement	51,942
Annual Leave	1,516
TOTAL PERSONNEL	364,790
Express Services (overnight, nxt day del)	746
Printing (Copying)	1,218
Telecommunications Services - DIT	1,315
Organization Memberships (Dues)	1,257
Publication Subscriptions	3,732
Convention & Education	3,693
Attorney Services (Office Expence Allow)	32,709
Electrical Repair (Labor)	422
Computer Hardware Maintenance	89
TOTAL CONTRACTUAL SERVICES	45,181
Office Supplies	462
Gasoline	23
Custodial Supplies (Janitorial)	67
TOTAL SUPPLIES	553
Property Ins	618
Plant Rental	8,525
Surety Bonds	56
TOTAL CONTINUOUS CHARGES	9,199
Computer Equipment	2,348
Reference Material (Books)	215
Electronic Equipment	182
Office Furniture	1,091
TOTAL EQUIPMENT	3,835
TOTAL EXPENDITURES	423,558

Appendix F

Public Defender Cost Savings to the Commonwealth



FY90	=	\$1,807,760		FY94	=	\$1,966,247
FY91	=	\$2,187,236		FY95	=	\$2,722,261
FY92	=	\$1,560,423		FY96	=	\$1,672,564
FY93	=	\$2,508,165				

TOTAL SAVINGS \$14,424,656

Appendix G

Study Methodology for statistical samples in HJR 79

James C. Creech, Ph.D.

Virginia Criminal Sentencing Commission

Due to nature of the two databases, matching would prove to be very difficult. The primary problem was that there was no clean identifier to use for matching. Consequently, I chose to take a sample from the Supreme Court's court-appointed attorney payment (SC) data and then match to the State Bar Association's (SBA) data on the basis of name, using address information as a double-check. When the dependent variable's distribution is unknown, a conservative sample size is 400. A sample size of 400 is desirable because with repeated samples of 400, the observed mean will be within $\pm 5\%$ of the true mean 95% of the time. A sample size of 400 is conservative because if the true distribution of the dependent variable is skewed, a sample of less than 400 is needed to have the same degree of confidence that the sample mean will be within $\pm 5\%$ of the true mean. Each entry of SC data was assigned a random number. The data were then ordered by the random number. An eyeball estimate of individual attorneys to law firms (and the like) suggested a 2:1 ratio; to err conservatively, a sample of 700 SC entries was selected to be matched to the SBA data initially. Errors were detected in the first data provided by the SC, when the corrected data was provided, several cases had reported disbursements of zero in both years. To correct for this loss of sample, the next 100 cases were added to the sample.

Using the sample selection method described above, 787 cases from the SC data base were either matched to the SBA data base or assigned to a category other than individual attorney. The situation for the remaining 13 cases was that the person/law firm had been entered twice into the SC database and both had been selected for the sample; the double entries were combined into one. To summarize the 787 cases that were examined:

- ◆ 495 (62.9%) were attorneys who could be found in the SBA database;
- ◆ 154 (19.6%) were law firms, law partnerships, or attorneys who employ associates;
- ◆ 70 (8.9%) were individuals who could not be found in the SBA database (including several who may not be attorneys);
- ◆ 7 (.9%) were other institutions (including hospitals, mental health institutions, and courts); and
- ◆ 61 (7.8%) who were selected but received no disbursement in either year.

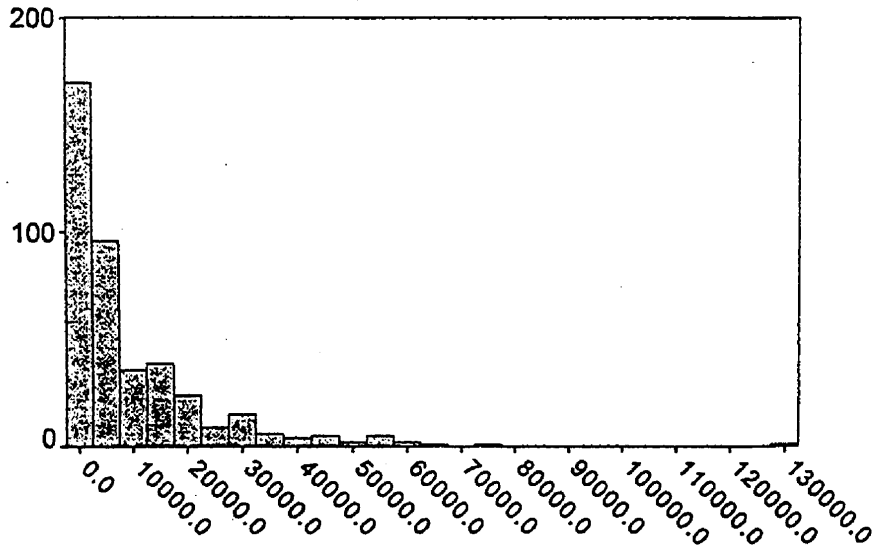
**Total payment and years of experience for court-appointed attorneys in
FY95 and FY96**

	FY95		FY96	
	Payment	Experience ¹	Payment	Experience ¹
Mean	\$9,669.57	13.9	\$9,668.81	12.1
Median	3,708.08	11.8	4,365.00	12.1
Mode	100.00	3.8	100.00	6.7
Minimum	25.00	.3	55.00	.7
Maximum	127,501.00	46.4	65,682.00	54.0
Number of cases	416	416	416	416

¹ Experience is measured by the number of years (including fractions) from the date the attorney passed the bar examination through June 30 of the appropriate fiscal year.

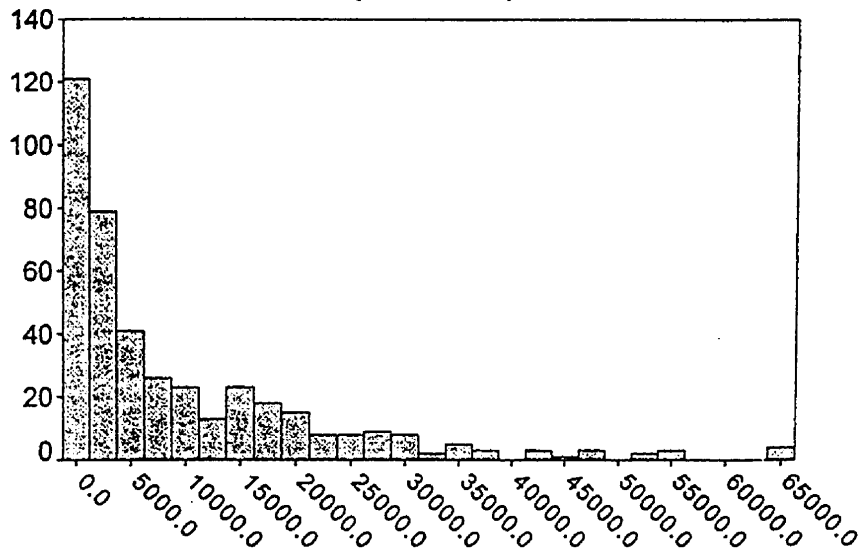
Amount paid court-appointed attorneys in FY95

(N = 416)



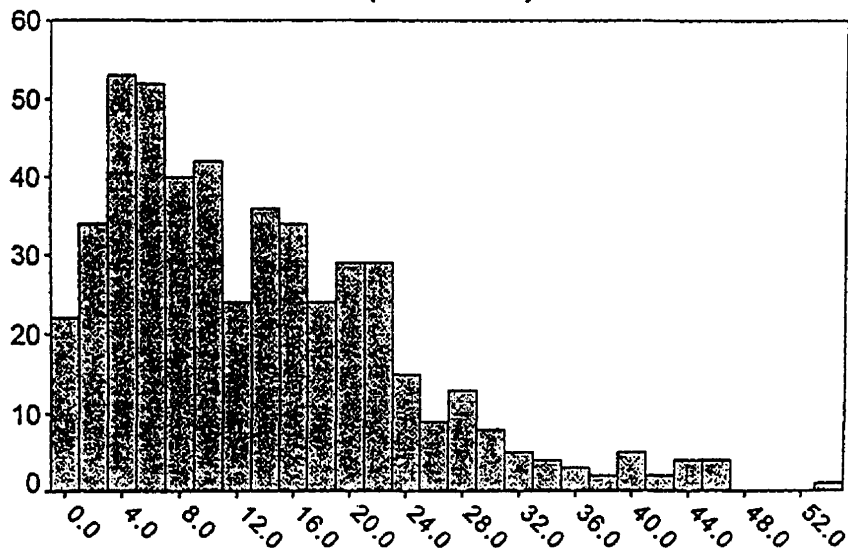
Amount paid court-appointed attorneys in FY96

(N = 416)



Years experience of court-appointed attorneys in FY95

(N = 416)



Years experience of court-appointed attorneys in FY96

(N = 416)

