



COMMONWEALTH of VIRGINIA

DEPARTMENT OF EDUCATION

P.O. Box 2120

Richmond, Virginia 23218-2120

JO LYNNE DEMARY, Ed.D.
Superintendent of Public Instruction

October 14, 2005

Office: (804) 225-2023
Fax: (804) 371-2099

The Honorable Mark R. Warner
Governor of Virginia
Patrick Henry Building, 3rd Floor
1111 East Broad Street
Richmond, Virginia 23219

Members of the General Assembly of Virginia
General Assembly Building
Richmond, Virginia 23219

Dear Governor Warner and Members of the General Assembly:

I am pleased to transmit the attached document, *Report of Individual Student Alternative Education Plan Program*, which was authorized by Item 144 G of the appropriation act, Chapter 951, 2005 Acts of Assembly. This item requires the Department of Education to monitor the implementation of this program and to provide a report to the Governor and the General Assembly and to the Senate Finance, Senate Education and Health, House Appropriations, and House Education Committees.

If you have questions or require additional information relative to this transmittal, please do not hesitate to contact me at 804-225-2023.

Sincerely,


Jo Lynne DeMary

JLD/EH/gjm
Attachment



**VIRGINIA DEPARTMENT
OF EDUCATION**

ANNUAL REPORT

INDIVIDUAL STUDENT ALTERNATIVE EDUCATION PLAN PROGRAM

**PROGRAM TO PREPARE SECONDARY STUDENTS TO TAKE TESTS OF
GENERAL EDUCATIONAL DEVELOPMENT (GED) AS APPROVED BY
GED TESTING SERVICE – GED OPTION PROGRAM**

OCTOBER 2005

**DIVISION OF INSTRUCTION
OFFICE OF ADULT EDUCATION AND LITERACY**

Individual Student Alternative Education Program

Executive Summary

The Individual Student Alternative Education Plan (ISAEP) program prepares certain secondary students to take the Tests of General Educational Development (GED) while developing career and technical education skills. Section 22.1-254 of the Code of Virginia authorizes local school boards to fulfill compulsory attendance requirements for individuals who are at least 16 years of age and enrolled in an ISAEP program that includes career guidance counseling, GED preparation, counseling on the economic impact of not completing high school, and procedures for reenrollment.

During 2004-05 school year:

- The Department of Education allocated \$2,247,581 in grants to support ISAEP programs in school divisions. The grants ranged from \$7,859 to \$102,162.
- Technical assistance activities focused on increasing the use of technology to support assessment and instructional activities and effective counseling and transitional strategies for ISAEP students.
- School divisions reported that 5,950 students between the ages of 16 and 18 years of age qualified for an ISAEP and received ISAEP services. This was an increase in student enrollment of 17 percent from 2003-2004. The percentage of 16-year-old students with an ISAEP substantially increased from 26 percent to 34 percent; 17-year-old enrollment decreased from 56 percent to 48 percent; and 18-year-old student enrollment did not significantly change.

For additional information, contact the Office of Adult Education and Literacy, Virginia Department of Education, P. O. Box 2120, Richmond, Virginia 23218-2120, 804-876-7644.

Authority for the Report

Section 22.1-254 of the Code of Virginia authorizes school boards to allow the fulfillment of compulsory attendance requirements by any student who is 16 years of age and for whom an Individual Student Alternative Education Plan (ISAEP) is developed. The Virginia Board of Education is charged with development of the guidelines associated with the ISAEP program. The plan must conform to guidelines prescribed by the Board of Education to include:

- (1) Career guidance counseling;
- (2) Mandatory enrollment and attendance in a General Educational Development (GED) preparatory program or other alternative education program approved by the local school board;
- (3) Counseling on the economic impact of failing to complete high school; and
- (4) Procedures for re-enrollment in school.

Item 144 G of the appropriation act, Chapter 951, 2005 Acts of Assembly, requires the Department of Education to monitor the implementation of this program, now called the Individual Student Alternative Education Plan (ISAEP) program, and to provide annual reports to the General Assembly.

Historical Review of the ISAEP Program

The legislation that created the ISAEP program became law on July 1, 1999. In the months that followed, the Board of Education developed guidelines for the program, and the Department of Education established a process for funding local programs and assisted school divisions in developing program components. The first program year was viewed as successful by school divisions, even though it was only a few months in duration. Year two (2000-2001) involved technical assistance visits and regional training primarily to address the planned changeover to a new series of the Tests of General Educational Development (GED) that occurred in January 2002. During 2001-2002, the ISAEP program was characterized by continued technical assistance site visits and training, with increased emphasis on the career and technical education component. Career and technical education benchmarks were established, and three options for career preparation were added to the 2002-03 ISAEP application. During 2002-2003, the Board of Education guidelines for ISAEP programs were revised to reflect score requirement changes resulting from the release of the 2002 series of the Tests of General Educational Development (GED). The new career and technical education benchmarks were also included in the revised guidelines.

State Administrative Activities during the Fifth Year of the Program

During 2003-2004, state staff continued conducting technical assistance site visits to selected programs. Technical assistance and monitoring activities focused on increasing the use of technology to support assessment and instructional activities that prepare students for the 21st century workforce. Staff development focused on strategies for developing effective counseling and transition in programs, effective programs that demonstrated results, and effective strategic instruction for the special needs population.

The following events reflect activities during the sixth year of the ISAEP program (July 1, 2004 - June 30, 2005):

- Department of Education staff attended ISAEP student recognition ceremonies and GED graduations (July 2004 – June 2005).

- Ten school divisions chose not to apply for state ISAEP program funds for the 2004-2005 school year. They identified one of the following reasons: (1) they had a locally developed alternative education program functioning; (2) the ISAEP program did not meet their needs; or (3) they wanted to explore the ISAEP program at a later date
- The Department of Education allocated \$2,247,581 in grants to school divisions, ranging from \$7,859 to \$102,162. Local programs used grant monies to purchase materials and technology for instruction and to secure personnel. The statewide average per pupil allocation was \$370.50, a decrease of 14.7 percent. See Appendix A for per pupil costs by school division.

Local Program Data, 2004-05

In May 2005, the Department of Education instituted an on-line ISAEP Survey data request to participating school divisions. In addition, data were requested through a pencil and paper report form issued by the GED Testing Service of the American Council on Education¹. These data were aggregated with other information collected throughout the 2003-2004 school year. The data highlight student participation rates, the number of students earning the GED credential, student demographics, program profiles, and per-pupil costs. Responses to the request for information on the 2004-2005 programs were received from 126 programs in the 136 participating school divisions.

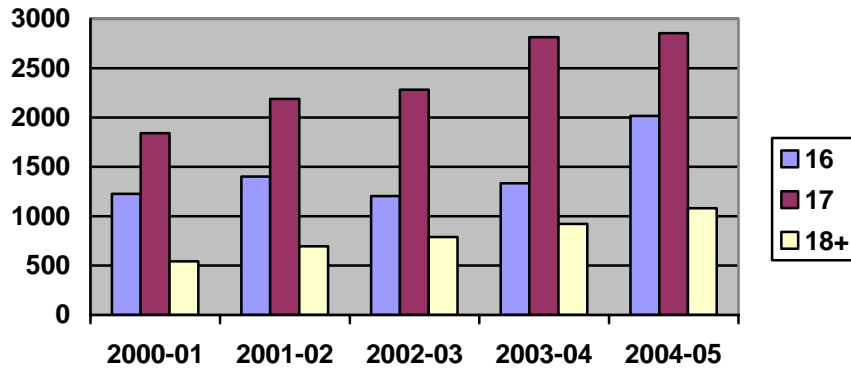
In these two surveys the programs were asked to provide quantitative data pertaining to age, gender, and ethnicity. They were also asked to describe their respective program in qualitative terms, including information about student/teacher ratios, program selection criteria, career counseling and preparation activities, instructional methodologies, curriculum, enrollment and completion data.

School divisions reported 5,950 students between the ages of 16 and 18 plus years qualified for an ISAEP and received services. This represents a substantive increase from the 2003-2004 school year of 17 percent. The percentage of 16-year-old students with an ISAEP substantially increased (66.2 percent), 17-year-old students showed no significant statistical change and 18-year-old student enrollment increased moderately (16.4 percent).

¹ GED Testing Service requires a completed *GED Option Report* as a condition of approval to allow the GED Tests to be administered to students between the ages of 16 and 18 years. Only nine states in the nation have approved GED Option programs. Virginia was the first state to receive this approval.

Figure 1 provides a breakdown of ISAEP participants by age. Increasingly, more students 18 years and older are remaining in the program to earn a GED credential. See Appendix B for age and gender enrollment by school division.

Figure 1 - ISAEP Students Participation by Age



Age	00-01	01-02	02-03	03-04	04-05
16	1,227	1,404	1,205	1,334	2,016
17	1,841	2,189	2,282	2,814	2,853
18 +	541	695	789	923	1,081

Figure 2 provides a breakdown of participation rates based on ethnicity. The rate of participation by selected ethnic groups in 2004-05 changed moderately from 2003-04. Participation by African-American students increased by five percent from 25 percent to 30 percent; participation by Caucasian students decreased by six percent from 70 percent to 64 percent; participation by Hispanic students increased by one percent from four percent to five percent; and there was no statistically significant change relating to other ethnicities. See Appendix C for ethnicity enrollment by school division.

Figure 2 - Participation by Ethnicity Comparing 2002-03 to 2004-05

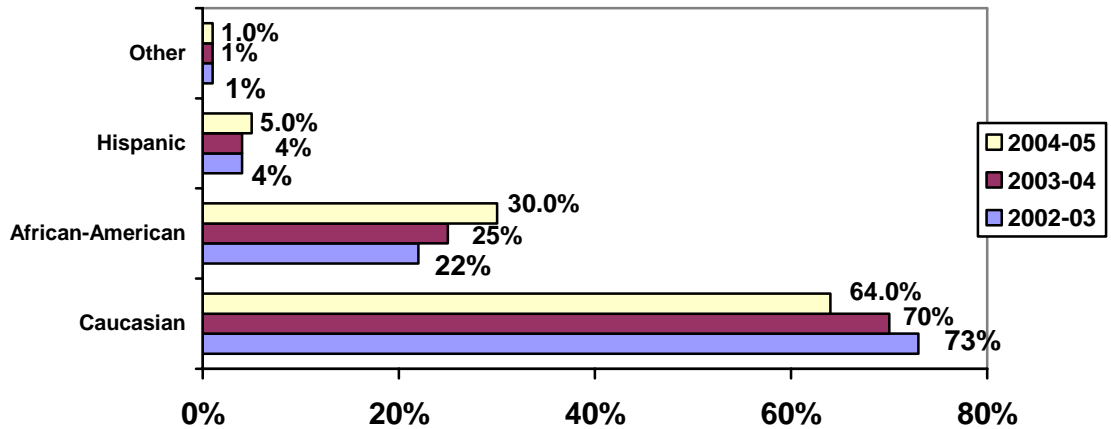
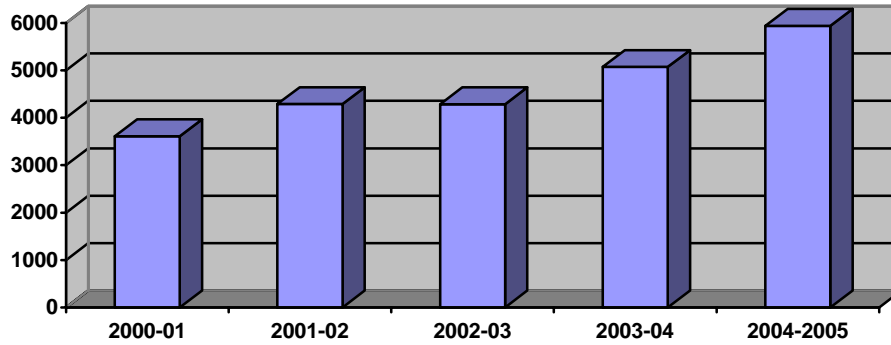


Figure 3 illustrates a 72 percent increase of students with an ISAEP since the first full year of implementation of the program. It should be noted that this increase has been achieved despite insignificant additions in funding.

Figure 3 - Total Number of Students with an ISAEP by School Year



Year	Number of Students
2000- 2001	3,609
2001- 2002	4,288
2002- 2003	4,282
2003- 2004	5,071
2004- 2005	5,950

Major Focus for 2005-2006

In the coming school year, the major focus of the Department of Education's technical assistance will be to:

- Help programs improve academic and career preparation of ISAEP students
- Provide programs with assistance in developing high quality effective programs that demonstrate results
- Help programs improve reporting for formative and summative evaluation purposes
- Ensure fair and equitable access to the ISAEP program for all students

APPENDIX A

ISAEP Allocations and Actual Expenditures

FY 2004-2005

**ISAEP Allocations and Actual Expenditures
FY 2004 - 2005**

Division Code	School Division	Available Funds 2004-2005	Actual Funds Dispersed in 2004-2005	Total Students Served in 2004-2005
1	ACCOMACK	\$15,717.00	\$15,717.00	62
2	ALBEMARLE	\$23,576.00	\$23,576.00	8
101	ALEXANDRIA	\$31,434.00	\$31,434.00	53
3/105	ALLEGHANY/CLIFTON FORGE	\$7,859.00	\$7,859.00	13
4	AMELIA	\$7,859.00	\$7,859.00	1
5	AMHERST	\$15,717.00	\$15,717.00	52
6	APPOMATTOX	\$7,859.00	\$7,859.00	8
7	ARLINGTON	\$31,434.00	\$31,434.00	15
8	AUGUSTA	\$15,717.00	\$15,717.00	59
9	BATH	\$7,859.00	\$7,859.00	3
142	BEDFORD CITY	\$ 7,859.00	\$ 7,859.00	13
10	BEDFORD COUNTY	\$15,717.00	\$15,717.00	41
11	BLAND	\$7,859.00	\$7,859.00	9
12	BOTETOURT	\$7,859.00	\$7,859.00	29
102	BRISTOL	\$7,859.00	\$7,859.00	17
13	BRUNSWICK	\$7,859.00	\$7,859.00	30
14	BUCHANAN	\$23,576.00	\$23,576.00	11
15	BUCKINGHAM	\$7,859.00	\$7,859.00	40
103	BUENA VISTA	\$7,859.00	\$7,850.00	7
16	CAMPBELL	\$15,717.00	\$15,717.00	163
17	CAROLINE	\$15,717.00	\$15,717.00	10
18	CARROLL	\$15,717.00	\$15,717.00	35
19	CHARLES CITY	\$7,859.00	\$7,859.00	5
20	CHARLOTTE	\$7,859.00	\$7,859.00	1
104	CHARLOTTESVILLE	\$15,717	\$15,717.00	69
137	CHESAPEAKE	\$47,152.00	\$47,152.00	89
21	CHESTERFIELD	\$47,152.00	\$47,152.00	79
22	CLARKE	\$7,859.00	No Program	
207	COLONIAL HEIGHTS	\$7,859.00	\$7,859.00	13
107	COVINGTON	\$7,859.00	No Program	
23	CRAIG	\$7,859.00	\$7,859.00	7
24	CULPEPER	\$15,717.00	\$15,717.00	47
25	CUMBERLAND	\$7,859.00	No Program	

**ISAEP Allocations and Actual Expenditures
FY 2004 - 2005**

Division Code	School Division	Available Funds 2004-2005	Actual Funds Dispersed in 2004-2005	Total Students Served in 2004-2005
108	DANVILLE	\$23,576.00	\$23,576.00	66
26	DICKENSON	\$7,859.00	\$7,859.00	15
27	DINWIDDIE	\$7,859.00	\$7,859.00	61
28	ESSEX	\$7,859.00	\$7,859.00	7
135	FAIRFAX CITY	\$7,859.00	\$7,859.00	10
29	FAIRFAX COUNTY	\$102,162.00	\$102,162.00	311
109	FALLS CHURCH	\$7,859.00	No Program	
30	FAUQUIER	\$15,717.00	\$15,717.00	56
31	FLOYD	\$7,859.00	\$7,859.00	16
32	FLUVANNA	\$7,859.00	\$7,859.00	20
33	FRANKLIN COUNTY	\$23,576.00	\$23,576.00	114
136	FRANKLIN CITY	\$7,859.00	\$7,859.00	13
34	FREDERICK	\$23,576.00	\$23,576.00	150
110	FREDERICKSBURG	\$15,717.00	\$15,717.00	150
35	GILES	\$7,859.00	\$7,859.00	19
111	GALAX	\$7,859.00	No Program	
36	GLOUCESTER	\$15,717.00	\$15,717.00	91
37	GOOCHLAND	\$7,859.00	\$7,859.00	26
38	GRAYSON	\$7,859.00	\$7,859.00	18
39	GREENE	\$7,859.00	\$7,859.00	14
40/139	GREENSVILLE/EMPORIA	\$7,859.00	\$7,859.00	9
41	HALIFAX	\$23,576.00	\$23,576.00	25
112	HAMPTON	\$31,434.00	\$31,434.00	252
42	HANOVER	\$23,576.00	\$23,576.00	92
113	HARRISONBURG	\$7,859.00	\$7,859.00	46
43	HENRICO	\$47,152.00	\$47,152.00	190
44	HENRY	\$31,434.00	\$31,434.00	89
45	HIGHLAND	\$7,859.00	\$7,859.00	1
114	HOPEWELL	\$15,717.00	\$15,717.00	55
46	ISLE OF WIGHT	\$15,717.00	\$15,717.00	10
49	KING AND QUEEN	\$7,859.00	No Program	
48	KING GEORGE	\$7,859.00	\$7,859.00	16
50	KING WILLIAM	\$7,859.00	\$7,859.00	15

**ISAEP Allocations and Actual Expenditures
FY 2004 – 2005**

Division Code	School Division	Available Funds 2004-2005	Actual Funds Dispersed in 2004-2005	Total Students Served in 2004-2005
51	LANCASTER	\$7,859.00	\$7,859.00	37
52	LEE	\$15,717.00	\$15,717.00	14
53	LOUDOUN	\$31,434.00	\$31,434.00	60
54	LOUISA	\$7,859.00	\$7,859.00	21
55	LUNENBURG	\$7,859.00	\$7,859.00	0
115	LYNCHBURG	\$23,576.00	\$23,576.00	53
56	MADISON	\$7,859.00	\$7,859.00	7
144	MANASSAS CITY	\$23,576.00	\$23,576.00	34
202	MANASSAS PARK	\$7,859.00	\$7,859.00	25
116	MARTINSVILLE	\$15,717.00	\$15,717.00	29
57	MATHEWS	\$7,859.00	\$7,859.00	1
58	MECKLENBURG	\$15,717.00	\$15,717.00	9
59	MIDDLESEX	\$7,859.00	\$7,859.00	8
60	MONTGOMERY	\$15,717.00	\$15,717.00	10
62	NELSON	\$15,717.00	\$15,717.00	11
63	NEW KENT	\$7,859.00	\$7,859.00	9
117	NEWPORT NEWS	\$47,152.00	\$47,152.00	96
118	NORFOLK	\$62,869.00	\$62,869.00	138
65	NORTHAMPTON	\$7,859.00	\$7,859.00	23
66	NORTHUMBERLAND	\$7,859.00	\$7,859.00	16
119	NORTON	\$7,859.00	No Program	
67	NOTTOWAY	\$7,859.00	\$7,859.00	6
68	ORANGE	\$7,859.00	\$7,859.00	21
69	PAGE	\$15,717.00	\$15,717.00	50
70	PATRICK	\$7,859.00	\$7,859.00	8
120	PETERSBURG	\$23,576.00	\$23,576.00	43
71	PITTSYLVANIA	\$23,576.00	\$23,576.00	31
143	POQUOSON	\$7,859.00	\$7,859.00	13
121	PORTSMOUTH	\$39,293.00	\$39,293.00	62
72	POWHATAN	\$15,717.00	\$15,717.00	16

**ISAEP Allocations and Actual Expenditures
FY 2004 – 2005**

Division Code	School Division	Available Funds 2004-2005	Actual Funds Dispersed in 2004-2005	Total Students Served in 2004-2005
73	PRINCE EDWARD	\$7,859.00	\$7,859.00	12
74	PRINCE GEORGE	\$7,859.00	\$7,859.00	19
75	PRINCE WILLIAM	\$47,152.00	\$47,152.00	176
77	PULASKI	\$15,717.00	\$15,717.00	50
122	RADFORD	\$7,859.00	No Program	
78	RAPPAHANNOCK	\$7,859.00	\$7,859.00	6
123	RICHMOND CITY	\$47,152.00	\$47,152.00	344
79	RICHMOND COUNTY	\$7,859.00	\$7,859.00	37
124	ROANOKE CITY	\$39,293.00	\$39,293.00	33
80	ROANOKE COUNTY	\$15,717.00	\$15,717.00	61
81/138	ROCKBRIDGE/LEXINGTON	\$23,576.00	\$23,576.00	50
82	ROCKINGHAM	\$31,434.00	No Program	
83	RUSSELL	\$15,717.00	\$15,717.00	60
140	SALEM	\$7,859.00	\$7,859.00	45
84	SCOTT	\$7,859.00	\$7,859.00	39
85	SHENANDOAH	\$15,717.00	\$15,717.00	33
86	SMYTH	\$23,576.00	\$23,576.00	44
87	SOUTHAMPTON	\$15,717.00	\$15,717.00	18
88	SPOTSYLVANIA	\$31,434.00	\$31,434.00	111
89	STAFFORD	\$31,434.00	\$31,434.00	117
127	STAUNTON	\$15,717.00	\$15,717.00	51
128	SUFFOLK	\$23,576.00	\$23,576.00	17
90	SURRY	\$7,859.00	\$7,859.00	5
91	SUSSEX	\$7,859.00	\$7,859.00	1
92	TAZEWELL	\$23,576.00	\$23,576.00	101
130	VIRGINIA BEACH	\$62,869.00	\$62,869.00	325
93	WARREN	\$15,717.00	\$15,717.00	121
94	WASHINGTON	\$23,576.00	\$23,576.00	50
131	WAYNESBORO	\$15,717.00	\$15,717.00	55
207	WEST POINT	\$7,859.00	No Program	
95	WESTMORELAND	\$7,859.00	\$7,859.00	37
132	WILLIAMSBURG/JAMES CITY	\$15,717.00	\$15,717.00	67
134	WINCHESTER	\$15,717.00	\$15,717.00	9

**ISAEP Allocations and Actual Expenditures
FY 2004 – 2005**

Division Code	School Division	Available Funds 2004-2005	Actual Funds Dispersed in 2004-2005	Total Students Served in 2004-2005
96	WISE	\$23,576.00	\$23,576.00	22
97	WYTHE	\$15,717.00	\$15,717.00	33
98	YORK	\$15,717.00	\$15,717.00	59
Total		\$2,247,581.00	\$2,200,429.00	6,005

APPENDIX B

Number of Students Enrolled By Age and Gender

FY 2004-2005 ISAEP Students Enrolled by Age and Gender
2004-2005

Division Code	School Division	Age 16		Age 17		Age 18 and +		Total Enrolled	
		M	F	M	F	M	F		
1	ACCOMACK	11	11	17	16	7	0	62	
2	ALBEMARLE	5	1	1	1	0	0	8	
101	ALEXANDRIA	7	6	16	11	7	6	53	
3/105	ALLEGHANY/CLIFTON FORGE	1	2	2	2	3	3	13	
4	AMELIA	1	0	0	0	0	0	1	
5	AMHERST	10	4	17	7	6	8	52	
6	APPOMATTOX	1	2	2	1	1	1	8	
7	ARLINGTON	2	2	9	2	0	0	15	
8	AUGUSTA	4	1	21	11	10	12	59	
9	BATH	0	0	0	1	1	1	3	
142	BEDFORD CITY	5	4	2	2	0	0	13	
10	BEDFORD COUNTY	9	10	7	5	7	3	41	
11	BLAND	5	1	2	1	0	0	9	
12	BOTETOURT	9	6	9	2	2	1	29	
102	BRISTOL	1	1	8	5	2	0	17	
13	BRUNSWICK	11	5	13	1	0	0	30	
14	BUCHANAN	0	0	3	1	3	3	11	
15	BUCKINGHAM	13	5	10	9	1	2	40	
103	BUENA VISTA	4	2	0	1	0	0	7	
16	CAMPBELL	18	9	39	26	41	30	163	
17	CAROLINE	0	0	7	3	0	0	10	
18	CARROLL	5	9	10	8	3	0	35	
19	CHARLES CITY	2	1	2	0	0	0	5	
20	CHARLOTTE	0	0	1	0	0	0	1	
104	CHARLOTTESVILLE	31	18	12	4	2	2	69	
137	CHESAPEAKE	7	7	33	26	10	6	89	
21	CHESTERFIELD	18	14	28	17	1	1	79	
106	COLONIAL HEIGHTS	2	1	0	5	3	2	13	
107	COVINGTON	No Program							
23	CRAIG	4	0	1	2	0	0	7	
24	CULPEPER	12	4	15	14	1	1	47	

FY 2004-2005 ISAEP Students Enrolled by Age and Gender
2004-2005

Division Code	School Division	Age 16		Age 17		Age 18 and +		Total Enrolled
		M	F	M	F	M	F	
25	CUMBERLAND	No Program						
108	DANVILLE	5	5	26	10	6	14	66
26	DICKENSON	2	2	2	7	2	0	15
27	DINWIDDIE	4	6	18	17	10	6	61
28	ESSEX	0	0	2	1	4	0	7
134	FAIRFAX CITY	3	2	4	1	0	0	10
29	FAIRFAX COUNTY	67	54	101	71	16	2	311
109	FALLS CHURCH	No Program						
30	FAUQUIER	28	17	6	5	0	0	56
31	FLOYD	2	2	3	2	5	2	16
32	FLUVANNA	8	2	7	2	1	0	20
135	FRANKLIN CITY	4	1	1	2	2	3	13
33	FRANKLIN COUNTY	19	24	42	13	25	10	133
34	FREDERICK	19	17	39	23	32	20	150
110	FREDERICKSBURG	88	21	16	7	9	9	150
111	GALAX	No Program						
35	GILES	10	3	5	5	4	1	28
36	GLOUCESTER	11	13	25	21	9	13	92
37	GOOCHLAND	6	2	9	3	3	3	26
38	GRAYSON	4	6	4	3	1	0	18
39	GREENE	2	2	6	1	2	1	14
40/139	GREENSVILLE/EMPORIA	4	1	0	1	2	0	8
41	HALIFAX	4	2	9	4	4	2	25
112	HAMPTON	37	44	55	58	40	18	252
42	HANOVER	5	4	12	20	21	30	92
113	HARRISONBURG	5	4	11	11	8	6	45
43	HENRICO	58	42	51	30	2	3	190
44	HENRY	21	24	21	20	2	1	89
114	HOPEWELL	7	4	20	12	1	0	
45	HIGHLAND	0	0	0	0	1	0	1
46	ISLE OF WIGHT	1	2	2	4	0	1	10

FY 2004-2005 ISAEP Students Enrolled by Age and Gender
2004-2005

Division Code	School Division	Age 16		Age 17		Age 18 and +		Total Enrolled	
		M	F	M	F	M	F		
49	KING AND QUEEN	No Program							
48	KING GEORGE	4	5	6	0	1	2	18	
50	KING WILLIAM	1	1	0	0	8	5	15	
51	LANCASTER	9	3	14	8	2	1	37	
52	LEE	1	4	4	5	0	0	14	
53	LOUDOUN	9	11	23	14	2	1	60	
54	LOUISA	4	3	4	2	3	5	21	
55	LUNENBURG	0	0	0	0	0	0	0	
115	LYNCHBURG	19	17	14	3	0	0	53	
56	MADISON	0	0	0	5	0	2	7	
143	MANASSAS CITY	8	6	17	15	18	10	74	
144	MANASSAS PARK	1	2	6	3	10	3	25	
116	MARTINSVILLE	1	1	9	10	4	4	29	
57	MATHEWS	0	1	0	0	0	0	1	
58	MECKLENBURG	0	0	4	0	3	2	9	
59	MIDDLESEX	1	1	3	3	0	0	8	
60	MONTGOMERY	3	0	2	3	1	1	10	
62	NELSON	5	3	1	2	0	1	12	
63	NEW KENT	1	0	5	0	1	2	9	
118	NORFOLK	7	12	38	46	13	22	138	
119	NORTON	No Program							
65	NORTHAMPTON	1	1	5	6	5	5	23	
66	NORTHUMBERLAND	9	3	14	8	2	1	37	
67	NOTTOWAY	2	1	3	0	0	0	6	
68	ORANGE	3	3	6	5	0	0	17	
69	PAGE	1	1	4	10	26	8	50	
70	PATRICK	2	2	2	2	0	0	8	
120	PETERSBURG	1	5	8	14	5	10	43	
71	PITTSYLVANIA	4	3	7	9	3	5	31	
142	POQUOSON	4	0	4	3	1	1	13	
121	PORTSMOUTH	0	1	17	23	7	14	62	

FY 2004-2005 ISAEP Students Enrolled by Age and Gender
2004-2005

Division Code	School Division	Age 16		Age 17		Age 18 and +		Total Enrolled	
		M	F	M	F	M	F		
72	POWHATAN	0	0	8	3	5	0	16	
73	PRINCE EDWARD	5	3	0	2	0	1	11	
74	PRINCE GEORGE	11	2	0	4	1	1	19	
75	PRINCE WILLIAM	34	27	72	29	10	3	175	
77	PULASKI	12	9	20	5	2	2	50	
122	RADFORD	No Program							
78	RAPPAHANNOCK	0	2	4	0	0	0	6	
123	RICHMOND CITY	23	30	60	78	65	88	343	
79	RICHMOND COUNTY	9	3	14	8	2	1	37	
124	ROANOKE CITY	8	10	4	9	2	0	33	
80	ROANOKE COUNTY	2	13	24	15	4	3	61	
81/138	ROCKBRIDGE/LEXINGTON	18	7	13	12	6	4	60	
82	ROCKINGHAM	No Program							
83	RUSSELL	23	9	19	7	0	0	50	
139	SALEM	28	13	2	2	0	0	45	
84	SCOTT	0	0	15	19	5	0	39	
85	SHENANDOAH	15	3	7	5	2	1	33	
86	SMYTH	8	6	13	7	2	5	41	
87	SOUTHAMPTON	0	0	4	0	12	2	18	
88	SPOTSYLVANIA	21	23	21	27	8	11	111	
89	STAFFORD	33	28	22	30	2	2	129	
126	STAUNTON	11	15	9	11	4	1	51	
127	SUFFOLK	4	1	8	3	0	0	16	
90	SURRY	0	0	2	1	2	0	5	
91	SUSSEX	1	0	0	0	0	0	1	
92	TAZEWELL	42	18	16	18	5	2	101	
207	WEST POINT	No Program							
128	VIRGINIA BEACH	47	37	159	82	0	0	338	
93	WARREN	27	30	38	26	7	2	130	
98	WASHINGTON	16	10	13	1	3	1	44	
130	WAYNESBORO	7	7	23	6	5	4	52	

FY 2004-2005 ISAEP Students Enrolled by Age and Gender
2004-2005

Division Code	School Division	Age 16		Age 17		Age 18 and +		Total Enrolled
		M	F	M	F	M	F	
95	WESTMORELAND	9	3	14	8	2	1	37
131	WILLIAMSBURG-JAMES CITY	11	6	24	22	4	0	67
132	WINCHESTER	3	3	2	1	0	0	9
96	WISE	2	5	7	6	1	1	22
97	WYTHE	8	9	0	3	2	1	23
98	YORK	34	14	3	4	4	0	59
	TOTAL	1,167	860	1,672	1,213	618	475	6,005

APPENDIX C

Number of Students Enrolled By Ethnicity

FY 2004-2005

**ISAEP Students Enrolled by Ethnicity
2004 – 2005**

Division Code	School Division	White	African-American	Hispanic	Other	Total	
1	ACCOMACK	19	37	6	0	62	
2	ALBEMARLE	5	3	1	0	8	
101	ALEXANDRIA	9	28	15	1	81	
3/105	ALLEGHANY/CLIFTON FRG	13	0	0	0	13	
4	AMELIA	1	0	0	0	1	
5	AMHERST	29	17	0	6	52	
6	APPOMATTOX	5	2	1	0	8	
7	ARLINGTON	7	2	6	1	16	
8	AUGUSTA	56	3	0	0	59	
9	BATH	3	0	0	0	3	
142	BEDFORD CITY	8	4	1	0	13	
10	BEDFORD COUNTY	29	9	3	0	41	
11	BLAND	9	0	0	0	9	
12	BOTETOURT	29	0	0	0	29	
102	BRISTOL	17	0	0	0	17	
13	BRUNSWICK	6	23	0	0	29	
14	BUCHANAN	11	0	0	0	11	
15	BUCKINGHAM	24	24	0	0	72	
103	BUENA VISTA	6	1	0	0	7	
16	CAMPBELL	126	36	0	0	162	
17	CAROLINE	6	4	0	0	10	
18	CARROLL	35	0	0	0	35	
19	CHARLES CITY	5	0	0	0	5	
20	CHARLOTTE	1	0	0	0	1	
104	CHARLOTTESVILLE	33	22	2	2	69	
137	CHESAPEAKE	57	31	1	0	89	
21	CHESTERFIELD	48	24	3	4	79	
22	CLARKE	1	0	0	0	1	
106	COLONIAL HEIGHTS	13	0	0	0	13	
107	COVINGTON	No Program					
23	CRAIG	3	2	1	1	7	
24	CULPEPER	34	12	0	1	47	
25	CUMBERLAND	No Program					
108	DANVILLE	33	33	0	0	66	

**ISAEP Students Enrolled by Ethnicity
2004 – 2005**

Division Code	School Division	White	African-American	Hispanic	Other	Total
26	DICKENSON	15	0	0	0	15
27	DINWIDDIE	34	25	1	1	61
28	ESSEX	3	4	0	0	7
134	FAIRFAX CITY	7	2	1	0	10
29	FAIRFAX COUNTY	179	46	68	14	307
109	FALLS CHURCH	No Program				
30	FAUQUIER	45	11	0	0	56
31	FLOYD	16	0	0	0	16
32	FLUVANNA	15	4	1	0	20
135	FRANKLIN CITY	0	13	0	0	13
33	FRANKLIN COUNTY	106	23	4	0	133
34	FREDERICK	145	2	3	0	150
110	FREDERICKSBURG	68	73	5	4	150
111	GALAX	No Program				
35	GILES	28	0	0	0	28
36	GLOUCESTER	77	15	0	0	92
37	GOOCHLAND	16	9	0	0	25
38	GRAYSON	16	0	1	0	17
40	GREENSVILLE-EMPORIA	4	5	0	0	9
41	HALIFAX	14	11	0	0	25
112	HAMPTON	118	131	3	0	252
42	HANOVER	71	18	1	0	90
113	HARRISONBURG	31	7	9	0	47
43	HENRICO	98	81	7	4	190
44	HENRY	60	28	0	0	88
114	HOPEWELL	37	16	2	0	55
45	HIGHLAND	1	0	0	0	1
46	ISLE OF WIGHT	3	7	0	0	10
49	KING AND QUEEN	No Program				
48	KING GEORGE	8	7	1	0	16
50	KING WILLIAM	6	9	0	0	15
51	LANCASTER	20	16	1	0	37
52	LEE	15	0	0	0	15
53	LOUDOUN	45	8	5	2	60

**ISAEP Students Enrolled by Ethnicity
2004 – 2005**

Division Code	School Division	White	African-American	Hispanic	Other	Total
54	LOUISA	14	6	1	0	21
55	LUNENBURG	No Program				
115	LYNCHBURG	21	31	1	0	53
56	MADISON	8	0	0	0	8
143	MANASSAS CITY	20	14	0	0	34
144	MANASSAS PARK	13	3	9	1	26
116	MATHEWS	1	0	0	0	1
57	MECKLENBURG	2	6	1	0	9
59	MIDDLESEX	7	1	0	0	8
60	MONTGOMERY	10	0	0	0	10
116	MARTINSVILLE	9	19	1	0	29
62	NELSON	10	0	1	0	11
63	NEW KENT	8	1	0	0	9
117	NEWPORT NEWS	58	33	2	5	98
118	NORFOLK	15	120	3	0	138
119	NORTON	No Program				
65	NORTHAMPTON	5	15	3	0	23
66	NORTHUMBERLAND	12	6	0	0	18
67	NOTTOWAY	5	0	0	0	5
68	ORANGE	15	2	0	0	17
69	PAGE	50	0	0	0	50
70	PATRICK	8	0	0	0	8
120	PETERSBURG	9	0	0	0	9
71	PITTSYLVANIA	26	4	1	0	31
142	POQUOSON	12	0	0	1	13
121	PORTSMOUTH	20	32	0	0	52
72	POWHATAN	13	3	0	0	16
73	PRINCE EDWARD	9	3	1	0	13
74	PRINCE GEORGE	7	11	1	0	19
75	PRINCE WILLIAM	49	11	8	3	71
122	RADFORD	No Program				
78	RAPPAHANNOCK	5	1	0	0	6
123	RICHMOND CITY	10	299	29	6	344
79	RICHMOND COUNTY	6	29	1	1	37

**ISAEP Students Enrolled by Ethnicity
2004 – 2005**

Division Code	School Division	White	African-American	Hispanic	Other	Total
124	ROANOKE CITY	15	10	0	0	25
80	ROANOKE COUNTY	60	1	0	0	61
81/137	ROCKBRIDGE/LEXINGTON	42	8	0	0	50
82	ROCKINGHAM	No Program				
83	RUSSELL	36	19	1	1	57
139	SALEM	41	4	0	0	45
84	SCOTT	38	0	1	0	39
85	SHENANDOAH	22	11	0	0	33
86	SMYTH	40	1	0	0	41
87	SOUTHAMPTON	9	9	0	0	18
88	SPOTSYLVANIA	91	17	2	1	111
89	STAFFORD	89	23	3	0	115
126	STAUNTON	31	20	0	0	51
127	SUFFOLK	5	12	0	0	17
90	SURRY	4	1	0	0	5
91	SUSSEX	1	0	0	0	1
92	TAZEWELL	70	27	3	1	101
207	WEST POINT	No Program				
128	VIRGINIA BEACH	259	58	7	1	325
93	WARREN	119	0	2	0	121
94	WASHINGTON	22	28	0	0	50
130	WAYNESBORO	39	9	4	0	65
95	WESTMORELAND	21	16	0	0	37
131	WILLIAMSBURG-JAMES CITY	42	25	0	0	67
132	WINCHESTER	18	5	1	1	25
96	WISE	22	0	0	0	22
97	WYTHE	15	18	0	0	33
98	YORK	48	7	4	4	63
	Total	3,847	1,799	300	59	6,005
	Percent	64%	30%	5%	0.90%	