



# COMMONWEALTH of VIRGINIA

## DEPARTMENT OF BEHAVIORAL HEALTH AND DEVELOPMENTAL SERVICES

Post Office Box 1797  
Richmond, Virginia 23218-1797

Telephone (804) 786-3921  
Voice/TDD (804) 371-8977  
[www.dbhds.virginia.gov](http://www.dbhds.virginia.gov)

JAMES W. STEWART, III  
INTERIM COMMISSIONER

April 1, 2010

To: The Honorable Robert F. McDonnell, Governor

And

Members, Virginia General Assembly

Item 315.CC.1 of the 2009 *Appropriation Act* requires the Commissioner of the Department of Behavioral Health and Developmental Services (DBHDS)<sup>1</sup> to convene a state and community planning team and develop a timeline to transition, beginning in fiscal year 2010, 88 individuals living at Southeastern Virginia Training Center (SEVTC) to community services.

You received the first report on July 1, 2009. The attached report is an update on the plan and timeline to downsize SEVTC from its current census of 144 individuals beginning on July 1, 2010.

DBHDS is working on a new budget for SEVTC based on 75 beds. The next plan update will be submitted on July 1, 2010. Should you have questions in the interim regarding the progress of this project and/or the estimated timeline, please feel free to contact me at (804) 786-3921.

Sincerely,

A handwritten signature in blue ink that reads "James W. Stewart, III".

James W. Stewart, III  
Commissioner

CC: Hon. William A. Hazel Jr., MD  
Heidi Dix  
Robert D Shrewsberry, Ph.D.  
Bill Echelberger  
Joe Flores  
Susan Massart  
Anthony A. Maggio  
Ruth Anne Walker

<sup>1</sup> Formerly the Department of Mental Health, Mental Retardation, and Substance Abuse Services or DMHMRSAS.



**Item 315 CC. 1 – Progress Report  
on the Plan and Timeline  
for Downsizing Southeastern Virginia Training Center**

**To the Governor and Members of the General Assembly**

**April 1, 2010**

**Item 315 CC. 1 - Progress Report on the Plan and Timeline for Downsizing  
Southeastern Virginia Training Center**

**QUARTERLY UPDATE  
April 1, 2010**

Item 315.CC.1 of the 2009 *Appropriation Act* requires the Commissioner of the Department of Behavioral Health and Developmental Services (DBHDS)<sup>1</sup> to convene a state and community planning team and develop a timeline to transition, beginning in fiscal year 2010, 88 individuals living at Southeastern Virginia Training Center (SEVTC) to community services. The language is outlined below:

*“The state and community planning team, under the direction of the commissioner, shall develop a timeline to appropriately transition 88 state facility consumers beginning in fiscal year 2010 to community services in the locality of their residence prior to admission or the locality of their choice after discharge or to another state facility if individual assessments and service plans have been completed, appropriate community housing is available and consumer choice has been considered. The commissioner shall provide the preliminary plan and timeline to the Governor and the General Assembly by July 1, 2009 and a progress report regarding the plan for resizing and rebuilding the facility by October 1, 2009 and quarterly thereafter until the new facility and community facilities have been constructed and are complete. The final report shall outline the location where patients are discharged and any cost savings associated with the facility resizing and community transition.”*

This report is an update to the July 1, 2009 preliminary plan and timeline to downsize SEVTC from its current census of 144 individuals beginning on July 1, 2010.

The 2009 General Assembly also required DGS with the cooperation and support of DBHDS to rebuild and resize SEVTC to 75 beds beginning in fiscal year 2010:

*C-103.05. A. Notwithstanding any other provision of law, the following provisions shall be implemented:*

- 1. The Department of General Services (DGS), with the cooperation and support of the Department of Mental Health, Mental Retardation and Substance Abuse Services (DMHMRSAS), shall rebuild and resize the Southeastern Virginia Training Center to a 75-bed facility to serve profound and severely disabled clients;*
- 2. The Director, Department of Planning and Budget, shall transfer \$23,768,000 of the amount appropriated in Chapter 1 and Chapter 2, 2008 Acts of Assembly, Special Session I for project 17458 (Repair/Replace Southeastern Virginia Training Center) for the purpose stated in paragraph A.1. of this item;*
- 3. The Department of General Services, with the cooperation and support of the Department of Mental Health, Mental Retardation and Substance Abuse Services (DMHMRSAS), shall build, acquire, or renovate 12 community-based Intermediate Care Facilities (ICF-MR) and 6 MR Homes in Health Planning Region V. Priority should be given to projects which can be*

---

<sup>1</sup> Formerly the Department of Mental Health, Mental Retardation, and Substance Abuse Services or DMHMRSAS.

*completed on existing state-owned property within Health Planning Region V;*  
*4. The Director, Department of Planning and Budget shall transfer \$8,438,160 of the amount appropriated in Chapter 1 and Chapter 2, 2008 Acts of Assembly, Special Session I for project 17457, (Repair/Replace Central Virginia Training Center) for the purpose stated in paragraph A.3. of this item.*

The plan outlined in Appendix A is an update to the original plan submitted on July 1, 2009 and measures the progress in meeting the expectations and goals outlined in the original plan. The plan seeks to reduce the number of individuals living at SEVTC from the current census of 144 to 75 or fewer individuals during the next two fiscal years, with significant completion of community and SEVTC construction on or before September 30, 2011. The three major components driving the preliminary plan and timeline are:

- Assessments of individuals residing at SEVTC and family choice;
- SEVTC and community housing construction; and
- Workforce transition.

Appendix A contains an update to the detailed plan and timelines to transition individuals to the community. The components and major milestones of the plan were developed in consultation with the state and community planning team referenced in Item 315.CC.1, known as the SEVTC Advisory Committee. The Advisory Committee has been meeting regularly each month since January 2009 and includes SEVTC facility staff, individuals living at SEVTC, family members, community services board (CSB) representatives, private providers, and other key stakeholders.<sup>2</sup>

#### Assessments and Choice:

Every individual living at SEVTC must be assessed to determine their individual support needs and interest in living in the community. CSB intellectual disability (ID) case managers and directors have been working with facility staff, family members, and individuals at SEVTC since January 2009 to determine the individual needs of every person living at SEVTC. Needs are assessed through a variety of tools, including service treatment plans, medical history, and the Supports Intensity Scale (SIS) instrument.

The SIS is an assessment scale that measures the level of intensity of supports needed by the individual to maintain a life-style appropriate to his or her age and preferences. It was recently adopted by the Commonwealth as a uniform assessment instrument for all persons living in a state-operated training center or who are being served under the ID Waiver.

SIS assessments have shown that there are very few individuals, if any, being served at SEVTC for whom there cannot be found someone currently living in the community whose needs are just as great. It is also very true that the population of individuals at SEVTC as a whole has far greater needs than the average needs of individuals being supported through community services. It is especially important that great care be given to find the most appropriate match between each individual and the services provider.

---

<sup>2</sup> Information about the Advisory Committee, members, and meeting minutes can be viewed at:  
<http://www.dbhds.virginia.gov/10Budget/sevtc.htm>

CSB case managers have been providing information to families upon request about the possible options that currently exist in the community system, setting up tours, and providing assistance where needed. The following activities have been completed or are ongoing to date:

- CSB ID directors and case managers engaged with SEVTC families to discuss community options (ongoing).
- All SIS assessments completed by June 1, 2009. These assessments will be combined with other information about individuals to determine potential community placement options (June 2009).
- Developing criteria to determine which individuals will likely continue to reside at the new 75-bed SEVTC and which individuals should explore community placement options (August 2009).

The following process has been piloted and shared with the SEVTC Advisory Committee to assess whether individuals will likely continue to reside at the new 75-bed SEVTC or should explore community options:

- *Clinical Committee:* SEVTC professional staff will meet and use assessment data and information contained in the resident record to develop “blind” profiles of each individual living at SEVTC and their support needs. These “blind” profiles are stripped of any identifying information and then given to a selection committee.
- *Selection Committee:* The selection committee is composed of SEVTC staff and ID Directors from four CSBs who rate each person on each of the elements from the assessment information and profiles on a five point Likert scale. Those summaries are then arranged into three groups: (1) those likely to reside at the new 75-bed SEVTC group; (2) those who should consider a community ICF/MR group; and (3) those who should consider a waiver home. The following criteria is used by the selection committee to determine which of these three placement options are most appropriate:
  - **Those with significant support needs related to behavior**
    1. Safety/security needs
    2. Mechanical/physical restraint or medication on an emergency basis
    3. Intensive behavioral support due to aggression, property destruction, running away, self-injury, sexual behavior, or other individual behavior support considerations.
  - **Those with significant support needs related to health and medical issues**
    1. Extensive support due to impaired functional mobility such as upper and lower extremity involvement, non-ambulatory, or ambulatory/wheelchair.
    2. Specialized support for meals and feeding.
    3. High risk or specialized medical conditions
  - **Those with significant staffing support requirements**
    1. Support staff (1:1, Continuous, Routine/General)

2. Nursing (Immediate support, within 1 hour, within 1 day, within 1 week and/or continuous nursing treatment, hourly treatment, daily treatment, weekly treatment)

- **Those with additional considerations**

1. Age or other factors
2. Family and individual choice

- *Oversight Committee:* A committee composed of the SEVTC facility director, Region V CSB executive directors, another training center director, parents, and Central Office representatives oversee the work of the clinical and selection committees to ensure they are blind, fair, and updated frequently to ensure the most recent clinical and behavioral needs of individuals are included in the assessments.

The pilot process was first conducted in July and updated in October 2009 and March 2010. The process has yielded preliminary information on how many residents currently require SEVTC services and those individuals that could live in the community with appropriate supports and planning. This information is shown below. The profiles and the committees will meet regularly until both the community and new SEVTC construction is complete to ensure the latest needs of individuals are included in placement decisions.

<b>CSB</b>	<b>SEVTC</b>	<b>COMMUNITY</b>	<b>TOTAL</b>
Chesapeake	6	5	11
Colonial	6	2	8
Eastern Shore	3	4	7
Hampton/Newport News	19	14	33
Middle Peninsula	0	4	4
Norfolk	13	16	29
Portsmouth	4	14	18
Virginia Beach	13	12	25
Western Tidewater	3	7	10
Other	1	2	3
<b>TOTAL</b>	<b>68</b>	<b>80</b>	<b>148</b>

It is anticipated that CSB and SEVTC staff will begin to contact individuals who are likely to meet the criteria for community placement during the spring of 2010. The CSB case managers and ID Directors will directly engage each individual who meets community placement criteria and their family members for private discussions about placement and community options that will meet the individual's needs. The July 1, 2010 update will provide more information about how many individuals have committed to specific community placements.

Construction of SEVTC and Community Homes:

The 2009 General Assembly required the Department of General Services (DGS), in collaboration with DBHDS, to rebuild and resize SEVTC to a 75-bed facility beginning in fiscal year 2010. The General Assembly also requires DGS, in collaboration with DBHDS, to construct or renovate 12 community ICFs/MR and six waiver homes in Health Planning Region V for

residents of SEVTC. Based on these requirements, DGS accepted an unsolicited Public-Private Education and Infrastructure Act (PPEA) proposal in April 2009 and received one competing proposal in July 2009. The following table outlines the timeline for construction:

<b>April 2009:</b>	Accepted unsolicited PPEA
<b>July 17, 2009:</b>	PPEA advertising period closed, two proposals for: -Rebuild and re-size current SEVTC at 75-beds -Construct 12 community ICFs/MR in HPR-V -Construct 6 waiver homes in HPR-V
<b>Aug – Dec 2009:</b>	DGS, DBHDS, and evaluation committee develops detailed construction requirements
<b>Nov 2, 2009:</b>	Part 2 - Detailed response from developers submitted
<b>December 2009:</b>	Selection of developer
<b>Jan – June 2010:</b>	Negotiate agreements, design phase
<b>July 2010:</b>	SEVTC construction begins
<b>August 2010:</b>	Community construction begins
<b>Sept 2011:</b>	Construction complete

These construction projects are critical to building the community capacity needed to transition individuals from SEVTC to community homes. DBHDS is working closely with local CSB executive directors to ensure the assessment group’s work is closely tied to the construction timelines for community homes. In addition, community CSBs and DBHDS are working to ensure:

- Waiver homes and ICFs/MR built within each CSBs’ jurisdiction reflect needs of the people currently receiving services at SEVTC who will move to the community.
- ICF/MR certification process and waiver home licensing processes can be completed in a timely manner to ensure no delay for individuals transitioning to community placements once construction is completed.
- In cooperation with DGS, determine how the \$8.4 million in community capital funding will be quickly accessed for construction, as well as when and how ownership of the 18 community homes will be transferred from the Commonwealth to CSBs.
- Mechanisms are explored for CSBs to address start-up costs and other expenses related to community capacity building that cannot be funded with the \$8.4 million.

Workforce Transition:

DBHDS human resources staff has met several times in 2009 with SEVTC staff, CSBs and private providers to discuss course content, job skills and other information that will be helpful for staff as they transition to positions in the community. Now that the PPEA is awarded and timelines for construction of community waiver homes and ICFs/MR are known, a workforce transition plan can be developed. The workforce transition plan will be provided in the July 1, 2010 update.

State and Local Coordination:

Appendix A contains a detailed chart outlining the major milestones in the plan and updates since the plan was first submitted on July 1, 2009. Revised items reflect changes to the timeline since the July 1, 2009 report. The majority of the changes reflect modifications to the PPEA process. These modifications were made to enable closer consideration of the two developers who have submitted proposals. WM Jordan was selected as the developer in December 2009. WM Jordan will provide construction services for both the new 75-bed facility and the 18 community homes. The basic floor plans for the new facility and 18 community homes are attached in Appendix B.

A critical driver in ensuring timelines in Appendix A are met is the leadership and collaboration of local CSBs and SEVTC staff. DBHDS has been working closely with the Health Planning Region V CSB executive directors, the SEVTC facility director, and others to determine the criteria that will be used to engage families and individuals at SEVTC who could potentially reside in the community. This work will continue until the completion of construction at SEVTC in September 2011.

At this time, the local CSBs have agreed to the following and are working actively with WM Jordan to identify specific site locations for homes.

<b>CSB</b>	<b>ICF/MR</b>	<b>Waiver</b>	<b>TOTAL</b>
Chesapeake	2	0	2
Colonial	1	0	1
Eastern Shore	0	0	0
Hampton/Newport News	2	1	3
Middle Peninsula	0	2	2
Norfolk	1	2	3
Portsmouth	0	0	0
Virginia Beach	2	1	3
Western Tidewater	3	0	3
Other (TBD)	1	0	1
<b>TOTAL</b>	<b>12</b>	<b>6</b>	<b>18</b>

Since the last quarterly update, a technical assistance workgroup has been formed to assist the local CSBs with preparation for community ICF-MR certification. This workgroup convened on March 10, 2010 and is anticipated to continue its work until all 12 community ICFs are certified by Virginia Department of Health.

Another critical partnership is that of DGS and DBHDS. DBHDS continues to work closely with DGS to ensure the bricks and mortar aspects of building and development match the needs of the individuals to be served and the local CSB who will be providing supports to these individuals. DBHDS anticipates maintaining this relationship going forward throughout the construction and downsizing process to ensure completion of the community homes and the new 75-bed facility.



DBHDS continues to work closely with family members, private providers, and others through the SEVTC Advisory Committee. This group provides general oversight on timelines and planning and ensures there is adequate family and provider input into the development of community and facility resources. We anticipate this group will continue to meet regularly until most of the construction and community transitions have been completed.

Table 1 shows changes in the census over time. This table includes admissions for emergency stays. Emergency stays are used for stabilization and behavioral consultation. Once people are stabilized they return to their community placements. DBHDS will construct 75 beds, anticipating that a portion of the 75 beds at the new facility must be open to accept individuals with intellectual disabilities who live in the community and may require short-term stays for crisis stabilization, behavioral intervention and assistance, and/or an enhanced level of medical care for short time periods.

**Table 1: SEVTC Census June 30 – March 31, 2010**

<b>Quarter Ending</b>	<b>Emergency Admissions</b>	<b>Regular Admissions</b>	<b>Emergency Discharges</b>	<b>Regular Discharges</b>	<b>Deaths</b>	<b>Total Census</b>
June 30, 2009	NA	NA	NA	NA	NA	<b>156</b>
September 30, 2009	5	0	3	5	1	152
December 31, 2009	0	0	2	4	0	146
March 31, 2010	5	0	5	2	0	144

**PROPOSED SEVTC TIMELINE and PLAN FOR DOWNSIZING – APPENDIX A  
QUARTERLY UPDATE – April 1, 2010**

	APRIL 2009		MAY 2009		JUNE 2009	
	IMPLEMENTATION ACTIONS	TARGET DATE	IMPLEMENTATION ACTIONS	TARGET DATE	IMPLEMENTATION ACTIONS	TARGET DATE
ASSESSMENTS & CHOICE	<ul style="list-style-type: none"> <li>Advisory Committee meets</li> </ul>	April 25, 2009	<ul style="list-style-type: none"> <li>Advisory Committee meets</li> </ul>	May 24, 2009	<ul style="list-style-type: none"> <li>All SIS assessments completed</li> </ul>	June 1, 2009
	<ul style="list-style-type: none"> <li>ID Directors begin working directly with families</li> </ul>	April 1 – 30, 2009	<ul style="list-style-type: none"> <li>ID Directors working directly with families</li> </ul>	May 1 – 30, 2009	<ul style="list-style-type: none"> <li>ID Directors working directly with families</li> </ul>	June 1 – 30, 2009
	<ul style="list-style-type: none"> <li>SIS assessments ongoing</li> </ul>	April 1 – 30, 2009	<ul style="list-style-type: none"> <li>SIS assessments ongoing</li> </ul>	May 1 – 30, 2009	<ul style="list-style-type: none"> <li>Advisory Committee meets</li> <li>Assessment group formed and criteria for determining whether individuals will remain at SEVTC or can live in the community developed “Handbook” regarding transition to the community completed and distributed to families</li> </ul>	June 25, 2009 June 30, 2009 June 30, 2009
NEW SEVTC CONSTRUCTION	<ul style="list-style-type: none"> <li>DGS receives unsolicited PPEA for rebuild of SEVTC and 18 community homes</li> </ul>	April 20, 2009	<ul style="list-style-type: none"> <li>DGS advertises for competing PPEA proposals</li> <li>DGS assigns project manager (same for SEVTC and community project)</li> </ul>	May 1, 2009 – July 17, 2009 May 30, 2009	<ul style="list-style-type: none"> <li>DGS continues advertisement for competing PPEA proposals</li> <li>DGS/DMHMRSAS prepares criteria for selection of PPEA developer and creates review panel</li> </ul>	May 1, 2009 – July 17, 2009 June 30, 2009
	<ul style="list-style-type: none"> <li>DGS receives unsolicited PPEA for rebuild of SEVTC and 18 community homes</li> </ul>	April 20, 2009	<ul style="list-style-type: none"> <li>DGS advertises for competing PPEA proposals</li> <li>DGS assigns project manager (same for SEVTC and community project)</li> </ul>	May 1, 2009 – July 17, 2009 May 30, 2009	<ul style="list-style-type: none"> <li>DGS continues advertisement for competing PPEA proposals</li> <li>Capital Investment Committee meets with DGS provides input</li> <li>DGS/DMHMRSAS prepares criteria for selection of PPEA developer and creates review panel</li> </ul>	May 1, 2009 – July 17, 2009 June 16, 2009 June 30, 2009
COMMUNITY						
WORKFORCE						

**PROPOSED SEVTC TIMELINE and PLAN FOR DOWNSIZING – APPENDIX A  
QUARTERLY UPDATE – April 1, 2010**

	JULY 2009		AUGUST 2009		SEPTEMBER 2009	
	IMPLEMENTATION ACTIONS	TARGET DATE	IMPLEMENTATION ACTIONS	TARGET DATE	IMPLEMENTATION ACTIONS	TARGET DATE
ASSESSMENT & CHOICE	<ul style="list-style-type: none"> <li>ID Directors working directly with families</li> </ul>	July 1 – 31, 2009	<ul style="list-style-type: none"> <li>ID Directors working directly with families</li> </ul>	August 1 – 31, 2009	<ul style="list-style-type: none"> <li><del>All families have been exposed to community options</del></li> </ul>	September 30, 2009
	<ul style="list-style-type: none"> <li>Clinical Committee meets and develops blind profiles to pilot selection process</li> </ul>	July 15, 2009	<ul style="list-style-type: none"> <li>Pilot selection process and criteria shared with Advisory Committee</li> </ul>	August 6, 2009	<ul style="list-style-type: none"> <li>Letter sent to SEVTC parents regarding selection criteria and process</li> </ul>	September 1, 2009
	<ul style="list-style-type: none"> <li>Selection committee meets to pilot selection process</li> <li>Advisory Committee meets</li> </ul>	July 30, 2009  July 25, 2009			<ul style="list-style-type: none"> <li>Advisory Committee meets</li> </ul>	September 24, 2009
NEW SEVTC CONSTRUCTION	<ul style="list-style-type: none"> <li>DGS receives final proposals for SEVTC and community homes construction</li> </ul>	July 17 2009	<ul style="list-style-type: none"> <li>DGS/DBHDS evaluation committee meets to evaluate PPEA proposals</li> <li>Begin negotiation of interim agreement</li> </ul>	August 17 & 28, 2009  August 17, 2009	<ul style="list-style-type: none"> <li><del>Interim agreement signed</del></li> </ul>	September 1, 2009
	<ul style="list-style-type: none"> <li>DGS receives final proposals for SEVTC and community homes construction</li> </ul>	July 17 2009	<ul style="list-style-type: none"> <li>DGS/DBHDS evaluation committee meets to evaluate PPEA proposals</li> <li><del>Begin negotiation of interim agreement</del></li> <li>CSB directors work with DMHMRSAS and DGS to determine potential locations for community homes based on financing model offered by PPEA awardee</li> </ul>	August 17 & 28, 2009  August 17, 2009  August 1 – 31, 2009	<ul style="list-style-type: none"> <li><del>Interim agreement signed</del></li> <li><del>CSBs determine final locations for community homes based on PPEA proposal and financing options</del></li> <li>CSB directors work with DMHMRSAS and DGS to determine potential locations for community homes based on financing model offered by PPEA awardee</li> </ul>	September 1, 2009  September 30, 2009  September 1 – 30, 2009
WORK FORCE						

**PROPOSED SEVTC TIMELINE and PLAN FOR DOWNSIZING – APPENDIX A  
QUARTERLY UPDATE – April 1, 2010**

	OCTOBER - DECEMBER 2009		JANUARY 2010 – MARCH 2010		APRIL 2010 – JUNE 2010	
	IMPLEMENTATION ACTIONS	TARGET DATE	IMPLEMENTATION ACTIONS	TARGET DATE	IMPLEMENTATION ACTIONS	TARGET DATE
ASSESSMENT & CHOICE	<ul style="list-style-type: none"> <li>Advisory Committee meets monthly</li> </ul>	October 1 – December 31, 2009	<ul style="list-style-type: none"> <li>Selection committee meets in anticipation of community transitions</li> </ul>	March 15, 2010	<ul style="list-style-type: none"> <li>Selection committee meets every 30 days</li> <li>CSBs directly engage families and individuals who meet community criteria</li> </ul>	April 15, May 15, June 15, 2010 April – June 2010
NEW SEVTC CONSTRUCTION	<ul style="list-style-type: none"> <li>Space and design phase continues for SEVTC</li> <li>Comprehensive agreement signed</li> <li>Detailed response from developers due</li> <li>Developer selected</li> </ul>	October 1 – December 31, 2009  December 21, 2009  November 2, 2009  December 2009	<ul style="list-style-type: none"> <li>Design of SEVTC completed</li> <li>SEVTC on-campus site development and assessments</li> <li>Design phase and interim agreements completed</li> </ul>	February 2010  March 31, 2010  March 31, 2010	<ul style="list-style-type: none"> <li>SEVTC on-campus construction begins</li> </ul>	June 2010
COMMUNITY	<ul style="list-style-type: none"> <li>Property acquisition for community homes begins</li> <li>Complete community housing design</li> <li>Comprehensive agreement signed</li> <li>Detailed response from developers due</li> <li>Developer selected</li> </ul>	October 1 – December 31, 2009  December 31, 2009  December 31, 2009  November 2, 2009  December 2009	<ul style="list-style-type: none"> <li>Design phase and interim agreements completed</li> <li>Property acquisition for community homes begins</li> <li>ICF/MR technical assistance group begins</li> </ul>	March 31, 2010  Jan – March 31, 2010  March 10, 2010	<ul style="list-style-type: none"> <li>Construction of community homes begins</li> <li>ICF/MR Certification technical assistance workgroup continues</li> </ul>	June 2010  April - June 2010
WORKFORCE	<ul style="list-style-type: none"> <li>Workforce reduction plan for SEVTC proposed based on PPEA construction timelines and location of community homes</li> <li>SEVTC staff training assessments and plan for transitioning workforce to community homes developed</li> </ul>	October 31, 2009  November 30, 2009	<ul style="list-style-type: none"> <li>Workforce reduction plan for SEVTC proposed based on PPEA construction timelines and location of community homes</li> <li>SEVTC staff training assessments and plan for transitioning workforce to community homes developed</li> <li>Staff training in community competencies begins</li> </ul>	January 31, 2010	<ul style="list-style-type: none"> <li>Workforce reduction plan for SEVTC proposed based on PPEA construction timelines and location of community homes</li> <li>SEVTC staff training assessments and plan for transitioning workforce to community homes developed</li> </ul>	April 1 – June 30, 2010

**PROPOSED SEVTC TIMELINE and PLAN FOR DOWNSIZING – APPENDIX A  
QUARTERLY UPDATE – April 1, 2010**

		JULY – SEPTEMBER 2010		OCTOBER –DECEMBER 2010		JANUARY – SEPTEMBER 2011	
		IMPLEMENTATION ACTIONS	TARGET DATE	IMPLEMENTATION ACTIONS	TARGET DATE	IMPLEMENTATION ACTIONS	TARGET DATE
ASSESSMENTS AND CHOICE	<ul style="list-style-type: none"> <li>CSBs directly engaging families to explore community options</li> </ul>	July 1 – September 30, 2010	<ul style="list-style-type: none"> <li>CSBs directly engaging families to explore community options</li> </ul>	October 1 – December 31, 2010	<ul style="list-style-type: none"> <li><i>At least 75 individuals transitioned to community settings (90 beds constructed in the community)</i></li> </ul>		
	NEW SEVTC CONSTRUCTION	<ul style="list-style-type: none"> <li>SEVTC Construction begins</li> </ul>	July 1 – September 30, 2010	<ul style="list-style-type: none"> <li>SEVTC Construction ongoing</li> </ul>	October 1 – December 31, 2010	<ul style="list-style-type: none"> <li>SEVTC Construction Completed</li> </ul>	September, 2011
COMMUNITY	<ul style="list-style-type: none"> <li>Community construction begins</li> <li>ICF/MR Certification technical assistance workgroup continues</li> </ul>	July 1 - September 30, 2010 July 1 - September 30, 2010	<ul style="list-style-type: none"> <li><del>Some community ICF/MR completed</del></li> <li>Community construction continues</li> <li>ICF/MR Certification technical assistance workgroup continues</li> </ul>	<del>October 31, 2010</del> October 1 – December 31, 2010 October 1 – December 31, 2010	<ul style="list-style-type: none"> <li>Community construction completed, homes begin to come online in January 2011</li> </ul>	September 2011	
	WORKFORCE	<ul style="list-style-type: none"> <li>Staff training in community competencies begins</li> </ul>	July 1 – September 30 , 2010	<ul style="list-style-type: none"> <li>Some SEVTC staff transition with residents to community placements (dependent on location and other factors)</li> </ul>	October 1 – December 31, 2010	<ul style="list-style-type: none"> <li>Some SEVTC staff transition with residents to community placements</li> </ul>	January – September 2011

# **Southeastern Virginia Training Center**

Advisory Committee Meeting

January 26, 2010

# PPEA Developer Selection Update

- Developer: W. M. Jordon
- Architect of Record: RRMM
- Architectural Consultant: Paul Finch & Assoc.
- Status:
  - Interim Agreement executed
  - Organizational meeting held 1/19/2010

**SEVTC DESIGN PRESENTATIONS – APPENDIX B  
QUARTERLY UPDATE – April 1, 2010**

<b>ICF-MR 5 Bedroom Home</b>	<b>No. of Spaces</b>	<b>Size is SF</b>	<b>Total SF</b>	<b>FF&amp;E</b>
Bedroom	5	150	725	Beds, hospital in 11 homes, double beds in 4 homes, closet
Toilets with HC tub	1	120	120	Lift at tub
Toilets with shower	1	120	120	Shower with HC seat
Half bath	1	60	60	HC accessible
Residential standard living room	1	200	180	Couch, love seat, 3 chairs, coffee tables, 4 end tables, media cabinet
Residential standard dining room	1	180	180	Dining table with 6 chairs, side board, server
Family room	1	150	150	Couch, love seat, 3 chairs, coffee tables, 4 end tables, media cabinet
Unit manager office	1	110	110	Desk with L return, credenza, desk chair, 4 shelf bookcase, 4 drawer file cabinet
Unit staff office	1	150	150	3 workstations with chairs, staff wall lockers, locked medicine closet
Unit staff toilet	1	60	60	HC accessible
Residential kitchen	1	180	180	Double wall over, cooktop, Hobart Dw (H20 temp) upright refrigerator, upright freezer, double deep bowl, 7" sink with disposer, sold surface counter tops
Pantry	1	60	60	Metal shelving
Unit linen storage	2	50	100	Metal shelving, clean and soiled linen storage
Unit laundry	1	160	160	2 washers and dryers front loaders, folding area
Residential clothing storage	1	200	200	Shelving with assigned areas for resident
Garage	1	553	552	
Porch	1	200	200	Enclosed
Electric room	1			
Data communication room	1			
HVAC and HWH room and Housekeeping room	1			
Foyers/halls			1713	
<b>TOTAL GSF</b>			<b>5020</b>	

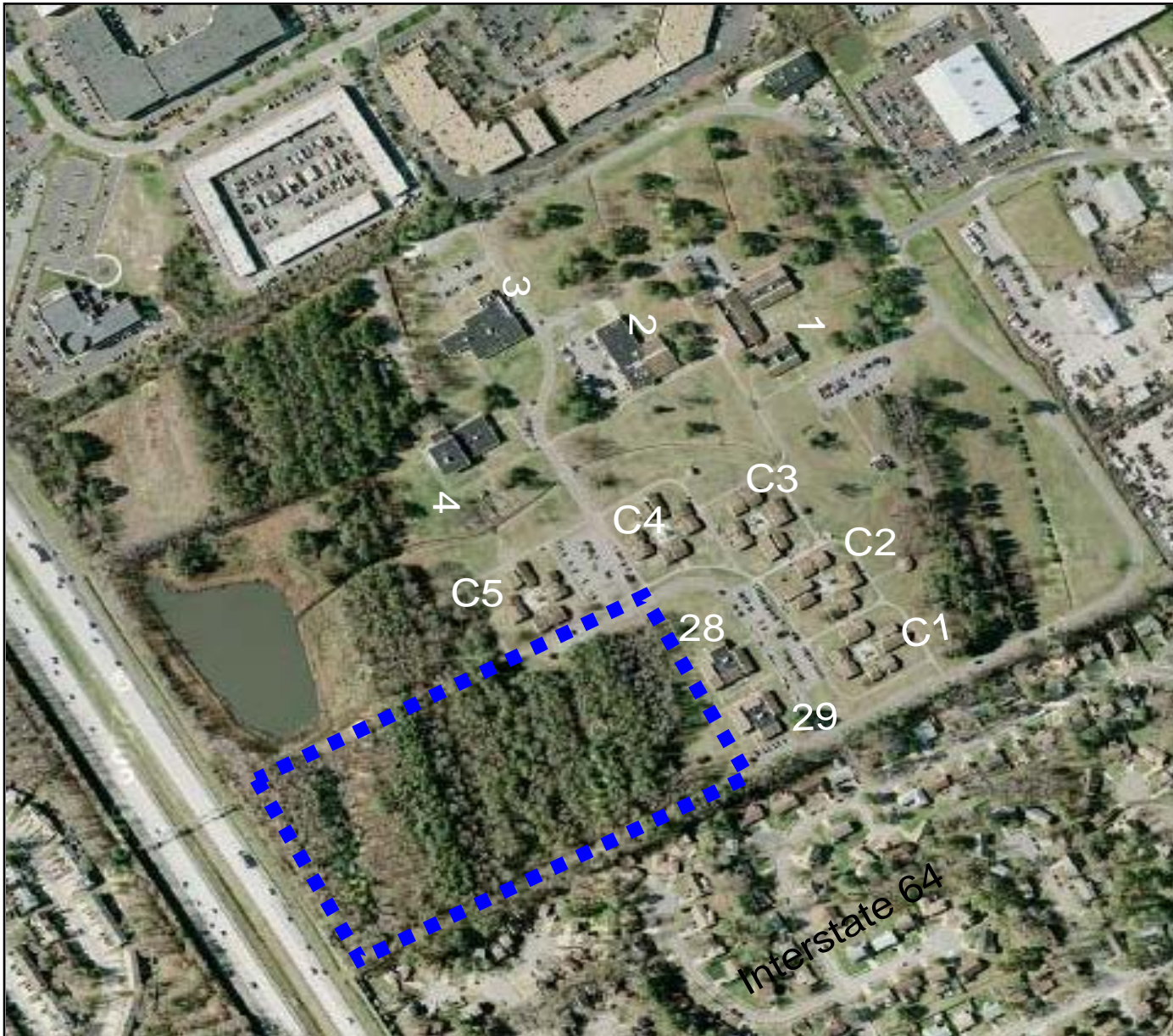


## Southeastern Virginia Training Center



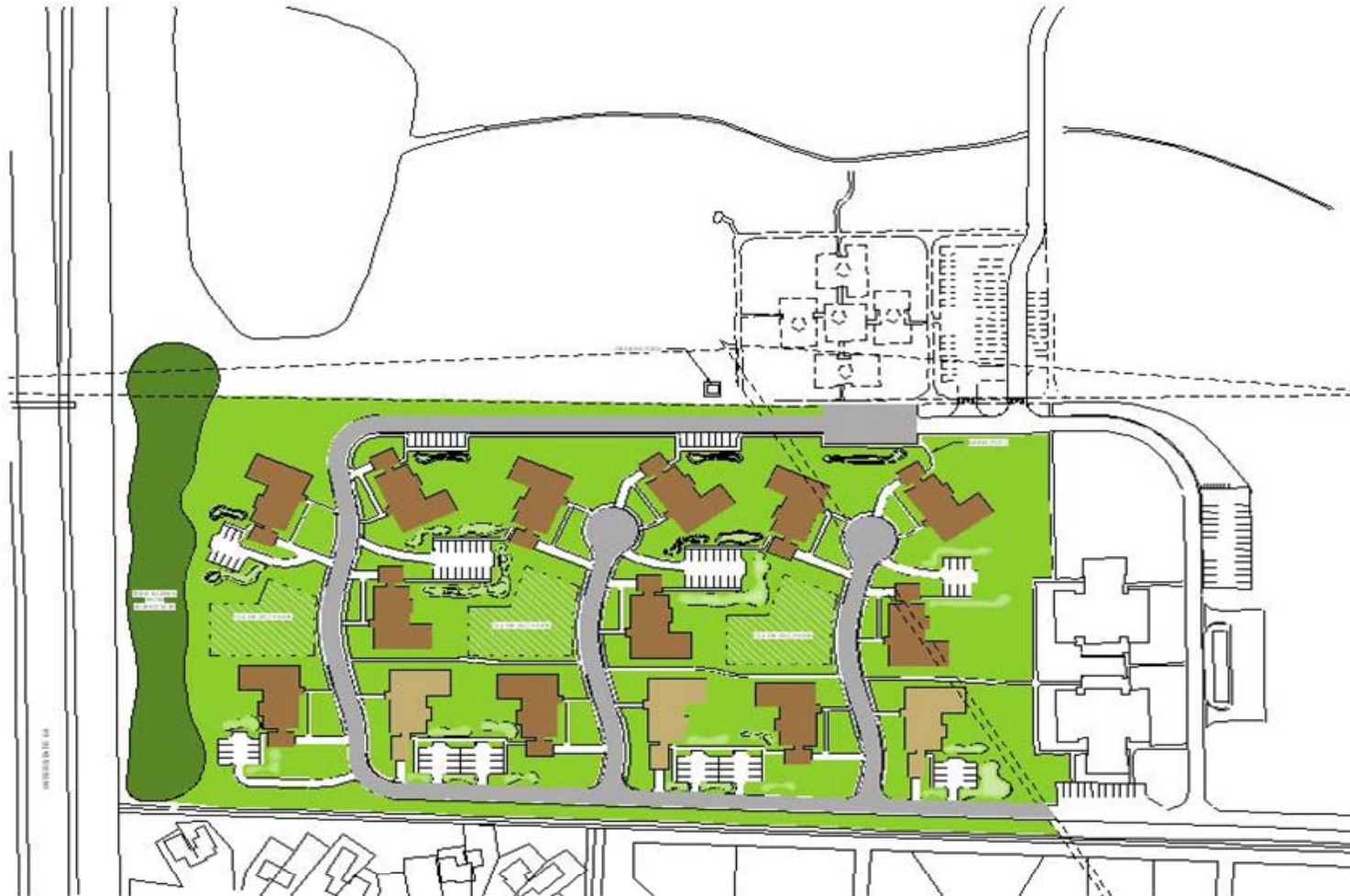
- 1: Administration
- 2: Food Service/Supply
- 3: Vocational Training
- 4: Physical Education
- C1: 4 Residence Cottages
- C2: 4 Residences Cottages
- C3: 4 Residences Cottages
- C4: 4 Residences Cottages
- C5: 4 Residences Cottages
- 28: Residence
- 29: Program/Training

## Southeastern Virginia Training Center

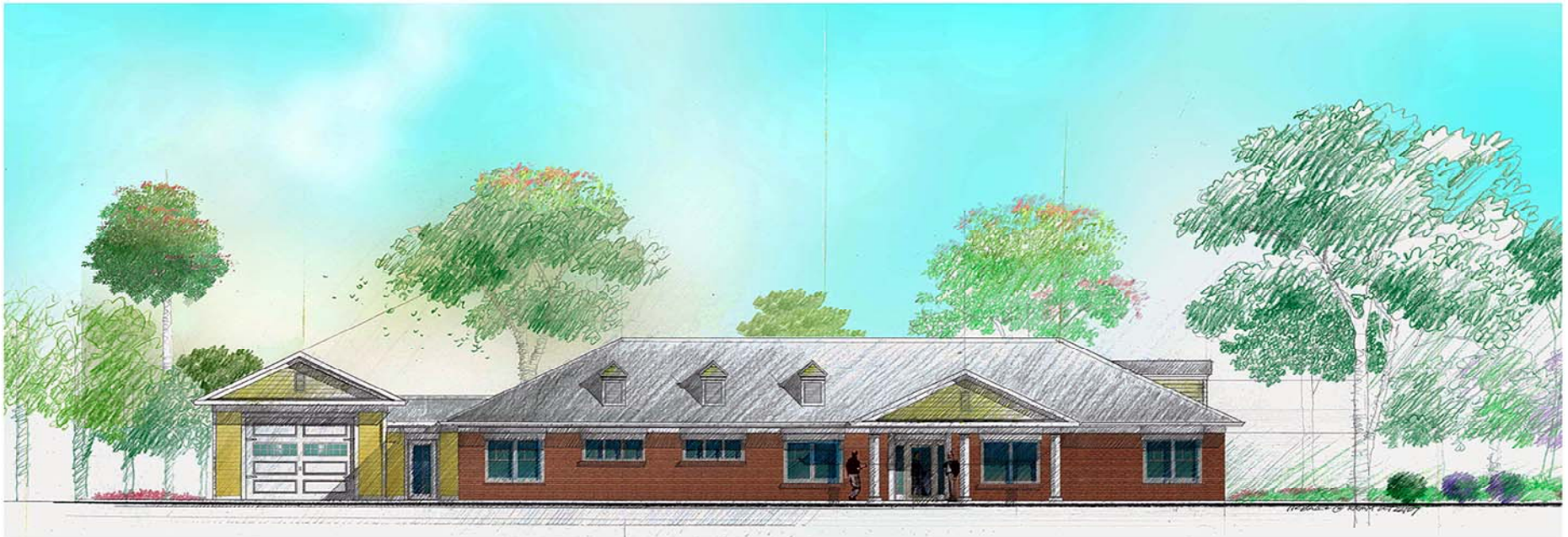


- 1: Administration
- 2: Food Service/Supply
- 3: Vocational Training
- 4: Physical Education
- C1: 4 Residence Cottages
- C2: 4 Residences Cottages
- C3: 4 Residences Cottages
- C4: 4 Residences Cottages
- C5: 4 Residences Cottages
- 28: Residence
- 29: Program/Training

# Site Plan



# Exterior Elevations



## ELEVATION - 5 BEDROOM BASE

Southeastern Virginia Training Center

# Exterior Elevations



## ELEVATION - 5 BEDROOM OPTION 1

Southeastern Virginia Training Center

# Exterior Elevations



## ELEVATION - 5 BEDROOM OPTION 2

Southeastern Virginia Training Center

# Exterior Elevations



## ELEVATION - 5 BEDROOM OPTION 3

Southeastern Virginia Training Center

# Cluster View



## VIEW OF TYPICAL CLUSTER

Southeastern Virginia Training Center

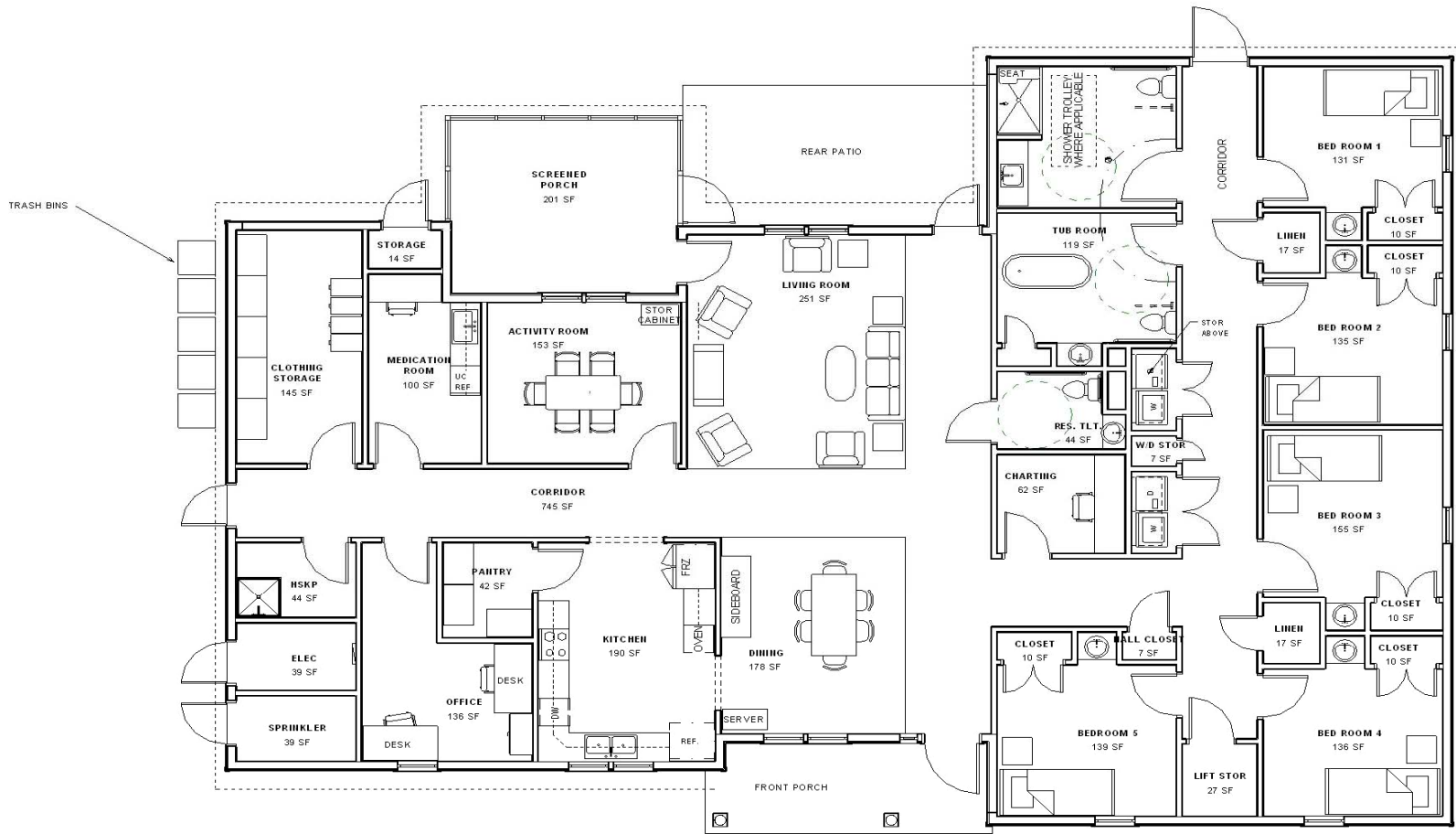


# **SEVTC Advisory Committee**

March 4, 2010

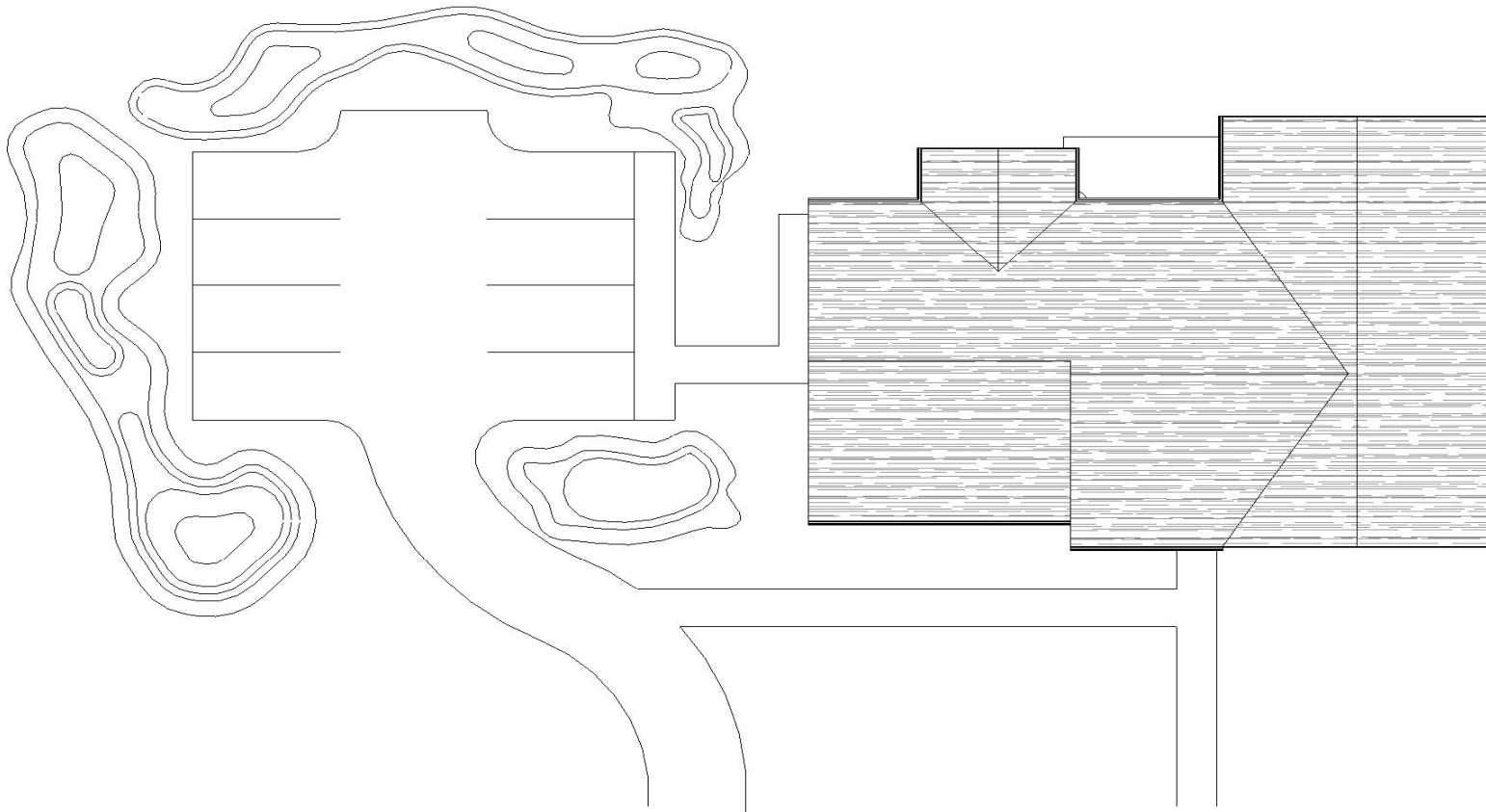
# Community Service Boards

# 5 Bed ICFMR Home



# Community Service Boards

# 5 Bed ICFMR Home



# Community Service Boards

# 5 Bed ICFMR Home



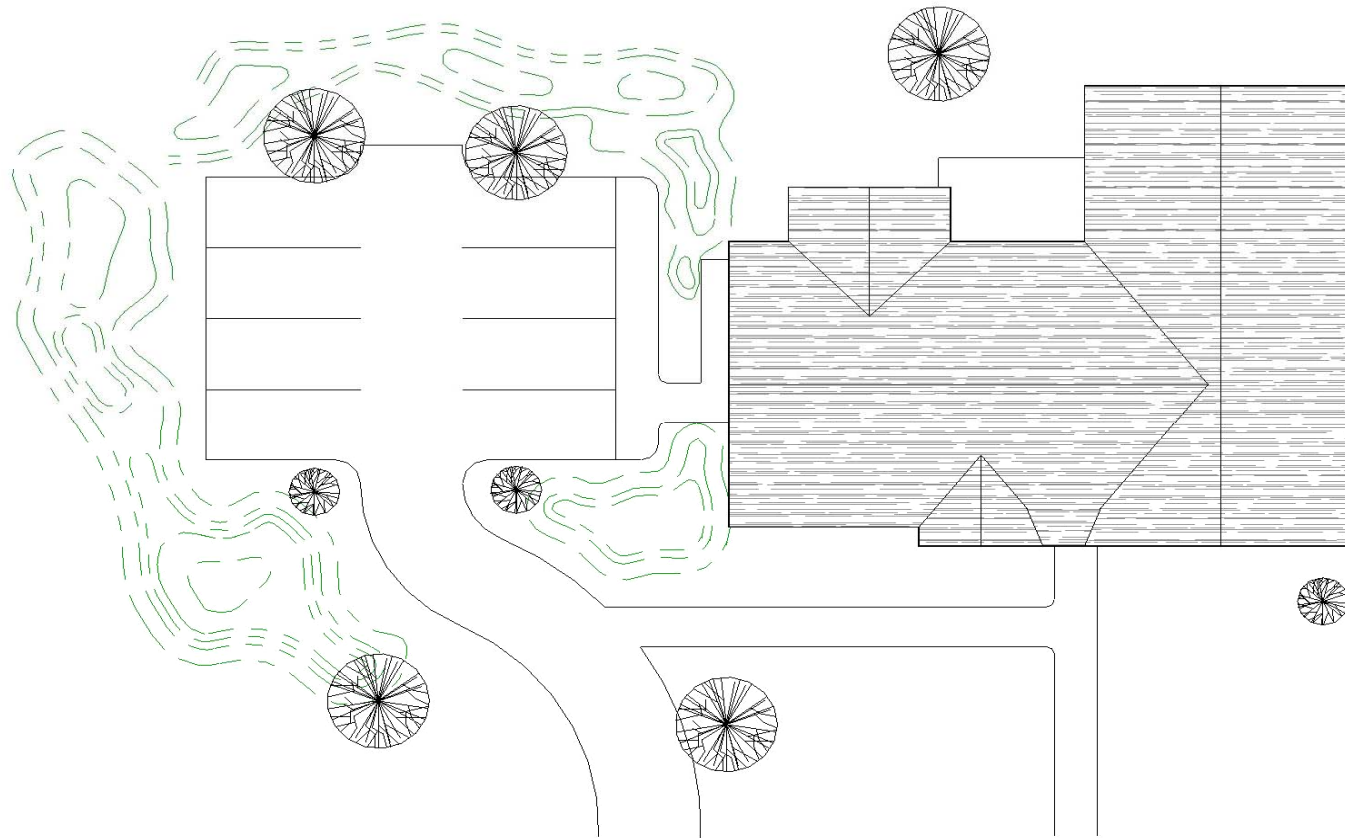
# Community Service Boards

# Waiver Home



# Community Service Boards

# Waiver Home



# Community Service Boards

# Waiver Home



# Community Service Boards

# Property Update

Total	ICF	Waiver	Status
Requirements	12	6	
Identified	11	6	
Need to Identify	1	0	