

2011

Mental

Illness

in Jails

Report

**Compensation Board**

**November 1, 2011**

## Compensation Board Mental Illness in Jails Report (2011)

Authority: Virginia Acts of Assembly, 2011 Session, Chapter 890  
§53.1-83.1, §53.1-84 and §53.1-85, Code of Virginia

Item 67.30K “The Compensation Board shall provide an annual report on the number and diagnoses of inmates with mental illnesses in local and regional jails, the treatment services provided, and expenditures on jail mental health programs. The report shall be prepared in cooperation with the Virginia Sheriffs Association, the Virginia Association of Regional Jails, the Virginia Association of Community Services Boards, and the Department of Behavioral Health and Developmental Services and shall be coordinated with the data submissions required for the annual jail cost report. Copies of this report shall be provided by November 1 of each year to the Governor, Director, Department of Planning and Budget, and the Chairmen of the Senate Finance and House Appropriations Committees.”

Executive Summary: A survey of mental illness in Virginia jails was developed by the Department of Behavioral Health & Development Services (DBHDS) and staff of the Senate Finance Committee and Compensation Board. The Compensation Board posted the mental health survey on its website in August 2011 for completion by Compensation Board funded local and regional jails. With the support of the Virginia Sheriffs’ Association and the Virginia Association of Regional Jails, the Compensation Board received surveys from 67 out of 68 local and regional jails. The Newport News City Jail Farm did not respond to the survey, as they indicated that all mentally ill offenders are held at the Newport News City Jail. Of the 67 surveys received 3 additional jails were excluded from this report. Petersburg City Jail was excluded as they indicated that they do not screen for mental illness. Sussex County Jail was excluded due to absence of data provided regarding the number and diagnoses of mentally ill inmates and treatment expenditures, as a result of current staffing issues in their medical department. Prince William-Manassas Adult Detention Center was excluded, with the exception of FY11 treatment expenditure analysis, due to the absence of data provided regarding the number and diagnoses of mentally ill inmates.

The goal of the survey was to provide information to the Virginia General Assembly, the Compensation Board and the DBHDS regarding jail resource needs for appropriately managing inmates with mental illness. Survey questions directed jail personnel to report data as reflected for the month of July 2011, or for FY2011.

The data provided in this report is reflective only of local and state responsible inmates housed in local and regional jails and does not include federal inmates or contract inmates from other states. The data in this report is as reported to the Compensation Board by the local and regional jails in their 2011 mental health survey, submitted as of August 26, 2011. With the exclusion of Newport News City Jail Farm, Petersburg City Jail, Sussex County Jail, and Prince William-Manassas Adult Detention Center data from **64** out of **68** local and regional jails was used in this report, with the exception of the section dedicated to mental health treatment expenditures. Prince William-Manassas Adult Detention Center data was included in the analysis of mental health treatment expenditures.

The Compensation Board provided a mental illness survey for completion by all local and regional jails requesting statistical information for the month of July, 2011, such as screening and assessment, diagnoses, housing, and most serious offense type of mentally ill inmates. The survey also collects data regarding inmates' access to mental health programs and assistance in the facility, including medication and treatment. In addition, the survey is used to determine the providers of screening/assessment and treatment in each facility, whether they are private mental health professionals, Community Services Board (CSB) staff, or jail staff. Jails also reported their method of housing data regarding the mentally ill population and the amount of mental health and/or Crisis Intervention Training provided to the jail staff, if any. Finally, jails were asked to provide the fiscal year cost of all mental health services and medications. Data gleaned from surveys of **64** out of **68** local and regional jails is included in this report.

### Population & Demographics in Jails

Based upon LIDS data for the month of July 2011 there was an Average Daily Population (ADP) of **7,289** State Responsible (SR), **17,904** Local Responsible (LR) inmates, and **400** ordinance violators confined in local and regional jails in the Commonwealth of Virginia, (**4** jails excluded from this report). A Local Responsible Inmate (LR) is any person arrested on a state warrant and incarcerated in a local correctional facility prior to trial, any person convicted of a misdemeanor offense and sentenced to a term in a local correctional facility, any person convicted of a felony offense on or *after* January 1, 1995 and given an effective sentence of (i) twelve months or less or (ii) less than one year, or any person convicted of one or more felony offenses committed *before* January 1, 1995, and sentenced to less than two years. A State Responsible Inmate (SR) is any person convicted of one or more felony offenses and (a) the sum of consecutive effective sentences for felonies, committed on or after January 1, 1995, is (i) more than twelve months or (ii) one year or more, or (b) the sum of consecutive effective sentences for felonies, committed before January 1, 1995, is more than two years. Unlike SR and LR offenders, who have been arrested on a state warrant, offenders held for ordinance violations have been arrested on a local warrant, having been charged with an offense specific to that locality, which may or may not also appear in the Code of Virginia. Information provided in this report does not include inmates held for any federal or out-of-state authority.

Of these **25,593** inmates, **30.86%** were Pre-Trial and **69.14%** were Post-Conviction. Pre-trial refers to inmates held in a local or regional jail awaiting trial. Post-Conviction refers to inmates who have been found guilty of one or more criminal charges, with or without additional pending charges, and are serving sentence in the jail or awaiting transfer to a Department of Corrections (DOC) facility. The difference in conviction status of mentally ill inmates from 2010 to 2011 is negligible (2010 Pre-Trial 30%, Post-Conviction 70%).

Of these **25,593** inmates, **11.97%** were Female and **88.03%** were Male. Of the Female ADP (**3,064**), **59.85%** were reported in the survey as having a mental illness, a 17.9% increase from 2010. Of the Male ADP (**22,529**), **20.63%** were reported in the survey as having a mental illness, a 4.93 % increase from 2010. Mental illness is defined as inmates who have been diagnosed with schizophrenia or a delusional disorder, bi-polar or major depressive, mild depression, an anxiety disorder, or any other mental illness as set out by the Diagnostic & Statistical Manual of Mental Disorders (DSM-IV-TR), published by the American Psychiatric Association, or those inmates who are suspected of being mentally ill but have received no formal diagnosis.

## Mental Illness Statistics

Data in this section is as reported for July, 2011.

Jails were asked to indicate the number of inmates in each mental illness category, as shown in Figure 1.

There were a total of **6,481** inmates known or suspected to be mentally ill, 1,614 more than reported in 2010, (2010 4,867). Of these mentally ill inmates, **28.30%** were Female and **71.70%** were Male. **45.55%** were Pretrial and **57.66%** were Post-Conviction.

While an inmate may have multiple diagnoses each inmate is counted only once, in the category of the most serious illness for which they have been diagnosed. Figure 1 reflects the number of mentally ill inmates housed in July, 2011 and the type of disorder.

In addition, **49.59%** of the mentally ill population and **12.56%** of the general population of jails who provided data on the number and diagnoses of inmates with mental illness has been diagnosed as having a serious mental illness. Serious mental illness is defined as a diagnosis of schizophrenia/delusional, bi-polar, or major depressive disorder.

Figure 1: Number & Diagnoses of Inmates with Mental Illness

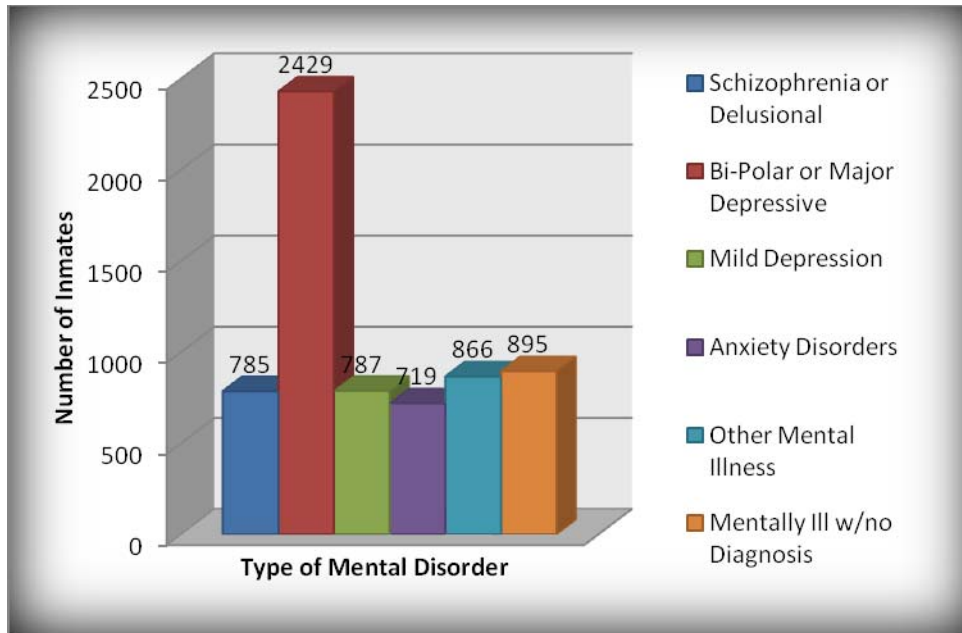


Figure 2: Percentage and Number of Mentally Ill Populations by Region

	Northern Region	Central Region	Western Region	Eastern Region
<b>Num of MI inmates</b>	2773	958	1122	1628
<b>% of Total MI Pop</b>	42.79%	14.78%	17.31%	25.12%
<b>% of MI in Region w/ Serious MI</b>	37.54%	55.64%	48.75%	67.14%
<b>% of MI in Region Pretrial</b>	44.54%	43.42%	35.47%	53.26%
<b>% of MI in Region Post-Con</b>	55.46%	56.58%	64.53%	46.74%
<b>% of Regional ADP w/MI</b>	56.80%	14.37%	21.90%	18.26%

Figure 3 shows the number and percentage that each mental illness represents in both the Female and Male jail populations.

Figure 3: Number & Percentage of M/F Population Diagnoses

	Schizo/Delusional	Bi-Polar/Major Depressive	Mild Depression	Anxiety Disorders	Other Mental Illness	Mentally Ill w/no Diag
<b>Female</b>	151	787	216	303	198	179
<b>Male</b>	634	1642	571	416	668	716
<b>Female</b>	2.50%	13.05%	3.58%	5.02%	3.28%	2.97%
<b>Male</b>	2.81%	7.29%	2.53%	1.85%	2.97%	3.18%

- In addition, there were **157** inmates diagnosed as mentally retarded.
- **25.32%** of the local and regional jail inmate population was known or suspected to be mentally ill (not including those inmates diagnosed as mentally retarded).
- As in 2009 and 2010, a diagnosis of bi-polar/major depressive continues to be by far the most prevalent for both males and females. In this year's survey, a diagnosis of bi-polar/major depressive accounted for **37.48%** of all reported mental illness.

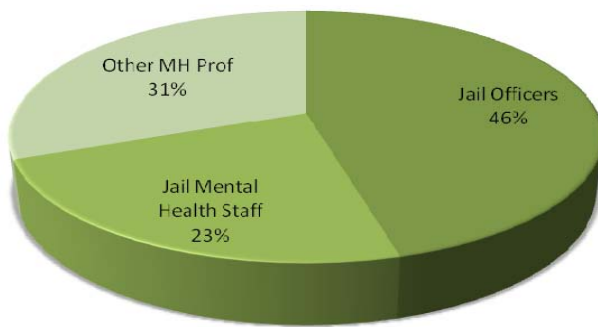
Note: Regional percentages of the total jail adp: Northern-19.08%, Central-26.06%, Western-20.02%, Eastern-34.85%.

## Screenings & Assessments

Data in this section is as reported for July, 2011.

**54** out of **63**, or **85.71 %** of all reporting jails, conduct a mental health screening for all inmates upon admission to the jail. The provider conducting mental health screenings, as well as the screening measure itself, may differ between facilities. The percent of mental health screenings conducted by jail officers has decreased every year since the 2009 report (2009-61%, 2010-55%); therefore the percentage of screenings conducted by mental health professionals is increasing.

Figure 4: Provider of jail mental health screenings.

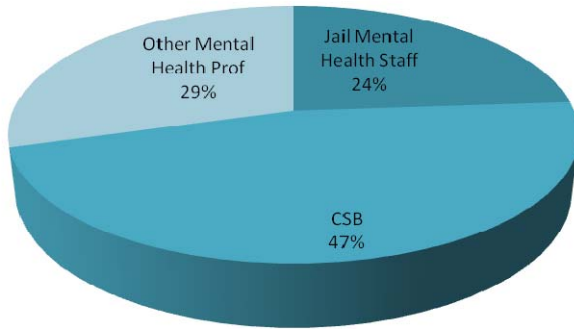


Comprehensive mental health assessments of inmates are also conducted, as follows:

- **34** jails, or **54%**, conduct assessments on all inmates who receive a positive screening for mental illness.
- **24** jails, or **38%**, conduct assessments only on inmates with acute symptoms of mental illness.
- **5** jails, or **8%**, do not conduct assessments at all.

As with initial screenings, the type of individual conducting comprehensive mental health assessments, as well as the type of assessment, may differ between facilities. In some jails, comprehensive assessments may be conducted by any of the mental health providers shown in Figure 5. There has been no significant change in type of provider from previous years' data.

Figure 5: Provider of jail comprehensive mental health assessment.



**Note: Franklin County Jail did not submit responses to the survey questions regarding screenings and assessment**



## Housing

Data in this section is as reflected in July, 2011.

There is no state funded Mental Health Residential Treatment Program operating within jail facilities. The housing of mentally ill inmates may therefore differ from jail to jail. The Department of Behavioral Health and Development Services (DBHDS) sponsors programs in a select number of jails, which provide additional mental health treatment and expanded Crisis Intervention Teams, but these pilot programs do not qualify as state funded residential treatment programs.

- **20** out of **64** reporting jails have Mental Health Units or bed areas separate from the General Population. Within these **20** jails, there are **101** beds for Females and **409** beds for Males.
- Jails reported that **1,731** additional beds would be needed to house all inmates with non-acute mental illness in mental health beds or units.
- Of the **6,481** known mentally ill inmates, **664** were housed in isolation. **17** of **50** jails who housed mentally ill inmates in isolated or segregated cells did not operate a Mental Health Unit.
- **13** jails have noted that they would consider hosting a state-funded Mental Health Residential Treatment Program.

A total of **14** inmates were housed in jails more than 48 hours following the issuance of a court order to a state hospital for psychiatric commitment (Temporary Detention Orders), during the month of July, 2011, a dramatic decrease since 2009 (2009-55, 2010-23).

## Mental Health Treatment Services Provided

Mental health treatment services offered, as well as providers of those services, may differ from jail to jail. Some jails may have a full time psychiatrist or general practice physician (MD) to attend to mental health needs and dispense psychotropic meds; other jails may contract with an outside psychiatrist/general practice physician (MD) to provide services on certain days of each month, etc. Nursing staff may also provide mental health treatment.

## Treatment Hours & Providers

As illustrated in Figures 6 through 9, Community Services Boards (CSB) provide a large portion of mental health treatment in jails. The Virginia Code requires that every locality form their own, or partner with other localities to form a Community Services Board (CSB). The purpose of the Community Services Boards is to facilitate community-based mental health and substance abuse services to citizens, as funding allows. CSB's are licensed by DBHDS and work closely with courts, jails, and human service agencies.

The information provided below is for the month of July, 2011.

- A total of **17,738** treatment hours were provided in **57** of **64** jails. This includes treatment by any provider included in Figure 6.
- All data reflected in Figures 6, 7, and 8 are from an ADP of **24,804**.

Figure 6: Average Number of Treatment Hours per Type of Provider

<b>Provider</b>	<b>Average # of MH Trtmt Hrs Provided</b>
Psychiatrists	18.13
Medical Doctors	4.06
Jail Mental Health Staff	66.97
Community Services Board	104.39
Private Contractors	83.61

**29** jails provide followup case management for mentally ill inmates after their release from the jail.

Figure 7: Hours of Treatment Provided

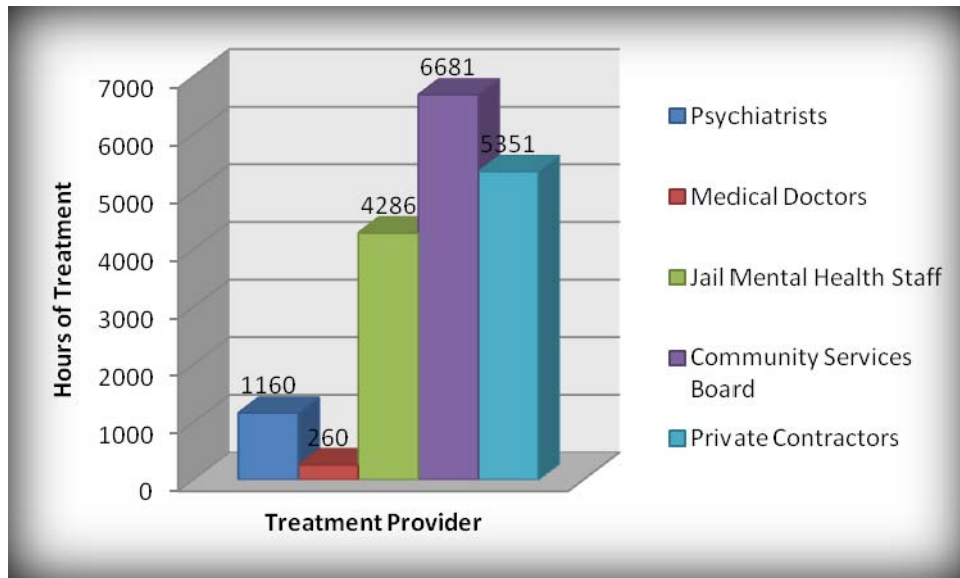
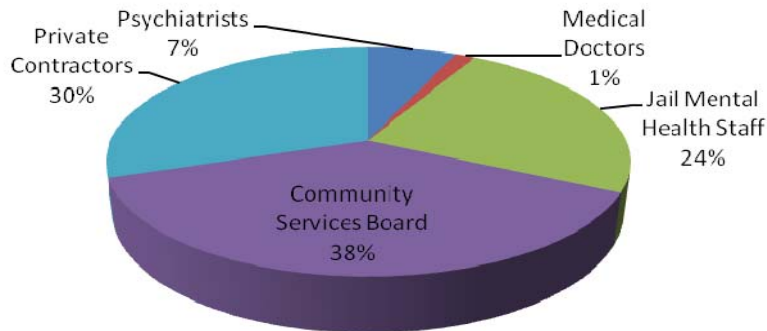


Figure 8: Providers of Treatment



- There was a decrease in the proportion of overall treatment provided by Community Services Boards (CSB), of **5%** from 2010 to 2011 and **23%** from 2009 to 2011. This reduction in services provided by the CSB's could be a result of budget reductions and the absence of codified obligation by the Community Service Boards to provide mental health treatment services to the jails. The impact of the reduction in services by the CSB's seemed to have been absorbed primarily by private contractors, whose percentage of treatment provided increased 8% from 2010 to 2011 and 16% from 2009 to 2011.

Figure 9: Average Number of Treatment Hours per Type of Provider by Region

	Northern Region	Central Region	Western Region	Eastern Region
<b>Psychiatrists</b>	25	16	9	23
<b>Medical Doctors</b>	3	10	3	1
<b>Jail Mental Health Staff</b>	32	4	173	56
<b>Community Services Board</b>	168	145	11	96
<b>Private Contractors</b>	26	181	37	96

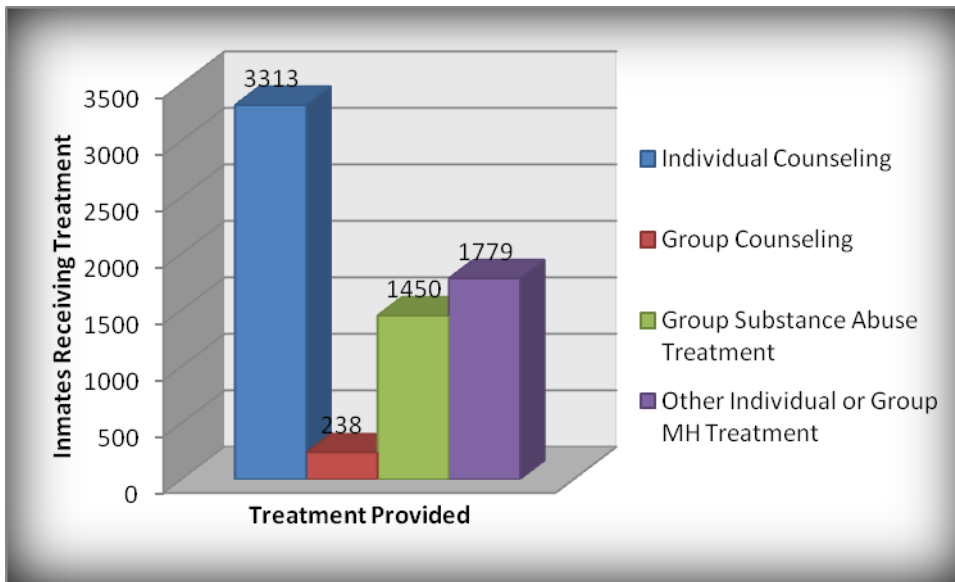
Note: Alleghany County Regional Jail, Brunswick County Jail, Franklin County Jail, Mecklenburg County Jail, Patrick County Jail, Shenandoah County Jail, and Peumansend Creek Regional Jail did not submit responses to the survey question regarding provider of treatment

Treatment Services

The following charts represent types of treatments received by inmates during the month of July, 2011. An inmate may have received multiple types of treatment. Treatment may be provided by any of the entities referenced in Figure 6.

**59** of the **64** reporting jails provided data on the number of inmates receiving treatment services in the categories shown below in their facilities. All inmate numbers reflected in Figures 10, 11, and 12 are from an ADP of **24,736**.

Figure 10: Type of Treatment Provided

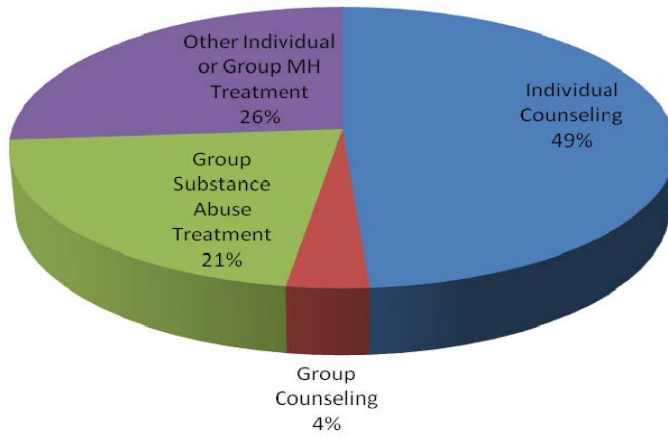


**Not all facilities provide all of the above services**

Figure 11: Hours of Treatment Provided by Region

	Northern Region	Central Region	Western Region	Eastern Region
Individual Counseling	473	1079	953	808
Group Counseling	139	0	0	99
Group Substance Abuse Treatment	294	540	199	417
Other MH Treatment	210	440	109	1020

Figure 12: Type of Service Percentage by Number of Inmates Treated



**Note:** Alleghany County Regional Jail, Franklin County Jail, Rappahannock County Jail, VA Peninsula Regional Jail, and Peumansend Creek Regional Jail did not submit responses to the survey question regarding number of inmates receiving treatment.

## Medication

Some, although not all, inmates with mental illness require the assistance of psychotropic medications. Psychotropic refers to mood altering drugs which affect mental activity, behavior, or perception. Many times these medications are provided and dispensed by the jail. However, as noted in the survey, there are certain medications that some jails do not provide. In certain cases an inmate's medication may be delivered to the jail by a 3<sup>rd</sup> party, such as a physician treating the offender pre-incarceration, or a family member authorized by the jail to bring the necessarily prescribed medication.

Psychotropic medications are broken down into 4 categories: Antipsychotic, Mood Stabilizer/Anticonvulsant, Antidepressant and Antianxiety.

- Antipsychotic medications include drugs such as: Haldol, Zyprexa, Risperdal, Seroquel, Triliafon, Prolixin, Thorazine, Abilify, Geodon, Clozaril
- Mood Stabilizer/Anticonvulsant medications include drugs such as: Depakote, Lithium, Tegretal, Topamax, and Trileptal
- Antidepressant medications include drugs such as: Prozac, Zoloft, Lexapro, Wellbutrin, Paxil, Elavil, Pamelor, and Desyrel
- Antianxiety medications include drugs such as: Ativan, Xanax, Librium and Valium

Data in this section is as reflected in July 2011.

- During this month there were **6,490** prescriptions for psychotropic medications being dispensed in local and regional jails. The number of medications administered may exceed the number of inmates receiving treatment, as an inmate may be taking more than one medication.
- A total of **420** jail inmates with mental illness refused psychotropic medication. This is **6.48%** of the mentally ill population.

Figure 13: Number and Type of Psychotropic Medications Dispensed

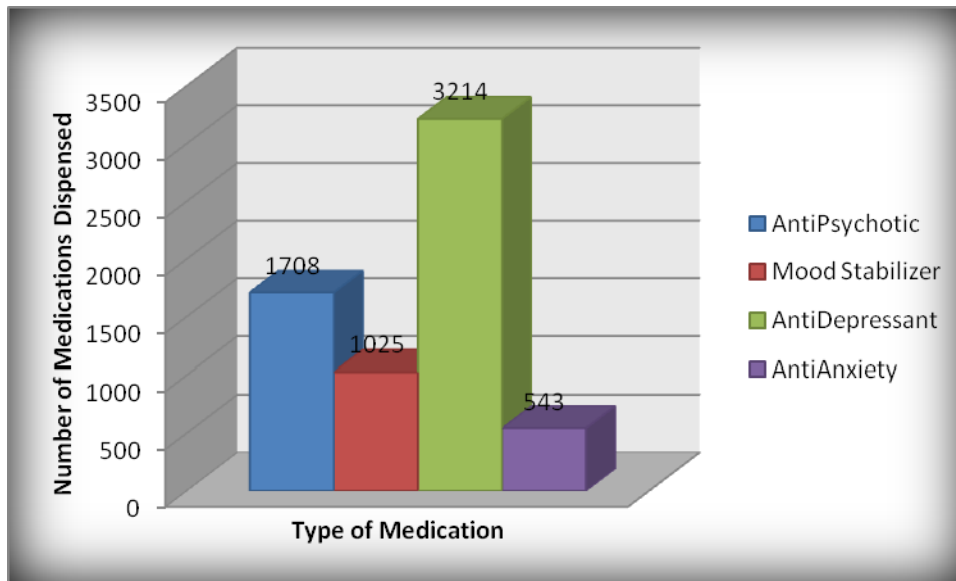
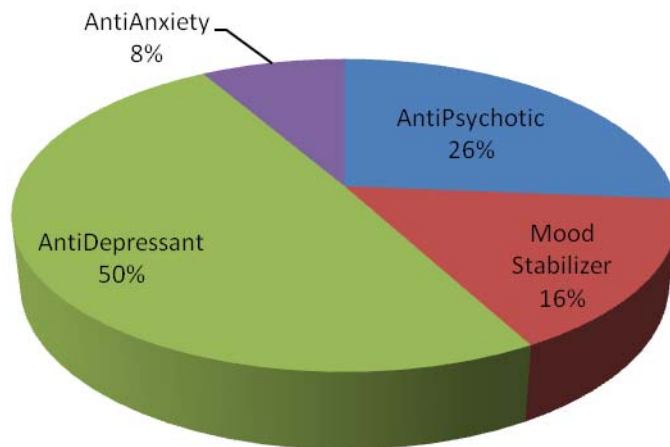


Figure 14: Percentage of Psychotropic Medication Dispensed by Type





## Substance Abuse/Special Education

Data in this section is as reflected in July 2011.

- Of the **6,481** inmates with mental illness, **2,638** had a co-occurring substance use/abuse disorder, or about **40.70%** of the mentally ill jail population. The number of mentally ill with co-occurring substance use/abuse disorder reported has decreased by **33.24%** since 2009 (2009-73.94%, 2010-69.65%).
- Those inmates with co-occurring mental illness and substance use/abuse disorder comprised **10.31%** of the general jail population.
- **5,138** inmates without mental illness were reported to have substance use/abuse disorders, representing about **20.08%** of the jail population.
- As illustrated earlier in Figure 9, **21%** of all inmates receiving jail provided treatment services are receiving group substance abuse treatment. This is a 10% decrease from 2010.

Federal regulations mandate that all correctional facilities provide access to Special Education for inmates. During the month of July, 2011, **202** inmates were receiving Special Education.

## Mental Illness & Offense Type

For each inmate identified as mentally ill, jails were asked to note the most serious offense type on which the offender was held during the month of July, 2011. The following are the offense types, listed in order of severity: Felony-Violent, Felony-Drug, Felony-Nonviolent, Misdemeanor-Violent, Misdemeanor-Drug, Misdemeanor-Nonviolent. Most serious offense classification is based on the most serious offense with which an inmate is currently charged, and not necessarily of which the inmate is ultimately convicted.

Of the **6,481** inmates with mental illness, jails reported Most Serious Offense Type for **77.52%**, or **5,024** of them. Of the inmates for whom Most Serious Offense Type was reported, **76.95%** had Felony Offense(s), **20.96%** were held on Misdemeanor Offense(s) and **2.09%** were held on Ordinance Offense(s).

Figure 15: Most Serious Offense Type

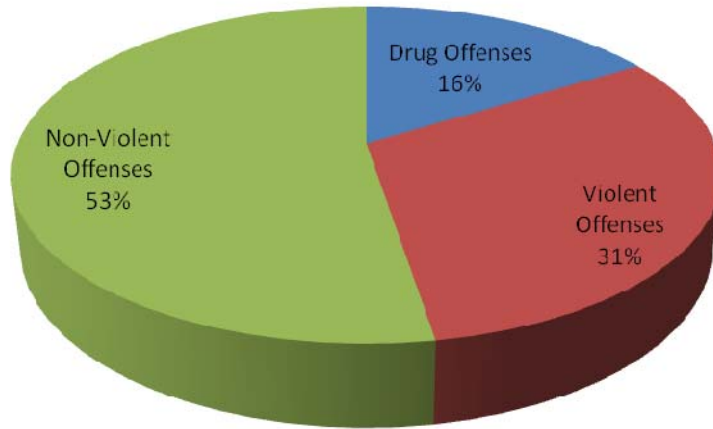


Figure 16 illustrates the percentage each offense comprises of each diagnosis.

Figure 16: Mental Illness Categories & Offense Type

	Felony Violent	Felony Drug	Felony Non-Violent	Mis Violent	Mis Drug	Mis Non-Violent	Ordinance
Schizophrenia/Delusional	24.14%	7.89%	22.38%	3.81%	28.69%	11.70%	1.39%
Bi-Polar/Major Depressive	27.70%	14.55%	39.79%	3.56%	0.70%	11.94%	1.76%
Mild Depression	21.51%	14.62%	43.70%	3.19%	1.51%	12.60%	2.86%
Anxiety Disorder	21.43%	19.42%	36.83%	2.46%	1.12%	15.18%	3.57%
Other Mental Illness	25.17%	12.59%	39.44%	4.20%	1.96%	15.52%	1.12%
Mentally Ill w/ No Diagnosis	18.54%	9.38%	33.87%	14.19%	2.52%	18.31%	3.20%

Figure 17 illustrates the regional offense type percentage of mentally ill inmates for whom most serious offense type was reported.

Figure 17: Mental Illness and Offense Type Percentage by Region

	Northern Region	Central Region	Western Region	Eastern Region
Felony	70.66%	73.24%	86.34%	79.59%
Misdemeanor	25.70%	25.28%	13.21%	18.51%
Ordinance	3.64%	1.47%	0.45%	1.90%

Figure 18 illustrates the regional crime type percentage of mentally ill inmates for whom most serious offense type was reported.

Figure 18: Mental Illness and Crime Type Percentage by Region

	Northern Region	Central Region	Western Region	Eastern Region
Violent	22.30%	37.87%	28.13%	38.09%
Non-Violent	57.22%	45.92%	54.82%	44.99%
Drug	16.84%	14.74%	16.61%	15.02%

Figure 19: Mental Illness & Offense Type Percentage of Increase/Decrease since 2010

	Felony Violent % Change	Felony Drug % Change	Felony Non-Violent % Change	Mis Violent % Change	Mis Drug % Change	Mis Non-Violent % Change
Schizophrenia/Delusional	-7.65%	-6.68%	-5.27%	-1.32%	26.70%	-7.17%
Bi-Polar/Major Depressive	-2.12%	1.32%	-1.97%	-0.46%	-0.53%	2.00%
Mild Depression	3.97%	2.65%	4.36%	-0.91%	-3.41%	-9.53%
Anxiety Disorder	-1.53%	6.27%	1.34%	-1.30%	-7.86%	-0.48%
Other Mental Illness	-6.08%	-1.47%	3.50%	0.03%	-1.56%	4.45%
Mentally Ill w/ No Diagnosis	-6.40%	2.63%	1.14%	8.74%	-1.38%	-7.92%

**Note:** Accomack County Jail and Virginia Beach City Jail did not submit responses to the survey question regarding most serious diagnosis and offense type. Even jails who did submit data regarding mental illness and offense type not all jails submitted offense type data on all mentally ill inmates.

**Note:** The calculation of Violent, Non-Violent and Drug offenses only include state charges, ordinance violations are not included.

**Note:** There is no comparison of ordinance violations in Figure 19, as this is the first year ordinance violations have been included in the mental illness and offense type section of this report.

## Inmate Aggression

In the month of July, 2011 there were **1,596** documented incidents of inmate aggression (to include physical or sexual assault and/or threats of violence) toward other inmates or jail staff. This is an increase of 1,201 incidents reported since 2010 (2010-391). Of these incidents, **76** inmate perpetrators had been diagnosed as mentally ill, and **39** victims of inmate aggression had been diagnosed as mentally ill.

It is relevant to note that one jail for whom there were 0 incidents reported in previous years has reported 1,172 in 2011. There is a possibility that the standard used by this facility for documenting incidents differs from the other jails. If this jail is removed from the sample for this analysis, the net increase in documented incidents of aggression since 2010 is 78.

## Jail Staff & Maintenance of Mental Health Data

There is an average of **125** staff members per jail, to include deputies as well as civilian personnel. However, depending upon the size of the jail, the number of staff members in the jail ranges from **12** to **500**.

- **43** of **64** reporting jails provide mental health training to each new jail officer/deputy prior to his/her initial assignment to the jail. Of these jails, there is an average of **11.3** hours of mental health training provided per jail officer/deputy. **11** jails provide **20** hours or greater of mental health training per jail officer/deputy prior to initial assignment.
- **28** of **64** reporting jails require jail officers/deputies to complete additional training in mental health topics annually. Of these jails, jail officers/deputies are required to complete an average of **3.7** hours of training in mental health topics each year.
- **31** of **64** reporting jails have jail officers/deputies who have completed Crisis Intervention Team (CIT) training. Of these jails, an average of **22.3** jail officers/deputies in each jail has completed CIT training. **9** jails reported that at least half of the total staff has completed CIT training.

**40** jails indicated that their jail's electronic inmate management system includes mental health screening items. **9** jails indicated that their electronic inmate management system includes inmate psychiatric diagnoses.

## Treatment Expenditures

The following reflects the cost of all mental health treatment, including medications, as reported by the jails for FY11. Some jails provided estimated or pro-rated annual costs; total figures have not been audited. **4** jails did not report cost information for medications, therefore costs reported are from a mentally ill population of **6,373**. **11** jails did not report the cost of mental health services, excluding medications, therefore costs reported are from a mentally ill population of **6,201**.

- The total reported cost of all psychotropic medications administered was **\$3.7 million**.
- The total reported cost of mental health services, excluding medication but including medical doctors and nursing, was **\$7.9 million**.
- Total cost of Mental Health Treatment was estimated at approximately **\$11.6 million in FY11**, with **76.82%** of these costs funded by the locality. There has been no significant change in treatment expenditure since 2010, although the proportion of these expenses funded by the locality has increased 10.75%.

**Note:** Appomattox County Jail, Franklin County Jail, Shenandoah County Jail, Roanoke City Jail reported a mentally ill population but did not report the cost of medications. All of the above jails reported that medications were dispensed.

**Note:** Appomattox County Jail, Charlotte County Jail, Franklin County Jail, Henry County Jail, Mecklenburg County Jail, Pittsylvania County Jail, Shenandoah County Jail, Pamunkey Regional Jail, Martinsville City Jail, Newport News City Jail, Roanoke City Jail reported a mentally ill population but did not report the cost of mental health services.

**Note:** Prince William-Manassas Adult Detention Center was included in the number of jails used for this section of the report

## Final Remarks & Future Measures

The Mental Illness in Jails Report has presented statistical analysis on the presence of mental illness in local and regional jails in Virginia since 2008. With each year the scope of the report has broadened to provide data on additional relevant questions posed in the jail mental health survey, as well as expand upon analysis of current questions. The continued goal of the Compensation Board is to create a report that presents as complete and thorough a representation as possible of the presence of mental illness in jails, as well as the impact and financial implications upon the jails. Since the initial Mental Illness in Jails Report, the range of data analysis has expanded to document not only the number of mentally ill inmates but also conviction and offense information, as well as differences between the mentally ill population by sex and region. The Compensation Board continues to maintain the validity and reliability of the data used in this report to the best extent possible with a self-report measure. The stability of survey questions and annual expectation of and preparation for the survey by the jails will help to increase and maintain report accuracy.

Sheriffs and Jail Superintendents were notified in June, 2011 of survey deadlines and instructions, and were directed to an advanced copy of the mental health survey posted to the Compensation Board website. These early communications allowed jail staff to record July, 2011 data during the month of July, providing more time to gather data and shortening actual survey submittal time once the live survey was posted.

Several updates were made to the jail mental health survey for 2011. Jails are now asked not only to report their inmates with mental illness by sex but also by conviction status (pretrial/post conviction). Inmates with ordinance violations, which had been excluded from the survey in previous years, have now been included in the Average Daily Population, as well as in the survey question regarding mental illness diagnosis and most serious offense. Jails are also now asked whether or not they provide follow-up case management services to mentally ill inmates once they are released from the jail. In addition, numerous operational definitions for certain survey terms provided by the Department of Behavioral Health and Developmental Services (DBHDS) were included at the end of the survey.

An update was also made to the Local Inmate Data System (LIDS) to increase the ease of calculation of inmate days for each mental illness diagnosis.

Data in this report continues to be utilized by DBHDS, along with the Senate Finance Committee, for research, as well as to assist in the development of funding needs analysis for jail mental health treatment, jail diversion programs, expansion of Crisis Intervention Teams and post-confinement follow-up care. The mental illness report is also in continued use for knowledge and research purposes related to the jail mental health cohort sites, which involve the partnership of eighteen local and regional jails with local Community Service Boards.

The Compensation Board, with input and assistance from DBHDS, the Virginia Sheriffs' Association and the Virginia Association of Regional Jails, and staff of the Senate Finance Committee will continue to review the survey instrument on an annual basis and make improvements and updates as needed.

Further details of data gleaned from the 2011 mental illness survey and summarized in this report, including the survey instrument developed by DBHDS, staff of the Senate Finance Committee and the Compensation Board, and organization of jail regions, are available in the appendices of this document.

## APPENDICES

Appendix A: 2011 Virginia Local & Regional Jail Survey: Assessment and Treatment of Inmates with Mental Illness

Appendix B: Jail Regions

Appendix C: Number & Diagnoses of Inmate Mental Illness in Jails

Appendix D: Most Serious Offense of Inmates with Mental Illness in Jails

Appendix E: Hours of Mental Health Treatment Services Provided

Appendix F: Type of Mental Health Treatment Services Provided

Appendix G: Mental Health Medication Dispensed

Appendix H: Mental Health Treatment Expenditures

Appendix I: Incidents of Inmate Aggression



# Appendix A: 2011 Local and Regional Jail Survey: Assessment and Treatment of Inmates with Mental Illness

## Virginia Local and Regional Jails Survey: Assessment and Treatment of Inmates with Mental Illness

**\*\*Please do not attempt to complete this survey before August 1, 2011.\*\***

*The Virginia Sheriffs' Association and the Virginia Association of Regional Jails have reviewed this survey, and encourage their members to respond. Our goal is to provide information to the Compensation Board, the Virginia General Assembly, and the Dept. of Behavioral Health and Developmental Services (DBHDS), regarding jail resource needs for appropriately identifying and managing inmates with mental illness.*

*Definitions for some of the terms are provided at the end of this survey.*

**Please provide the data for your jail by August 8, 2011.** *If LIDS queries are needed to assist in the completion of this survey please be sure your July Financials have been certified and approved. Thank you for completing this survey.*

*(Please be sure not to use commas in any numeric field)*

Name of Jail/ADC:

Address:  City:  State:

Zip:

Phone:

Fax:

Email address:

Sheriff/Chief Administrator:

Name of contact person completing survey:

Phone number of contact person:

Email address for contact person:

1. The total ADP of the jail (**except federal and out-of-state contract**) for July 2011 was  inmates. Of the jail's July 2011 ADP  were female and  were male.

2. Please indicate below the ADP of inmates from each category that are included in Question 1 above:

- State responsible
- Local responsible
- Ordinance Violators

Total  (should match total ADP in Question 1)

3. Please indicate below the ADP of inmates from each category that are included in Question 1 above:

- Pre-trial
- Post-conviction

Total  (should match total ADP in Question 1)

4. The number of inmates charged with public intoxication housed in the jail during the month of July, 2011 was .

5. Jail inmates with Intellectual Disability (mental retardation): There were  inmates with intellectual disability in the jail during the month of July 2011.

6. Jail inmates with Substance Use/Abuse Disorders: There were  inmates with Substance Abuse Disorders only, with no identified mental illness, in the jail during the month of July 2011.
7. Special Education Jail Inmates. There were  inmates receiving special education during the month of July 2011.
8. Please indicate the number of inmates with mental illness in each of the categories below. **Please count each inmate only once for this item (unduplicated counts), counting only the most serious or prominent diagnosis for that inmate. (Do not include federal or out-of-state contract inmates.)** Be sure to indicate the total number of inmate days for each category. A pretrial jail roster to assist in separating pretrial from post conviction inmates is available from your LIDS Technician, as well as data on the number of inmate days. For total inmate day data be sure to provide your LIDS Technician with the name and SSN of each inmate.

Mental Illness Category	Females (Pretrial) in jail in July 2011	Females (PostConviction) in jail in July 2011	Males (Pretrial) in jail in July 2011	Males (PostConviction) in jail in July 2011	Total Inmate Days
Inmates with Schizophrenia, Schizoaffective Disorder or Delusional Disorder	<input type="text"/>	<input type="text"/>	<input type="text"/>	<input type="text"/>	<input type="text"/>
Inmates with Bipolar Disorder or Major Depressive Disorder	<input type="text"/>	<input type="text"/>	<input type="text"/>	<input type="text"/>	<input type="text"/>
Inmates with Dysthymic Disorder (mild depression)	<input type="text"/>	<input type="text"/>	<input type="text"/>	<input type="text"/>	<input type="text"/>
Inmates with Anxiety Disorder	<input type="text"/>	<input type="text"/>	<input type="text"/>	<input type="text"/>	<input type="text"/>
Inmates with other mental illness diagnosis	<input type="text"/>	<input type="text"/>	<input type="text"/>	<input type="text"/>	<input type="text"/>
Inmates believed by history, behavior or other indicators to be mentally ill, for whom no clinical diagnosis is available	<input type="text"/>	<input type="text"/>	<input type="text"/>	<input type="text"/>	<input type="text"/>
<b>Total number of inmates with a mental illness in this jail during the month of July 2011</b>	<input type="text"/>	<input type="text"/>	<input type="text"/>	<input type="text"/>	<input type="text"/>

9. Please indicate the offense type of the mentally ill inmates in each category. Report the inmates' offense type using their **most serious offense, for current confinement.**

Mental Illness Category	Ord Viol	Mis Nonviolent	Mis Violent	Mis Drug	Felony Nonviolent	Felony Violent	Felony Drug
Inmates with Schizophrenia, Schizoaffective Disorder or Delusional Disorder	<input type="text"/>	<input type="text"/>	<input type="text"/>	<input type="text"/>	<input type="text"/>	<input type="text"/>	<input type="text"/>
Inmates with Bipolar Disorder or Major Depressive Disorder	<input type="text"/>	<input type="text"/>	<input type="text"/>	<input type="text"/>	<input type="text"/>	<input type="text"/>	<input type="text"/>
Inmates with Dysthymic Disorder (mild depression)	<input type="text"/>	<input type="text"/>	<input type="text"/>	<input type="text"/>	<input type="text"/>	<input type="text"/>	<input type="text"/>
Inmates with Anxiety Disorder	<input type="text"/>	<input type="text"/>	<input type="text"/>	<input type="text"/>	<input type="text"/>	<input type="text"/>	<input type="text"/>
Inmates with other mental illness diagnosis	<input type="text"/>	<input type="text"/>	<input type="text"/>	<input type="text"/>	<input type="text"/>	<input type="text"/>	<input type="text"/>
Inmates believed by history, behavior, or other indicators to be mentally ill, for whom no clinical diagnosis is available	<input type="text"/>	<input type="text"/>	<input type="text"/>	<input type="text"/>	<input type="text"/>	<input type="text"/>	<input type="text"/>
<b>Total number of inmates with a mental illness in this jail</b>	<input type="text"/>	<input type="text"/>	<input type="text"/>	<input type="text"/>	<input type="text"/>	<input type="text"/>	<input type="text"/>

during the month of July 2010							
----------------------------------	--	--	--	--	--	--	--

10. During the month of July 2011, there were a total of  inmates with co-occurring mental illness and substance abuse disorder in the jail.
11. A total of  jail inmates with mental illness were housed in medical isolation cells, or other segregation cells in the jail during the month of July 2011 and spent a total of  days in isolation/segregation. (This question refers to inmates housed in segregation solely due to their mental health status, not inmates who are housed in isolation as punishment for misconduct who also just happen to have a mental illness.)
12. Does your jail have one or more mental health housing units or bed areas that are physically separated from the general population and distinct from other medical bed units?
- Yes
  - No
13. If your jail has a mental health unit or bed area, indicate the number of mental health treatment beds in that area:
- Total beds for male inmates with mental illness
  - Total beds for female inmates with mental illness
  - N/A
14. A total of  mental health beds would be needed at this jail during the month of July 2011, to house all inmates with mental illness in mental health beds or units. **(This number should include all inmates identified in Question 13).**
15. Does your jail conduct a mental health screening upon admission, in addition to standard booking questions, for some or all inmates?
- (Check the item that applies to your jail.)
- All new admissions are screened for mental illness.
  - Some new admissions are screened for mental illness.
- (Estimated percentage of inmates screened)  %
- No, our jail does not screen for mental illness on admission.
16. Jail mental health screenings are conducted by: **Check all that apply**
- Jail Officers
  - Jail MH Staff
  - Other MH professional
17. Does the jail use a validated mental health screening instrument, in addition to standard booking questions, with all inmates?
- Yes
  - No
- 18a. If so, what is the screening instrument used?
- Brief Jail MH Screen
  - Jail Admission Screening Assessment Test (JASAT)
  - Other validated jail MH screening instrument:
- 18b. Name of Instrument:

18c. Are there any other methods of screening for Mental Health issues in your jail? If so, please describe.

19. Indicate whether or not inmates suspected of having a mental illness receive a professional mental health assessment, following screening, or when needed. (check one)
- All inmates with a positive screening are referred for comprehensive assessment.
  - Comprehensive assessments are only conducted when inmates have acute symptoms of mental illness.
  - Comprehensive assessments are not conducted at this facility.

20. Professional mental health assessments of jail inmates are conducted by: (please mark all that apply.)
- Jail licensed MH/medical staff
  - Private, contract MDs or other MH professionals
  - CSB staff

21. A total of  inmates remained housed at this jail for more than 48 hours, following the issuance of a court order to a state hospital for psychiatric commitment (Temporary Detention Orders) during the month of July 2011.

22. Please indicate the CSB/BHA that provides MH prescreening services for psychiatric commitment (Temporary Detention Orders) for this jail.
- The CSB/BHA that serves the county/city where our jail is located provides prescreening services for jail inmates. Name of CSB/BHA:
  - Both the CSB/BHA that serves the county/city where our jail is located and other CSB's in the region that is served by our jail provide MH prescreening for psychiatric commitment

23. CSB prescreenings for psychiatric commitment (Temporary Detention Orders) for this jail are done via video:
- Always
  - Sometimes
  - Never

24. If your jail has a consulting or staff psychiatrist (MD), indicate the number of hours of psychiatrist consultation time provided at your jail, during the month of July 2011. A total of  hours of psychiatrist time were provided during the month of July 2011.

If your jail has a consulting or staff psychiatrist (MD) please provide their name, even if no services were provided during the month of July.

Psychiatrist's name(s) or group  
name

25. If the jail has a general practice, or staff MD, please enter the total number of hours of that MD's time devoted to the provision of mental health treatment (medication prescribing and monitoring) for the month of July 2011. A total of  hours of general MD time were devoted to mental health treatment during the month of July 2011.

If your jail has a general practice (MD) please provide their name, even if no services were provided during the month of July.

26. What percentage of your jail's general or psychiatric MD consultations are provided by a remote video (MD) consultant:
- The jail does not use remote video MD services for mental health assessments and/or treatment.
  - The jail uses remote video MD services for less than 50% of mental health assessments and/or treatment
  - Yes, the jail uses remote video MD services for more than 50% of mental health assessments and/or treatment.
27. Does the jail provide any follow up case management or discharge planning services for inmates with mental illness released from your jail?
- Yes
  - No
28. Jail Medication Formulary: Section 53.1-126 of the *Code of Virginia* requires that sheriffs and regional jail superintendents "...purchase at prices as low as reasonably possible all foodstuffs... and medicine as may be necessary" for the care of the inmates in their jails. Is your jail's purchase of psychotropic medication limited by Section 53.1-126?
- Yes
  - No
29. The jail's formulary is set by:
- a. Contract general medical services provider (Name of contractor providing medication)
  - b. Special contract with local or national pharmacy (Name of local or national pharmacy)
  - c. Other
30. List the numbers of inmates who received each type of psychotropic medication treatment at your jail during the month of July 2011:

**If an inmate received medication from more than one category, please count that inmate in each relevant category.** Some inmates receive treatment with more than one type of medication; the number of medications administered in July may exceed the number of inmates receiving treatment.  
**Please count an inmate for each type of antipsychotic or mood stabilizer medication he or she receives, and count only once for all types of antidepressant or antianxiety medication, even if the inmate received more than one type of antidepressant or antianxiety medication.**

Medication Categories	Total number of Jail Inmates receiving each medication for treatment of mental illness	
<b>I. Antipsychotic medications</b>	<b>Total number of inmates treated with each brand or type of medication</b>	<b>Please place an X in this column if the jail does not provide this medication</b>
Haldol/haloperidol	<input style="width: 50px; height: 20px;" type="text"/>	<input style="width: 20px; height: 20px;" type="checkbox"/>

Zyprexa/olanzapine			
Risperdal/risperidone			
Seroquel/quetiapine			
Triliafon/perphenazine			
Prolixin/fluphenazine			
Thorazine/chlorpromazine			
Abilify/aripiprazole			
Geodon/ziprasidone			
Clozaril/clozapine			
Other antipsychotic medication(s)			
<b>II. Mood Stabilizer/Anticonvulsant medications for major Mood Disorder</b>	<b>Total number of inmates treated with each medication brand/type</b>	<b>Please place an X in this column if the jail does not provide this medication</b>	
Depakote/Depakene/valproic acid			
Lithobid/lithium carbonate			
Tegretal/carbamazepine			
Topamax/topiramate			
Trileptal			
Other mood disorder medication(s)			
<b>III. Antidepressant medications</b>	<b>Total number of inmates treated with this category of medication</b>	<b>Please place an X in this column if the jail does not provide this medication</b>	
(Examples: Prozac/fluoxetine, Zoloft/sertraline, Lexapro, escitalopram, Wellbutrin/bupropion, Paxil/paroxetine, Elavil, amitriptyline, Pamelor/nortriptyline, Desyrel/trazodone, etc.)			
<b>IV. Antianxiety medications</b> (Examples: Ativan/lorazepam, Xanax/alprazolam, Librium/chlordiazepoxide, Valium/diazepam, etc.)			

31. A total of  jail inmates with mental illness refused prescribed psychotropic medication treatment during the month of July 2011.

**Questions 32 through 34 should be answered using data from the entire Fiscal Year 2011**

32. **Total cost for all psychotropic medications administered at your jail during Fiscal Year 2011:**

\$

(Check one:  estimated cost;  actual, prorated cost)

33. **Total cost for all mental health services (excluding medications, but including MDs and nursing) provided by the jail during Fiscal Year 2011:** \$

(Check one:  estimated cost;  actual, prorated cost)

34. Indicate the amount of **funding from each of the sources below** for the amounts listed in questions 32 and 33:

- Commonwealth of Virginia (state) Funds: \$
- Federal funds: \$
- Local funds: \$
- Other funds: \$
- Total funds: \$  (Should equal the sum of questions 32 & 33)

(Check one:  funding sources are estimated  funding sources are actual)

35. Does, or would the jail dispense psychotropic medications provided free of charge by the CSBs, DBHDS, or private provider, when the jail's MD has approved the medication for a particular inmate?

- Yes we currently accept such medications, under the proper circumstances
- Yes, we would accept such medications under the proper circumstances
- No, we do not currently accept such medications
- No, we would not consider accepting such medications

36. Indicate the numbers of inmates who received each of the following types of mental/behavioral health treatment delivered by all mental health services providers, for the month of July 2011.

Treatment Category	Number Treated	Hours of Treatment Provided
Individual counseling	<input type="text"/>	<input type="text"/>
Group mental health counseling	<input type="text"/>	<input type="text"/>
Group Substance Abuse treatment	<input type="text"/>	<input type="text"/>
Other types of individual or group mental health treatment	<input type="text"/>	<input type="text"/>

37. Please indicate the total number of **hours of mental/behavioral health treatment** provided by each of the following entities during the **month of July 2011**; please **include nursing staff time**, but **do not include the hours of treatment provided by psychiatrists or other MDs in this section**:

Treatment Provider	Number of Treatment Hours
Jail mental health treatment staff (jail employees)	<input type="text"/>
Community Services Board (CSB/BHA) staff (Please include CSB staff assigned full-time to the jail. Not employees of the jail)	<input type="text"/>
Private contractors, including jail medical contractor (e.g., PHS, CMS)	<input type="text"/>
Total number of hours of individual or group mental health counseling provided to inmates at your jail <b>for the month of July 2011</b>	<input type="text"/>

38. Please indicate if your jail/locality would consider hosting a state-funded Mental Health Residential Treatment Program

- Yes, would consider housing a MH Residential Treatment program in the jail or jail complex.
- No, would not support housing a MH Residential Treatment program in the jail or jail complex.

39. Please indicate the number of documented incidents of inmate aggression, (to include physical or sexual assault and/or threats of violence). There were  documented incidents of inmate aggression toward other inmates or jail staff during the month of July 2011. Of these incidents  inmate perpetrators had been identified as mentally ill, and  victims of inmate aggression had been identified as mentally ill.

40. Please indicate the mental health data source used by your jail for responding to this survey. (Please mark all that apply).
- Mental Health Module of Jail Management System
  - Other Mental Health Management System
  - Access/Excel Database
  - Paper Forms
  - Other

Additional Comments

41. Please enter the name of the jail's electronic inmate management system

42. Does the jail's electronic inmate management system include MH screening items?

- Yes
- No

43. Does the jail's electronic inmate management system include inmate psychiatric diagnoses?

- Yes
- No

44. Please indicate who is responsible for maintaining mental health data, including but not limited to data used to respond to this survey. (Please mark all that apply).

- Jail licensed MH/medical staff
- CSB staff
- Private, contract MDs or other MH professionals
- Jail Officers

45. The total number of staff employed at this jail is .

46. A total of  hours of mental health training is provided to each new jail officer/deputy, prior to his/her initial assignment to the jail.

47. Jail Officers/Deputies are required to complete  hours of annual training in mental health topics each year.

48. A total of  officers/deputies on the jail staff have completed DCJS Certified 40-Hr Crisis Intervention Team (CIT) training.

Comments: Please include any remarks you wish regarding the management of inmates with mental illness in your jail



If you have any questions about this survey, please phone Kari Bullock at 804-371-4299 (SCB) or email [kari.bullock@scb.virginia.gov](mailto:kari.bullock@scb.virginia.gov). If you should experience any technical difficulties, please contact Anne Wilmoth at 804-225-3307(SCB) or email [anne.wilmoth@scb.virginia.gov](mailto:anne.wilmoth@scb.virginia.gov).

Thank you for your participation in this important work.

**ADP:** Average Daily Population of the jail. This information may be obtained from the LIDS Technician.

**BHA:** Behavioral Health Authority

**Co-occurring disorder:** (dual diagnosis) – a comorbid condition in which an individual is suffering from a mental illness and substance abuse problem.

**CSB:** Community Services Board

**DBHDS:** Department of Behavioral Health and Developmental Services

**Intellectual Disability (mental retardation):** a generalized disorder characterized by significantly impaired cognitive functioning that appears before adulthood.

**MH:** Mental Health

**Mental health screening instrument:** an instrument utilized to make an initial determination of an individual's mental health status, using standardized, validated instrument.

Two common types of screening instruments include, but are not limited to, the Brief Jail Mental Health Screen (BJMHS) and the Jail Admission Screening Assessment Test (JASAT). The standard booking questions related to mental health issues are not considered a screening instrument.

**Mental health services:** any type of service that helps treat or control an individual's mental health disorder(s). These can include but are not limited to individual mental health counseling, group mental health counseling, case management, or other types of individual or group mental health treatment. Many mental health services also address co-occurring substance-related disorders (see definition).

**Most Serious Offense:** Question 10 asks that you report an inmates' offense type using their most serious offense. Offense severity should be ranked as follows: Felony-Violent, Felony-Drug, Felony-Nonviolent, Misdemeanor-Violent, Misdemeanor-Drug, Misdemeanor-Nonviolent

**Professional mental health assessment:** A review of a client's clinical condition conducted by a trained mental health or medical professional which provides an in depth determination of a person's mental health status and treatment needs.

**Psychiatrist:** a psychiatrist is a medical doctor who specializes and is certified in treating mental health disorders.

**Psychotropic medications:** psychotropic medications are commonly used to treat mental health disorders and are those which are capable of affecting the mind, emotions and behavior of an individual.

**Special Education Inmates:** The Federal Government requires jails to provide Special Education to inmates in need of it.

**Substance abuse:** a maladaptive pattern of substance use leading to clinically significant impairment or distress.

**Validated instrument:** questionnaire which has undergone a validation procedure to show that it accurately measures what it aims to do, regardless of who responds, when they respond, and to whom they respond. The Brief Jail Mental Health Screen and the JASAT are examples of validated instruments.

## **Appendix B: Jail Regions**

### **Northern Region**

Albemarle-Charlottesville Regional Jail  
Arlington County Detention Facility  
Culpeper County Jail  
Fairfax Adult Detention Center  
Fauquier County Jail  
Northwestern Regional Jail  
Loudoun County Adult Detention  
Central Virginia Regional Jail  
Page County Jail  
Rappahannock County Jail  
Rockbridge Regional Jail  
Rockingham-Harrisonburg Regional  
Shenandoah County Jail  
Warren County Jail  
Middle River Regional Jail  
Alexandria Detention Center

### **Western Region**

Alleghany County Regional Jail  
Botetourt County Jail  
Franklin County Jail  
Henry County Jail  
Montgomery County Jail  
Patrick County Jail  
Pittsylvania County Jail  
Roanoke-Salem Jail  
Danville City Jail Farm  
New River Regional Jail  
Southwest VA Regional Jail  
Western VA Regional Jail  
Bristol City Jail  
Danville City Jail  
Martinsville City Jail  
Roanoke City Jail

### **Central Region**

Amherst County Jail  
Appomattox County Jail  
Charlotte County Jail  
Chesterfield County Jail  
Dinwiddie County Jail  
Henrico County Jail  
Lancaster Correctional Center  
Mecklenburg County Jail  
Piedmont Regional Jail  
Northern Neck Regional Jail  
Pamunkey Regional Jail  
Blue Ridge Regional Jail Authority  
Peumansend Creek Regional Jail  
Rappahannock Regional Jail  
Richmond City Jail

### **Eastern Region**

Accomack County Jail  
Brunswick County Jail  
Gloucester County Jail  
Middle Peninsula Regional Jail  
Eastern Shore Regional Jail  
Southampton County Jail  
Riverside Regional Jail  
Virginia Peninsula Regional Jail  
Hampton Roads Regional Jail  
Southside Regional Jail  
Chesapeake City Jail  
Western Tidewater Regional Jail  
Hampton Correctional Facility  
Newport News City Jail  
Norfolk City Jail  
Portsmouth City Jail  
Virginia Beach Correctional Center

## Appendix C: Number & Diagnoses of Inmate Mental Illness in Jails

Jail Number	Jail Name	Mental Retardation	Schizophrenia or Delusional Disorder	Bipolar or Major Depressive	Mild Depression	Anxiety Disorders	Other Mental Illness	Mentally Ill w/no Diagnosis	Total Mental Illness Population	Total Pop (SR,LR,OR)
001	Accomack County Jail	0	0	0	0	0	0	0	0	62
003	Albemarle-Charlottesville Reg.	0	13	71	6	0	0	0	90	507
005	Alleghany County Regional Jail	0	2	4	0	1	0	13	20	90
009	Amherst County Jail	0	0	4	1	3	6	0	14	89
011	Appomattox County Jail	0	0	3	1	1	0	0	5	31
013	Arlington County Detention	0	38	102	35	8	20	3	206	438
023	Botetourt County Jail	2	6	5	9	9	4	0	33	102
025	Brunswick County Jail	1	0	7	0	0	0	1	8	61
037	Charlotte County Jail	0	0	0	7	1	0	0	8	68
041	Chesterfield County Jail	0	0	21	0	7	5	0	33	318
047	Culpeper County Jail	0	1	5	7	5	0	0	18	74
053	Dinwiddie County Jail	0	0	0	0	0	0	0	0	59
059	Fairfax Adult Detention Center	0	40	160	0	30	190	160	580	1222
061	Fauquier County Jail	0	5	7	4	16	0	3	35	109
067	Franklin County Jail	0	0	0	0	2	0	0	2	58
069	Northwestern Regional Jail	0	15	76	51	30	32	0	204	544
073	Gloucester County Jail	2	4	5	4	14	0	13	40	72
087	Henrico County Jail	6	25	73	2	6	50	1	157	1156
089	Henry County Jail	2	3	7	7	7	0	1	25	161
103	Lancaster Correctional Center	0	0	2	1	1	0	0	4	25
107	Loudoun County Adult Detention	2	2	302	171	168	109	394	1146	201
117	Mecklenburg County Jail	0	0	0	0	2	0	46	48	126
119	Middle Peninsula Regional	5	7	14	12	1	3	1	38	175
121	Montgomery County Jail	0	2	20	33	18	4	1	78	87
131	Eastern Shore Regional Jail	0	5	4	0	0	1	0	10	81
135	Piedmont Regional Jail	2	2	0	0	0	0	0	2	452
137	Central Virginia Regional Jail	0	3	17	39	2	0	0	61	268
139	Page County Jail	0	2	2	9	5	1	1	20	83
141	Patrick County Jail	1	3	16	7	8	0	11	45	63
143	Pittsylvania County Jail	2	7	4	1	1	1	0	14	125
157	Rappahannock County Jail	0	0	0	0	3	0	2	5	24
161	Roanoke County/Salem Jail	0	2	13	0	8	10	1	34	130

Jail Number	Jail Name	Mental Retardation	Schizophrenia or Delusional Disorder	Bipolar or Major Depressive	Mild Depression	Anxiety Disorders	Other Mental Illness	Mentally Ill w/no Diagnosis	Total Mental Illness Population	Total Pop (SR,LR,OR)
163	Rockbridge Regional Jail	0	2	25	0	1	1	0	29	81
165	Rockingham-Harrisonburg Reg.	0	6	29	3	8	21	4	71	304
171	Shenandoah County Jail	0	2	4	0	0	3	0	9	95
175	Southampton County Jail	0	1	2	5	0	0	1	9	100
187	Warren County Jail	1	3	23	2	6	4	9	47	126
193	Northern Neck Regional Jail	0	13	26	7	10	8	16	80	141
220	Danville City Jail Farm	0	1	1	7	2	0	1	12	168
460	Pamunkey Regional Jail	0	3	20	18	19	2	0	62	338
465	Riverside Regional Jail	5	46	123	1	21	45	5	241	1326
470	Virginia Peninsula Regional	1	7	15	12	6	2	0	42	388
475	Hampton Roads Regional Jail	6	126	161	0	32	29	10	358	879
480	New River Regional Jail	0	1	60	63	18	0	0	142	773
485	Blue Ridge Regional Jail Authority	8	19	77	22	6	8	0	132	1005
490	Peumansend Creek Regional	0	0	0	4	4	2	0	10	297
491	Southside Regional Jail	0	6	12	0	1	6	0	25	201
492	Southwest VA Regional Jail	0	8	240	0	34	0	0	282	1637
493	Middle River Regional Jail	3	3	53	9	13	79	13	170	558
494	Western Virginia Regional Jail	6	9	26	75	31	24	89	254	668
510	Alexandria Detention Center	1	12	18	22	4	10	16	82	246
520	Bristol City Jail	1	1	11	13	0	0	1	26	150
550	Chesapeake City Jail	75	91	124	0	25	0	0	240	1030
590	Danville City Jail	3	19	10	6	8	5	0	48	256
620	Western Tidewater Regional	10	10	14	13	8	0	0	45	470
630	Rappahannock Regional Jail	7	24	49	20	11	80	27	211	1177
650	Hampton Correctional Facility	0	8	9	11	4	0	0	32	378
690	Martinsville City Jail	0	6	5	0	0	4	0	15	114
700	Newport News City Jail	0	15	40	30	20	0	0	105	499
710	Norfolk City Jail	3	41	30	1	1	57	5	135	1347
740	Portsmouth City Jail	0	4	14	2	0	0	0	20	421
760	Richmond City Jail	1	69	103	16	2	2	0	192	1386
770	Roanoke City Jail	0	5	50	18	9	10	0	92	543
810	Virginia Beach Correction. Ctr	1	37	111	0	58	28	46	280	1430
	<b>Total</b>	<b>157</b>	<b>785</b>	<b>2429</b>	<b>787</b>	<b>719</b>	<b>866</b>	<b>895</b>	<b>6481</b>	<b>25593</b>

## Appendix D: Most Serious Offense of Inmates with Mental Illness in Jails

Jail Number	Jail Name	Inmates Whose Most Serious Offense Reported as Felony	Inmates Whose Most Serious Offense Reported as Misdemeanor	Inmates Whose Most Serious Offense Reported as Drug	Inmates Whose Most Serious Offense Reported as Violent	Inmates Whose Most Serious Offense Reported as NonViolent	Total Inmates Reported
001	Accomack County Jail	0	0	0	0	0	0
003	Albemarle-Charlottesville Reg.	77	14	21	32	38	91
005	Alleghany County Regional Jail	18	2	7	1	12	20
009	Amherst County Jail	11	3	2	0	12	14
011	Appomattox County Jail	4	1	0	2	3	5
013	Arlington County Detention Fac	154	68	71	24	127	222
023	Botetourt County Jail	29	4	15	7	11	33
025	Brunswick County Jail	2	6	0	2	6	8
037	Charlotte County Jail	8	0	1	5	2	8
041	Chesterfield County Jail	18	13	5	7	19	31
047	Culpeper County Jail	16	2	7	3	8	18
053	Dinwiddie County Jail	0	0	0	0	0	0
059	Fairfax Adult Detention Center	380	190	70	130	370	570
061	Fauquier County Jail	16	12	16	3	9	28
067	Franklin County Jail	2	0	0	0	2	2
069	Northwestern Regional Jail	121	35	30	38	88	156
073	Gloucester County Jail	29	10	0	12	27	39
087	Henrico County Jail	115	41	12	56	88	156
089	Henry County Jail	18	7	0	6	19	25
103	Lancaster Correctional Center	1	2	0	1	2	3
107	Loudoun County Adult Detention	46	18	11	20	33	64
117	Mecklenburg County Jail	0	4	0	3	1	4
119	Middle Peninsula Regional	29	9	0	17	21	38
121	Montgomery County Jail	35	48	6	20	57	83
131	Eastern Shore Regional Jail	10	0	0	5	5	10
135	Piedmont Regional Jail	1	1	0	1	1	2
137	Central Virginia Regional Jail	51	9	5	34	21	60
139	Page County Jail	17	7	3	4	17	24
141	Patrick County Jail	36	5	7	17	17	41
143	Pittsylvania County Jail	11	1	1	4	7	12
157	Rappahannock County Jail	5	0	2	1	2	5

Jail Number	Jail Name	Inmates Whose Most Serious Offense Reported as Felony	Inmates Whose Most Serious Offense Reported as Misdemeanor	Inmates Whose Most Serious Offense Reported as Drug	Inmates Whose Most Serious Offense Reported as Violent	Inmates Whose Most Serious Offense Reported as NonViolent	Total Inmates Reported
161	Roanoke County/Salem Jail	33	1	4	10	20	34
163	Rockbridge Regional Jail	22	4	3	4	19	26
165	Rockingham-Harrisonburg Reg.	58	12	7	16	47	70
171	Shenandoah County Jail	9	0	0	0	9	9
175	Southampton County Jail	8	1	1	3	5	9
187	Warren County Jail	47	3	3	20	27	50
193	Northern Neck Regional Jail	24	6	3	10	17	30
220	Danville City Jail Farm	10	2	1	2	9	12
460	Pamunkey Regional Jail	51	11	5	22	35	62
465	Riverside Regional Jail	212	29	37	84	120	241
470	Virginia Peninsula Regional	31	1	3	13	16	32
475	Hampton Roads Regional Jail	302	91	88	211	94	393
480	New River Regional Jail	129	13	12	48	82	142
485	Blue Ridge Regional Jail Authority	86	46	27	51	54	132
490	Peumansend Creek Regional	9	1	2	1	7	10
491	Southside Regional Jail	17	8	2	7	16	25
492	Southwest VA Regional Jail	270	6	72	66	138	276
493	Middle River Regional Jail	136	34	29	35	106	170
494	Western Virginia Regional Jail	222	33	34	76	145	255
510	Alexandria Detention Center	49	30	9	16	54	79
520	Bristol City Jail	24	2	14	6	6	26
550	Chesapeake City Jail	261	25	56	86	144	286
590	Danville City Jail	46	2	4	15	29	48
620	Western Tidewater Regional	29	16	0	0	45	45
630	Rappahannock Regional Jail	153	67	46	79	95	220
650	Hampton Correctional Facility	17	14	7	11	13	31
690	Martinsville City Jail	13	1	0	6	8	14
700	Newport News City Jail	17	3	1	9	10	20
710	Norfolk City Jail	68	29	2	33	62	97
740	Portsmouth City Jail	17	2	1	9	9	19
760	Richmond City Jail	165	27	27	96	69	192
770	Roanoke City Jail	71	21	9	31	52	92
810	Virginia Beach Correction. Ctr	0	0	0	0	0	0
	<b>Total</b>	<b>3866</b>	<b>1053</b>	<b>801</b>	<b>1531</b>	<b>2587</b>	<b>4919</b>

## Appendix E: Hours of Mental Health Treatment Services Provided

Jail Number	Jail Name	Hrs of Psychiatric Consultation	Hrs of General Practice MD devoted to MH	Hrs of Trtmt Prov by Jail MH Staff	Hrs of Trtmt Prov by CSB	Hrs of Trtmt Prov by Priv Cont	Total Hrs of MH Trtmt
001	Accomack County Jail	18	0	40	0	0	58
003	Albemarle-Charlottesville Reg.	41	0	168	0	0	209
005	Alleghany County Regional Jail	0	0	0	0	0	0
009	Amherst County Jail	3	0	0	0	2	5
011	Appomattox County Jail	0	0	0	0	0	0
013	Arlington County Detention Fac	206	0	0	108	400	714
023	Botetourt County Jail	0	1	0	12	0	13
025	Brunswick County Jail	0	1	0	0	0	1
037	Charlotte County Jail	0	0	7	4	0	11
041	Chesterfield County Jail	32	10	0	32	0	74
047	Culpeper County Jail	20	0	0	1	0	21
053	Dinwiddie County Jail	0	0	0	0	0	0
059	Fairfax Adult Detention Center	0	0	0	1440	0	1440
061	Fauquier County Jail	4	3	9	4	3	23
067	Franklin County Jail	0	0	0	0	0	0
069	Northwestern Regional Jail	16	9	32	4	14	75
073	Gloucester County Jail	0	2	48	64	0	114
087	Henrico County Jail	120	40	0	848	2232	3240
089	Henry County Jail	0	0	0	6	0	6
103	Lancaster Correctional Center	0	3	15	15	4	37
107	Loudoun County Adult Detention	16	2	0	263	3	284
117	Mecklenburg County Jail	0	0	0	0	0	0
119	Middle Peninsula Regional	10	2	160	320	320	812
121	Montgomery County Jail	4	0	0	16	0	20
131	Eastern Shore Regional Jail	4	0	0	0	0	4
135	Piedmont Regional Jail	40	62	0	0	0	102
137	Central Virginia Regional Jail	0	6	8	2	0	16
139	Page County Jail	2	3	20	8	0	33
141	Patrick County Jail	0	6	0	0	0	6
143	Pittsylvania County Jail	0	0	72	0	0	72
157	Rappahannock County Jail	0	2	2	0	0	4



Jail Number	Jail Name	Hrs of Psychiatric Consultation	Hrs of General Practice MD devoted to MH	Hrs of Trtmt Prov by Jail MH Staff	Hrs of Trtmt Prov by CSB	Hrs of Trtmt Prov by Priv Cont	Total Hrs of MH Trtmt
161	Roanoke County/Salem Jail	31	0	8	92	0	131
163	Rockbridge Regional Jail	0	4	0	4	0	8
165	Rockingham-Harrisonburg Reg.	24	0	0	24	0	48
171	Shenandoah County Jail	0	0	0	0	0	0
175	Southampton County Jail	0	1	3	0	0	4
187	Warren County Jail	1	0	25	14	0	40
193	Northern Neck Regional Jail	7	6	40	160	0	213
220	Danville City Jail Farm	0	3	4	2	0	9
460	Pamunkey Regional Jail	6	2	0	16	0	24
465	Riverside Regional Jail	82	0	560	36	0	678
470	Virginia Peninsula Regional	10	0	0	32	0	42
475	Hampton Roads Regional Jail	73	0	0	0	465	538
480	New River Regional Jail	4	2	0	32	0	38
485	Blue Ridge Regional Jail Authority	14	0	0	16	96	126
490	Peumansend Creek Regional	0	2	0	0	0	2
491	Southside Regional Jail	3	6	0	0	0	9
492	Southwest VA Regional Jail	30	20	2482	0	400	2932
493	Middle River Regional Jail	10	4	240	76	0	330
494	Western Virginia Regional Jail	40	0	202	0	0	242
510	Alexandria Detention Center	59	15	0	743	0	817
520	Bristol City Jail	0	3	5	0	0	8
550	Chesapeake City Jail	83	0	0	120	108	311
590	Danville City Jail	0	2	0	8	2	12
620	Western Tidewater Regional	16	0	0	336	0	352
630	Rappahannock Regional Jail	12	20	0	1000	28	1060
650	Hampton Correctional Facility	4	0	0	0	0	4
690	Martinsville City Jail	3	10	0	13	0	26
700	Newport News City Jail	8	0	0	644	8	660
710	Norfolk City Jail	24	0	0	6	344	374
740	Portsmouth City Jail	0	2	136	0	0	138
760	Richmond City Jail	0	6	0	80	350	436
770	Roanoke City Jail	24	0	0	0	192	216
810	Virginia Beach Correction. Ctr	56	0	0	80	380	516
..	<b>Total</b>	<b>1160</b>	<b>260</b>	<b>4286</b>	<b>6681</b>	<b>5351</b>	<b>17738</b>

## Appendix F: Type of Mental Health Treatment Services Provided

Jail Number	Jail Name	Inmates Receiving Individual Counseling	Inmates Receiving Group Counseling	Inmates Receiving Group Substance Abuse Treatment	Inmates Receiving Other Individual or Group MH Treatment	Total Number of Inmates Receiving Treatment
001	Accomack County Jail	24	0	0	0	24
003	Albemarle-Charlottesville Reg.	0	0	30	0	30
005	Alleghany County Regional Jail	0	0	0	0	0
009	Amherst County Jail	6	0	0	0	6
011	Appomattox County Jail	1	0	0	0	1
013	Arlington County Detention Fac	62	58	73	0	193
023	Botetourt County Jail	0	0	9	0	9
025	Brunswick County Jail	0	0	15	15	30
037	Charlotte County Jail	2	0	0	0	2
041	Chesterfield County Jail	44	0	58	0	102
047	Culpeper County Jail	2	0	0	0	2
053	Dinwiddie County Jail	0	0	0	0	0
059	Fairfax Adult Detention Center	0	0	0	184	184
061	Fauquier County Jail	0	0	6	0	6
067	Franklin County Jail	0	0	0	0	0
069	Northwestern Regional Jail	158	0	0	0	158
073	Gloucester County Jail	6	0	23	0	29
087	Henrico County Jail	459	0	225	0	684
089	Henry County Jail	5	0	0	0	5
103	Lancaster Correctional Center	4	0	6	0	10
107	Loudoun County Adult Detention	48	0	29	26	103
117	Mecklenburg County Jail	2	0	0	0	2
119	Middle Peninsula Regional	98	45	40	50	233
121	Montgomery County Jail	12	0	33	0	45
131	Eastern Shore Regional Jail	5	0	0	0	5
135	Piedmont Regional Jail	56	0	0	0	56
137	Central Virginia Regional Jail	24	0	0	0	24
139	Page County Jail	4	30	30	0	64
141	Patrick County Jail	2	0	0	0	2
143	Pittsylvania County Jail	9	0	23	8	40
157	Rappahannock County Jail	0	0	0	0	0
161	Roanoke County/Salem Jail	5	0	19	0	24
163	Rockbridge Regional Jail	2	0	5	0	7

Jail Number	Jail Name	Inmates Receiving Individual Counseling	Inmates Receiving Group Counseling	Inmates Receiving Group Substance Abuse Treatment	Inmates Receiving Other Individual or Group MH Treatment	Total Number of Inmates Receiving Treatment
165	Rockingham-Harrisonburg Reg.	22	18	44	0	84
171	Shenandoah County Jail	0	23	35	0	58
175	Southampton County Jail	1	0	0	0	1
187	Warren County Jail	2	10	13	0	25
193	Northern Neck Regional Jail	68	0	42	24	134
220	Danville City Jail Farm	1	0	0	0	1
460	Pamunkey Regional Jail	2	0	0	0	2
465	Riverside Regional Jail	0	0	155	201	356
470	Virginia Peninsula Regional	0	0	0	0	0
475	Hampton Roads Regional Jail	1	0	40	0	41
480	New River Regional Jail	39	0	0	0	39
485	Blue Ridge Regional Jail Authority	201	0	25	40	266
490	Peumansend Creek Regional	0	0	0	0	0
491	Southside Regional Jail	19	0	0	29	48
492	Southwest VA Regional Jail	257	0	90	101	448
493	Middle River Regional Jail	55	0	0	0	55
494	Western Virginia Regional Jail	348	0	0	0	348
510	Alexandria Detention Center	94	0	29	0	123
520	Bristol City Jail	8	0	0	0	8
550	Chesapeake City Jail	406	0	27	0	433
590	Danville City Jail	28	0	0	0	28
620	Western Tidewater Regional	78	24	26	0	128
630	Rappahannock Regional Jail	234	0	184	0	418
650	Hampton Correctional Facility	0	0	8	5	13
690	Martinsville City Jail	13	0	0	0	13
700	Newport News City Jail	10	0	30	0	40
710	Norfolk City Jail	1	0	18	403	422
740	Portsmouth City Jail	27	30	35	0	92
760	Richmond City Jail	0	0	0	376	376
770	Roanoke City Jail	226	0	25	0	251
810	Virginia Beach Correction. Ctr	132	0	0	317	449
..	<b>Total</b>	<b>3313</b>	<b>238</b>	<b>1450</b>	<b>1779</b>	<b>6780</b>

## Appendix G: Mental Health Medication Dispensed

Jail Number	Jail Name	Inmates Receiving Anti-Psychotic Meds	Inmates Receiving Mood Stabilizer Meds	Inmates Receiving Anti-Depressant Meds	Inmates Receiving Anti-Anxiety Meds	Total Medications Dispensed	Inmates who Refused Psychotropic Meds
001	Accomack County Jail	10	7	29	0	46	1
003	Albemarle-Charlottesville Reg.	21	11	100	0	132	13
005	Alleghany County Regional Jail	4	5	14	0	23	0
009	Amherst County Jail	3	2	4	1	10	0
011	Appomattox County Jail	2	2	2	2	8	0
013	Arlington County Detention Fac	72	17	99	12	200	16
023	Botetourt County Jail	11	6	19	8	44	1
025	Brunswick County Jail	5	2	2	1	10	1
037	Charlotte County Jail	1	0	6	2	9	0
041	Chesterfield County Jail	14	4	30	4	52	0
047	Culpeper County Jail	12	3	3	2	20	0
053	Dinwiddie County Jail	0	0	0	0	0	0
059	Fairfax Adult Detention Center	67	75	106	8	256	20
061	Fauquier County Jail	32	6	6	2	46	0
067	Franklin County Jail	0	0	0	1	1	0
069	Northwestern Regional Jail	43	59	117	35	254	4
073	Gloucester County Jail	2	0	12	0	14	1
087	Henrico County Jail	42	36	81	41	200	85
089	Henry County Jail	4	5	19	1	29	1
103	Lancaster Correctional Center	0	1	1	1	3	0
107	Loudoun County Adult Detention	20	9	8	0	37	0
117	Mecklenburg County Jail	2	2	14	0	18	0
119	Middle Peninsula Regional	7	12	30	4	53	7
121	Montgomery County Jail	7	4	16	8	35	0
131	Eastern Shore Regional Jail	17	2	3	0	22	1
135	Piedmont Regional Jail	25	15	44	2	86	1
137	Central Virginia Regional Jail	18	5	67	2	92	2
139	Page County Jail	5	6	13	5	29	0
141	Patrick County Jail	14	8	9	8	39	0
143	Pittsylvania County Jail	3	6	9	1	19	0
157	Rappahannock County Jail	2	0	1	2	5	0
161	Roanoke County/Salem Jail	9	10	25	0	44	0

Jail Number	Jail Name	Inmates Receiving Anti-Psychotic Meds	Inmates Receiving Mood Stabilizer Meds	Inmates Receiving Anti-Depressant Meds	Inmates Receiving Anti-Anxiety Meds	Total Medications Dispensed	Inmates who Refused Psychotropic Meds
163	Rockbridge Regional Jail	9	7	12	4	32	1
165	Rockingham-Harrisonburg Reg.	23	38	21	2	84	3
171	Shenandoah County Jail	15	4	5	0	24	0
175	Southampton County Jail	1	1	11	0	13	0
187	Warren County Jail	13	8	0	0	21	2
193	Northern Neck Regional Jail	13	6	5	0	24	8
220	Danville City Jail Farm	2	1	7	1	11	1
460	Pamunkey Regional Jail	9	22	28	2	61	2
465	Riverside Regional Jail	123	82	277	29	511	19
470	Virginia Peninsula Regional	21	10	31	9	71	2
475	Hampton Roads Regional Jail	214	62	240	39	555	0
480	New River Regional Jail	43	13	194	18	268	13
485	Blue Ridge Regional Jail Authority	92	45	163	35	335	18
490	Peumansend Creek Regional	0	0	9	0	9	1
491	Southside Regional Jail	16	4	25	5	50	2
492	Southwest VA Regional Jail	143	67	341	10	561	0
493	Middle River Regional Jail	18	15	90	4	127	4
494	Western Virginia Regional Jail	19	27	99	42	187	39
510	Alexandria Detention Center	27	9	30	10	76	52
520	Bristol City Jail	2	1	15	3	21	1
550	Chesapeake City Jail	92	69	152	97	410	6
590	Danville City Jail	17	13	16	2	48	3
620	Western Tidewater Regional	12	5	14	0	31	0
630	Rappahannock Regional Jail	49	29	86	28	192	41
650	Hampton Correctional Facility	13	4	16	2	35	1
690	Martinsville City Jail	7	2	4	5	18	2
700	Newport News City Jail	21	10	32	0	63	4
710	Norfolk City Jail	43	23	74	2	142	5
740	Portsmouth City Jail	6	5	4	0	15	5
760	Richmond City Jail	78	39	124	9	250	6
770	Roanoke City Jail	23	35	88	4	150	3
810	Virginia Beach Correction. Ctr	70	49	112	28	259	22
	<b>Total</b>	<b>1708</b>	<b>1025</b>	<b>3214</b>	<b>543</b>	<b>6490</b>	<b>420</b>

## Appendix H: Mental Health Treatment Expenditures

Jail Number	Jail Name	FY11 Reported Cost of Mental Health Meds	FY11 Reported Cost of MH Services	Total Reported Treatment Costs
001	Accomack County Jail	\$9,900	\$23,400	\$33,300
003	Albemarle-Charlottesville Reg.	\$197,000	\$183,000	\$380,000
005	Alleghany County Regional Jail	\$25,000	\$20,000	\$45,000
009	Amherst County Jail	\$17,846	\$24,000	\$41,846
011	Appomattox County Jail	\$0	\$0	\$0
013	Arlington County Detention Fac	\$56,400	\$549,120	\$605,520
023	Botetourt County Jail	\$3,500	\$2,250	\$5,750
025	Brunswick County Jail	\$2,266	\$450	\$2,716
037	Charlotte County Jail	\$18,000	\$0	\$18,000
041	Chesterfield County Jail	\$46,000	\$48,500	\$94,500
047	Culpeper County Jail	\$20,000	\$500	\$20,500
053	Dinwiddie County Jail	\$0	\$0	\$0
059	Fairfax Adult Detention Center	\$177,867	\$800,000	\$977,867
061	Fauquier County Jail	\$13,000	\$6,500	\$19,500
067	Franklin County Jail	\$0	\$0	\$0
069	Northwestern Regional Jail	\$89,943	\$183,691	\$273,634
073	Gloucester County Jail	\$12,566	\$31,000	\$43,566
087	Henrico County Jail	\$169,929	\$543,073	\$713,002
089	Henry County Jail	\$7,461	\$0	\$7,461
103	Lancaster Correctional Center	\$3,613	\$1,500	\$5,113
107	Loudoun County Adult Detention	\$6,615	\$277,273	\$283,888
117	Mecklenburg County Jail	\$19,000	\$0	\$19,000
119	Middle Peninsula Regional	\$49,034	\$169,027	\$218,061
121	Montgomery County Jail	\$6,500	\$14,000	\$20,500
131	Eastern Shore Regional Jail	\$2,464	\$2,100	\$4,564
135	Piedmont Regional Jail	\$84,700	\$15,000	\$99,700
137	Central Virginia Regional Jail	\$144,978	\$11,220	\$156,198
139	Page County Jail	\$6,000	\$79,188	\$85,188
141	Patrick County Jail	\$1,200	\$3,840	\$5,040
143	Pittsylvania County Jail	\$11,000	\$0	\$11,000
153	Pr. William/Manassas Regional	\$26,156	\$250,000	\$276,156
157	Rappahannock County Jail	\$1,200	\$360	\$1,560
161	Roanoke County/Salem Jail	\$20,000	\$59,649	\$79,649
163	Rockbridge Regional Jail	\$8,939	\$176,618	\$185,557
165	Rockingham-Harrisonburg Reg.	\$22,746	\$8,800	\$31,546
171	Shenandoah County Jail	\$0	\$0	\$0
175	Southampton County Jail	\$3,400	\$0	\$3,400
187	Warren County Jail	\$1,100	\$3,600	\$4,700
193	Northern Neck Regional Jail	\$38,682	\$69,200	\$107,882
220	Danville City Jail Farm	\$4,192	\$4,500	\$8,692

Jail Number	Jail Name	FY11 Reported Cost of Mental Health Meds	FY11 Reported Cost of MH Services	Total Reported Treatment Costs
460	Pamunkey Regional Jail	\$160,900	\$0	\$160,900
465	Riverside Regional Jail	\$302,962	\$308,022	\$610,984
470	Virginia Peninsula Regional	\$171,068	\$17,949	\$189,017
475	Hampton Roads Regional Jail	\$400,121	\$375,000	\$775,121
480	New River Regional Jail	\$26,500	\$100,000	\$126,500
485	Blue Ridge Regional Jail Authority	\$164,695	\$294,118	\$458,813
490	Peumansend Creek Regional	\$9,500	\$7,300	\$16,800
491	Southside Regional Jail	\$38,599	\$50,900	\$89,499
492	Southwest VA Regional Jail	\$363,231	\$317,578	\$680,809
493	Middle River Regional Jail	\$79,456	\$234,967	\$314,423
494	Western Virginia Regional Jail	\$39,779	\$134,165	\$173,944
510	Alexandria Detention Center	\$96,079	\$1,015,820	\$1,111,898
520	Bristol City Jail	\$6,906	\$8,200	\$15,106
550	Chesapeake City Jail	\$72,753	\$801,200	\$873,953
590	Danville City Jail	\$26,209	\$5,172	\$31,381
620	Western Tidewater Regional	\$46,387	\$145,920	\$192,307
630	Rappahannock Regional Jail	\$118,117	\$270,284	\$388,401
650	Hampton Correctional Facility	\$24,927	\$33,000	\$57,927
690	Martinsville City Jail	\$2,600	\$0	\$2,600
700	Newport News City Jail	\$56,118	\$0	\$56,118
710	Norfolk City Jail	\$35,000	\$203,760	\$238,760
740	Portsmouth City Jail	\$3,050	\$31,805	\$34,856
760	Richmond City Jail	\$57,658	\$28,000	\$85,658
770	Roanoke City Jail	\$0	\$0	\$0
810	Virginia Beach Correction. Ctr	\$88,420	\$0	\$88,420
	<b>Total</b>	<b>\$3,719,232</b>	<b>\$7,944,519</b>	<b>\$11,663,751</b>

## Appendix I: Incidents of Inmate Aggression

Jail Number	Jail Name	Incidents of Aggression	MI Perpetrators	MI Victims
001	Accomack County Jail	3	0	2
003	Albemarle-Charlottesville Reg.	8	2	0
005	Alleghany County Regional Jail	0	0	0
009	Amherst County Jail	1	0	0
011	Appomattox County Jail	0	0	0
013	Arlington County Detention Fac	2	2	0
023	Botetourt County Jail	3	1	1
025	Brunswick County Jail	0	0	0
037	Charlotte County Jail	2	0	0
041	Chesterfield County Jail	18	0	0
047	Culpeper County Jail	1	1	0
053	Dinwiddie County Jail	0	0	0
059	Fairfax Adult Detention Center	0	0	0
061	Fauquier County Jail	1	0	0
067	Franklin County Jail	0	0	0
069	Northwestern Regional Jail	1	0	0
073	Gloucester County Jail	1	0	0
087	Henrico County Jail	29	9	4
089	Henry County Jail	2	0	0
103	Lancaster Correctional Center	0	0	0
107	Loudoun County Adult Detention	8	0	0
117	Mecklenburg County Jail	0	0	0
119	Middle Peninsula Regional	1	1	0
121	Montgomery County Jail	5	0	0
131	Eastern Shore Regional Jail	0	0	0
135	Piedmont Regional Jail	15	6	0
137	Central Virginia Regional Jail	1	0	0
139	Page County Jail	0	0	0
141	Patrick County Jail	3	1	1
143	Pittsylvania County Jail	1	1	0
157	Rappahannock County Jail	0	0	0
161	Roanoke County/Salem Jail	3	0	0
163	Rockbridge Regional Jail	2	1	0
165	Rockingham-Harrisonburg Reg.	5	3	0
171	Shenandoah County Jail	0	0	0
175	Southampton County Jail	3	1	0
187	Warren County Jail	0	0	0
193	Northern Neck Regional Jail	0	0	0
220	Danville City Jail Farm	1	0	1
460	Pamunkey Regional Jail	3	2	0



Jail Number	Jail Name	Incidents of Aggression	MI Perpetrators	MI Victims
465	Riverside Regional Jail	40	3	4
470	Virginia Peninsula Regional	2	0	0
475	Hampton Roads Regional Jail	34	5	4
480	New River Regional Jail	14	1	2
485	Blue Ridge Regional Jail Authority	5	3	2
490	Peumansend Creek Regional	1	0	0
491	Southside Regional Jail	10	3	0
492	Southwest VA Regional Jail	1172	0	0
493	Middle River Regional Jail	5	0	5
494	Western Virginia Regional Jail	16	6	2
510	Alexandria Detention Center	8	6	0
520	Bristol City Jail	4	1	1
550	Chesapeake City Jail	19	10	9
590	Danville City Jail	7	2	0
620	Western Tidewater Regional	15	1	0
630	Rappahannock Regional Jail	16	0	0
650	Hampton Correctional Facility	4	1	0
690	Martinsville City Jail	5	1	0
700	Newport News City Jail	0	0	0
710	Norfolk City Jail	42	2	1
740	Portsmouth City Jail	0	0	0
760	Richmond City Jail	16	0	0
770	Roanoke City Jail	23	0	0
810	Virginia Beach Correction. Ctr	15	0	0
	<b>Total</b>	<b>1596</b>	<b>76</b>	<b>39</b>