

Mental Illness in Jails Report

Compensation Board

2013

November 1,
2013

Compensation Board Mental Illness in Jails Report (2013)

Authority: 2013 Virginia Acts of Assembly, Chapter 806
§53.1-83.1, §53.1-84 and §53.1-85, Code of Virginia

Item 69K “The Compensation Board shall provide an annual report on the number and diagnoses of inmates with mental illnesses in local and regional jails, the treatment services provided, and expenditures on jail mental health programs. The report shall be prepared in cooperation with the Virginia Sheriffs Association, the Virginia Association of Regional Jails, the Virginia Association of Community Services Boards, and the Department of Behavioral Health and Developmental Services and shall be coordinated with the data submissions required for the annual jail cost report. Copies of this report shall be provided by November 1 of each year to the Governor, Director, Department of Planning and Budget, and the Chairmen of the Senate Finance and House Appropriations Committees.”

Executive Summary: In the month of July, 2013 the Commonwealth of Virginia supported 64 local and regional jails and jail farms. Of this number there are 24 county jails, 13 city jails, 25 regional jails and 2 jail farms. City and county jails are operated under the authority of the sheriff in that locality. Jail farms are operated under the authority of the locality they serve by an appointed superintendent. Regional jails are operated under the authority of a regional jail board or authority consisting of at least the sheriff and one other representative from each participating jurisdiction. All but three regional jails are operated by a superintendent chosen by the regional board or authority. Alleghany Regional Jail, Rockingham-Harrisonburg Regional Jail and Eastern Shore Regional Jail are all operated by the sheriff of the locality in which the jail resides.

A survey of mental illness in Virginia jails was developed by the Department of Behavioral Health & Development Services (DBHDS) and staff of the Senate Finance Committee and Compensation Board. The Compensation Board posted the mental health survey on its website in August 2013 for completion by Compensation Board funded local and regional jails. With the support of the Virginia Sheriffs' Association and the Virginia Association of Regional Jails, the Compensation Board received surveys from 58 out of 64 local and regional jails. The Newport News City Jail Farm and Danville City Jail Farm did not respond to the survey, as they indicated that all mentally ill offenders are held at the local city jail. Alleghany County Regional Jail, Charlotte County Jail, Hampton City Jail and Warren County Jail did not submit survey data.

The goal of the survey was to provide information to the Virginia General Assembly, the Compensation Board and the DBHDS regarding jail resource needs for appropriately managing inmates with mental illness. Survey questions directed jail personnel to report data as reflected for the month of July 2013, or for FY2013. The data provided in this report is reflective only of local and state responsible inmates housed in local and regional jails and does not include federal inmates or contract inmates from other states. The data in this report is as reported to the Compensation Board by the local and regional jails in their 2013 mental health survey, submitted as of September 17, 2013. With the exclusion of Danville City Jail Farm, Newport News City Jail Farm, Alleghany County Regional Jail, Charlotte County Jail, Hampton City Jail and Warren County Jail, data from **58** out of **64** local and regional jails was used in this report.

Survey Background

The Compensation Board provided a mental illness survey for completion by all local and regional jails requesting statistical information for the month of July, 2013, such as screening and assessment, diagnoses, housing, and most serious offense type of mentally ill inmates. The survey also collects data regarding inmates' access to mental health programs and assistance in the facility, including medication and treatment. In addition, the survey is used to determine the providers of screening/assessment and treatment in each facility, whether they are private mental health professionals, Community Services Board (CSB) staff, or jail staff. Jails also reported their method of housing data regarding the mentally ill population and the amount of mental health and/or Crisis Intervention Training provided to the jail staff, if any. Finally, jails were asked to provide the fiscal year cost of all mental health services and medications.

Data gleaned from surveys of **58** out of **64** local and regional jails is included in this report.

Population & Demographics in Jails

Based upon LIDS data for the month of July 2013 there was an Average Daily Population (ADP) of **7,987** State Responsible (SR), **18,687** Local Responsible (LR) inmates, and **316** ordinance violators confined in local and regional jails in the Commonwealth of Virginia, (**6** jails excluded from this report). A Local Responsible Inmate (LR) is any person arrested on a state warrant and incarcerated in a local correctional facility prior to trial, any person convicted of a misdemeanor offense and sentenced to a term in a local correctional facility, any person convicted of a felony offense on or *after* January 1, 1995 and given an effective sentence of (i) twelve months or less or (ii) less than one year, or any person convicted of one or more felony offenses committed *before* January 1, 1995, and sentenced to less than two years. A State Responsible Inmate (SR) is any person convicted of one or more felony offenses and (a) the sum of consecutive effective sentences for felonies, committed on or after January 1, 1995, is (i) more than twelve months or (ii) one year or more, or (b) the sum of consecutive effective sentences for felonies, committed before January 1, 1995, is more than two years. Unlike SR and LR offenders, who have been arrested on a state warrant, offenders held for ordinance violations have been arrested on a local warrant, having been charged with an offense specific to that locality, which may or may not also appear in the Code of Virginia. Information provided in this report does not include inmates held for any federal or out-of-state authority.

Note: Regional percentages of the total jail ADP: Central-37.51%, Western-29.03%, Eastern-33.46%.

Mental Illness Statistics

Data in this section is as reported for July, 2013.

Jails were asked to indicate the number of inmates in each mental illness category, as shown in Figure 1.

Mental illness is defined as inmates who have been diagnosed with schizophrenia or a delusional disorder, bi-polar or major depressive, mild depression, an anxiety disorder, post traumatic stress disorder (PTSD), or any other mental illness as set out by the Diagnostic & Statistical Manual of Mental Disorders (DSM-V), published by the American Psychiatric Association, or those inmates who are suspected of being mentally ill but have received no formal diagnosis.

There were a total of **6,346** inmates known or suspected to be mentally ill (MI Inmates in 2012 - 6,322, MI Inmates in 2011 - 6,481, MI Inmates in 2010 - 4,867). Of these mentally ill inmates, **27.80%** were Female and **72.20%** were Male. **48.12%** were Pretrial and **51.88%** were Post-Conviction. Pre-trial refers to inmates held in a local or regional jail awaiting trial. Post-Conviction refers to inmates who have been found guilty of one or more criminal charges, with or without additional pending charges, and are serving sentence in the jail or awaiting transfer to a Department of Corrections (DOC) facility.

While an inmate may have multiple diagnoses each inmate is counted only once, in the category of the most serious illness for which they have been diagnosed. Figure 1 reflects the number of mentally ill inmates housed in July, 2013 and the type of disorder.

In addition, **56.02%** of the mentally ill population and **13.17%** of the general population of jails who provided data on the number and diagnoses of inmates with mental illness has been diagnosed as having a serious mental illness. Serious mental illness includes diagnoses of schizophrenia/delusional, bi-polar/major depressive or post traumatic stress disorder. This is a slight increase from the figures reported in 2012 (MI Pop - 48.13%, Gen Pop - 11.41%).

Figure 1: Number & Diagnoses of Inmates with Mental Illness

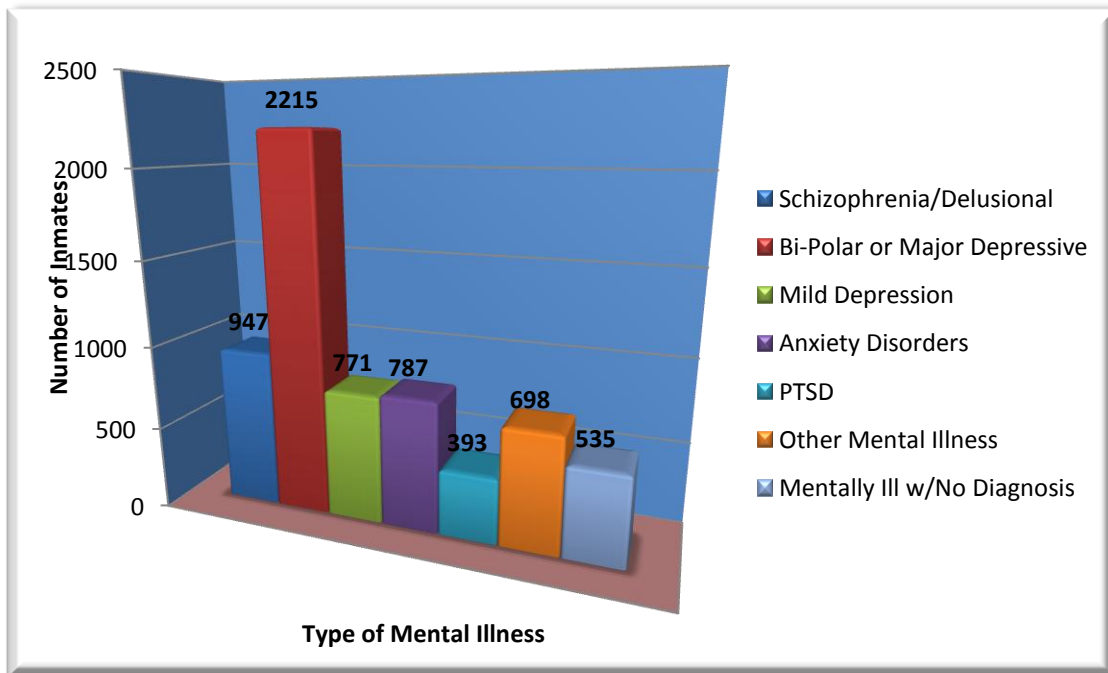


Figure 2: Percentage and Number of Mentally Ill Populations by Region

	Central Region	Western Region	Eastern Region
Num of MI inmates	2,348	1,758	2,240
% of Total MI Pop	37%	27.70%	35.30%
% of MI in Region w/ Serious MI	54.64%	53.19%	59.69%
% of MI in Region Pretrial	47.27%	42.83%	53.17%
% of MI in Region Post-Con	52.73%	57.17%	46.83%
% of Regional ADP w/MI	22.34%	23.60%	24.80%

Figure 3 shows the number and percentage that each mental illness represents in both the Female and Male mentally ill populations.

Figure 3: Number & Percentage of M/F Mentally Ill Population Diagnoses

	Schizo/ Delusional	Bi- Polar/Major Depressive	Mild Depression	Anxiety Disorders	PTSD	Other Mental Illness	Mentally Ill w/no Diag
Female	205	705	216	268	125	149	96
Male	742	1510	555	519	268	549	439
Female	11.62%	39.97%	12.24%	15.19%	7.09%	8.45%	5.44%
Male	16.19%	32.96%	12.11%	11.33%	5.85%	11.98%	9.58%

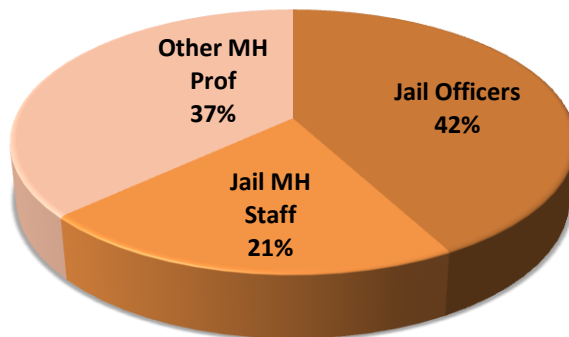
- **23.51%** of the local and regional jail inmate population was known or suspected to be mentally ill.
- A diagnosis of bi-polar/major depressive continues to be the most prevalent for both males and females. In this year's survey, a diagnosis of bi-polar/major depressive accounted for **34.90%** of all reported mental illness. In addition, 2013 is the first year that the number of inmates reported with Anxiety Disorders was higher than those reported to have Mild Depression.

Screenings & Assessments

Data in this section is as reported for July, 2013.

52 out of **58**, or **89.66 %** of all reporting jails, conduct a mental health screening for all inmates upon admission to the jail (2012 Screening - 77.42%, 2011 Screening - 85.71%). The provider conducting mental health screenings, as well as the screening measure itself, may differ between facilities.

Figure 4: Provider of jail mental health screenings

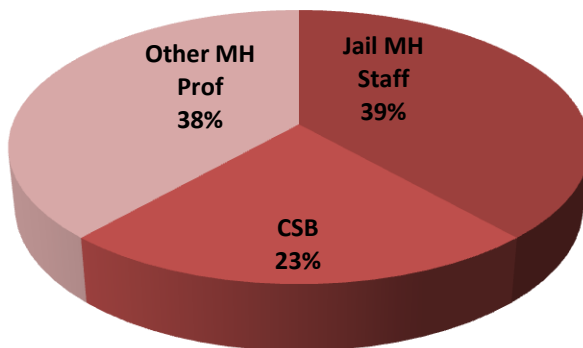


Comprehensive mental health assessments of inmates are also conducted, as follows:

- **41** jails, or **70.69%**, conduct assessments on all inmates who receive a positive screening for mental illness.
- **13** jails, or **22.41%**, conduct assessments only on inmates with acute symptoms of mental illness.
- **4** jails, or **6.91%**, do not conduct assessments at all.
- The percentage of jails conducting assessments on all inmates who receive a positive screening has increased 12.63% since 2012. This percentage dropped between the 2009 and 2010 reporting, but has continued to increase steadily since then (2012 - 58.06%, 2011 - 54%, 2010 - 48%, 2009 - 54.69%).

As with initial screenings, the type of individual conducting comprehensive mental health assessments, as well as the type of assessment, may differ between facilities. In some jails, comprehensive assessments may be conducted by any of the mental health providers shown in Figure 5.

Figure 5: Provider of jail comprehensive mental health assessment



Note: The percentages in Figure 5 for 'Jail MH Staff' and 'Other MH Prof' may be high due to a survey error that inadvertently resulted in some jails selecting these options unintentionally. A comparison to data from previous surveys indicates these providers may be overstated. The average percentages for each provider type over the last 2 years is 24% Jail MH Staff; 47% CSB; and 25% Other MH Professional.

Housing

Data in this section is as reflected in July, 2013.

There is no state funded Mental Health Residential Treatment Program operating within jail facilities. The housing of mentally ill inmates may therefore differ from jail to jail. The Department of Behavioral Health and Development Services (DBHDS) sponsors programs in a select number of jails, which provide additional mental health treatment and expanded Crisis Intervention Teams, but these pilot programs do not qualify as state funded residential treatment programs.

- **18** out of **58** reporting jails have Mental Health Units or bed areas separate from the General Population. Of these **18** jails, there are **63** beds for Females and **452** beds for Males.
- Jails reported that **2,580** additional beds would be needed to house all inmates with non-acute mental illness in mental health beds or units, (2012 - 2,206, 2011 - 1,731 2010 - 615).
- Of the **6,346** known mentally ill inmates, **1,412** were housed in isolation (2012 - 746). **29** of the **46** jails who housed mentally ill inmates in isolated or segregated cells did not operate a Mental Health Unit.
- **15** jails have noted that they would consider hosting a state-funded Mental Health Residential Treatment Program.

A total of **32** inmates were housed in jails more than 48 hours following the issuance of a court order to a state hospital for psychiatric commitment (Temporary Detention Orders) during the month of July, 2013.

Mental Health Treatment Services Provided

Mental health treatment services offered, as well as providers of those services, differ from jail to jail. Some jails may have a full time psychiatrist or general practice physician (MD) to attend to mental health needs and dispense psychotropic meds; other jails may contract with an outside psychiatrist/general practice physician (MD) to provide services on certain days of each month, etc. Nursing staff may also provide mental health treatment.

Treatment Hours & Providers

As illustrated in Figures 6 through 9, Community Services Boards (CSB) and private contractors provide the most significant portion of mental health treatment in jails. The Virginia Code requires that every locality form their own, or partner with other localities to form a Community Services Board (CSB). The purpose of the Community Services Boards is to facilitate community-based mental health and substance abuse services to citizens, as funding allows. CSB's are licensed by DBHDS and work closely with courts, jails, and human service agencies.

The percentage of treatment hours by private contractors has increased steadily since 2009, and 2013 is the first year that private contractors were reported to have provided a greater number of treatment hours than the local CSB's. As noted in the Final Remarks of the 2012 report, this may be due to budget reductions sustained by the Community Services Boards over the last couple biennia.

The information provided below is for the month of July, 2013.

- A total of **16,793** treatment hours were provided in **50** of **58** jails. This includes treatment by any provider included in Figure 6.
- All data reflected in Figures 6, 7, and 8 are from an ADP of **25,704**.
- The average number of hours provided by private contractors increased **18** hours since 2012 (2012 - 116.88).

Figure 6: Average Number of Treatment Hours per Type of Provider

Provider	Average # of MH Trtmt Hrs Provided
Psychiatrists	24.70
Medical Doctors	4.24
Jail Mental Health Staff	53.34
Community Services Board	118.70
Private Contractors	134.88

33 jails provide followup case management for mentally ill inmates after their release from the jail.

Figure 7: Hours of Treatment Provided

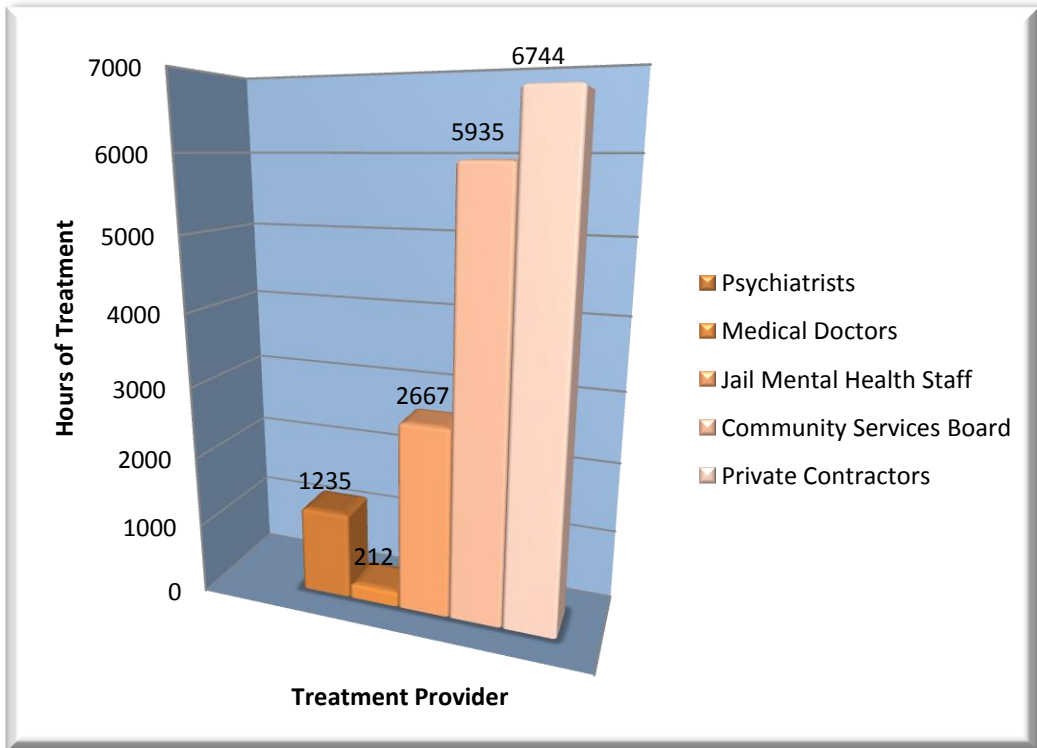


Figure 8: Providers of Treatment

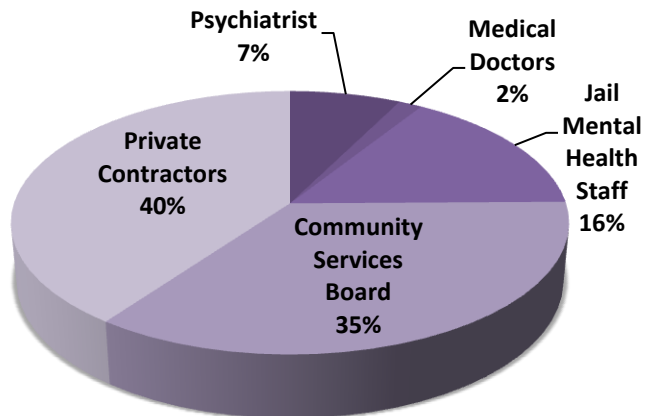


Figure 9: Average Number of Treatment Hours per Type of Provider by Region

	Central Region	Western Region	Eastern Region
Psychiatrists	29.85	16.33	26.20
Medical Doctors	2.90	5.13	5.13
Jail Mental Health Staff	95.90	19.80	30.67
Community Services Board	164.95	19.27	156.47
Private Contractors	156.80	57.33	183.20

There has been a significant shift from 2012 to 2013 in average number of treatment hours in the Central Region from Community Services Boards to Jail Mental Health Staff and Private Contractors (Central Region 2012 Jail MH Staff - 33.83, CSB - 253.48, Private Contractors - 127.39).

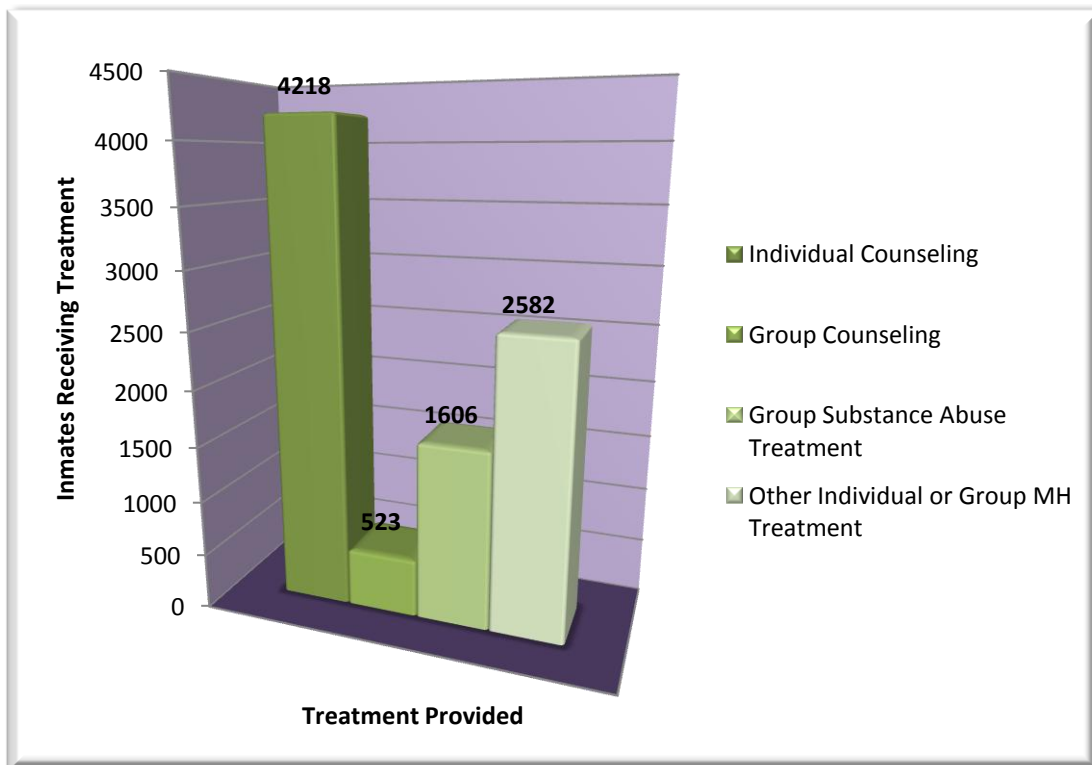
Note: Central Virginia Regional Jail, Eastern Shore Regional Jail, Franklin County Jail, Piedmont Regional Jail, Rockbridge Regional Jail, Shenandoah County Jail, Southampton County Jail and Sussex County Jail did not submit responses to the survey question regarding provider of treatment.

Treatment Services

The following charts represent types of treatments received by inmates during the month of July, 2013. An inmate may have received multiple types of treatment. Treatment may be provided by any of the entities referenced in Figure 6.

56 of the **58** reporting jails provided data on the number of inmates receiving treatment services in the categories shown below in their facilities. All inmate numbers reflected in Figures 10, 11, and 12 are from an ADP of **26,483**.

Figure 10: Type of Treatment Provided



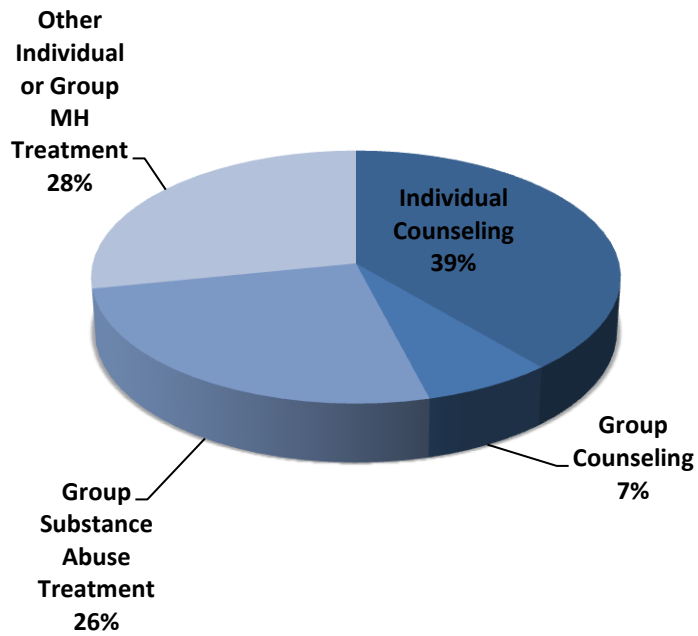
Not all facilities provide all of the above services

The distribution of the type of treatment provided has been the same since the 2010 report.

Figure 11: Hours of Treatment Provided by Region

	Central Region	Western Region	Eastern Region
Individual Counseling	1,908	1,052	780
Group Counseling	215	110	421
Group Substance Abuse Treatment	1,112	538	1,687
Other MH Treatment	2,124	382	1,772

Figure 12: Type of Service Percentage by Number of Inmates Treated



Note: Central Virginia Regional Jail, Eastern Shore Regional Jail, Franklin County Jail, Piedmont Regional Jail, Rockbridge Regional Jail, Shenandoah County Jail, Southampton County Jail and Sussex County Jail did not submit responses to the survey question regarding provider of treatment

Medication

Some, although not all, inmates with mental illness require the assistance of psychotropic medications. Psychotropic refers to mood altering drugs which affect mental activity, behavior, or perception. Many times these medications are provided and dispensed by the jail. However, as noted in the survey, there are certain medications that some jails do not provide. In certain cases an inmate's medication may be delivered to the jail by a 3rd party, such as a physician treating the offender pre-incarceration, or a family member authorized by the jail to bring the necessarily prescribed medication.

Psychotropic medications are broken down into 4 categories: Antipsychotic, Mood Stabilizer/Anticonvulsant, Antidepressant and Antianxiety.

- Antipsychotic medications include drugs such as: Haldol, Zyprexa, Risperdal, Seroquel, Triliafon, Prolixin, Thorazine, Abilify, Geodon, Clozaril
- Mood Stabilizer/Anticonvulsant medications include drugs such as: Depakote, Lithium, Tegretal, Topamax, and Trileptal
- Antidepressant medications include drugs such as: Prozac, Zoloft, Lexapro, Wellbutrin, Paxil, Elavil, Pamelor, and Desyrel
- Antianxiety medications include drugs such as: Ativan, Xanax, Librium and Valium

Data in this section is as reflected in July 2013.

- During this month there were **9,316** prescriptions for psychotropic medications being dispensed in local and regional jails. The number of medications administered may exceed the number of inmates receiving treatment, as an inmate may be taking more than one medication. There were **2,740** more distributed medications reported in 2013 than in 2012 (2012 - 6,576), an increase of **41.67%**.
- A total of **426** jail inmates with mental illness refused psychotropic medication. This is **6.71%** of the mentally ill population.

Figure 13: Number and Type of Psychotropic Medications Dispensed

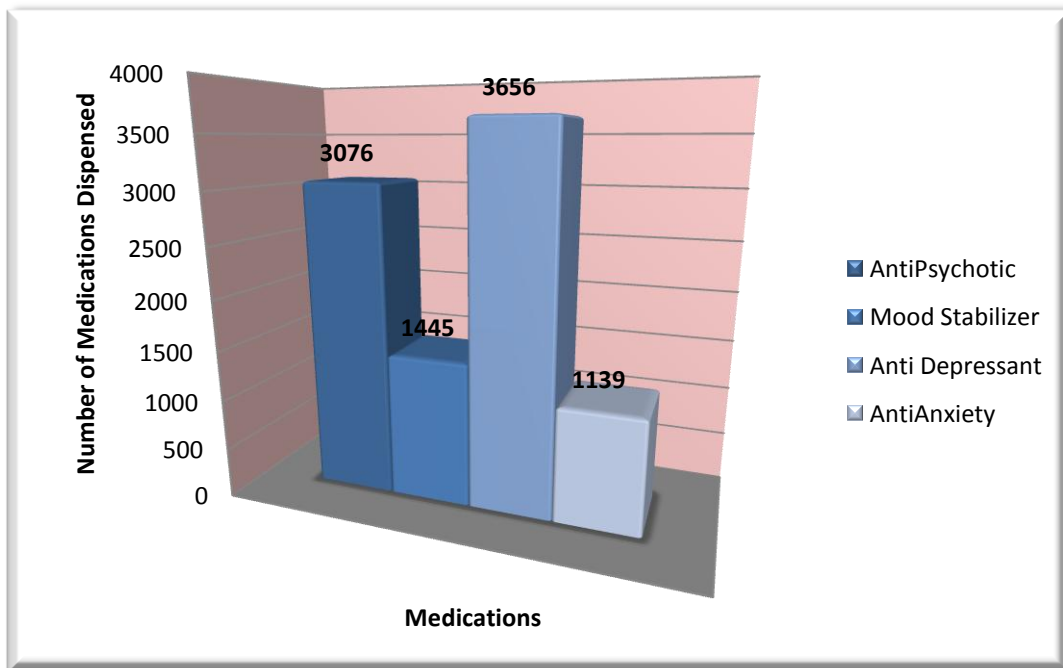
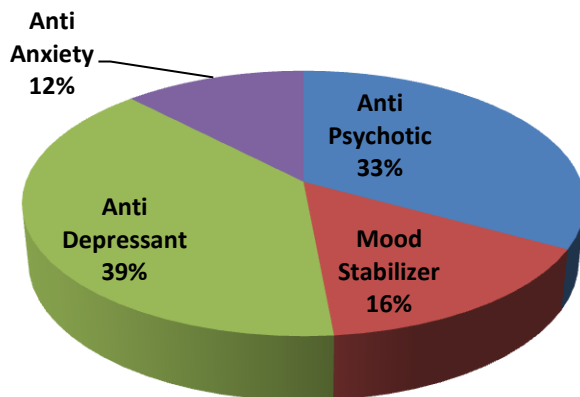


Figure 14: Percentage of Psychotropic Medication Dispensed by Type



Substance Abuse/Special Education

Data in this section is as reflected in July 2013.

- Of the **6,346** inmates with mental illness, **3,620** had a co-occurring substance use/abuse disorder, or about **57.04%** of the mentally ill jail population (2012 SA w/MI- 2,919, 46.17%).
- Those inmates with co-occurring mental illness and substance use/abuse disorder comprised **13.41%** of the general jail population.
- **4,659** inmates without mental illness were reported to have substance use/abuse disorders, representing about **17.26%** of the jail population (2012 SA- 5,778, 21.67%).
- As illustrated earlier in Figure 9, **19%** of all inmates receiving jail provided treatment services are receiving group substance abuse treatment.

Federal regulations mandate that all correctional facilities provide access to Special Education for inmates. During the month of July, 2013, **210** inmates were receiving Special Education (2012 Spec Ed- 204).

Mental Illness & Offense Type

For each inmate identified as mentally ill, jails were asked to note the most serious offense type on which the offender was held during the month of July, 2013. The following are the offense types, listed in order of severity: Felony-Violent, Felony-Drug, Felony-Nonviolent, Misdemeanor-Violent, Misdemeanor-Drug, Misdemeanor-Nonviolent. Most serious offense classification is based on the most serious offense with which an inmate is currently charged, and not necessarily of which the inmate is ultimately convicted.

Of the **6,346** inmates with mental illness, jails reported Most Serious Offense Type for **98.96%**, or **6,280** of them. Of the inmates for whom Most Serious Offense Type was reported, **69.70%** had Felony Offense(s), **26.93%** were held on Misdemeanor Offense(s) and **3.38%** were held on Ordinance Offense(s).

Figure 15: Most Serious Offense Type

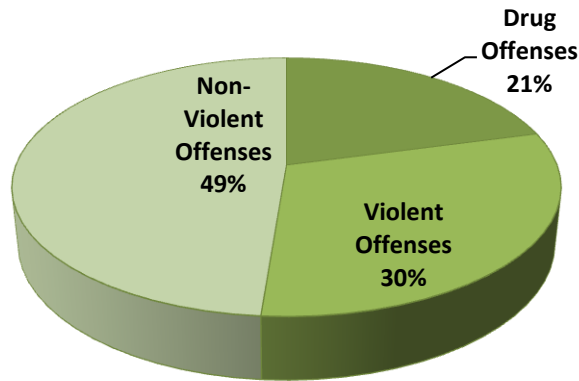


Figure 16 illustrates the percentage each offense comprises of each diagnosis.

Figure 16: Mental Illness Categories & Offense Type

	Felony Violent	Felony Drug	Felony Non-Violent	Mis Violent	Mis Drug	Mis Non-Violent	ORD
Schizophrenia/Delusional	27.89%	8.11%	26.74%	7.47%	6.84%	19.68%	3.26%
Bi-Polar/Major Depressive	25.25%	16.11%	34.15%	4.36%	3.70%	13.11%	3.33%
Mild Depression	14.43%	19.28%	25.03%	6%	8.81%	21.46%	4.98%
Anxiety Disorder	20.76%	14.98%	28.78%	4.34%	11.83%	14.59%	4.73%
Other Mental Illness	32.81%	15.69%	28.67%	4.14%	2.57%	14.27%	1.85%
Mentally Ill w/ No Diagnosis	26.96%	11.79%	30.18%	3.93%	2.50%	22.14%	2.50%

Figure 17 illustrates the regional offense type percentage of mentally ill inmates for whom most serious offense type was reported.

Figure 17: Mental Illness and Offense Type Percentage by Region

	Central Region	Western Region	Eastern Region
Felony	70.52%	74.59%	63.96%
Misdemeanor	25.92%	20.60%	32.67%
Ordinance	3.55%	3.12%	3.38%

Figure 18 illustrates the regional crime type percentage of mentally ill inmates for whom most serious offense type was reported.

Figure 18: Mental Illness and Crime Type Percentage by Region

	Central Region	Western Region	Eastern Region
Violent	29.81%	25.05%	32.04%
Non-Violent	49.73%	48.59%	43.24%
Drug	16.91%	21.56%	21.33%

Figure 19: Mental Illness & Offense Type Percentage of Increase/Decrease since 2012

	Felony Violent % Change	Felony Drug % Change	Felony Non-Violent % Change	Mis Violent % Change	Mis Drug % Change	Mis Non-Violent % Change	ORD
Schizophrenia/Delusional	0.02%	-2.75%	-3.80%	2.48%	-0.82%	2.67%	2.19%
Bi-Polar/Major Depressive	-3.50%	0.85%	-1.69%	1.13%	1.85%	1.28%	0.10%
Mild Depression	-7.32%	6.13%	-10.85%	2.75%	0.69%	6.04%	2.54%
Anxiety Disorder	1.65%	-1.04%	-2.69%	0.09%	2.18%	1.08%	- 1.25%
PTSD	5.13%	-4.81%	5.07%	2.71%	-3.65%	-6.21%	1.77%
Other Mental Illness	0.67%	5.27%	-3.77%	-0.92%	-0.26%	0.43%	- 1.42%
Mentally Ill w/ No Diagnosis	-1.48%	5.55%	-2.11%	1.73%	0.11%	-5.38%	1.58%

Note: Accomack County Jail, Franklin County Jail, and Piedmont Regional Jail did not submit responses to the survey question regarding most serious diagnosis and offense type. Of jails who did submit data regarding mental illness and offense type, not all jails submitted offense type data on all mentally ill inmates.

Note: The calculation of Violent, Non-Violent and Drug offenses only include state charges; ordinance violations are not included.

Inmate Aggression

In the month of July, 2013 there were **287** documented incidents of inmate aggression (to include physical or sexual assault and/or threats of violence) toward other inmates, and **90** documented incidents of inmate aggression toward jail staff (2012 - 297, 208). Of these incidents, **91** inmate perpetrators had been diagnosed as mentally ill, and **33** victims of inmate aggression had been diagnosed as mentally ill.

Jail Staff & Maintenance of Mental Health Data

Depending on the operational capacity of the jail, the number of staff members, including both deputies and civilian personnel, ranges from **12** to **541**.

- **42** of **57** reporting jails provide mental health training to each new jail officer/deputy prior to his/her initial assignment to the jail. Of these jails, there is an average of **9.2** hours of mental health training provided per jail officer/deputy. **12** jails provide **20** hours or greater of mental health training per jail officer/deputy prior to initial assignment.
- **29** of **57** reporting jails require jail officers/deputies to complete additional training in mental health topics annually. Of these jails, jail officers/deputies are required to complete an average of **2.18** hours of training in mental health topics each year.
- **41** of **57** reporting jails have jail officers/deputies who have completed Crisis Intervention Team (CIT) training. Of these jails, an average of **16** jail officers/deputies (an average of **11.07%**) in each jail has completed CIT training. **4** jails reported that at least half of the total staff has completed CIT training.
- Crisis Intervention Team (CIT) Training is sponsored collaboratively by the Department of Criminal Justice (DCJS) and the Department of Behavioral Health and Developmental Services (DBHDS). An overview of the 40 hour core training available to law enforcement personnel and first responders may be reviewed on the Virginia CIT Coalition website: <http://vacitcoalition.org/>.

41 jails indicated that their jail's electronic inmate management system includes mental health screening items. **11** jails indicated that their electronic inmate management system includes inmate psychiatric diagnoses.

Note: Fairfax County Jail did not provide responses to the questions regarding number of jail staff, Crisis Intervention Training and mental health training provided to jail staff.

Treatment Expenditures

The following reflects the cost of all mental health treatment, including medications, as reported by the jails for FY13. Some jails provided estimated or pro-rated annual costs; total figures have not been audited. **4** jails did not report cost information for medications, therefore costs reported are from a mentally ill population of **6,054**. **2** jails did not report the cost of mental health services, excluding medications, therefore costs reported are from a mentally ill population of **6,318**.

- The total reported cost of all psychotropic medications administered was **\$2.7 million**, a million dollars less than 2012 (2012 - \$3.7 million).
- The total reported cost of mental health services, excluding medication but including medical doctors and nursing, was **\$8 million**, \$1.6 million dollars less than 2012 (2012 - \$9.6 million).
- Total cost of Mental Health Treatment was estimated at approximately **\$10.7 million in FY13**, with **62.45%** of these costs funded by the locality, **11.24%** funded by the state, **0.37%** funded by the federal government, **25.95%** by other funding sources. There has been a decrease of \$2.3 million in reported mental health expenditures from 2012 (2012 - \$13.3 million). This is the same amount of the increase from 2011 to 2012.

Note: Martinsville City Jail, Middle River Regional Jail, Page County Jail, and Shenandoah County Jail reported a mentally ill population with medications dispensed but did not report the cost of medications.

Note: Martinsville City Jail and Shenandoah County Jail reported that mental health services were provided but did not report the cost of such services.

Final Remarks & Future Measures

Sheriffs and Jail Superintendents were notified in June, 2013 of survey deadlines and instructions, and were directed to an advanced copy of the mental health survey posted to the Compensation Board website. No significant updates were made to the jail mental health survey for 2013.

In June, 2013 the Compensation Board brought live an updated web-based version of the Local Inmate Data System, the database that houses confinement and offense statistics for inmates in all local and regional jails. In this new system the jails do not yet have a way of easily and quickly determining an offender's most serious offense. Question 8 of the jail mental health survey asks that jail staff report mentally ill inmate counts grouped by their most serious offense. Jail staff are still able to determine an offender's most serious offense on their own, but the necessity of manual review of an inmate's charges in lieu of an automated method of retrieving that information, may have an impact on the reliability of some of the responses to the question regarding most serious offense.

In FY13/14 the Department of Behavioral Health and Developmental Services (DBHDS) received \$1.5 million in general fund appropriation for the development and implementation of six new Crisis Intervention Team (CIT) Assessment Sites. These sites would be clinically based settings where law enforcement may bring people for assessment as an alternative to incarceration. The Chesapeake/Portsmouth facility opened in March, 2013 and serves the cities of Chesapeake and Portsmouth; the Henrico County facility opened in December, 2012 and serves the county of Henrico; and the New River Valley site opened in January, 2013 and serves the counties of Floyd, Giles, Montgomery, Pulaski, and the city of Radford. The Piedmont site opened in September, 2013 and serves the counties of Henry, Franklin, Patrick, and the city of Martinsville; the Arlington Site opened in September, 2013 and serves the county of Arlington; and the Richmond/Chesterfield site opened in October, 2013 and serves the city of Richmond and the county of Chesterfield.

The Compensation Board, with input and assistance from DBHDS, the Virginia Sheriffs' Association and the Virginia Association of Regional Jails, and staff of the Senate Finance Committee will continue to review the survey instrument on an annual basis and make improvements and updates as needed.

Further details of data gleaned from the 2013 mental illness survey and summarized in this report, including the survey instrument and organization of jail regions, are available in the appendices of this document.

Data in this report continues to be utilized by DBHDS, along with the Senate Finance Committee, for research, as well as to assist in the development of funding needs analysis for jail mental health treatment, jail diversion programs, expansion of Crisis Intervention Teams and post-confinement follow-up care.

APPENDICES

Appendix A: 2013 Virginia Local & Regional Jail Survey: Assessment and Treatment of Inmates with Mental Illness

Appendix B: Jail Regions

Appendix C: Number & Diagnoses of Inmate Mental Illness in Jails

Appendix D: Most Serious Offense of Inmates with Mental Illness in Jails

Appendix E: Hours of Mental Health Treatment Services Provided

Appendix F: Type of Mental Health Treatment Services Provided

Appendix G: Mental Health Medication Dispensed

Appendix H: Mental Health Treatment Expenditures

Appendix I: Incidents of Inmate Aggression

Appendix A: 2013 Local and Regional Jail Survey: Assessment and Treatment of Inmates with Mental Illness

Virginia Local and Regional Jails Survey: Assessment and Treatment of Inmates with Mental Illness

****Please do not attempt to complete this survey before August 1, 2013.****

The Virginia Sheriffs' Association and the Virginia Association of Regional Jails have reviewed this survey, and encourage their members to respond. Our goal is to provide information to the Compensation Board, the Virginia General Assembly, and the Dept. of Behavioral Health and Developmental Services (DBHDS), regarding jail resource needs for appropriately identifying and managing inmates with mental illness.

Definitions for some of the terms are provided at the end of this survey.

Please provide the data for your jail by August 26, 2013. *If LIDS queries are needed to assist in the completion of this survey please be sure your July Financials have been certified and approved. Thank you for completing this survey.*

(Please be sure not to use commas in any numeric field)

Name of Jail/ADC:

Address: City: State: Zip:

Phone:

Fax:

Email address:

Sheriff/Chief Administrator:

Name of contact person completing survey:

Phone number of contact person:

Email address for contact person:

1. The total ADP of the jail (**except federal and out-of-state contract**) for July 2013 was inmates. Of the jail's July 2013 ADP were female and were male.

2. Please indicate below the ADP of inmates from each category that are included in Question 1 above:

- State responsible
- Local responsible
- Ordinance Violators

Total (should match total ADP in Question 1)

3. Please indicate below the ADP of inmates from each category that are included in Question 1 above:

- Pre-trial
- Post-conviction

Total (should match total ADP in Question 1)

4. The number of inmates charged with public intoxication housed in the jail during the month of July, 2013 was .
5. Jail inmates with Substance Use/Abuse Disorders: There were inmates known or suspected to have Substance Abuse Disorders but who have no clinically diagnosed or suspected, mental illness, in the jail during the month of July 2013.
6. Special Education Jail Inmates. There were inmates receiving special education during the month of July 2013.
7. Please indicate the number of inmates with mental illness in each of the categories below. **Please count each inmate only once for this item (unduplicated counts), counting only the most serious or prominent diagnosis for that inmate. (Do not include federal or out-of-state contract inmates.)** Be sure to indicate the total number of inmate days for each category. A pretrial jail roster to assist in separating pretrial from post conviction inmates is available from your LIDS Technician, as well as data on the number of inmate days. For total inmate day data be sure to provide your LIDS Technician with the name and SSN of each inmate.

Mental Illness Category	Females (Pretrial) in jail in July 2013	Females (PostConviction) in jail in July 2013	Males (Pretrial) in jail in July 2013	Males (PostConviction) in jail in July 2013	Total Inmate Days
Inmates with Schizophrenia, Schizoaffective Disorder or Delusional Disorder	<input type="text"/>	<input type="text"/>	<input type="text"/>	<input type="text"/>	<input type="text"/>
Inmates with Bipolar Disorder or Major Depressive Disorder	<input type="text"/>	<input type="text"/>	<input type="text"/>	<input type="text"/>	<input type="text"/>
Inmates with Dysthymic Disorder (mild depression)	<input type="text"/>	<input type="text"/>	<input type="text"/>	<input type="text"/>	<input type="text"/>
Inmates with Anxiety Disorder	<input type="text"/>	<input type="text"/>	<input type="text"/>	<input type="text"/>	<input type="text"/>
Inmates with Post Traumatic Stress Disorder (PTSD)	<input type="text"/>	<input type="text"/>	<input type="text"/>	<input type="text"/>	<input type="text"/>
Inmates with other mental illness diagnosis	<input type="text"/>	<input type="text"/>	<input type="text"/>	<input type="text"/>	<input type="text"/>
Inmates believed by history, behavior or other indicators to be mentally ill, for whom no clinical diagnosis is available	<input type="text"/>	<input type="text"/>	<input type="text"/>	<input type="text"/>	<input type="text"/>
Total number of inmates with a mental illness in this jail during the month of July 2013	<input type="text"/>	<input type="text"/>	<input type="text"/>	<input type="text"/>	<input type="text"/>

8. Please indicate the offense type of the mentally ill inmates in each category. Report the inmates' offense type using their **most serious offense, for current confinement. (Do not include federal or out-of-state contract inmates.)**

Mental Illness Category	Ord Viol	Mis Nonviolent	Mis Violent	Mis Drug	Felony Nonviolent	Felony Violent	Felony Drug
Inmates with Schizophrenia, Schizoaffective Disorder or Delusional Disorder	<input type="text"/>	<input type="text"/>	<input type="text"/>	<input type="text"/>	<input type="text"/>	<input type="text"/>	<input type="text"/>
Inmates with Bipolar Disorder or Major Depressive Disorder	<input type="text"/>	<input type="text"/>	<input type="text"/>	<input type="text"/>	<input type="text"/>	<input type="text"/>	<input type="text"/>
Inmates with Dysthymic Disorder (mild depression)	<input type="text"/>	<input type="text"/>	<input type="text"/>	<input type="text"/>	<input type="text"/>	<input type="text"/>	<input type="text"/>

Inmates with Anxiety Disorder	<input type="text"/>	<input type="text"/>	<input type="text"/>	<input type="text"/>	<input type="text"/>	<input type="text"/>	<input type="text"/>
Inmates with Post Traumatic Stress Disorder	<input type="text"/>	<input type="text"/>	<input type="text"/>	<input type="text"/>	<input type="text"/>	<input type="text"/>	<input type="text"/>
Inmates with other mental illness diagnosis	<input type="text"/>	<input type="text"/>	<input type="text"/>	<input type="text"/>	<input type="text"/>	<input type="text"/>	<input type="text"/>
Inmates believed by history, behavior, or other indicators to be mentally ill, for whom no clinical diagnosis is available	<input type="text"/>	<input type="text"/>	<input type="text"/>	<input type="text"/>	<input type="text"/>	<input type="text"/>	<input type="text"/>
Total number of inmates diagnosed with or suspected to have a mental illness in this jail during the month of July 2013	<input type="text"/>	<input type="text"/>	<input type="text"/>	<input type="text"/>	<input type="text"/>	<input type="text"/>	<input type="text"/>

9. During the month of July 2013, there were a total of inmates clinically diagnosed with co-occurring mental illness and substance abuse disorder in the jail.
10. A total of jail inmates clinically diagnosed with mental illness were housed in medical isolation cells, or other segregation cells in the jail during the month of July 2013 and spent a total of days in isolation/segregation.
11. Does your jail have one or more mental health housing units or bed areas that are physically separated from the general population and distinct from other medical bed units?
- Yes
 - No
12. If your jail has a mental health unit or bed area, indicate the number of mental health treatment beds in that area:
- Total beds for male inmates with mental illness
 - Total beds for female inmates with mental illness
 - N/A
13. A total of mental health beds would be needed at this jail during the month of July 2013, to house all inmates with mental illness in mental health beds or units. **(This number should include all inmates identified in Question 12).**
14. Does your jail conduct a mental health screening upon admission, in addition to standard booking questions, for some or all inmates?
(Check the item that applies to your jail.)
- All new admissions are screened for mental illness.
 - Some new admissions are screened for mental illness.
- (Estimated percentage of inmates screened) %
- No, our jail does not screen for mental illness on admission.
15. If your jail conducts a mental health screening, does the jail use a **validated** screening instrument, in addition to standard booking questions, with all inmates?
- Yes
 - No

16. Jail mental health screenings are conducted by: **Check all that apply**

- Jail Officers
- Jail MH Staff
- Other MH professional

17a. If so, what is the **validated** screening instrument used?

- Brief Jail MH Screen
- Jail Admission Screening Assessment Test (JASAT)
- Other validated jail MH screening instrument:

17b. Name of Instrument:

17c. Are there any other methods of screening for Mental Health issues in your jail? If so, please describe.

18. Indicate whether or not inmates suspected of having a mental illness receive a professional mental health assessment, following screening, or when needed. (check one)

- All inmates with a positive screening are referred for professional mental health assessment.
- Professional mental health assessments are only conducted when inmates have acute symptoms of mental illness.
- Professional mental health assessments are not conducted at this facility.

19. Professional mental health assessments of jail inmates are conducted by: (please mark all that apply.)

- Jail licensed MH/medical staff
- Private, contract MDs or other MH professionals
- CSB staff

20. A total of inmates remained housed at this jail for more than 48 hours, following the issuance of a court order to a state hospital for psychiatric commitment (Temporary Detention Orders) during the month of July 2013.

21. Please indicate the CSB/BHA that provides MH prescreening services for psychiatric commitment (Temporary Detention Orders) for this jail.

- The CSB/BHA that serves the county/city where our jail is located provides prescreening services for jail inmates. Name of CSB/BHA:
- Both the CSB/BHA that serves the county/city where our jail is located and other CSB's in the region that is served by our jail provide MH prescreening for psychiatric commitment

22. CSB prescreenings for psychiatric commitment (Temporary Detention Orders) for this jail are done via video:

- Always
- Sometimes
- Never

23. If your jail has a consulting or staff psychiatrist (MD), indicate the number of hours of psychiatrist

consultation time provided at your jail, during the month of July 2013. A total of hours of psychiatrist time were provided during the month of July 2013.

If your jail has a consulting or staff psychiatrist (MD) please provide their name, even if no services were provided during the month of July.

Psychiatrist's name(s) or group name

24. If the jail has a general practice, or staff MD, please enter the total number of hours of that MD's time devoted to the provision of mental health treatment (medication prescribing and monitoring) for the month of July 2013. A total of hours of general MD time were devoted to mental health treatment during the month of July 2013.

If your jail has a general practice (MD) please provide their name, even if no services were provided during the month of July.

General Practice MD's name or group name

25. What percentage of your jail's general or psychiatric MD consultations are provided by a remote video (MD) consultant:
- The jail does not use remote video MD services for mental health assessments and/or treatment.
 - The jail uses remote video MD services for less than 50% of mental health assessments and/or treatment
 - Yes, the jail uses remote video MD services for more than 50% of mental health assessments and/or treatment.

- 26a. Are inmates with diagnosed mental illness provided with follow up case management or discharge planning services upon release from your jail?
- Yes
 - No

b. Type of Services Provided

27. Jail Medication Formulary: Section 53.1-126 of the *Code of Virginia* requires that sheriffs and regional jail superintendents "...purchase at prices as low as reasonably possible all foodstuffs... and medicine as may be necessary" for the care of the inmates in their jails. Is your jail's purchase of psychotropic medication limited by Section 53.1-126?

- Yes
- No

28. The jail's formulary is set by:

a. Contract general medical services provider (Name of contractor providing medication)

b. Special contract with local or national pharmacy (Name of local or national pharmacy)

c. Other

29. List the numbers of inmates who received each type of psychotropic medication treatment at your jail during the month of July 2013:

If an inmate received medication from more than one category, please count that inmate in each relevant category. Some inmates receive treatment with more than one type of medication; the number of medications administered in July may exceed the number of inmates receiving treatment.

Please count an inmate for each type of antipsychotic or mood stabilizer medication he or she receives, and count only once for all types of antidepressant or antianxiety medication, even if the inmate received more than one type of antidepressant or antianxiety medication.

Medication Categories	Total number of Jail Inmates receiving each medication for treatment of mental illness	
I. Antipsychotic medications	Total number of inmates treated with each brand or type of medication	Please place an X in this column if the jail does not provide this medication
Haldol/haloperidol	<input type="text"/>	<input type="checkbox"/>
Zyprexa/olanzapine	<input type="text"/>	<input type="checkbox"/>
Risperdal/risperidone	<input type="text"/>	<input type="checkbox"/>
Seroquel/quetiapine	<input type="text"/>	<input type="checkbox"/>
Triliafon/perphenazine	<input type="text"/>	<input type="checkbox"/>
Prolixin/fluphenazine	<input type="text"/>	<input type="checkbox"/>
Thorazine/chlorpromazine	<input type="text"/>	<input type="checkbox"/>
Abilify/aripiprazole	<input type="text"/>	<input type="checkbox"/>
Geodon/ziprasidone	<input type="text"/>	<input type="checkbox"/>
Clozaril/clozapine	<input type="text"/>	<input type="checkbox"/>
Other antipsychotic medication(s)	<input type="text"/>	<input type="checkbox"/>
II. Mood Stabilizer/Anticonvulsant medications for major Mood Disorder	Total number of inmates treated with each medication brand/type	Please place an X in this column if the jail does not provide this medication
Depakote/Depakene/valproic acid	<input type="text"/>	<input type="checkbox"/>
Lithobid/lithium carbonate	<input type="text"/>	<input type="checkbox"/>
Tegretal/carbamazepine	<input type="text"/>	<input type="checkbox"/>
Topamax/topiramate	<input type="text"/>	<input type="checkbox"/>
Trileptal	<input type="text"/>	<input type="checkbox"/>
Other mood disorder medication(s)	<input type="text"/>	<input type="checkbox"/>
III. Antidepressant medications	Total number of inmates treated with this category of medication	Please place an X in this column if the jail does not provide this medication
(Examples: Prozac/fluoxetine, Zoloft/sertraline, Lexapro, escitalopram, Wellbutrin/bupropion, Paxil/paroxetine, Elavil, amitriptyline, Pamelor/nortriptyline, Desyrel/trazodone, etc.)	<input type="text"/>	<input type="checkbox"/>
IV. Antianxiety medications (Examples: Ativan/lorazepam, Xanax/alprazolam, Librium/chlordiazepoxide, Valium/diazepam, etc.)	<input type="text"/>	<input type="checkbox"/>

30. A total of jail inmates clinically diagnosed with mental illness refused prescribed psychotropic medication treatment during the month of July 2013.

Questions 31 through 33 should be answered using data from the entire Fiscal Year 2013

31. **Total cost for all psychotropic medications administered at your jail during Fiscal Year 2013:** \$

(Check one: estimated cost; actual, prorated cost)

32. **Total cost for all mental health services (excluding medications, but including MDs and nursing) provided by the jail during Fiscal Year 2013:** \$

(Check one: estimated cost; actual, prorated cost)

33. Indicate the amount of **funding from each of the sources below** for the amounts listed in questions 32 and 33:

Commonwealth of Virginia (state) Funds: \$

Federal funds: \$

Local funds: \$

Other funds: \$

Total funds: \$ **(Should equal the sum of questions 31 & 32)**

(Check one: funding sources are estimated funding sources are actual)

34. Does, or would the jail dispense psychotropic medications provided free of charge by the CSBs, DBHDS, or private provider, when the jail's MD has approved the medication for a particular inmate?

- Yes we currently accept such medications, under the proper circumstances
- No, we do not currently accept such medications
- Yes, we would accept such medications under the proper circumstances
- No, we would not consider accepting such medications

35. Indicate the numbers of inmates who received each of the following types of mental/behavioral health treatment delivered by all mental health services providers, for the month of July 2013.

Treatment Category	Number Treated	Hours of Treatment Provided
Individual counseling	<input type="text"/>	<input type="text"/>
Group mental health counseling	<input type="text"/>	<input type="text"/>
Group Substance Abuse treatment	<input type="text"/>	<input type="text"/>
Other types of individual or group mental health treatment	<input type="text"/>	<input type="text"/>

36. Please indicate the total number of **hours of mental/behavioral health treatment** provided by each of the below entities during the **month of July 2013**; please **include nursing staff time**, but **do not include the hours of treatment provided by psychiatrists or other MDs in this section**. **Number of hours here should match number of hours in question 35.**

Treatment Provider	Number of Treatment Hours
Jail mental health treatment staff (jail employees)	<input type="text"/>
Community Services Board (CSB/BHA) staff (Please include CSB staff assigned full-time to the jail. Not employees of the jail)	<input type="text"/>
Private contractors, including jail medical contractor (e.g., PHS, CMS)	<input type="text"/>
Total number of hours of individual or group mental health counseling provided to inmates at your jail for the month of July 2013	<input type="text"/>

37. Please indicate if your jail/locality would consider hosting a state-funded Mental Health Residential Treatment Program

- Yes, would consider housing a MH Residential Treatment program in the jail or jail complex.
- No, would not support housing a MH Residential Treatment program in the jail or jail complex.

38. Please indicate the number of documented incidents of inmate aggression, (to include physical or sexual assault and/or threats of violence). There were documented incidents of inmate aggression toward other inmates and documented incidents toward jail staff during the month of July 2013. Of these incidents inmate perpetrators had been clinically diagnosed as mentally ill, and victims of inmate aggression had been clinically diagnosed as mentally ill.

39. Please indicate the mental health data source used by your jail for responding to this survey. (Please mark all that apply).

- Mental Health Module of Jail Management System
- Other Mental Health Management System
- Access/Excel Database
- Paper Forms
- Other

Additional Comments

40. Please enter the name of the jail's electronic inmate management system

41. Does the jail's electronic inmate management system include MH screening items?

- Yes
- No

42. Does the jail's electronic inmate management system include inmate psychiatric diagnoses?

- Yes
- No

43. Please indicate who is responsible for maintaining mental health data, including but not limited to data used to respond to this survey. (Please mark all that apply).
- Jail licensed MH/medical staff
 - CSB staff
 - Private, contract MDs or other MH professionals
 - Jail Officers
44. The total number of staff employed at this jail is .
45. A total of hours of mental health training is provided to each new jail officer/deputy, prior to his/her initial assignment to the jail.
46. Jail Officers/Deputies are required to complete hours of annual training in mental health topics each year.
47. A total of officers/deputies on the jail staff have completed DCJS Certified 40-Hr Crisis Intervention Team (CIT) training.

Comments: Please include any remarks you wish regarding the management of inmates with mental illness in your jail

If you have any questions about this survey, please phone Kari Bullock at 804-371-4299 (SCB) or email kari.bullock@scb.virginia.gov. If you should experience any technical difficulties, please contact Anne Wilmoth at 804-225-3307(SCB) or email anne.wilmoth@scb.virginia.gov. Thank you for your participation in this important work.

ADP: Average Daily Population of the jail. This information may be obtained from the LIDS Technician.

BHA: Behavioral Health Authority

Co-occurring disorder: (dual diagnosis) – a comorbid condition in which an individual is suffering from a mental illness and substance abuse problem.

Clinical Diagnosis: a Diagnostic and Statistical Manual of Mental Disorder – Fourth Edition (DSM-IV) Axis I or Axis II disorder/condition. In general, clinical diagnosis are determined by psychiatrists, licensed clinical psychologists, licensed clinical social workers, or licensed professional counselors.

CSB: Community Services Board

DBHDS: Department of Behavioral Health and Developmental Services

Group Mental Health Counseling: Meeting of a group of individuals with a mental health clinician for the purpose of providing psychoeducation about various mental health topics and/or to provide group feedback and support with regard to mental health issues. Examples could include stress management, anger management, coping with depression, or NAMI meeting.

Group Substance Abuse Treatment: Meeting of a group of individuals with a substance abuse clinician for the purpose of providing psycho education about various substance abuse topics and/or to provide group feedback and support with regard to substance abuse issues. Examples could include AA meeting, NA meeting, or relapse prevention groups.

Individual Counseling: one on one session with licensed professional with the expressed purpose of improving the individual's understanding of their issues, enhancing their ability to cope with issues, and aiding them in the development of healthy coping skills.

MH: Mental Health

Mental health screening instrument: an instrument utilized to make an initial determination of an individual's mental health status, using standardized, validated instrument.

Two common types of screening instruments include, but are not limited to, the Brief Jail Mental Health Screen (BJMHS) and the Jail Admission Screening Assessment Test (JASAT). The standard booking questions related to mental health issues are not considered a screening instrument.

Mental health services: any type of service that helps treat or control an individual's mental health disorder(s). These can include but are not limited to individual mental health counseling, group mental health counseling, case management, or other types of individual or group mental health treatment. Many mental health services also address co-occurring substance-related disorders (see definition).

Mental illness: conditions that disrupt a person's thinking, perceptions, feeling, mood, ability to relate to others and/or daily functioning.

Most Serious Offense: Question 9 asks that you report an inmates' offense type using their most serious offense. Offense severity should be ranked as follows: Felony-Violent, Felony-Drug, Felony-Nonviolent, Misdemeanor-Violent, Misdemeanor-Drug, Misdemeanor-Nonviolent

Professional mental health assessment: A review of a client's clinical condition conducted by a trained mental health or medical professional which provides an in depth determination of a person's mental health status and treatment needs.

Psychiatrist: a psychiatrist is a medical doctor who specializes and is certified in treating mental health disorders.

Psychotropic medications: psychotropic medications are commonly used to treat mental health disorders and are those which are capable of affecting the mind, emotions and behavior of an individual.

Special Education Inmates: The Federal Government requires jails to provide Special Education to inmates in need of it.

Substance abuse: a maladaptive pattern of substance use leading to clinically significant impairment or distress.

Validated instrument: questionnaire which has undergone a validation procedure to show that it accurately measures what it aims to do, regardless of who responds, when they respond, and to whom they respond. The Brief Jail Mental Health Screen and the JASAT are examples of validated instruments.

Appendix B: Jail Regions

Central Region

Albemarle-Charlottesville Regional Jail
Alexandria Detention Center
Arlington County Detention Facility
Central Virginia Regional Jail
Charlotte County Jail
Chesterfield County Jail
Culpeper County Jail
Fairfax Adult Detention Center
Fauquier County Jail
Henrico County Jail
Loudoun County Adult Detention Center
Meherrin River Regional Jail
Northwestern Regional Jail
Northern Neck Regional Jail
Page County Jail
Pamunkey Regional Jail

Peumansend Creek Regional Jail
Prince William-Manassas Detention Center
Rappahannock County Jail
Rappahannock Regional Jail
Richmond City Jail
Rockingham-Harrisonburg Regional
Shenandoah County Jail
Warren County Jail

Western Region

Alleghany County Regional Jail
Blue Ridge Regional Jail Authority
Botetourt-Craig Jail
Bristol City Jail
Danville City Jail
Danville City Jail Farm
Franklin County Jail
Henry County Jail
Martinsville City Jail
Middle River Regional Jail

Montgomery County Jail
New River Valley Regional Jail
Patrick County Jail
Piedmont Regional Jail
Pittsylvania County Jail
Roanoke City Jail
Roanoke County Jail
Rockbridge Regional Jail
Southwest VA Regional Jail
Western VA Regional Jail

Eastern Region

Accomack County Jail
Eastern Shore Regional Jail
Gloucester County Jail
Hampton Roads Regional Jail
Lancaster County Jail
Middle Peninsula Regional Jail
Riverside Regional Jail
Southampton County Jail
Southside Regional Jail
Sussex County Jail
Virginia Peninsula Regional Jail
Chesapeake City Jail
Hampton City Jail
Newport News City Jail

Norfolk City Jail
Petersburg City Jail
Portsmouth City Jail
Western Tidewater Regional Jail
Virginia Beach City Jail

Appendix C: Number & Diagnoses of Inmate Mental Illness in Jails

Jail Num	Jail Name	Schizophrenia or Delusional Disorder	Bipolar/Major Depressive	Mild Depression	Anxiety Disorder	PTSD	Other Mental Illness	Mentally Ill w/no Diagnosis	Total Mental Illness Population	Total Pop (SR/LR/ORD)
001	Accomack County Jail	0	5	3	1	1	4	5	19	101
003	Albemarle-Charlottesville Regional Jail	6	35	12	15	0	3	0	71	385
013	Arlington County Detention Fac	32	41	6	7	3	11	4	104	333
023	Botetourt County Jail	0	22	33	11	3	3	1	73	110
041	Chesterfield County Jail	9	20	19	10	4	0	0	62	343
047	Culpeper County Jail	12	16	6	6	0	0	0	40	87
059	Fairfax Adult Detention Center	63	135	0	27	90	63	198	576	1387
061	Fauquier County Jail	1	19	9	20	2	1	3	55	115
067	Franklin County Jail	0	1	0	0	1	0	0	2	61
069	Northwestern Regional Jail	18	87	37	18	10	28	0	198	578
073	Gloucester County Jail	3	4	18	5	2	2	4	38	91
087	Henrico County Jail	16	50	5	6	6	20	0	103	1220
089	Henry County Jail	3	28	9	9	1	0	0	50	189
103	Lancaster Correctional Center	1	0	0	3	0	0	0	4	34
107	Loudoun County Adult Detention	9	27	5	6	3	42	35	127	390
119	Middle Peninsula Regional	13	31	6	2	1	0	25	78	201
121	Montgomery County Jail	3	15	67	5	4	0	6	100	93
131	Eastern Shore Regional Jail	1	0	1	1	1	1	1	6	103
135	Piedmont Regional Jail	5	12	3	3	2	2	4	31	446
137	Central Virginia Regional Jail	3	14	0	8	7	0	0	32	317
139	Page County Jail	0	11	55	25	10	0	5	106	88
141	Patrick County Jail	2	18	11	1	0	4	20	56	83
143	Pittsylvania County Jail	1	10	3	7	0	0	12	33	121
153	Pr. William/Manassas Regional	27	82	0	2	2	1	30	144	928

Jail Num	Jail Name	Schizophrenia or Delusional Disorder	Bipolar/Major Depressive	Mild Depression	Anxiety Disorder	PTSD	Other Mental Illness	Mentally Ill w/no Diagnosis	Total Mental Illness Population	Total Pop (SR/LR/ORD)
157	Rappahannock County Jail	0	1	0	2	0	0	0	3	23
161	Roanoke County/Salem Jail	3	19	3	4	1	4	0	34	140
163	Rockbridge Regional Jail	4	13	26	8	3	0	13	67	106
165	Rockingham-Harrisonburg Reg.	5	23	16	6	2	7	0	59	322
171	Shenandoah County Jail	2	3	1	2	0	1	3	12	101
175	Southampton County Jail	2	0	2	0	0	0	0	4	98
183	Sussex County Jail	0	1	0	1	0	0	4	6	54
193	Northern Neck Regional Jail	3	29	2	4	0	5	4	47	161
460	Pamunkey Regional Jail	6	14	14	26	3	0	0	63	341
465	Riverside Regional Jail	138	207	11	53	15	9	0	433	1312
470	Virginia Peninsula Regional	9	18	0	4	2	0	0	33	446
475	Hampton Roads Regional Jail	74	132	0	30	20	101	0	357	884
480	New River Regional Jail	7	77	0	20	7	22	25	158	920
485	Blue Ridge Regional Jail Authority	17	94	0	21	21	0	0	153	1177
490	Peumansend Creek Regional	0	1	7	5	1	0	0	14	319
491	Southside Regional Jail	3	4	0	0	12	14	1	34	133
492	Southwest Virginia Regional Jail	17	182	27	57	10	14	6	313	1677
493	Middle River Regional Jail	18	47	22	11	16	16	28	158	543
494	Western Virginia Regional Jail	7	67	20	19	9	35	58	215	693
495	Meherrin River Regional Jail	13	27	17	11	7	34	4	113	387
510	William G. Truesdale Adult Detention Center (Alex	22	36	4	1	4	37	12	116	246
520	Bristol City Jail	9	15	0	1	0	1	1	27	152
550	Chesapeake City Jail	77	125	0	34	0	0	0	236	1023
590	Danville City Jail	12	44	7	23	5	0	2	93	292
620	Western Tidewater Regional	22	3	42	3	3	2	0	75	587

Jail Num	Jail Name	Schizophrenia or Delusional Disorder	Bipolar/Major Depressive	Mild Depression	Anxiety Disorder	PTSD	Other Mental Illness	Mentally Ill w/no Diagnosis	Total Mental Illness Population	Total Pop (SR/LR/ORD)
630	Rappahannock Regional Jail	21	26	1	0	45	15	0	108	1175
690	Martinsville City Jail	5	3	0	4	0	4	0	16	149
700	Newport News City Jail	16	19	8	11	8	33	17	112	515
710	Norfolk City Jail	59	44	0	8	10	63	2	186	1476
730	Petersburg City Jail	0	0	0	0	0	0	0	0	207
740	Portsmouth City Jail	6	6	2	0	0	5	0	19	415
760	Richmond City Jail	52	41	14	17	26	44	1	195	1267
770	Roanoke City Jail	24	48	27	34	0	46	0	179	496
810	Virginia Beach Correction. Ctr	66	163	190	169	10	1	1	600	1352
	Total	947	2215	771	787	393	698	535	6346	26990

Appendix D: Most Serious Offense of Inmates with Mental Illness in Jails

Jail Num	Jail Name	Inmates Whose Most Serious Offense Reported as Felony	Inmates Whose Most Serious Offense Reported as Misdemeanor	Inmates Whose Most Serious Offense Reported as Drug	Inmates Whose Most Serious Offense Reported as Violent	Inmates Whose Most Serious Offense Reported as Non-Violent	Inmates Whose Most Serious Offense Reported as Ordinance	Total Inmates Reported
001	Accomack County Jail	0	0	0	0	0	0	0
003	Albemarle-Charlottesville Regional Jail	67	4	10	30	31	0	71
013	Arlington County Detention Fac	69	34	8	20	75	1	104
023	Botetourt County Jail	54	19	16	21	36	0	73
041	Chesterfield County Jail	35	27	15	6	41	0	62
047	Culpeper County Jail	0	41	0	1	40	0	41
059	Fairfax Adult Detention Center	414	180	9	189	396	0	594
061	Fauquier County Jail	14	26	23	8	9	16	56
067	Franklin County Jail	0	0	0	0	0	0	0
069	Northwestern Regional Jail	109	41	51	40	59	48	198
073	Gloucester County Jail	24	20	14	17	13	7	51
087	Henrico County Jail	84	19	7	39	57	0	103
089	Henry County Jail	45	11	6	21	29	0	56
103	Lancaster Correctional Center	8	0	3	3	2	0	8
107	Loudoun County Adult Detention	98	27	32	34	59	0	125
119	Middle Peninsula Regional	52	23	14	20	41	2	77
121	Montgomery County Jail	47	53	37	17	46	0	100
131	Eastern Shore Regional Jail	5	1	0	4	2	0	6
135	Piedmont Regional Jail	0	0	0	0	0	0	0
137	Central Virginia Regional Jail	7	18	6	10	9	6	31
139	Page County Jail	96	10	36	14	56	0	106
141	Patrick County Jail	42	10	10	16	26	10	62
143	Pittsylvania County Jail	31	10	1	15	25	0	41
153	Pr. William/Manassas Regional	121	22	41	63	39	0	143
157	Rappahannock County Jail	3	0	0	0	3	0	3
161	Roanoke County/Salem Jail	31	3	4	4	26	0	34
163	Rockbridge Regional Jail	34	11	12	0	33	22	67
165	Rockingham-Harrisonburg Reg.	42	17	14	17	28	0	59

Jail Num	Jail Name	Inmates Whose Most Serious Offense Reported as Felony	Inmates Whose Most Serious Offense Reported as Misdemeanor	Inmates Whose Most Serious Offense Reported as Drug	Inmates Whose Most Serious Offense Reported as Violent	Inmates Whose Most Serious Offense Reported as Non-Violent	Inmates Whose Most Serious Offense Reported as Ordinance	Total Inmates Reported
171	Shenandoah County Jail	0	12	10	0	2	7	19
175	Southampton County Jail	3	1	0	1	3	0	4
183	Sussex County Jail	7	0	1	4	2	1	8
193	Northern Neck Regional Jail	39	8	9	13	25	0	47
460	Pamunkey Regional Jail	48	15	13	27	23	0	63
465	Riverside Regional Jail	363	67	55	160	215	3	433
470	Virginia Peninsula Regional	18	2	2	9	9	13	33
475	Hampton Roads Regional Jail	319	36	94	167	94	2	357
480	New River Regional Jail	153	5	42	37	79	0	158
485	Blue Ridge Regional Jail Authority	69	63	42	28	62	19	151
490	Peumansend Creek Regional	13	1	0	0	14	0	14
491	Southside Regional Jail	25	9	2	12	20	0	34
492	Southwest Virginia Regional Jail	272	38	122	74	114	0	310
493	Middle River Regional Jail	143	16	31	62	66	1	160
494	Western Virginia Regional Jail	154	44	15	61	122	0	198
495	Meherrin River Regional Jail	94	19	23	29	61	0	113
510	William G. Truesdale Adult Detention Center (Alex	64	37	21	33	47	5	106
520	Bristol City Jail	17	10	10	4	13	0	27
550	Chesapeake City Jail	145	91	59	38	139	0	236
590	Danville City Jail	26	0	0	3	23	0	26
620	Western Tidewater Regional	51	16	8	29	30	8	75
630	Rappahannock Regional Jail	81	26	25	46	36	1	108
690	Martinsville City Jail	15	1	1	10	5	0	16
700	Newport News City Jail	57	51	6	41	61	3	111
710	Norfolk City Jail	128	57	10	67	108	0	185
730	Petersburg City Jail	0	0	0	0	0	0	0
740	Portsmouth City Jail	9	13	0	8	14	0	22
760	Richmond City Jail	170	29	47	86	66	0	199
770	Roanoke City Jail	137	49	35	47	104	0	186

Jail Num	Jail Name	Inmates Whose Most Serious Offense Reported as Felony	Inmates Whose Most Serious Offense Reported as Misdemeanor	Inmates Whose Most Serious Offense Reported as Drug	Inmates Whose Most Serious Offense Reported as Violent	Inmates Whose Most Serious Offense Reported as Non-Violent	Inmates Whose Most Serious Offense Reported as Ordinance	Total Inmates Reported
810	Virginia Beach Correction. Ctr	225	348	212	141	220	37	610
	Totals	4377	1691	1264	1846	2958	212	6280

Appendix E: Hours of Mental Health Treatment Services Provided

Jail Num	Jail Name	Hours of Psychiatric Consultation	Hrs of General Practice MD devoted to MH	Hrs of Trtmt Prov by Jail MH Staff	Hrs of Trtmt Prov by CSB	Hrs of Trtmt Prov by Priv Cont	Total Hours of MH Treatment
001	Accomack County Jail	12	0	10	2	0	24
003	Albemarle-Charlottesville Regional Jail	59	0	20	0	0	79
013	Arlington County Detention Fac	98	2	0	0	520	620
023	Botetourt County Jail	9	0	37	0	0	46
041	Chesterfield County Jail	32	10	0	15	0	57
047	Culpeper County Jail	5	0	0	2	3	10
059	Fairfax Adult Detention Center	0	0	0	1301	0	1301
061	Fauquier County Jail	8	4	4	5	2	23
069	Northwestern Regional Jail	13	3	231	4	18	269
073	Gloucester County Jail	0	1	20	25	0	46
087	Henrico County Jail	160	0	0	1172	2232	3564
089	Henry County Jail	23	0	0	23	0	46
103	Lancaster Correctional Center	0	30	30	100	300	460
107	Loudoun County Adult Detention	0	0	448	0	0	448
119	Middle Peninsula Regional	8	12	320	304	14	658
121	Montgomery County Jail	3	0	0	4	6	13
139	Page County Jail	2	2	8	0	8	20
141	Patrick County Jail	0	2	60	3	0	65
143	Pittsylvania County Jail	0	0	33	0	20	53
153	Pr. William/Manassas Regional	16	2	200	357	0	575
157	Rappahannock County Jail	0	2	0	1	0	3
161	Roanoke County/Salem Jail	12	0	7	82	0	101
165	Rockingham-Harrisonburg Reg.	24	0	0	24	0	48
193	Northern Neck Regional Jail	2	2	0	140	0	144
460	Pamunkey Regional Jail	10	1	0	18	0	29
465	Riverside Regional Jail	80	2	0	0	460	542
470	Virginia Peninsula Regional	16	0	0	24	0	40

Jail Num	Jail Name	Hours of Psychiatric Consultation	Hrs of General Practice MD devoted to MH	Hrs of Trtmt Prov by Jail MH Staff	Hrs of Trtmt Prov by CSB	Hrs of Trtmt Prov by Priv Cont	Total Hours of MH Treatment
475	Hampton Roads Regional Jail	33	0	0	0	520	553
480	New River Regional Jail	4	10	19	21	4	58
485	Blue Ridge Regional Jail Authority	34	0	0	40	102	176
490	Peumansend Creek Regional	0	2	0	0	0	2
491	Southside Regional Jail	3	3	0	0	220	226
492	Southwest Virginia Regional Jail	51	12	122	0	240	425
493	Middle River Regional Jail	17	4	0	96	0	117
494	Western Virginia Regional Jail	40	0	0	3	304	347
495	Meherrin River Regional Jail	16	0	0	0	65	81
510	William G. Truesdale Adult Detention Center (Alex	76	24	999	0	0	1099
520	Bristol City Jail	0	4	6	0	0	10
550	Chesapeake City Jail	91	0	0	30	90	211
590	Danville City Jail	0	4	0	8	0	12
620	Western Tidewater Regional	16	8	0	352	0	376
630	Rappahannock Regional Jail	16	4	0	188	0	208
690	Martinsville City Jail	0	0	13	9	0	22
700	Newport News City Jail	20	21	0	1142	186	1369
710	Norfolk City Jail	40	0	0	8	340	388
730	Petersburg City Jail	0	0	0	0	0	0
740	Portsmouth City Jail	14	0	80	0	0	94
760	Richmond City Jail	60	0	0	72	288	420
770	Roanoke City Jail	52	41	0	0	184	277
810	Virginia Beach Correction. Ctr	60	0	0	360	618	1038
	Totals	1235	212	2667	5935	6744	16793

Appendix F: Type of Mental Health Treatment Services Provided

Jail Number	Jail Name	Inmates Receiving Individual Counseling	Inmates Receiving Group Counseling	Inmates Receiving Group Substance Abuse Treatment	Inmates Receiving Other Individual or Group MH Treatment	Total Number of Inmates Receiving Treatment
001	Accomack County Jail	17	0	0	1	18
003	Albemarle-Charlottesville Regional Jail	5	0	30	0	35
013	Arlington County Detention Fac	17	42	34	0	93
023	Botetourt County Jail	12	0	18	0	30
041	Chesterfield County Jail	0	0	47	0	47
047	Culpeper County Jail	5	0	0	0	5
059	Fairfax Adult Detention Center	0	0	0	173	173
061	Fauquier County Jail	0	30	10	0	40
069	Northwestern Regional Jail	284	38	0	0	322
073	Gloucester County Jail	25	0	19	25	69
087	Henrico County Jail	451	0	160	0	611
089	Henry County Jail	32	0	0	0	32
103	Lancaster Correctional Center	8	0	5	0	13
107	Loudoun County Adult Detention	0	11	45	114	170
119	Middle Peninsula Regional	77	0	3	20	100
121	Montgomery County Jail	4	0	34	0	38
135	Piedmont Regional Jail	40	0	0	0	40
137	Central Virginia Regional Jail	28	0	0	0	28
139	Page County Jail	6	40	40	40	126
141	Patrick County Jail	1	0	0	0	1
143	Pittsylvania County Jail	56	0	23	48	127
153	Pr. William/Manassas Regional	165	0	100	100	365
157	Rappahannock County Jail	0	0	0	1	1
161	Roanoke County/Salem Jail	4	0	20	0	24
163	Rockbridge Regional Jail	4	0	18	0	22
165	Rockingham-Harrisonburg Reg.	0	36	75	0	111
171	Shenandoah County Jail	0	22	36	0	58
175	Southampton County Jail	5	0	0	0	5

Jail Number	Jail Name	Inmates Receiving Individual Counseling	Inmates Receiving Group Counseling	Inmates Receiving Group Substance Abuse Treatment	Inmates Receiving Other Individual or Group MH Treatment	Total Number of Inmates Receiving Treatment
183	Sussex County Jail	1	0	15	0	16
193	Northern Neck Regional Jail	20	20	61	5	106
460	Pamunkey Regional Jail	16	0	0	0	16
465	Riverside Regional Jail	0	0	0	250	250
470	Virginia Peninsula Regional	0	0	11	0	11
475	Hampton Roads Regional Jail	0	0	50	0	50
480	New River Regional Jail	29	0	28	2	59
485	Blue Ridge Regional Jail Authority	412	12	0	20	444
490	Peumansend Creek Regional	0	0	0	0	0
491	Southside Regional Jail	30	0	49	49	128
492	Southwest Virginia Regional Jail	199	5	8	6	218
493	Middle River Regional Jail	46	40	0	0	86
494	Western Virginia Regional Jail	387	0	21	0	408
495	Meherrin River Regional Jail	116	0	0	161	277
510	William G. Truesdale Adult Detention Center (Alex	152	0	42	0	194
520	Bristol City Jail	12	0	0	0	12
550	Chesapeake City Jail	800	0	52	0	852
590	Danville City Jail	8	0	0	0	8
620	Western Tidewater Regional	94	214	149	0	457
630	Rappahannock Regional Jail	110	0	183	0	293
690	Martinsville City Jail	8	0	18	0	26
700	Newport News City Jail	322	25	30	19	396
710	Norfolk City Jail	0	10	39	680	729
730	Petersburg City Jail	0	0	10	0	10
740	Portsmouth City Jail	2	0	0	0	2
760	Richmond City Jail	36	0	0	507	543
770	Roanoke City Jail	250	0	32	40	322
810	Virginia Beach Correction. Ctr	0	0	160	321	481
	Totals	4296	545	1675	2582	9098

Appendix G: Mental Health Medication Dispensed

Jail Number	Jail Name	Inmates Receiving AntiPsychotic Meds	Inmates Receiving Mood Stabilizer Meds	Inmate Receiving AntiDepressant Meds	Inmates Receiving Anti Anxiety Meds	Total Medications Dispensed	Inmates Refused Meds
001	Accomack County Jail	9	5	11	4	29	3
003	Albemarle-Charlottesville Regional Jail	30	18	81	4	133	0
013	Arlington County Detention Fac	34	10	62	6	112	8
023	Botetourt County Jail	6	20	21	13	60	0
041	Chesterfield County Jail	3	7	28	18	56	0
047	Culpeper County Jail	8	5	10	0	23	2
059	Fairfax Adult Detention Center	74	33	117	15	239	14
061	Fauquier County Jail	24	16	12	5	57	2
067	Franklin County Jail	0	0	0	0	0	0
069	Northwestern Regional Jail	76	51	119	51	297	4
073	Gloucester County Jail	7	5	15	1	28	0
087	Henrico County Jail	49	40	163	111	363	26
089	Henry County Jail	24	12	27	21	84	1
103	Lancaster Correctional Center	5	0	3	0	8	0
107	Loudoun County Adult Detention	22	17	14	0	53	0
119	Middle Peninsula Regional	15	15	45	18	93	5
121	Montgomery County Jail	5	5	26	19	55	1
131	Eastern Shore Regional Jail	0	2	4	0	6	0
135	Piedmont Regional Jail	36	23	25	5	89	2
137	Central Virginia Regional Jail	24	9	101	0	134	5
139	Page County Jail	3	6	4	1	14	5
141	Patrick County Jail	25	6	27	2	60	1
143	Pittsylvania County Jail	2	2	7	0	11	1
153	Pr. William/Manassas Regional	67	27	72	11	177	15
157	Rappahannock County Jail	0	1	0	2	3	0
161	Roanoke County/Salem Jail	9	24	21	2	56	0
163	Rockbridge Regional Jail	21	7	42	14	84	1

Jail Number	Jail Name	Inmates Receiving AntiPsychotic Meds	Inmates Receiving Mood Stabilizer Meds	Inmate Receiving AntiDepressant Meds	Inmates Receiving Anti Anxiety Meds	Total Medications Dispensed	Inmates Refused Meds
165	Rockingham-Harrisonburg Reg.	19	22	28	9	78	1
171	Shenandoah County Jail	12	5	7	0	24	0
175	Southampton County Jail	2	1	4	0	7	1
183	Sussex County Jail	0	6	2	1	9	0
193	Northern Neck Regional Jail	8	5	23	6	42	2
460	Pamunkey Regional Jail	20	7	57	6	90	1
465	Riverside Regional Jail	179	118	194	125	616	13
470	Virginia Peninsula Regional	23	10	14	0	47	2
475	Hampton Roads Regional Jail	309	118	312	5	744	82
480	New River Regional Jail	13	8	13	0	34	30
485	Blue Ridge Regional Jail Authority	172	122	409	60	763	19
490	Peumansend Creek Regional	1	1	12	0	14	0
491	Southside Regional Jail	21	3	7	0	31	0
492	Southwest Virginia Regional Jail	145	84	233	94	556	2
493	Middle River Regional Jail	843	24	118	35	1020	3
494	Western Virginia Regional Jail	45	52	218	21	336	36
495	Meherrin River Regional Jail	64	39	64	2	169	3
510	William G. Truesdale Adult Detention Center (Alex	28	12	27	15	82	13
520	Bristol City Jail	7	4	15	0	26	0
550	Chesapeake City Jail	66	68	74	0	208	4
590	Danville City Jail	32	24	75	0	131	1
620	Western Tidewater Regional	21	3	50	3	77	3
630	Rappahannock Regional Jail	83	51	90	28	252	20
690	Martinsville City Jail	10	5	6	1	22	0
700	Newport News City Jail	36	33	62	125	256	38
710	Norfolk City Jail	99	49	95	64	307	17
730	Petersburg City Jail	0	0	0	0	0	0
740	Portsmouth City Jail	8	7	18	9	42	2
760	Richmond City Jail	100	47	143	49	339	7

Jail Number	Jail Name	Inmates Receiving AntiPsychotic Meds	Inmates Receiving Mood Stabilizer Meds	Inmate Receiving AntiDepressant Meds	Inmates Receiving Anti Anxiety Meds	Total Medications Dispensed	Inmates Refused Meds
770	Roanoke City Jail	49	48	155	22	274	4
810	Virginia Beach Correction. Ctr	83	103	74	136	396	26
	Totals	3076	1445	3656	1139	9316	426

Appendix H: Mental Health Treatment Expenditures

Jail Number	Jail Name	FY13 Reported Cost of Medications	FY13 Reported Cost of Mental Health Services	Total FY13 Reported Treatment Costs
001	Accomack County Jail	\$1,700	\$27,400	\$29,100
003	Albemarle-Charlottesville Regional Jail	\$89,251	\$214,960	\$304,211
013	Arlington County Detention Fac	\$59,784	\$502,566	\$562,350
023	Botetourt County Jail	\$14,143	\$9,500	\$23,643
041	Chesterfield County Jail	\$32,891	\$48,500	\$81,391
047	Culpeper County Jail	\$5,616	\$2,000	\$7,616
059	Fairfax Adult Detention Center	\$85,856	\$792,750	\$878,606
061	Fauquier County Jail	\$9,300	\$6,000	\$15,300
067	Franklin County Jail	\$0	\$0	\$0
069	Northwestern Regional Jail	\$72,596	\$191,618	\$264,214
073	Gloucester County Jail	\$3,816	\$31,000	\$34,816
087	Henrico County Jail	\$223,754	\$489,430	\$713,184
089	Henry County Jail	\$1,153	\$3,000	\$4,153
103	Lancaster Correctional Center	\$2,000	\$2,000	\$4,000
107	Loudoun County Adult Detention	\$8,100	\$389,810	\$397,910
119	Middle Peninsula Regional	\$56,436	\$204,934	\$261,370
121	Montgomery County Jail	\$6,500	\$14,000	\$20,500
131	Eastern Shore Regional Jail	\$6,000	\$18,000	\$24,000
135	Piedmont Regional Jail	\$147,000	\$64,001	\$211,001
137	Central Virginia Regional Jail	\$44,925	\$9,460	\$54,385
139	Page County Jail	\$0	\$86,289	\$86,289
141	Patrick County Jail	\$7,200	\$6,720	\$13,920
143	Pittsylvania County Jail	\$300	\$500	\$800
153	Pr. William/Manassas Regional	\$91,189	\$314,344	\$405,533
157	Rappahannock County Jail	\$1,000	\$1,000	\$2,000
161	Roanoke County/Salem Jail	\$7,188	\$36,528	\$43,716
163	Rockbridge Regional Jail	\$10,763	\$139,804	\$150,567
165	Rockingham-Harrisonburg Reg.	\$44,592	\$11,500	\$56,092
175	Southampton County Jail	\$3,029	\$0	\$3,029
183	Sussex County Jail	\$4,600	\$2,000	\$6,600
193	Northern Neck Regional Jail	\$33,263	\$75,000	\$108,263
460	Pamunkey Regional Jail	\$54,939	\$2,083	\$57,022
465	Riverside Regional Jail	\$104,506	\$264,035	\$368,541
470	Virginia Peninsula Regional	\$136,437	\$17,949	\$154,386
475	Hampton Roads Regional Jail	\$129,903	\$125,200	\$255,103
480	New River Regional Jail	\$22,563	\$87,500	\$110,063

Jail Number	Jail Name	FY13 Reported Cost of Medications	FY13 Reported Cost of Mental Health Services	Total FY13 Reported Treatment Costs
485	Blue Ridge Regional Jail Authority	\$210,322	\$349,091	\$559,413
490	Peumansend Creek Regional	\$710	\$4,052	\$4,762
491	Southside Regional Jail	\$18,000	\$66,900	\$84,900
492	Southwest Virginia Regional Jail	\$307,104	\$259,833	\$566,937
493	Middle River Regional Jail	\$0	\$375,763	\$375,763
494	Western Virginia Regional Jail	\$97,000	\$157,171	\$254,171
495	Meherrin River Regional Jail	\$15,116	\$69,985	\$85,101
510	William G. Truesdale Adult Detention Center (Alex	\$116,081	\$974,188	\$1,090,269
520	Bristol City Jail	\$6,084	\$7,500	\$13,584
550	Chesapeake City Jail	\$33,600	\$236,364	\$269,964
590	Danville City Jail	\$30,000	\$3,000	\$33,000
620	Western Tidewater Regional	\$45,000	\$213,720	\$258,720
630	Rappahannock Regional Jail	\$73,142	\$271,739	\$344,881
700	Newport News City Jail	\$17,368	\$137,886	\$155,254
710	Norfolk City Jail	\$37,500	\$210,000	\$247,500
730	Petersburg City Jail	\$0	\$0	\$0
740	Portsmouth City Jail	\$5,083	\$33,256	\$38,339
760	Richmond City Jail	\$47,485	\$57,485	\$104,970
770	Roanoke City Jail	\$47,122	\$107,140	\$154,262
810	Virginia Beach Correction. Ctr	\$116,998	\$245,620	\$362,618
	Totals	\$2,746,008	\$7,972,074	\$10,718,082

Appendix I: Incidents of Inmate Aggression

Jail Number	Jail Name	Incidents of Inmate Aggression twd Other Inmates	Incidents of Inmate Aggression twd Jail Staff	MI Perpetrators	MI Victims
001	Accomack County Jail	0	1	1	0
003	Albemarle-Charlottesville Regional Jail	1	0	0	0
013	Arlington County Detention Fac	1	1	1	1
023	Botetourt County Jail	0	1	1	0
041	Chesterfield County Jail	2	1	0	0
047	Culpeper County Jail	5	5	5	0
059	Fairfax Adult Detention Center	0	0	0	0
061	Fauquier County Jail	0	0	0	0
067	Franklin County Jail	0	0	0	0
069	Northwestern Regional Jail	5	0	1	1
073	Gloucester County Jail	0	0	0	0
087	Henrico County Jail	17	15	11	6
089	Henry County Jail	3	0	2	1
103	Lancaster Correctional Center	0	0	0	0
107	Loudoun County Adult Detention	3	1	0	0
119	Middle Peninsula Regional	4	5	5	2
121	Montgomery County Jail	0	0	0	0
131	Eastern Shore Regional Jail	0	0	0	0
135	Piedmont Regional Jail	12	1	1	0
137	Central Virginia Regional Jail	0	0	0	0
139	Page County Jail	2	0	0	0
141	Patrick County Jail	0	0	0	0
143	Pittsylvania County Jail	0	0	0	0
153	Pr. William/Manassas Regional	9	1	1	0
157	Rappahannock County Jail	0	0	0	0
161	Roanoke County/Salem Jail	1	0	0	1
163	Rockbridge Regional Jail	0	0	0	0
165	Rockingham-Harrisonburg Reg.	4	2	2	1
171	Shenandoah County Jail	0	0	0	0
175	Southampton County Jail	0	0	0	0
183	Sussex County Jail	0	0	0	0
193	Northern Neck Regional Jail	4	0	0	0
460	Pamunkey Regional Jail	2	0	0	0
465	Riverside Regional Jail	7	2	10	0
470	Virginia Peninsula Regional	1	0	0	2
475	Hampton Roads Regional Jail	2	2	4	2
480	New River Regional Jail	2	9	13	0

Jail Number	Jail Name	Incidents of Inmate Aggression twd Other Inmates	Incidents of Inmate Aggression twd Jail Staff	MI Perpetrators	MI Victims
485	Blue Ridge Regional Jail Authority	6	2	2	1
490	Peumansend Creek Regional	1	0	0	0
491	Southside Regional Jail	5	2	2	0
492	Southwest Virginia Regional Jail	15	6	9	5
493	Middle River Regional Jail	6	1	0	3
494	Western Virginia Regional Jail	8	0	1	3
495	Meherrin River Regional Jail	4	0	0	0
510	William G. Truesdale Adult Detention Center (Alexandria)	3	0	0	0
520	Bristol City Jail	2	0	0	0
550	Chesapeake City Jail	9	2	2	0
590	Danville City Jail	4	7	1	0
620	Western Tidewater Regional	1	2	2	0
630	Rappahannock Regional Jail	22	6	0	0
690	Martinsville City Jail	1	0	1	0
700	Newport News City Jail	7	0	3	0
710	Norfolk City Jail	79	3	4	2
730	Petersburg City Jail	0	0	0	0
740	Portsmouth City Jail	8	1	3	2
760	Richmond City Jail	7	3	0	0
770	Roanoke City Jail	12	8	3	0
810	Virginia Beach Correction. Ctr	0	0	0	0
	Totals	287	90	91	33