



# COMMONWEALTH of VIRGINIA

James F. Lane, Ed.D.  
Superintendent of Public Instruction

DEPARTMENT OF EDUCATION  
P.O. BOX 2120  
RICHMOND, VIRGINIA 23218-2120

Office: (804) 225-2057  
Fax: (804) 371-2099

January 13, 2021

Division of Legislative Automated Systems (DLAS)  
910 Capitol Square  
General Assembly Building, Suite 660  
Richmond, Virginia 23219

ATTN: Legislative Documents and Reports Processing

To Whom It May Concern:

Pursuant to Section 22.1-97, *Code of Virginia*, I am pleased to transmit the 2020 Required Local Effort and Required Local Match report for fiscal years 2020 and 2021 prepared by the Virginia Department of Education. The title of this report is "Actual Fiscal Year 2020 Required Local Effort and Required Local Match; Certification of Budgeted Fiscal Year 2021 Required Local Effort and Required Local Match."

If you have questions or require additional information relative to this transmittal, please contact me or Edward Lanza, Budget Director, at (804) 225-2025.

Sincerely,

A handwritten signature in black ink that reads "James F. Lane".

James F. Lane

JMF/eml

Enclosure

c: The Honorable Atif Qarni

## **DLAS Document Summary**

### **DLAS Document Summary**

Actual Fiscal Year 2020 Required Local Effort and Required Local Match; Certification of Budgeted Fiscal Year 2021 Required Local Effort and Required Local Match

#### **Author**

Virginia Department of Education

#### **Enabling Authority**

Section 22.1-97, *Code of Virginia*

#### **Preface**

Section 22.1-97, *Code of Virginia*, directs the Superintendent of Public Instruction to provide a report annually to the House Committees on Appropriations and Education and the Senate Committees on Finance and Education and Health on the degree to which each school division has met, failed to meet, or surpassed its required local expenditure in support of the Standards of Quality (SOQ).

Virginia Department of Education budget staff prepared the report based on Annual School Report Financial Section (ASRFIN) data submitted by school divisions for fiscal year 2020, and certifications of budgeted local expenditures submitted by school divisions for fiscal year 2021.

#### **Executive Summary**

Pursuant to the requirements of Section 22.1-97, *Code of Virginia*, the Virginia Department of Education collected data from school divisions on the actual local funding effort in support of the Standards of Quality for fiscal year 2020, through the 2019-2020 Annual School Report Financial Section (ASRFIN). School divisions were also required to certify that local funds were at the required level in support of the Standards of Quality for fiscal year 2021. All school divisions met the requirement as of the time of this report.

This report provides the results of calculations made to ensure that each school division has expended sufficient local funds to support its required local effort. The purpose of required local effort is to ensure that each school division has sufficient local operational expenditures to support its local share of the cost of the Standards of Quality. Fiscal year 2020 calculations are based on actual local operational expenditures.

Item 136, Chapter 1283, 2020 Virginia Acts of Assembly waived all required local effort and required local match obligations for fiscal year 2020.

Item 145, Chapter 56, 2020 Special Session I Acts of Assembly, requires divisions to certify “that sufficient local funds have been budgeted to meet all state required local effort and required local match amounts.” All school divisions certified that they have budgeted local operational funds sufficient to meet budgeted required local effort for fiscal year 2021. School divisions whose local appropriations for fiscal year 2021 are only slightly in excess of the amount required to maintain local effort for the Standards of Quality have been advised to review their average

daily membership on a monthly basis during the fiscal year to ensure sufficient local appropriations are available based on current enrollment levels.

For fiscal year 2021, all school divisions submitted the required information to certify their budgeted required local match for Incentive and Lottery accounts (i.e., At-Risk, Virginia Preschool Initiative, K-3 Primary Class Size Reduction, Math/Reading Instructional Specialist Initiative, and Early Reading Specialists Initiative). All school divisions certified that they have budgeted local operational funds sufficient to meet budgeted required local match for all Incentive and Lottery-funded accounts in which they have elected to participate in fiscal year 2021.

**Table of Contents**

---

**Actual Fiscal Year 2020 Required Local Effort (RLE) for SOQ**

Fiscal Year 2020 Statewide Summary.....Page 4  
Fiscal Year 2020 Division Data.....Page 5

**Budgeted Fiscal Year 2020 Required Local Effort (RLE) for SOQ**

Fiscal Year 2021 Statewide Summary.....Page 11  
Fiscal Year 2021 Division Data.....Page 12

**Actual Fiscal Year 2020 Required Local Match (RLM) for Incentive and Lottery Accounts**

Fiscal Year 2020 Statewide Summary.....Page 17  
Fiscal Year 2020 Division Data.....Page 18

**Budgeted Fiscal Year 2021 Required Local Match (RLM) for Incentive and Lottery Accounts**

Fiscal Year 2021 Statewide Summary.....Page 24  
Fiscal Year 2021 Division Data.....Page 25

**School Division Participation in Optional Programs with Local Match Requirements**

Fiscal Year 2021 Statewide Summary.....Page 30

**Appendix A**

Legislative mandate directing this report.....Page 31

**Appendix B**

Legislative mandate directing RLE and RLM data collection.....Page 33

## Fiscal Year 2020 Statewide Summary

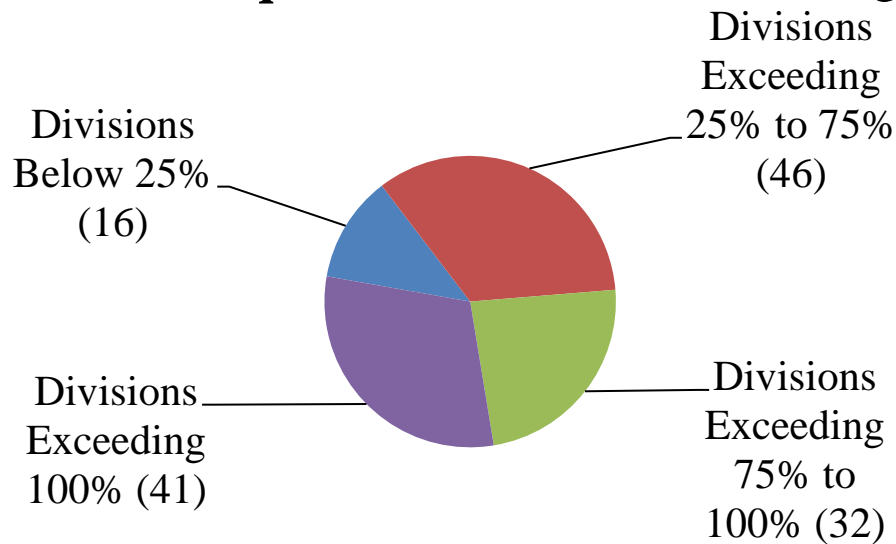
---

### Actual Required Local Effort for the Standards of Quality *Fiscal Year 2020*

134 of 135 school divisions exceeded required local effort for fiscal year 2020. The range of local support of the required amount is:

- Low – Scott – 2.50% below the required amount
- High – West Point – 233.75% in excess of the required amount
- The average local operational expenditure in excess of the required level for FY 2020; 82.54%

### **Distribution - Percent of FY20 Actual Local Expenditures for Operations Above Required Local Effort for SOQ**



**FY 2020 Actual Required Local Effort (RLE) for the Standards of Quality  
Compared to Actual Local Expenditures for Operations**

RLE Based on Chapter 1283, 2020 Virginia Acts of Assembly, and  
Final March 31, 2020, Average Daily Membership (ADM)

<b>Div. Num.</b>	<b>Division Name</b>	<b>FY 2020 Required Local Effort<sup>1</sup></b>	<b>FY 2020 Actual Local Expenditures for Operations<sup>2</sup></b>	<b>FY 2020 Actual Local Expenditures for Operations Above RLE</b>	<b>Percent of FY 2020 Actual Local Expenditures for Operations Above RLE</b>
001	ACCOMACK	12,831,871	16,924,741	4,092,870	31.90%
002	ALBEMARLE	61,991,626	139,951,064	77,959,438	125.76%
003	ALLEGHANY	3,801,929	9,433,826	5,631,897	148.13%
004	AMELIA	3,813,625	5,326,737	1,513,112	39.68%
005	AMHERST	8,505,797	13,664,111	5,158,314	60.64%
006	APPOMATTOX	4,508,850	5,520,291	1,011,441	22.43%
007	ARLINGTON	157,390,638	445,556,685	288,166,047	183.09%
008	AUGUSTA	21,876,065	44,087,166	22,211,101	101.53%
009	BATH	3,351,406	7,283,348	3,931,942	117.32%
010	BEDFORD	18,315,693	36,568,909	18,253,216	99.66%
011	BLAND	1,407,829	2,669,961	1,262,132	89.65%
012	BOTETOURT	11,512,376	22,890,166	11,377,790	98.83%
013	BRUNSWICK	4,157,821	5,893,388	1,735,567	41.74%
014	BUCHANAN	5,574,865	10,579,599	5,004,734	89.77%
015	BUCKINGHAM	5,192,388	5,828,638	636,250	12.25%
016	CAMPBELL	13,723,788	26,155,939	12,432,151	90.59%
017	CAROLINE	9,448,121	13,622,643	4,174,522	44.18%
018	CARROLL	6,583,663	9,967,756	3,384,093	51.40%
019	CHARLES CITY	2,262,261	5,530,559	3,268,298	144.47%
020	CHARLOTTE	3,000,607	4,600,750	1,600,143	53.33%
021	CHESTERFIELD	138,984,213	236,210,460	97,226,247	69.95%
022	CLARKE	7,122,549	13,377,843	6,255,294	87.82%
023	CRAIG	1,427,385	1,698,066	270,681	18.96%
024	CULPEPER	19,633,373	30,186,471	10,553,098	53.75%
025	CUMBERLAND	2,533,952	3,463,781	929,829	36.69%

**FY 2020 Actual Required Local Effort (RLE) for the Standards of Quality  
Compared to Actual Local Expenditures for Operations**

RLE Based on Chapter 1283, 2020 Virginia Acts of Assembly, and  
Final March 31, 2020, Average Daily Membership (ADM)

<b>Div. Num.</b>	<b>Division Name</b>	<b>FY 2020 Required Local Effort<sup>1</sup></b>	<b>FY 2020 Actual Local Expenditures for Operations<sup>2</sup></b>	<b>FY 2020 Actual Local Expenditures for Operations Above RLE</b>	<b>Percent of FY 2020 Actual Local Expenditures for Operations Above RLE</b>
026	DICKENSON	3,582,581	5,916,816	2,334,235	65.16%
027	DINWIDDIE	8,297,131	14,859,385	6,562,254	79.09%
028	ESSEX	4,017,972	6,929,166	2,911,194	72.45%
029	FAIRFAX	903,046,040	2,103,388,810	1,200,342,770	132.92%
030	FAUQUIER	46,613,671	91,730,677	45,117,006	96.79%
031	FLOYD	4,065,858	6,897,429	2,831,571	69.64%
032	FLUVANNA	8,645,728	16,308,221	7,662,493	88.63%
033	FRANKLIN	17,463,237	30,720,915	13,257,678	75.92%
034	FREDERICK	36,415,491	86,097,885	49,682,394	136.43%
035	GILES	4,362,324	7,541,611	3,179,287	72.88%
036	GLOUCESTER	12,909,447	27,200,075	14,290,628	110.70%
037	GOOCHLAND	13,455,601	22,680,609	9,225,008	68.56%
038	GRAYSON	3,919,186	5,747,208	1,828,022	46.64%
039	GREENE	6,390,571	12,628,223	6,237,652	97.61%
040	GREENSVILLE	1,943,021	3,038,445	1,095,424	56.38%
041	HALIFAX	10,471,935	11,660,625	1,188,690	11.35%
042	HANOVER	50,729,396	83,868,135	33,138,739	65.32%
043	HENRICO	137,737,360	256,550,735	118,813,375	86.26%
044	HENRY	10,489,617	10,845,406	355,789	3.39%
045	HIGHLAND	1,863,616	2,072,602	208,986	11.21%
046	ISLE OF WIGHT	14,721,502	24,970,198	10,248,696	69.62%
047	JAMES CITY	37,711,006	79,008,646	41,297,640	109.51%
048	KING GEORGE	10,817,155	16,298,980	5,481,825	50.68%
049	KING QUEEN	2,571,599	4,187,662	1,616,063	62.84%
050	KING WILLIAM	5,175,777	8,689,304	3,513,527	67.88%

**FY 2020 Actual Required Local Effort (RLE) for the Standards of Quality  
Compared to Actual Local Expenditures for Operations**

RLE Based on Chapter 1283, 2020 Virginia Acts of Assembly, and  
Final March 31, 2020, Average Daily Membership (ADM)

<b>Div. Num.</b>	<b>Division Name</b>	<b>FY 2020 Required Local Effort<sup>1</sup></b>	<b>FY 2020 Actual Local Expenditures for Operations<sup>2</sup></b>	<b>FY 2020 Actual Local Expenditures for Operations Above RLE</b>	<b>Percent of FY 2020 Actual Local Expenditures for Operations Above RLE</b>
051	LANCASTER	5,753,762	11,259,918	5,506,156	95.70%
052	LEE	4,101,272	5,626,360	1,525,088	37.19%
053	LOUDOUN	311,231,684	911,787,377	600,555,693	192.96%
054	LOUISA	17,805,711	36,215,719	18,410,008	103.39%
055	LUNENBURG	2,864,120	3,124,891	260,771	9.10%
056	MADISON	5,116,320	9,370,776	4,254,456	83.15%
057	MATHEWS	3,866,595	8,313,487	4,446,892	115.01%
058	MECKLENBURG	10,410,713	31,575,185	21,164,472	203.30%
059	MIDDLESEX	4,902,767	9,138,376	4,235,609	86.39%
060	MONTGOMERY	25,372,386	51,498,811	26,126,425	102.97%
062	NELSON	5,942,727	14,679,128	8,736,401	147.01%
063	NEW KENT	9,023,913	13,511,651	4,487,738	49.73%
065	NORTHAMPTON	4,900,913	7,393,494	2,492,581	50.86%
066	NORTHUMBERLAND	6,387,645	11,880,823	5,493,178	86.00%
067	NOTTOWAY	3,330,615	3,904,401	573,786	17.23%
068	ORANGE	13,113,512	20,312,996	7,199,484	54.90%
069	PAGE	6,423,147	9,235,043	2,811,896	43.78%
070	PATRICK	4,327,971	4,966,897	638,926	14.76%
071	PITTSYLVANIA	13,705,848	17,741,358	4,035,510	29.44%
072	POWHATAN	11,925,150	22,068,238	10,143,088	85.06%
073	PRINCE EDWARD	4,882,843	6,715,447	1,832,604	37.53%
074	PRINCE GEORGE	9,916,755	15,432,809	5,516,054	55.62%
075	PRINCE WILLIAM	235,210,035	480,504,847	245,294,812	104.29%
077	PULASKI	8,725,351	14,663,828	5,938,477	68.06%
078	RAPPAHANNOCK	3,889,632	9,360,223	5,470,591	140.65%
079	RICHMOND	2,837,308	4,381,385	1,544,077	54.42%



**FY 2020 Actual Required Local Effort (RLE) for the Standards of Quality  
Compared to Actual Local Expenditures for Operations**

RLE Based on Chapter 1283, 2020 Virginia Acts of Assembly, and  
Final March 31, 2020, Average Daily Membership (ADM)

<b>Div. Num.</b>	<b>Division Name</b>	<b>FY 2020 Required Local Effort<sup>1</sup></b>	<b>FY 2020 Actual Local Expenditures for Operations<sup>2</sup></b>	<b>FY 2020 Actual Local Expenditures for Operations Above RLE</b>	<b>Percent of FY 2020 Actual Local Expenditures for Operations Above RLE</b>
080	ROANOKE	32,712,469	66,018,901	33,306,432	101.82%
081	ROCKBRIDGE	8,791,891	13,836,852	5,044,961	57.38%
082	ROCKINGHAM	26,631,285	60,037,107	33,405,822	125.44%
083	RUSSELL	5,729,519	6,574,781	845,262	14.75%
084	SCOTT	4,958,637	4,834,512	(124,125)	(2.50%)
085	SHENANDOAH	14,875,246	28,385,668	13,510,422	90.82%
086	SMYTH	6,192,362	7,720,698	1,528,336	24.68%
087	SOUTHAMPTON	5,595,571	10,662,581	5,067,010	90.55%
088	SPOTSYLVANIA	57,545,613	103,391,585	45,845,972	79.67%
089	STAFFORD	65,020,522	119,212,710	54,192,188	83.35%
090	SURRY	4,375,732	11,789,064	7,413,332	169.42%
091	SUSSEX	2,951,189	8,122,081	5,170,892	175.21%
092	TAZEWELL	9,507,908	10,907,396	1,399,488	14.72%
093	WARREN	14,535,417	23,484,151	8,948,734	61.57%
094	WASHINGTON	15,039,769	25,408,809	10,369,040	68.94%
095	WESTMORELAND	7,472,053	8,057,336	585,283	7.83%
096	WISE	8,731,401	11,397,741	2,666,340	30.54%
097	WYTHE	7,960,136	11,975,480	4,015,344	50.44%
098	YORK	32,070,563	55,601,905	23,531,342	73.37%
101	ALEXANDRIA	88,837,737	220,673,064	131,835,327	148.40%
102	BRISTOL	4,291,401	5,381,577	1,090,176	25.40%
103	BUENA VISTA	1,141,702	2,146,668	1,004,966	88.02%
104	CHARLOTTESVILLE	18,050,639	55,540,108	37,489,469	207.69%
106	COLONIAL HEIGHTS	8,073,950	20,624,336	12,550,386	155.44%
107	COVINGTON	2,068,739	3,023,891	955,152	46.17%

**FY 2020 Actual Required Local Effort (RLE) for the Standards of Quality  
Compared to Actual Local Expenditures for Operations**

RLE Based on Chapter 1283, 2020 Virginia Acts of Assembly, and  
Final March 31, 2020, Average Daily Membership (ADM)

<b>Div. Num.</b>	<b>Division Name</b>	<b>FY 2020 Required Local Effort<sup>1</sup></b>	<b>FY 2020 Actual Local Expenditures for Operations<sup>2</sup></b>	<b>FY 2020 Actual Local Expenditures for Operations Above RLE</b>	<b>Percent of FY 2020 Actual Local Expenditures for Operations Above RLE</b>
108	DANVILLE	9,249,999	17,839,913	8,589,914	92.86%
109	FALLS CHURCH	13,879,583	41,372,495	27,492,912	198.08%
110	FREDERICKSBURG	15,896,915	27,904,312	12,007,397	75.53%
111	GALAX	2,309,701	3,083,974	774,273	33.52%
112	HAMPTON	32,606,554	70,401,492	37,794,938	115.91%
113	HARRISONBURG	15,913,688	31,083,405	15,169,717	95.32%
114	HOPEWELL	5,557,243	10,122,560	4,565,317	82.15%
115	LYNCHBURG	19,357,901	35,053,490	15,695,589	81.08%
116	MARTINSVILLE	2,601,118	5,093,785	2,492,667	95.83%
117	NEWPORT NEWS	49,985,216	106,614,715	56,629,499	113.29%
118	NORFOLK	53,179,530	97,074,141	43,894,611	82.54%
119	NORTON	1,519,329	1,637,837	118,508	7.80%
120	PETERSBURG	6,341,025	7,927,599	1,586,574	25.02%
121	PORTSMOUTH	20,635,149	48,604,086	27,968,937	135.54%
122	RADFORD	2,570,564	5,777,975	3,207,411	124.77%
123	RICHMOND CITY	86,456,848	156,080,024	69,623,176	80.53%
124	ROANOKE CITY	29,913,616	60,515,421	30,601,805	102.30%
126	STAUNTON	6,571,673	11,059,212	4,487,539	68.29%
127	SUFFOLK	30,291,647	55,562,591	25,270,944	83.43%
128	VIRGINIA BEACH	166,899,196	376,445,688	209,546,492	125.55%
130	WAYNESBORO	5,943,717	12,566,847	6,623,130	111.43%
131	WILLIAMSBURG	5,071,570	6,347,630	1,276,060	25.16%
132	WINCHESTER	12,591,826	28,243,651	15,651,825	124.30%
134	FAIRFAX CITY	17,795,483	40,014,121	22,218,638	124.86%
135	FRANKLIN CITY	2,084,420	4,562,180	2,477,760	118.87%

**FY 2020 Actual Required Local Effort (RLE) for the Standards of Quality  
Compared to Actual Local Expenditures for Operations**

RLE Based on Chapter 1283, 2020 Virginia Acts of Assembly, and  
Final March 31, 2020, Average Daily Membership (ADM)

<b>Div. Num.</b>	<b>Division Name</b>	<b>FY 2020 Required Local Effort<sup>1</sup></b>	<b>FY 2020 Actual Local Expenditures for Operations<sup>2</sup></b>	<b>FY 2020 Actual Local Expenditures for Operations Above RLE</b>	<b>Percent of FY 2020 Actual Local Expenditures for Operations Above RLE</b>
G136	CHESAPEAKE	94,325,366	196,556,122	102,230,756	108.38%
137	LEXINGTON	1,906,465	3,123,453	1,216,988	63.83%
138	EMPORIA	1,175,043	3,352,043	2,177,000	185.27%
139	SALEM	8,854,686	18,140,215	9,285,529	104.87%
142	POQUOSON	5,000,523	9,836,155	4,835,632	96.70%
143	MANASSAS	19,603,040	43,624,318	24,021,278	122.54%
144	MANASSAS PARK	7,130,293	11,503,267	4,372,974	61.33%
202	COLONIAL BEACH	1,767,050	1,985,192	218,142	12.34%
207	WEST POINT	1,379,836	4,605,139	3,225,303	233.75%

<sup>1</sup> Required local effort for SOQ programs (Basic Aid; Gifted Education; Vocational Education; Special Education; Prevention, Intervention and Remediation; Fringe Benefits; English as a Second Language; Early Reading Intervention, SOL Algebra Readiness, and Textbooks) based on Chapter 1283, 2020 Virginia Acts of Assembly (Special Session I) , and final March 31, 2020, Average Daily Membership.

<sup>2</sup> Local expenditures for operations are based on expenditures as reported by school divisions on the 2019-2020 Annual School Report Financial Section.

## **Fiscal Year 2021 Statewide Summary**

---

### **Budget Required Local Effort for the Standards of Quality**

*Fiscal Year 2021*

All school divisions certified that sufficient local funds have been budgeted to meet all required local effort amounts for SOQ programs in fiscal year 2020.

**FY 2021 Budgeted Required Local Effort (RLE) for the Standards of Quality**

RLE Based on Chapter 56, 2020 Special Session I Acts of Assembly, and  
Projected March 31, 2021, Average Daily Membership (ADM)

<b>Div. Num.</b>	<b>Division Name</b>	<b>FY 2021 Budgeted Required Local Effort<sup>1</sup></b>	<b>Has the Division Certified to Budgeting Local Funds Sufficient to Meet the FY 2021 Required Local Effort<sup>2</sup></b>
001	ACCOMACK	13,350,707	YES
002	ALBEMARLE	65,890,284	YES
003	ALLEGHANY	3,821,109	YES
004	AMELIA	4,267,909	YES
005	AMHERST	9,505,157	YES
006	APPOMATTOX	5,035,294	YES
007	ARLINGTON	169,814,359	YES
008	AUGUSTA	24,543,876	YES
009	BATH	3,581,658	YES
010	BEDFORD	19,478,873	YES
011	BLAND	1,694,270	YES
012	BOTETOURT	12,860,936	YES
013	BRUNSWICK	5,268,032	YES
014	BUCHANAN	5,704,246	YES
015	BUCKINGHAM	5,377,198	YES
016	CAMPBELL	15,218,676	YES
017	CAROLINE	10,495,122	YES
018	CARROLL	7,213,170	YES
019	CHARLES CITY	2,947,790	YES
020	CHARLOTTE	3,137,255	YES
021	CHESTERFIELD	57,604,887	YES
022	CLARKE	7,816,972	YES
023	CRAIG	1,547,870	YES
024	CULPEPER	22,602,868	YES
025	CUMBERLAND	2,852,551	YES
026	DICKENSON	3,927,671	YES
027	DINWIDDIE	9,443,415	YES
028	ESSEX	4,744,050	YES

**FY 2021 Budgeted Required Local Effort (RLE) for the Standards of Quality**

RLE Based on Chapter 56, 2020 Special Session I Acts of Assembly, and  
Projected March 31, 2021, Average Daily Membership (ADM)

<b>Div. Num.</b>	<b>Division Name</b>	<b>FY 2021 Budgeted Required Local Effort<sup>1</sup></b>	<b>Has the Division Certified to Budgeting Local Funds Sufficient to Meet the FY 2021 Required Local Effort<sup>2</sup></b>
029	FAIRFAX	955,836,126	YES
030	FAUQUIER	48,136,827	YES
031	FLOYD	4,391,546	YES
032	FLUVANNA	9,663,160	YES
033	FRANKLIN	18,893,629	YES
034	FREDERICK	41,706,962	YES
035	GILES	4,585,095	YES
036	GLOUCESTER	13,834,558	YES
037	GOOCHLAND	14,345,338	YES
038	GRAYSON	4,518,357	YES
039	GREENE	7,075,942	YES
040	GREENSVILLE	2,681,763	YES
041	HALIFAX	11,596,294	YES
042	HANOVER	55,175,022	YES
043	HENRICO	155,383,927	YES
044	HENRY	11,442,863	YES
045	HIGHLAND	2,149,509	YES
046	ISLE OF WIGHT	15,966,452	YES
047	JAMES CITY	41,585,011	YES
048	KING GEORGE	11,855,279	YES
049	KING QUEEN	3,007,816	YES
050	KING WILLIAM	5,496,261	YES
051	LANCASTER	5,996,731	YES
052	LEE	4,004,924	YES
053	LOUDOUN	345,789,228	YES
054	LOUISA	19,233,363	YES
055	LUNENBURG	3,259,658	YES
056	MADISON	5,344,182	YES

**FY 2021 Budgeted Required Local Effort (RLE) for the Standards of Quality**

RLE Based on Chapter 56, 2020 Special Session I Acts of Assembly, and  
Projected March 31, 2021, Average Daily Membership (ADM)

<b>Div. Num.</b>	<b>Division Name</b>	<b>FY 2021 Budgeted Required Local Effort<sup>1</sup></b>	<b>Has the Division Certified to Budgeting Local Funds Sufficient to Meet the FY 2021 Required Local Effort<sup>2</sup></b>
057	MATHEWS	4,120,603	YES
058	MECKLENBURG	12,046,361	YES
059	MIDDLESEX	5,444,945	YES
060	MONTGOMERY	28,066,061	YES
062	NELSON	6,362,305	YES
063	NEW KENT	10,011,840	YES
065	NORTHAMPTON	5,156,691	YES
066	NORTHUMBERLAND	6,613,386	YES
067	NOTTOWAY	3,754,834	YES
068	ORANGE	14,271,065	YES
069	PAGE	7,565,903	YES
070	PATRICK	4,662,853	YES
071	PITTSYLVANIA	14,872,352	YES
072	POWHATAN	13,730,379	YES
073	PRINCE EDWARD	5,012,052	YES
074	PRINCE GEORGE	10,992,205	YES
075	PRINCE WILLIAM	264,490,103	YES
077	PULASKI	9,283,064	YES
078	RAPPAHANNOCK	4,522,410	YES
079	RICHMOND	2,878,905	YES
080	ROANOKE	35,222,197	YES
081	ROCKBRIDGE	8,231,793	YES
082	ROCKINGHAM	30,094,558	YES
083	RUSSELL	6,295,264	YES
084	SCOTT	5,331,780	YES
085	SHENANDOAH	16,504,897	YES
086	SMYTH	6,729,646	YES
087	SOUTHAMPTON	6,318,953	YES

**FY 2021 Budgeted Required Local Effort (RLE) for the Standards of Quality**

RLE Based on Chapter 56, 2020 Special Session I Acts of Assembly, and  
Projected March 31, 2021, Average Daily Membership (ADM)

<b>Div. Num.</b>	<b>Division Name</b>	<b>FY 2021 Budgeted Required Local Effort<sup>1</sup></b>	<b>Has the Division Certified to Budgeting Local Funds Sufficient to Meet the FY 2021 Required Local Effort<sup>2</sup></b>
088	SPOTSYLVANIA	64,476,199	YES
089	STAFFORD	74,153,581	YES
090	SURRY	5,126,902	YES
091	SUSSEX	3,196,826	YES
092	TAZEWELL	10,280,531	YES
093	WARREN	16,531,210	YES
094	WASHINGTON	16,735,210	YES
095	WESTMORELAND	6,685,481	YES
096	WISE	8,933,420	YES
097	WYTHE	8,699,182	YES
098	YORK	35,346,689	YES
101	ALEXANDRIA	97,884,583	YES
102	BRISTOL	4,983,222	YES
103	BUENA VISTA	1,142,888	YES
104	CHARLOTTESVILLE	20,547,742	YES
106	COLONIAL HEIGHTS	8,553,213	YES
107	COVINGTON	2,154,440	YES
108	DANVILLE	10,557,881	YES
109	FALLS CHURCH	17,385,185	YES
110	FREDERICKSBURG	16,294,164	YES
111	GALAX	2,638,884	YES
112	HAMPTON	36,383,317	YES
113	HARRISONBURG	17,280,629	YES
114	HOPEWELL	5,953,526	YES
115	LYNCHBURG	20,487,658	YES
116	MARTINSVILLE	2,809,687	YES
117	NEWPORT NEWS	55,368,640	YES
118	NORFOLK	58,254,290	YES
119	NORTON	1,562,278	YES



**FY 2021 Budgeted Required Local Effort (RLE) for the Standards of Quality**

RLE Based on Chapter 56, 2020 Special Session I Acts of Assembly, and  
Projected March 31, 2021, Average Daily Membership (ADM)

<b>Div. Num.</b>	<b>Division Name</b>	<b>FY 2021 Budgeted Required Local Effort<sup>1</sup></b>	<b>Has the Division Certified to Budgeting Local Funds Sufficient to Meet the FY 2021 Required Local Effort<sup>2</sup></b>
120	PETERSBURG	6,984,107	YES
121	PORTSMOUTH	22,484,199	YES
122	RADFORD	2,728,106	YES
123	RICHMOND CITY	90,388,177	YES
124	ROANOKE CITY	31,585,808	YES
126	STAUNTON	7,086,844	YES
127	SUFFOLK	34,079,023	YES
128	VIRGINIA BEACH	185,625,412	YES
130	WAYNESBORO	6,765,330	YES
131	WILLIAMSBURG	5,319,547	YES
132	WINCHESTER	14,212,888	YES
134	FAIRFAX CITY	19,032,653	YES
135	FRANKLIN CITY	2,139,292	YES
136	CHESAPEAKE	104,851,393	YES
137	LEXINGTON	1,885,904	YES
138	EMPORIA	1,263,398	YES
139	SALEM	9,541,419	YES
142	POQUOSON	5,383,695	YES
143	MANASSAS	22,044,589	YES
144	MANASSAS PARK	7,859,099	YES
202	COLONIAL BEACH	1,625,198	YES
207	WEST POINT	1,563,467	YES

<sup>1</sup> Required local effort for SOQ programs (Basic Aid; Gifted Education; Vocational Education; Special Education; Prevention, Intervention and Remediation; Fringe Benefits; English as a Second Language; Textbooks; SOL Algebra Readiness; and Early Reading Intervention) based on Chapter 56, 2020 Virginia Acts of Assembly, and projected March 31, 2021, Average Daily Membership.

<sup>2</sup>As certified by school divisions in the FY 2021 Budgeted Required Local Effort and Required Local Match data collection.

## Fiscal Year 2020 Statewide Summary

---

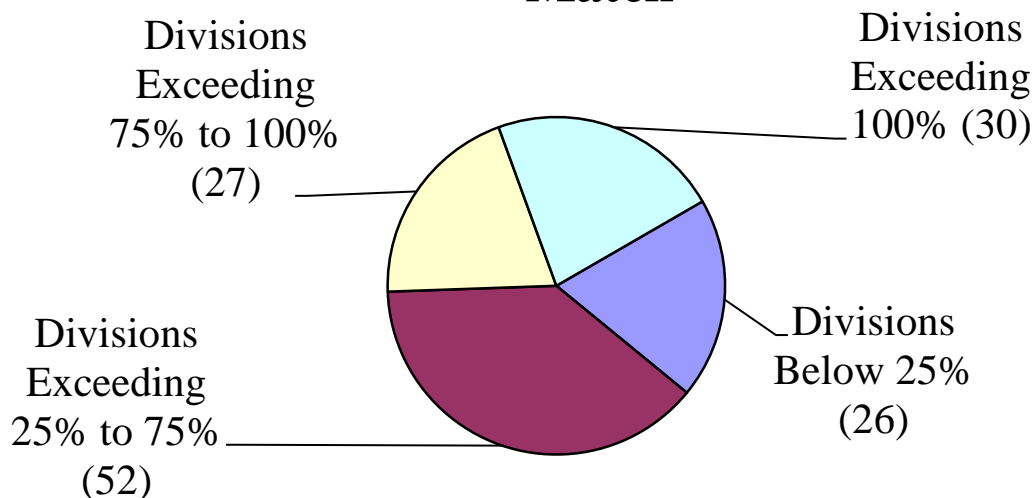
### Actual Required Local Match for Incentive and Lottery Accounts

*Fiscal Year 2020*

131 of 135 school divisions met required local match for all Incentive and Lottery amounts in which they elected to participate in fiscal year 2020. The funds used to meet required local match are actual local operational expenditures that are above those used to meet required local effort on the Standards of Quality. The range of actual local support of the required amounts for local effort and local match is:

- Low – Westmoreland - -8.44%
- High – West Point – 224.80%
- The average actual local operational expenditure in excess of the required level for fiscal year 2020: 70.99%

### Distribution - Percent of FY20 Actual Local Expenditures for Operations Above Required Local Effort and Required Local Match



**FY 2020 Actual Required Local Match (RLM) for Incentive and Lottery Accounts Compared to Actual Local Expenditures for Operations Above Required Local Effort (RLE)**

RLM Based on Chapter 1283, 2020 Virginia Acts of Assembly,  
Final March 31, 2020, Average Daily Membership (ADM), and Actual Participation Data

<b>Div. Num.</b>	<b>Division Name</b>	<b>FY 2020 Required Local Match<sup>1</sup></b>	<b>FY 2020 Actual Local Expenditures for Operations Above RLE<sup>2</sup></b>	<b>FY 2020 Actual Local Expenditures for Operations Above RLE and RLM</b>	<b>Percent of FY 2020 Actual Local Expenditures for Operations Above RLE and RLM</b>
001	ACCOMACK	1,527,570	4,385,632	2,858,062	19.90%
002	ALBEMARLE	2,068,247	77,959,438	75,891,191	118.47%
003	ALLEGHANY	291,237	5,714,423	5,423,186	132.49%
004	AMELIA	278,203	1,572,387	1,294,184	31.63%
005	AMHERST	632,057	5,311,889	4,679,832	51.21%
006	APPOMATTOX	360,805	1,086,000	725,195	14.89%
007	ARLINGTON	4,755,548	289,772,850	285,017,302	175.78%
008	AUGUSTA	1,431,432	22,726,069	21,294,637	91.36%
009	BATH	122,500	3,931,942	3,809,442	109.66%
010	BEDFORD	781,676	18,473,140	17,691,464	92.64%
011	BLAND	63,214	1,262,132	1,198,918	81.50%
012	BOTETOURT	174,325	11,458,287	11,283,962	96.55%
013	BRUNSWICK	690,631	1,816,117	1,125,486	23.21%
014	BUCHANAN	597,315	5,094,302	4,496,987	72.86%
015	BUCKINGHAM	714,565	836,869	122,304	2.07%
016	CAMPBELL	1,073,745	12,753,181	11,679,436	78.93%
017	CAROLINE	773,492	4,292,239	3,518,747	34.42%
018	CARROLL	609,538	3,549,702	2,940,164	40.87%
019	CHARLES CITY	187,973	3,309,417	3,121,444	127.39%
020	CHARLOTTE	271,287	1,644,798	1,373,511	41.98%
021	CHESTERFIELD	4,877,558	97,936,985	93,059,427	64.69%
022	CLARKE	55,115	6,280,598	6,225,483	86.73%
023	CRAIG	60,510	270,681	210,171	14.13%
024	CULPEPER	1,274,123	10,828,851	9,554,728	45.70%
025	CUMBERLAND	333,032	961,005	627,973	21.90%
026	DICKENSON	346,105	2,395,018	2,048,913	52.15%
027	DINWIDDIE	640,259	6,625,633	5,985,374	66.97%

**FY 2020 Actual Required Local Match (RLM) for Incentive and Lottery Accounts Compared to Actual Local Expenditures for Operations Above Required Local Effort (RLE)**

RLM Based on Chapter 1283, 2020 Virginia Acts of Assembly,  
Final March 31, 2020, Average Daily Membership (ADM), and Actual Participation Data

<b>Div. Num.</b>	<b>Division Name</b>	<b>FY 2020 Required Local Match<sup>1</sup></b>	<b>FY 2020 Actual Local Expenditures for Operations Above RLE<sup>2</sup></b>	<b>FY 2020 Actual Local Expenditures for Operations Above RLE and RLM</b>	<b>Percent of FY 2020 Actual Local Expenditures for Operations Above RLE and RLM</b>
028	ESSEX	508,917	2,959,396	2,450,479	54.13%
029	FAIRFAX	20,586,211	1,205,425,711	1,184,839,500	128.28%
030	FAUQUIER	841,535	45,376,372	44,534,837	93.85%
031	FLOYD	286,919	2,907,567	2,620,648	60.21%
032	FLUVANNA	236,426	7,761,482	7,525,056	84.72%
033	FRANKLIN	1,353,734	13,622,868	12,269,134	65.20%
034	FREDERICK	1,037,632	49,815,550	48,777,918	130.24%
035	GILES	305,737	3,251,365	2,945,628	63.10%
036	GLOUCESTER	488,351	14,428,407	13,940,056	104.05%
037	GOOCHLAND	291,168	9,326,224	9,035,056	65.72%
038	GRAYSON	362,791	1,884,963	1,522,172	35.55%
039	GREENE	336,513	6,313,283	5,976,770	88.85%
040	GREENSVILLE	279,366	1,131,427	852,061	38.34%
041	HALIFAX	1,029,813	1,456,280	426,467	3.71%
042	HANOVER	599,981	33,291,367	32,691,386	63.69%
043	HENRICO	9,000,201	118,813,375	109,813,174	74.84%
044	HENRY	1,367,806	733,480	(634,326)	(5.35%)
045	HIGHLAND	98,466	215,311	116,845	5.96%
046	ISLE OF WIGHT	613,970	10,462,060	9,848,090	64.22%
047	JAMES CITY	1,181,238	41,557,006	40,375,768	103.81%
048	KING GEORGE	263,905	5,491,240	5,227,335	47.17%
049	KING QUEEN	189,699	1,648,507	1,458,808	52.83%
050	KING WILLIAM	43,242	3,513,527	3,470,285	66.49%
051	LANCASTER	661,775	5,591,557	4,929,782	76.84%
052	LEE	366,119	1,525,088	1,158,969	25.94%
053	LOUDOUN	2,355,348	601,026,980	598,671,632	190.91%
054	LOUISA	1,150,968	18,410,008	17,259,040	91.04%

**FY 2020 Actual Required Local Match (RLM) for Incentive and Lottery Accounts Compared to Actual Local Expenditures for Operations Above Required Local Effort (RLE)**

RLM Based on Chapter 1283, 2020 Virginia Acts of Assembly,  
Final March 31, 2020, Average Daily Membership (ADM), and Actual Participation Data

<b>Div. Num.</b>	<b>Division Name</b>	<b>FY 2020 Required Local Match<sup>1</sup></b>	<b>FY 2020 Actual Local Expenditures for Operations Above RLE<sup>2</sup></b>	<b>FY 2020 Actual Local Expenditures for Operations Above RLE and RLM</b>	<b>Percent of FY 2020 Actual Local Expenditures for Operations Above RLE and RLM</b>
055	LUNENBURG	342,552	338,551	(4,001)	(0.12%)
056	MADISON	244,579	4,274,862	4,030,283	75.18%
057	MATHEWS	159,342	4,446,892	4,287,550	106.50%
058	MECKLENBURG	1,210,630	21,418,624	20,207,994	173.89%
059	MIDDLESEX	478,609	4,292,542	3,813,933	70.87%
060	MONTGOMERY	1,416,001	26,436,062	25,020,061	93.40%
062	NELSON	442,466	8,812,313	8,369,847	131.08%
063	NEW KENT	46,745	4,487,738	4,440,993	48.96%
065	NORTHAMPTON	770,094	2,609,672	1,839,578	32.44%
066	NORTHUMBERLAND	597,234	5,569,090	4,971,856	71.18%
067	NOTTOWAY	415,446	649,223	233,777	6.24%
068	ORANGE	869,376	7,339,525	6,470,149	46.27%
069	PAGE	491,906	2,926,030	2,434,124	35.20%
070	PATRICK	401,099	668,247	267,148	5.65%
071	PITTSYLVANIA	1,240,852	4,261,258	3,020,406	20.21%
072	POWHATAN	128,360	10,143,088	10,014,728	83.09%
073	PRINCE EDWARD	764,813	1,832,604	1,067,791	18.91%
074	PRINCE GEORGE	441,666	5,652,183	5,210,517	50.30%
075	PRINCE WILLIAM	9,947,439	246,197,021	236,249,582	96.37%
077	PULASKI	779,376	6,134,345	5,354,969	56.34%
078	RAPPAHANNOCK	37,048	5,470,591	5,433,543	138.37%
079	RICHMOND	268,710	1,626,441	1,357,731	43.71%
080	ROANOKE	691,531	33,427,916	32,736,385	98.00%
081	ROCKBRIDGE	487,522	5,147,396	4,659,874	50.22%
082	ROCKINGHAM	1,425,627	33,915,924	32,490,297	115.80%
083	RUSSELL	578,253	895,562	317,309	5.03%
084	SCOTT	385,030	(65,916)	(450,946)	(8.44%)
085	SHENANDOAH	1,069,700	13,841,573	12,771,873	80.10%

**FY 2020 Actual Required Local Match (RLM) for Incentive and Lottery Accounts Compared to Actual Local Expenditures for Operations Above Required Local Effort (RLE)**

RLM Based on Chapter 1283, 2020 Virginia Acts of Assembly,  
Final March 31, 2020, Average Daily Membership (ADM), and Actual Participation Data

<b>Div. Num.</b>	<b>Division Name</b>	<b>FY 2020 Required Local Match<sup>1</sup></b>	<b>FY 2020 Actual Local Expenditures for Operations Above RLE<sup>2</sup></b>	<b>FY 2020 Actual Local Expenditures for Operations Above RLE and RLM</b>	<b>Percent of FY 2020 Actual Local Expenditures for Operations Above RLE and RLM</b>
086	SMYTH	558,810	1,664,488	1,105,678	16.38%
087	SOUTHAMPTON	409,290	5,185,097	4,775,807	79.53%
088	SPOTSYLVANIA	2,478,382	45,845,972	43,367,590	72.25%
089	STAFFORD	1,403,100	54,361,918	52,958,818	79.73%
090	SURRY	422,553	7,413,332	6,990,779	145.69%
091	SUSSEX	490,680	5,201,730	4,711,050	136.87%
092	TAZEWELL	858,227	1,567,142	708,915	6.84%
093	WARREN	942,272	9,056,803	8,114,531	52.43%
094	WASHINGTON	1,133,890	10,640,583	9,506,693	58.78%
095	WESTMORELAND	976,559	768,308	(208,251)	(2.46%)
096	WISE	980,802	2,852,527	1,871,725	19.27%
097	WYTHE	465,893	4,136,744	3,670,851	43.57%
098	YORK	269,974	23,531,342	23,261,368	71.93%
101	ALEXANDRIA	6,441,146	133,018,288	126,577,142	132.85%
102	BRISTOL	554,713	1,225,114	670,401	13.83%
103	BUENA VISTA	68,267	1,021,343	953,076	78.77%
104	CHARLOTTESVILLE	2,136,011	38,001,875	35,865,864	177.67%
106	COLONIAL HEIGHTS	612,737	12,724,866	12,112,129	139.43%
107	COVINGTON	211,292	955,152	743,860	32.63%
108	DANVILLE	1,969,532	8,915,255	6,945,723	61.91%
109	FALLS CHURCH	42,405	27,527,705	27,485,300	197.42%
110	FREDERICKSBURG	1,551,483	12,159,220	10,607,737	60.79%
111	GALAX	264,763	823,369	558,606	21.70%
112	HAMPTON	3,609,036	38,717,403	35,108,367	96.94%
113	HARRISONBURG	2,414,239	15,746,174	13,331,935	72.74%
114	HOPEWELL	903,262	4,750,421	3,847,159	59.55%
115	LYNCHBURG	2,638,646	16,252,656	13,614,010	61.89%

**FY 2020 Actual Required Local Match (RLM) for Incentive and Lottery Accounts Compared to Actual Local Expenditures for Operations Above Required Local Effort (RLE)**

RLM Based on Chapter 1283, 2020 Virginia Acts of Assembly,  
Final March 31, 2020, Average Daily Membership (ADM), and Actual Participation Data

<b>Div. Num.</b>	<b>Division Name</b>	<b>FY 2020 Required Local Match<sup>1</sup></b>	<b>FY 2020 Actual Local Expenditures for Operations Above RLE<sup>2</sup></b>	<b>FY 2020 Actual Local Expenditures for Operations Above RLE and RLM</b>	<b>Percent of FY 2020 Actual Local Expenditures for Operations Above RLE and RLM</b>
116	MARTINSVILLE	437,855	2,557,496	2,119,641	69.75%
117	NEWPORT NEWS	6,869,284	57,470,062	50,600,778	89.00%
118	NORFOLK	8,548,872	46,229,907	37,681,035	61.04%
119	NORTON	144,933	147,557	2,624	0.16%
120	PETERSBURG	1,542,840	1,921,687	378,847	4.81%
121	PORTSMOUTH	2,907,939	28,680,697	25,772,758	109.47%
122	RADFORD	163,175	3,245,826	3,082,651	112.76%
123	RICHMOND CITY	12,923,722	71,931,803	59,008,081	59.38%
124	ROANOKE CITY	5,179,050	31,543,984	26,364,934	75.13%
126	STAUNTON	576,745	4,619,637	4,042,892	56.56%
127	SUFFOLK	2,520,979	26,043,310	23,522,331	71.69%
128	VIRGINIA BEACH	7,748,197	211,499,390	203,751,193	116.66%
130	WAYNESBORO	672,890	6,781,571	6,108,681	92.32%
131	WILLIAMSBURG	171,941	1,276,060	1,104,119	21.06%
132	WINCHESTER	1,270,222	15,743,106	14,472,884	104.41%
134	FAIRFAX CITY	418,701	22,218,638	21,799,937	119.69%
135	FRANKLIN CITY	399,994	2,507,985	2,107,991	84.85%
136	CHESAPEAKE	4,280,149	103,022,367	98,742,218	100.14%
137	LEXINGTON	17,119	1,216,988	1,199,869	62.38%
138	EMPORIA	175,366	2,177,000	2,001,634	148.22%
139	SALEM	307,903	9,372,484	9,064,581	98.93%
142	POQUOSON	22,543	4,846,285	4,823,742	96.03%
143	MANASSAS	2,012,965	24,554,566	22,541,601	104.28%
144	MANASSAS PARK	605,781	4,491,429	3,885,648	50.23%
202	COLONIAL BEACH	200,826	218,142	17,316	0.88%
207	WEST POINT	37,982	3,225,303	3,187,321	224.80%

**FY 2020 Actual Required Local Match (RLM) for Incentive and Lottery Accounts Compared to Actual Local Expenditures for Operations Above Required Local Effort (RLE)**

RLM Based on Chapter 1283, 2020 Virginia Acts of Assembly,  
Final March 31, 2020, Average Daily Membership (ADM), and Actual Participation Data

<b>Div. Num.</b>	<b>Division Name</b>	<b>FY 2020 Required Local Match<sup>1</sup></b>	<b>FY 2020 Actual Local Expenditures for Operations Above RLE<sup>2</sup></b>	<b>FY 2020 Actual Local Expenditures for Operations Above RLE and RLM</b>	<b>Percent of FY 2020 Actual Local Expenditures for Operations Above RLE and RLM</b>
------------------	----------------------	---	---	---	--

<sup>1</sup> Required local match programs (At-Risk, Virginia Preschool Initiative, Early Reading Specialists Initiative, Math and Reading Specialists, and K-3 Primary Class Size Reduction) based on Chapter 1283, 2020 Acts of Assembly, Final March 31, 2020, Average Daily Membership, and actual participation data.

<sup>2</sup> As reported by school divisions on the 2019-2020 Annual School Report Financial Section. This figure includes actual local operational expenditures and actual expenditures for the Virginia Preschool Initiative. Local expenditures for operations can be used to meet local match requirements for Incentive and Lottery-funded accounts. Local expenditures for the Virginia Preschool Initiative can only be used to meet the local match requirements for that program.



## **Fiscal Year 2021 Statewide Summary**

---

### **Budgeted Required Local Match for Incentive and Lottery Accounts**

*Fiscal Year 2021*

All school divisions certified that sufficient local funds have been budgeted to meet all required local match amounts for all Incentive and Lottery accounts in which they elected to participate in fiscal year 2021. The funds used to meet required local match are budgeted local operational expenditures that are above those used to meet required local effort on the Standards of Quality.

**FY 2021 Budgeted Required Local Match (RLM)  
for Incentive and Lottery-funded Programs**

RLM Based on Chapter 56, 2020 Special Session I Acts of Assembly,  
Projected March 31, 2021, Average Daily Membership (ADM), and Virginia Preschool Initiative Participation

<b>Div. Num.</b>	<b>Division Name</b>	<b>FY 2021 Budgeted Required Local Match<sup>1</sup></b>	<b>Has the Division Certified to Budgeting Local Funds Sufficient to Meet the FY 2021 Required Local Match<sup>2</sup></b>
001	ACCOMACK	NO	YES
002	ALBEMARLE	NO	YES
003	ALLEGHANY	NO	YES
004	AMELIA	NO	YES
005	AMHERST	NO	YES
006	APPOMATTOX	NO	YES
007	ARLINGTON	NO	YES
008	AUGUSTA	NO	YES
009	BATH	NO	YES
010	BEDFORD	NO	YES
011	BLAND	NO	YES
012	BOTETOURT	NO	YES
013	BRUNSWICK	NO	YES
014	BUCHANAN	NO	YES
015	BUCKINGHAM	NO	YES
016	CAMPBELL	NO	YES
017	CAROLINE	NO	YES
018	CARROLL	NO	YES
019	CHARLES CITY	NO	YES
020	CHARLOTTE	NO	YES
021	CHESTERFIELD	NO	YES
022	CLARKE	NO	YES
023	CRAIG	NO	YES
024	CULPEPER	NO	YES
025	CUMBERLAND	NO	YES
026	DICKENSON	NO	YES
027	DINWIDDIE	NO	YES
028	ESSEX	NO	YES

**FY 2021 Budgeted Required Local Match (RLM)  
for Incentive and Lottery-funded Programs**

RLM Based on Chapter 56, 2020 Special Session I Acts of Assembly,  
Projected March 31, 2021, Average Daily Membership (ADM), and Virginia Preschool Initiative Participation

<b>Div. Num.</b>	<b>Division Name</b>	<b>FY 2021 Budgeted Required Local Match<sup>1</sup></b>	<b>Has the Division Certified to Budgeting Local Funds Sufficient to Meet the FY 2021 Required Local Match<sup>2</sup></b>
029	FAIRFAX	YES	YES
030	FAUQUIER	NO	YES
031	FLOYD	NO	YES
032	FLUVANNA	NO	YES
033	FRANKLIN	NO	YES
034	FREDERICK	NO	YES
035	GILES	NO	YES
036	GLOUCESTER	NO	YES
037	GOOCHLAND	NO	YES
038	GRAYSON	NO	YES
039	GREENE	NO	YES
040	GREENSVILLE	NO	YES
041	HALIFAX	NO	YES
042	HANOVER	NO	YES
043	HENRICO	YES	YES
044	HENRY	NO	YES
045	HIGHLAND	NO	YES
046	ISLE OF WIGHT	NO	YES
047	JAMES CITY	NO	YES
048	KING GEORGE	NO	YES
049	KING QUEEN	NO	YES
050	KING WILLIAM	NO	YES
051	LANCASTER	NO	YES
052	LEE	NO	YES
053	LOUDOUN	YES	YES
054	LOUISA	NO	YES
055	LUNENBURG	NO	YES
056	MADISON	NO	YES

**FY 2021 Budgeted Required Local Match (RLM)  
for Incentive and Lottery-funded Programs**

RLM Based on Chapter 56, 2020 Special Session I Acts of Assembly,  
Projected March 31, 2021, Average Daily Membership (ADM), and Virginia Preschool Initiative Participation

<b>Div. Num.</b>	<b>Division Name</b>	<b>FY 2021 Budgeted Required Local Match<sup>1</sup></b>	<b>Has the Division Certified to Budgeting Local Funds Sufficient to Meet the FY 2021 Required Local Match<sup>2</sup></b>
057	MATHEWS	NO	YES
058	MECKLENBURG	NO	YES
059	MIDDLESEX	NO	YES
060	MONTGOMERY	NO	YES
062	NELSON	NO	YES
063	NEW KENT	NO	YES
065	NORTHAMPTON	NO	YES
066	NORTHUMBERLAND	NO	YES
067	NOTTOWAY	NO	YES
068	ORANGE	NO	YES
069	PAGE	NO	YES
070	PATRICK	NO	YES
071	PITTSYLVANIA	NO	YES
072	POWHATAN	NO	YES
073	PRINCE EDWARD	NO	YES
074	PRINCE GEORGE	NO	YES
075	PRINCE WILLIAM	NO	YES
077	PULASKI	NO	YES
078	RAPPAHANNOCK	NO	YES
079	RICHMOND	NO	YES
080	ROANOKE	YES	YES
081	ROCKBRIDGE	NO	YES
082	ROCKINGHAM	NO	YES
083	RUSSELL	NO	YES
084	SCOTT	NO	YES
085	SHENANDOAH	NO	YES
086	SMYTH	NO	YES
087	SOUTHAMPTON	NO	YES

**FY 2021 Budgeted Required Local Match (RLM)  
for Incentive and Lottery-funded Programs**

RLM Based on Chapter 56, 2020 Special Session I Acts of Assembly,  
Projected March 31, 2021, Average Daily Membership (ADM), and Virginia Preschool Initiative Participation

<b>Div. Num.</b>	<b>Division Name</b>	<b>FY 2021 Budgeted Required Local Match<sup>1</sup></b>	<b>Has the Division Certified to Budgeting Local Funds Sufficient to Meet the FY 2021 Required Local Match<sup>2</sup></b>
088	SPOTSYLVANIA	NO	YES
089	STAFFORD	NO	YES
090	SURRY	NO	YES
091	SUSSEX	NO	YES
092	TAZEWELL	NO	YES
093	WARREN	NO	YES
094	WASHINGTON	NO	YES
095	WESTMORELAND	NO	YES
096	WISE	NO	YES
097	WYTHE	NO	YES
098	YORK	NO	YES
101	ALEXANDRIA	YES	YES
102	BRISTOL	NO	YES
103	BUENA VISTA	NO	YES
104	CHARLOTTESVILLE	NO	YES
106	COLONIAL HEIGHTS	NO	YES
107	COVINGTON	NO	YES
108	DANVILLE	YES	YES
109	FALLS CHURCH	NO	YES
110	FREDERICKSBURG	NO	YES
111	GALAX	NO	YES
112	HAMPTON	NO	YES
113	HARRISONBURG	YES	YES
114	HOPEWELL	NO	YES
115	LYNCHBURG	NO	YES
116	MARTINSVILLE	NO	YES
117	NEWPORT NEWS	YES	YES
118	NORFOLK	YES	YES

**FY 2021 Budgeted Required Local Match (RLM)  
for Incentive and Lottery-funded Programs**

RLM Based on Chapter 56, 2020 Special Session I Acts of Assembly,  
Projected March 31, 2021, Average Daily Membership (ADM), and Virginia Preschool Initiative Participation

<b>Div. Num.</b>	<b>Division Name</b>	<b>FY 2021 Budgeted Required Local Match<sup>1</sup></b>	<b>Has the Division Certified to Budgeting Local Funds Sufficient to Meet the FY 2021 Required Local Match<sup>2</sup></b>
119	NORTON	NO	YES
120	PETERSBURG	YES	YES
121	PORTSMOUTH	YES	YES
122	RADFORD	NO	YES
123	RICHMOND CITY	YES	YES
124	ROANOKE CITY	NO	YES
126	STAUNTON	NO	YES
127	SUFFOLK	NO	YES
128	VIRGINIA BEACH	NO	YES
130	WAYNESBORO	NO	YES
131	WILLIAMSBURG	NO	YES
132	WINCHESTER	NO	YES
134	FAIRFAX CITY	NO	YES
135	FRANKLIN CITY	NO	YES
136	CHESAPEAKE	NO	YES
137	LEXINGTON	NO	YES
138	EMPORIA	NO	YES
139	SALEM	NO	YES
142	POQUOSON	NO	YES
143	MANASSAS	YES	YES
144	MANASSAS PARK	NO	YES
202	COLONIAL BEACH	NO	YES
207	WEST POINT	NO	YES

<sup>1</sup> Required local match programs (At-Risk, Virginia Preschool Initiative, K-3 Primary Class Size Reduction, Math/Reading Instructional Specialist Initiative, and Early Reading Specialists Initiative) based on Chapter 56, 2020 Virginia Acts of Assembly, and projected March 31, 2021, Average Daily Membership.

<sup>2</sup> As reported by school divisions on the FY 2021 Budgeted Required Local Effort and Required Local Match data collection. Divisions may not be eligible for all Required Local Match programs and may not elect to participate in all programs for which they are eligible. Divisions certify to budgeting local funds sufficient to meet the FY 2021 Required Local Match only for the programs in which they elect to participate.

**School Division Participation in Optional Programs with Local Match Requirements**  
*Fiscal Year 2021*

Pursuant to Item 145, Paragraph B.10, Chapter 56, 2020 Special Session I General Assembly, for fiscal year 2021, the Virginia Department of Education collected data on budgeted required local match for applicable Incentive and Lottery-funded accounts that require a local match.

As part of this data collection, school divisions also certified participation in certain incentive and Lottery-funded accounts, as applicable. All school divisions have submitted completed reports and have certified their participation status for fiscal year 2021.

School divisions, if eligible for funding, either opted in or opted out of participating in the operational programs that have a required local match. If sufficient local operating expenditures were not available to meet local match requirements, then local school divisions requested additional local appropriation from the governing body prior to receiving state funds in fiscal year 2021.

The following information details by account the school division participation in Incentive and Lottery-funded accounts in fiscal year 2021.

	Number of Divisions Opting In	Number of Divisions That Must Request Additional Local Appropriations	Number of Divisions Not Eligible for Funding	Number of Divisions Opting Out
At Risk	135	0	0	0
Virginia Preschool Initiative (VPI)	125	0	6	4
Early Reading Specialists Initiative	14	0	119	2
K-3 Primary Class Size Reduction	128	0	7	0
Math/Reading Instructional Specialist Initiative	10	0	122	3

## Appendix A

---

### Copy of Legislative Mandate for the Reporting Requirement

*Code of Virginia*

#### **§ 22.1-97. Calculation and reporting of required local expenditures; procedure if locality fails to appropriate sufficient educational funds.**

A. The Department of Education shall collect annually the data necessary to make calculations and reports required by this subsection.

At the beginning of each school year, the Department shall make calculations to ensure that each school division has appropriated sufficient funds to support its estimated required local expenditure for providing an educational program meeting the prescribed Standards of Quality, required by Article VIII of the Constitution of Virginia and Chapter 13.2 (§ [22.1-253.13:1](#) et seq.) of this title. At the conclusion of the school year, the Department shall make calculations to verify whether the locality has provided the required expenditure, based on average daily membership as of March 31 of the relevant school year.

The Department shall report annually to the House Committees on Education and Appropriations and the Senate Committees on Finance and Education and Health the results of such calculations and the degree to which each school division has met, failed to meet, or surpassed its required expenditure.

The Joint Legislative Audit and Review Commission shall report annually to the House Committees on Education and Appropriations and the Senate Committees on Finance and Education and Health the state expenditure provided each locality for an educational program meeting the Standards of Quality.

The Department and the Joint Legislative Audit and Review Commission shall coordinate to ensure that their respective reports are based upon comparable data and are delivered together, or as closely following one another as practicable, to the appropriate standing committees.

B. Whenever such calculations indicate that the governing body of a county, city or town fails or refuses to appropriate funds sufficient to provide that portion of the cost apportioned to such county, city or town by law for maintaining an educational program meeting the Standards of Quality, the Board of Education shall notify the Attorney General of such failure or refusal in writing signed by the president of the Board. Upon receipt of such notification, it shall be the duty of the Attorney General to file in the circuit court for the county, city or town a petition for a writ of mandamus directing and requiring such governing body to make forthwith such appropriation as is required by law.

The petition shall be in the name of the Board of Education, and the governing body shall be made a party defendant thereto. The court may, in its discretion, cause such other officers or persons to be made parties defendant as it may deem proper. The court may make such order as may be appropriate respecting the employment and compensation of an attorney or attorneys for any party defendant not otherwise represented by counsel. The petition shall be given first



priority on the docket of such court and shall be heard expeditiously in accordance with the procedures prescribed in Article 2 (§ [8.01-644](#) et seq.) of Chapter 25 of Title 8.01 and the writ of mandamus shall be awarded or denied according to the law and facts of the case and with or without costs, as the court may determine. The order of the court shall be final upon entry. Any appeal therefrom shall be heard and disposed of promptly by the Supreme Court next after habeas corpus cases already on the docket.

## Appendix B

---

### Copy of Legislative Mandate Directing the Required Local effort and Required Local Match Data Collection

*Chapter 1283, 2020 Virginia Acts of Assembly*

#### **Item 136, Paragraphs A.5 and A.6:**

5. "Required Local Expenditure for the Standards of Quality" - The locality's share based on the composite index of local ability-to-pay of the cost required by all the Standards of Quality minus its estimated revenues from the state sales and use tax dedicated to public education and those sales tax revenues transferred to the general fund from the Public Education Standards of Quality/Local Real Estate Property Tax Relief Fund and appropriated in this Item, both of which are returned on the basis of the latest yearly estimate of school age population provided by the Weldon Cooper Center for Public Service, as specified in this Item, collected by the Department of Education and distributed to school divisions in the fiscal year in which the school year begins.

6. "Required Local Match" - The locality's required share of program cost based on the composite index of local ability-to-pay for all Lottery and Incentive programs, where required, in which the school division has elected to participate in a fiscal year.

#### **Item 136, Paragraphs B.8 - B.11:**

8.a.1) Pursuant to § 22.1-97, Code of Virginia, the Department of Education is required to make calculations at the start of the school year to ensure that school divisions have appropriated adequate funds to support their estimated required local expenditure for the corresponding state fiscal year. In an effort to reduce the administrative burden on school divisions resulting from state data collections, such as the one needed to make the aforementioned calculations, the requirements of § 22.1-97, Code of Virginia, pertaining to the adequacy of estimated required local expenditures, shall be satisfied by signed certification by each division superintendent at the beginning of each school year that sufficient local funds have been budgeted to meet all state required local effort and required local match amounts. This provision shall only apply to calculations required of the Department of Education related to estimated required local expenditures and shall not pertain to the calculations associated with actual required local expenditures after the close of the school year.

2) The Department of Education shall also make calculations after the close of the school year to verify that the required local effort level, based on actual March 31 Average Daily Membership, was met. Pursuant to § 22.1-97, Code of Virginia, the Department of Education shall report annually, no later than the first day of the General Assembly session, to the House Committees on Education and Appropriations and the Senate Committees on Finance and Education and Health, the results of such calculations made after the close of the school year and the degree to which each school division has met, failed to meet, or surpassed its required local expenditure. The Department of Education shall specify the calculations to determine if a school division has expended its required local expenditure for the Standards of Quality. This calculation may include but is not limited to the following calculations:

b. The total expenditures for operation, defined as total expenditures less all capital outlays, expenditures for debt service, facilities, non-regular day school programs (such as adult education, preschool, and non-local education programs), and any transfers to regional programs will be calculated.

c. The following state funds will be deducted from the amount calculated in paragraph a. above: revenues from the state sales and use tax (returned on the basis of the latest yearly estimate of school age population provided by the Weldon Cooper Center for Public Service, as specified in this Item) for sales in the fiscal year in which the school year begins; total receipts from state funds (except state funds for non-regular day school programs and state funds used for capital or debt service purposes); and the state share of any balances carried forward from the previous fiscal year. Any qualifying state funds that remain unspent at the end of the fiscal year will be added to the amount calculated in paragraph a. above.

d. Federal funds, and any federal funds carried forward from the previous fiscal year, will also be deducted from the amount calculated in paragraph a. above. Any federal funds that remain unspent at the end of the fiscal year and any capital expenditures paid from federal funds will be added to the amount calculated in paragraph a. above.

e. Tuition receipts, receipts from payments from other cities or counties, and fund transfers will also be deducted from the amount calculated in paragraph a, then

f. The final amount calculated as described above must be equal to or greater than the required local expenditure defined in paragraph A. 5.

g. The Department of Education shall collect the data necessary to perform the calculations of required local expenditure as required by this section.

h. A locality whose expenditure in fact exceeds the required amount from local funds may not reduce its expenditures unless it first complies with all of the Standards of Quality.

9.a. Any required local matching funds which a locality, as of the end of a school year, has not expended, pursuant to this Item, for the Standards of Quality shall be paid by the locality into the general fund of the state treasury. Such payments shall be made not later than the end of the school year following that in which the under expenditure occurs.

b. Whenever the Department of Education has recovered funds as defined in the preceding paragraph a., the Secretary of Education is authorized to repay to the locality affected by that action, seventy-five percent (75%) of those funds upon his determination that:

1) The local school board agrees to include the funds in its June 30 ending balance for the year following that in which the under expenditure occurs;

2) The local governing body agrees to reappropriate the funds as a supplemental appropriation to the approved budget for the second year following that in which the under expenditure occurs, in an appropriate category as requested by the local school board, for the direct benefit of the students;

3) The local school board agrees to expend these funds, over and above the funds required to meet the required local expenditure for the second year following that in which the under expenditure occurs, for a special project, the details of which must be furnished to the Department of Education for review and approval;

4) The local school board agrees to submit quarterly reports to the Department of Education on the use of funds provided through this project award; and

5) The local governing body and the local school board agree that the project award will be cancelled and the funds withdrawn if the above conditions have not been met as of June 30 of the second year following that in which the under expenditure occurs.

c. There is hereby appropriated, for the purposes of the foregoing repayment, a sum sufficient, not to exceed 75 percent of the funds deposited in the general fund pursuant to the preceding paragraph a.

10. The Department of Education shall specify the manner for collecting the required information and the method for determining if a school division has expended the local funds required to support the actual local match based on all Lottery and Incentive programs in which the school division has elected to participate. Unless specifically stated otherwise in this Item, school divisions electing to participate in any Lottery or Incentive program that requires a local funding match in order to receive state funding, shall certify to the Department of Education its intent to participate in each program by July 1 each fiscal year in a manner prescribed by the Department of Education. As part of this certification process, each division superintendent must also certify that adequate local funds have been appropriated, above the required local effort for the Standards of Quality, to support the projected required local match based on the Lottery and Incentive programs in which the school division has elected to participate. State funding for such program(s) shall not be made until such time that the school division can certify that sufficient local funding has been appropriated to meet required local match. The Department of Education shall make calculations after the close of the fiscal year to verify that the required local match was met based on the state funds that were received.

11. Any sum of local matching funds for Lottery and Incentive program which a locality has not expended as of the end of a fiscal year in support of the required local match pursuant to this Item shall be paid by the locality into the general fund of the state treasury unless the carryover of those unspent funds is specifically permitted by other provisions of this act. Such payments shall be made no later than the end of the school year following that in which the under expenditure occurred.