



**ACTUAL FY 2022 REQUIRED LOCAL
EFFORT AND REQUIRED LOCAL
MATCH AND CERTIFICATION OF
BUDGETED FY 2023 REQUIRED LOCAL
EFFORT AND REQUIRED LOCAL
MATCH**

January 11, 2023

CONTENTS

<i>DLAS Document Summary</i>	2
<i>Executive Summary</i>	2
<i>Fiscal Year 2022 Required Local Effort for the Standards of Quality</i>	4
<i>Fiscal Year 2023 Budgeted Required Local Effort for the Standards of Quality</i>	9
<i>Fiscal Year 2022 Required Local Match for Incentive and Lottery Accounts</i>	14
<i>Fiscal Year 2023 Budgeted Required Local Match for Incentive and Lottery Accounts</i>	19
<i>Participation in Optional Programs with Local Match Requirements</i>	24

DLAS DOCUMENT SUMMARY

DLAS DOCUMENT

Actual Fiscal Year 2022 Required Local Effort and Required Local Match; Certification of Budgeted Fiscal Year 2023 Required Local Effort and Required Local Match

AUTHOR

Virginia Department of Education

ENABLING AUTHORITY

Section 22.1-07, *Code of Virginia*

PREFACE

Section 22.1-97, *Code of Virginia*, directs the Superintendent of Public Instruction to provide a report annually to the House Committees on Appropriations and Education and the Senate Committees on Finance and Education and Health on the degree to which each school division has met, failed to meet, or surpassed its required local expenditure in support of the Standards of Quality (SOQ).

Virginia Department of Education budget staff prepared the report based on Annual School Report Financial Section (ASRFIN) data submitted by school divisions for fiscal year 2022, and certifications of budgeted local expenditures submitted by school divisions for fiscal year 2023.

EXECUTIVE SUMMARY

Pursuant to the requirements of Section 22.1-97, *Code of Virginia*, the Virginia Department of Education collected data from school divisions on the actual local funding effort in support of the Standards of Quality for fiscal year 2022, through the 2021-2022 Annual School Report Financial Section (ASRFIN). School divisions were also required to certify that local funds were at the required level in support of the Standards of Quality for fiscal year 2023.

One school division did not submit its ASRFIN to the Virginia Department of Education at the time this report was drafted.

This report provides the results of calculations made to ensure that each school division has expended sufficient local funds to support its required local effort. The purpose of required local effort is to ensure that each school division has sufficient local operational expenditures to support its local share of the cost of the Standards of Quality. Fiscal year 2022 calculations are

based on actual local operational expenditures. 134 of 134 reporting school divisions met required local effort for fiscal Year 2022.

Item 137, Chapter 2, 2022 Virginia Acts of Assembly, requires divisions to certify “that sufficient local funds have been budgeted to meet all state required local effort and required local match amounts.” All school divisions certified that they have budgeted local operational funds sufficient to meet budgeted required local effort for fiscal year 2023. School divisions whose local appropriations for fiscal year 2023 are only slightly in excess of the amount required to maintain local effort for the Standards of Quality have been advised to review their average daily membership on a monthly basis during the fiscal year to ensure sufficient local appropriations are available based on current enrollment levels.

Pursuant to Item 145, Chapter 1, 2022 Virginia Acts of Assembly, for fiscal year 2022, the Virginia Department of Education collected data on actual local expenditures for Incentive and Lottery programs that have a required local match. In fiscal year 2022, school divisions were required to report on local expenditures to support the actual required local match for each of the applicable accounts: At Risk; Virginia Preschool Initiative; K-3 Primary Class Size Reduction; Compensation Supplement; Infrastructure & Operations Per Pupil Fund; Math/Reading Instructional Specialist Initiative; and Early Reading Specialist Initiative. 134 of 134 reporting school divisions reported certified actual local operational expenditures sufficient to meet required local match for the programs in which they elected to participate in fiscal year 2022.

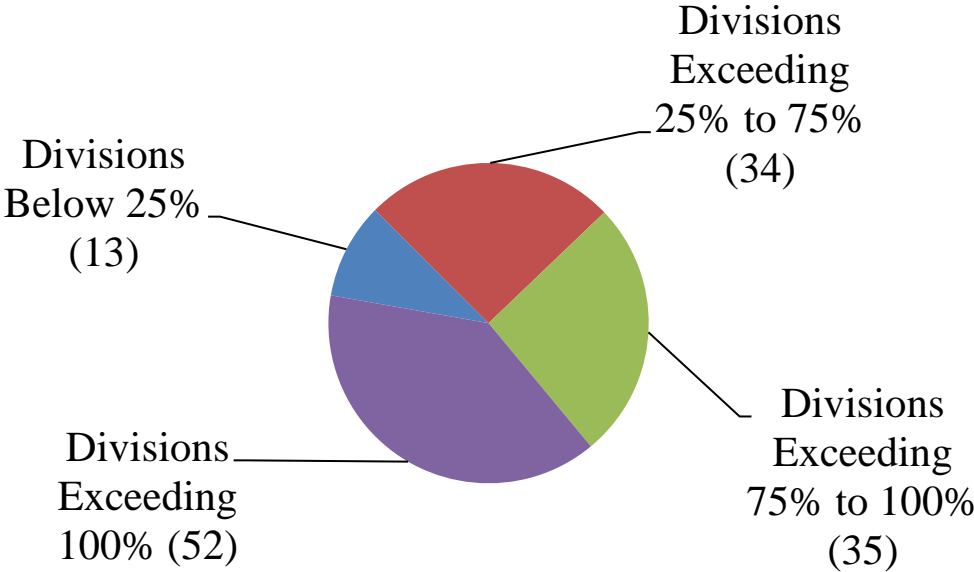
For fiscal year 2023, all school divisions have submitted the required information to certify their budgeted required local match for Incentive and Lottery accounts (i.e., At-Risk, Compensation Supplement, Virginia Preschool Initiative, Infrastructure & Operations Per Pupil Fund, K-3 Primary Class Size Reduction, Math/Reading Instructional Specialist Initiative, and Early Reading Specialists Initiative). All school divisions certified that they have budgeted local operational funds sufficient to meet budgeted required local match for all Incentive and Lottery-funded accounts in which they have elected to participate in fiscal year 2023.

FISCAL YEAR 2022 REQUIRED LOCAL EFFORT FOR THE STANDARDS OF QUALITY

134 of 134 reporting school divisions exceeded required local effort for fiscal year 2022. The range of local support in excess of the required amount is:

- Low – Giles – 5.39% in excess of the required amount
- High – Loudoun – 216.97% in excess of the required amount
- The average local operational expenditure in excess of the required level for FY 2022: 90.54%

Distribution - Percent of FY22 Actual Local Expenditures for Operations Above Required Local Effort for SOQ



**FY 2022 Actual Required Local Effort (RLE) for the Standards of Quality
Compared to Actual Local Expenditures for Operations**

RLE Based on Chapter 1, 2022 Special Session I Acts of Assembly, and
Final March 31, 2022, Average Daily Membership (ADM)

Div. Num.	Division Name	FY 2022 Required Local Effort¹	FY 2022 Actual Local Expenditures for Operations²	FY 2022 Actual Local Expenditures for Operations Above RLE	Percent of FY 2022 Actual Local Expenditures for Operations Above RLE
001	ACCOMACK	12,082,517	14,643,056	2,560,539	21.19%
002	ALBEMARLE	59,567,524	170,878,367	111,310,843	186.86%
003	ALLEGHANY	3,834,124	8,896,931	5,062,807	132.05%
004	AMELIA	4,026,356	6,715,129	2,688,773	66.78%
005	AMHERST	8,826,338	13,002,528	4,176,190	47.32%
006	APPOMATTOX	5,019,371	5,507,034	487,663	9.72%
007	ARLINGTON	160,863,899	457,833,127	296,969,228	184.61%
008	AUGUSTA	22,997,114	46,115,003	23,117,889	100.53%
009	BATH	3,490,538	7,480,709	3,990,171	114.31%
010	BEDFORD	17,674,663	36,820,835	19,146,172	108.33%
011	BLAND	1,849,218	2,486,077	636,859	34.44%
012	BOTETOURT	11,994,788	25,353,785	13,358,997	111.37%
013	BRUNSWICK	5,026,608	7,523,053	2,496,445	49.66%
014	BUCHANAN	5,327,540	6,380,049	1,052,509	19.76%
015	BUCKINGHAM	4,810,452	7,665,787	2,855,335	59.36%
016	CAMPBELL	14,677,273	27,094,779	12,417,506	84.60%
017	CAROLINE	10,032,566	15,086,649	5,054,083	50.38%
018	CARROLL	6,813,970	11,281,900	4,467,930	65.57%
019	CHARLES CITY	2,597,809	5,839,299	3,241,490	124.78%
020	CHARLOTTE	3,138,486	4,755,898	1,617,412	51.53%
021	CHESTERFIELD	151,234,534	279,577,731	128,343,197	84.86%
022	CLARKE	7,608,075	13,605,469	5,997,394	78.83%
023	CRAIG	1,310,688	1,767,182	456,494	34.83%
024	CULPEPER	21,247,994	27,755,177	6,507,183	30.62%
025	CUMBERLAND	2,545,668	3,113,118	567,450	22.29%
026	DICKENSON	3,672,525	6,635,716	2,963,191	80.69%
027	DINWIDDIE	8,947,089	15,372,416	6,425,327	71.81%
028	ESSEX	5,578,670	7,009,777	1,431,107	25.65%
029	FAIRFAX	890,342,545	2,056,543,831	1,166,201,286	130.98%
030	FAUQUIER	45,949,346	87,480,764	41,531,418	90.39%
031	FLOYD	4,057,284	7,720,166	3,662,882	90.28%
032	FLUVANNA	8,932,290	17,273,024	8,340,734	93.38%
033	FRANKLIN	16,787,997	35,213,899	18,425,902	109.76%
034	FREDERICK	40,224,635	92,964,562	52,739,927	131.11%
035	GILES	7,409,061	7,808,666	399,605	5.39%
036	GLOUCESTER	13,063,265	28,499,286	15,436,021	118.16%
037	GOOCHLAND	13,964,426	25,472,042	11,507,616	82.41%
038	GRAYSON	4,237,104	5,039,570	802,466	18.94%
039	GREENE	6,599,771	13,184,457	6,584,686	99.77%
040	GREENSVILLE	2,283,874	6,261,501	3,977,627	174.16%
041	HALIFAX	10,894,122	13,695,801	2,801,679	25.72%
042	HANOVER	52,385,246	95,912,687	43,527,441	83.09%

**FY 2022 Actual Required Local Effort (RLE) for the Standards of Quality
Compared to Actual Local Expenditures for Operations**

RLE Based on Chapter 1, 2022 Special Session I Acts of Assembly, and
Final March 31, 2022, Average Daily Membership (ADM)

Div. Num.	Division Name	FY 2022 Required Local Effort¹	FY 2022 Actual Local Expenditures for Operations²	FY 2022 Actual Local Expenditures for Operations Above RLE	Percent of FY 2022 Actual Local Expenditures for Operations Above RLE
043	HENRICO	146,543,440	323,309,003	176,765,563	120.62%
044	HENRY	10,739,215	16,374,110	5,634,895	52.47%
045	HIGHLAND	1,838,571	2,027,122	188,551	10.26%
046	ISLE OF WIGHT	15,183,486	26,748,213	11,564,727	76.17%
047	JAMES CITY	39,147,373	78,768,058	39,620,685	101.21%
048	KING GEORGE	11,420,370	17,406,723	5,986,353	52.42%
049	KING QUEEN	3,072,539	3,924,712	852,173	27.74%
050	KING WILLIAM	4,972,278	9,604,965	4,632,687	93.17%
051	LANCASTER	5,762,722	11,340,719	5,577,997	96.79%
052	LEE	3,753,732	7,127,362	3,373,630	89.87%
053	LOUDOUN	324,729,619	1,029,293,704	704,564,085	216.97%
054	LOUISA	19,126,272	43,504,402	24,378,130	127.46%
055	LUNENBURG	3,206,871	3,947,407	740,536	23.09%
056	MADISON	5,238,656	9,470,562	4,231,906	80.78%
057	MATHEWS	3,657,024	9,286,875	5,629,851	153.95%
058	MECKLENBURG	12,752,056	21,005,587	8,253,531	64.72%
059	MIDDLESEX	5,377,877	9,096,720	3,718,843	69.15%
060	MONTGOMERY	26,024,109	53,902,311	27,878,202	107.12%
062	NELSON	6,089,483	15,265,019	9,175,536	150.68%
063	NEW KENT	9,449,638	14,817,015	5,367,377	56.80%
065	NORTHAMPTON	4,663,132	9,330,876	4,667,744	100.10%
066	NORTHUMBERLAND	6,186,404	12,972,020	6,785,616	109.69%
067	NOTTOWAY	3,405,845	4,364,202	958,357	28.14%
068	ORANGE	13,683,729	19,815,898	6,132,169	44.81%
069	PAGE	6,862,294	8,337,112	1,474,818	21.49%
070	PATRICK	4,633,265	6,815,332	2,182,067	47.10%
071	PITTSYLVANIA	13,326,354	18,521,886	5,195,532	38.99%
072	POWHATAN	13,076,930	24,356,452	11,279,522	86.26%
073	PRINCE EDWARD	4,519,968			
074	PRINCE GEORGE	10,339,379	16,547,468	6,208,089	60.04%
075	PRINCE WILLIAM	253,594,384	664,195,857	410,601,473	161.91%
077	PULASKI	9,130,661	15,733,124	6,602,463	72.31%
078	RAPPAHANNOCK	4,376,645	9,089,838	4,713,193	107.69%
079	RICHMOND	3,059,670	4,666,533	1,606,863	52.52%
080	ROANOKE	33,952,925	79,564,940	45,612,015	134.34%
081	ROCKBRIDGE	7,381,413	14,939,481	7,558,068	102.39%
082	ROCKINGHAM	27,586,128	58,838,225	31,252,097	113.29%
083	RUSSELL	5,731,575	7,044,026	1,312,451	22.90%
084	SCOTT	5,143,662	5,998,323	854,661	16.62%
085	SHENANDOAH	15,225,204	28,458,153	13,232,949	86.91%
086	SMYTH	6,296,199	9,397,565	3,101,366	49.26%

**FY 2022 Actual Required Local Effort (RLE) for the Standards of Quality
Compared to Actual Local Expenditures for Operations**

RLE Based on Chapter 1, 2022 Special Session I Acts of Assembly, and
Final March 31, 2022, Average Daily Membership (ADM)

Div. Num.	Division Name	FY 2022 Required Local Effort¹	FY 2022 Actual Local Expenditures for Operations²	FY 2022 Actual Local Expenditures for Operations Above RLE	Percent of FY 2022 Actual Local Expenditures for Operations Above RLE
087	SOUTHAMPTON	5,854,992	11,070,471	5,215,479	89.08%
088	SPOTSYLVANIA	62,935,736	113,949,369	51,013,633	81.06%
089	STAFFORD	72,098,572	135,715,416	63,616,844	88.24%
090	SURRY	4,608,068	11,880,059	7,271,991	157.81%
091	SUSSEX	2,874,393	7,921,460	5,047,067	175.59%
092	TAZEWELL	9,903,694	14,778,267	4,874,573	49.22%
093	WARREN	15,210,015	27,591,947	12,381,932	81.41%
094	WASHINGTON	15,473,718	32,248,661	16,774,943	108.41%
095	WESTMORELAND	6,616,778	12,145,240	5,528,462	83.55%
096	WISE	9,186,289	11,356,883	2,170,594	23.63%
097	WYTHE	8,319,286	13,278,177	4,958,891	59.61%
098	YORK	32,941,505	58,646,614	25,705,109	78.03%
101	ALEXANDRIA	92,309,015	232,522,422	140,213,407	151.90%
102	BRISTOL	4,821,141	8,208,660	3,387,519	70.26%
103	BUENA VISTA	1,203,908	2,539,018	1,335,110	110.90%
104	CHARLOTTESVILLE	18,744,472	57,249,059	38,504,587	205.42%
106	COLONIAL HEIGHTS	8,150,593	19,610,271	11,459,678	140.60%
107	COVINGTON	2,013,870	3,105,514	1,091,644	54.21%
108	DANVILLE	10,401,009	24,210,414	13,809,405	132.77%
109	FALLS CHURCH	16,225,628	47,781,421	31,555,793	194.48%
110	FREDERICKSBURG	14,981,969	27,049,846	12,067,877	80.55%
111	GALAX	2,580,382	4,107,549	1,527,167	59.18%
112	HAMPTON	35,349,608	74,029,840	38,680,232	109.42%
113	HARRISONBURG	16,674,878	32,809,269	16,134,391	96.76%
114	HOPEWELL	5,690,686	10,928,977	5,238,291	92.05%
115	LYNCHBURG	18,985,527	37,471,472	18,485,945	97.37%
116	MARTINSVILLE	2,624,716	4,623,656	1,998,940	76.16%
117	NEWPORT NEWS	50,434,950	117,490,424	67,055,474	132.95%
118	NORFOLK	53,158,247	135,198,112	82,039,865	154.33%
119	NORTON	1,574,451	1,720,087	145,636	9.25%
120	PETERSBURG	7,029,139	9,012,475	1,983,336	28.22%
121	PORTSMOUTH	21,298,278	50,311,798	29,013,520	136.22%
122	RADFORD	4,795,548	11,913,127	7,117,579	148.42%
123	RICHMOND CITY	74,286,499	164,529,756	90,243,257	121.48%
124	ROANOKE CITY	29,837,389	56,006,132	26,168,743	87.70%
126	STAUNTON	6,598,838	12,122,912	5,524,074	83.71%
127	SUFFOLK	32,841,781	62,928,546	30,086,765	91.61%
128	VIRGINIA BEACH	172,136,969	409,982,992	237,846,023	138.17%
130	WAYNESBORO	6,933,833	14,478,320	7,544,487	108.81%
131	WILLIAMSBURG	5,099,172	9,643,863	4,544,691	89.13%
132	WINCHESTER	12,814,849	34,554,461	21,739,612	169.64%

**FY 2022 Actual Required Local Effort (RLE) for the Standards of Quality
Compared to Actual Local Expenditures for Operations**

RLE Based on Chapter 1, 2022 Special Session I Acts of Assembly, and
Final March 31, 2022, Average Daily Membership (ADM)

Div. Num.	Division Name	FY 2022 Required Local Effort¹	FY 2022 Actual Local Expenditures for Operations²	FY 2022 Actual Local Expenditures for Operations Above RLE	Percent of FY 2022 Actual Local Expenditures for Operations Above RLE
134	FAIRFAX CITY	18,195,816	41,312,464	23,116,648	127.04%
135	FRANKLIN CITY	1,892,781	4,452,421	2,559,640	135.23%
136	CHESAPEAKE	97,657,399	205,352,683	107,695,284	110.28%
137	LEXINGTON	1,721,850	3,073,247	1,351,397	78.49%
138	EMPORIA	1,468,675	4,150,899	2,682,224	182.63%
139	SALEM	8,992,786	19,754,643	10,761,857	119.67%
142	POQUOSON	5,027,804	9,957,668	4,929,864	98.05%
143	MANASSAS	20,994,190	45,706,543	24,712,353	117.71%
144	MANASSAS PARK	7,557,605	13,324,802	5,767,197	76.31%
202	COLONIAL BEACH	1,599,195	2,371,448	772,253	48.29%
207	WEST POINT	1,567,810	4,498,731	2,930,921	186.94%

¹ Required local effort for SOQ programs (Basic Aid; Gifted Education; Vocational Education; Special Education; Prevention, Intervention and Remediation; Fringe Benefits; English as a Second Language; Early Reading Intervention, SOL Algebra Readiness, and Textbooks) based on Chapter 1, 2022 Special Session I Acts of Assembly, and final March 31, 2022, Average Daily Membership.

² Local expenditures for operations are based on expenditures as reported by school divisions on the 2021-2022 Annual School Report Financial Section.

FISCAL YEAR 2023 BUDGETED REQUIRED LOCAL EFFORT FOR THE STANDARDS OF QUALITY

All school divisions certified that sufficient local funds have been budgeted to meet all required local effort amounts for SOQ programs in fiscal year 2023.

FY 2023 Budgeted Required Local Effort (RLE) for the Standards of Quality

RLE Based on Chapter 2, 2022 Special Session I Acts of Assembly, and
Projected March 31, 2023, Average Daily Membership (ADM)

Div. Num.	Division Name	FY 2023 Budgeted Required Local Effort¹	Has the Division Certified to Budgeting Local Funds Sufficient to Meet the FY 2023 Required Local Effort²
001	ACCOMACK	14,142,428	YES
002	ALBEMARLE	69,051,829	YES
003	ALLEGHANY HIGHLANDS	6,982,673	YES
004	AMELIA	4,690,540	YES
005	AMHERST	10,159,170	YES
006	APPOMATTOX	5,494,333	YES
007	ARLINGTON	186,691,362	YES
008	AUGUSTA	28,211,184	YES
009	BATH	3,964,670	YES
010	BEDFORD	20,476,529	YES
011	BLAND	2,219,286	YES
012	BOTETOURT	14,219,094	YES
013	BRUNSWICK	6,601,918	YES
014	BUCHANAN	5,369,120	YES
015	BUCKINGHAM	5,367,000	YES
016	CAMPBELL	16,809,014	YES
017	CAROLINE	11,998,335	YES
018	CARROLL	7,608,194	YES
019	CHARLES CITY	2,887,186	YES
020	CHARLOTTE	3,637,534	YES
021	CHESTERFIELD	172,419,383	YES
022	CLARKE	8,506,729	YES
023	CRAIG	1,724,603	YES
024	CULPEPER	23,708,027	YES
025	CUMBERLAND	3,291,687	YES
026	DICKENSON	3,945,838	YES
027	DINWIDDIE	10,412,442	YES
028	ESSEX	6,070,213	YES
029	FAIRFAX	1,017,419,761	YES
030	FAUQUIER	52,658,454	YES
031	FLOYD	4,812,019	YES
032	FLUVANNA	10,297,890	YES
033	FRANKLIN	19,325,948	YES
034	FREDERICK	46,772,041	YES
035	GILES	8,479,100	YES
036	GLOUCESTER	15,057,444	YES
037	GOOCHLAND	15,894,395	YES
038	GRAYSON	4,748,009	YES

FY 2023 Budgeted Required Local Effort (RLE) for the Standards of Quality

RLE Based on Chapter 2, 2022 Special Session I Acts of Assembly, and
Projected March 31, 2023, Average Daily Membership (ADM)

Div. Num.	Division Name	FY 2023 Budgeted Required Local Effort¹	Has the Division Certified to Budgeting Local Funds Sufficient to Meet the FY 2023 Required Local Effort²
039	GREENE	7,719,450	YES
040	GREENSVILLE	3,842,612	YES
041	HALIFAX	12,195,573	YES
042	HANOVER	61,230,129	YES
043	HENRICO	166,126,485	YES
044	HENRY	12,194,229	YES
045	HIGHLAND	2,270,587	YES
046	ISLE OF WIGHT	17,437,564	YES
047	JAMES CITY	42,143,510	YES
048	KING GEORGE	13,420,206	YES
049	KING QUEEN	3,275,961	YES
050	KING WILLIAM	5,081,228	YES
051	LANCASTER	6,513,085	YES
052	LEE	4,365,956	YES
053	LOUDOUN	374,657,874	YES
054	LOUISA	21,905,289	YES
055	LUNENBURG	3,625,063	YES
056	MADISON	6,037,769	YES
057	MATHEWS	4,500,229	YES
058	MECKLENBURG	14,423,609	YES
059	MIDDLESEX	6,312,056	YES
060	MONTGOMERY	31,021,446	YES
062	NELSON	7,017,817	YES
063	NEW KENT	10,802,242	YES
065	NORTHAMPTON	5,908,476	YES
066	NORTHUMBERLAND	7,226,546	YES
067	NOTTOWAY	3,865,591	YES
068	ORANGE	16,083,039	YES
069	PAGE	7,993,445	YES
070	PATRICK	5,206,410	YES
071	PITTSYLVANIA	15,971,457	YES
072	POWHATAN	17,519,489	YES
073	PRINCE EDWARD	5,328,344	YES
074	PRINCE GEORGE	11,399,483	YES
075	PRINCE WILLIAM	294,649,607	YES
077	PULASKI	10,850,888	YES
078	RAPPAHANNOCK	4,875,876	YES
079	RICHMOND	3,387,685	YES

FY 2023 Budgeted Required Local Effort (RLE) for the Standards of Quality

RLE Based on Chapter 2, 2022 Special Session I Acts of Assembly, and
Projected March 31, 2023, Average Daily Membership (ADM)

Div. Num.	Division Name	FY 2023 Budgeted Required Local Effort¹	Has the Division Certified to Budgeting Local Funds Sufficient to Meet the FY 2023 Required Local Effort²
080	ROANOKE	38,144,654	YES
081	ROCKBRIDGE	8,960,162	YES
082	ROCKINGHAM	31,702,855	YES
083	RUSSELL	6,472,813	YES
084	SCOTT	6,040,865	YES
085	SHENANDOAH	17,051,153	YES
086	SMYTH	7,225,453	YES
087	SOUTHAMPTON	6,567,984	YES
088	SPOTSYLVANIA	71,445,623	YES
089	STAFFORD	82,976,451	YES
090	SURRY	5,585,251	YES
091	SUSSEX	3,288,124	YES
092	TAZEWELL	11,177,861	YES
093	WARREN	17,589,895	YES
094	WASHINGTON	17,419,359	YES
095	WESTMORELAND	7,710,347	YES
096	WISE	10,209,474	YES
097	WYTHE	9,716,011	YES
098	YORK	36,407,110	YES
101	ALEXANDRIA	106,662,431	YES
102	BRISTOL	5,499,901	YES
103	BUENA VISTA	1,443,161	YES
104	CHARLOTTESVILLE	22,458,441	YES
106	COLONIAL HEIGHTS	9,493,682	YES
108	DANVILLE	11,751,468	YES
109	FALLS CHURCH	18,139,391	YES
110	FREDERICKSBURG	18,538,869	YES
111	GALAX	2,808,537	YES
112	HAMPTON	39,857,356	YES
113	HARRISONBURG	20,062,853	YES
114	HOPEWELL	6,128,871	YES
115	LYNCHBURG	22,004,539	YES
116	MARTINSVILLE	2,960,351	YES
117	NEWPORT NEWS	57,371,776	YES
118	NORFOLK	59,972,602	YES
119	NORTON	1,789,131	YES
120	PETERSBURG	8,059,554	YES
121	PORTSMOUTH	24,679,614	YES

FY 2023 Budgeted Required Local Effort (RLE) for the Standards of Quality

RLE Based on Chapter 2, 2022 Special Session I Acts of Assembly, and
Projected March 31, 2023, Average Daily Membership (ADM)

Div. Num.	Division Name	FY 2023 Budgeted Required Local Effort ¹	Has the Division Certified to Budgeting Local Funds Sufficient to Meet the FY 2023 Required Local Effort ²
122	RADFORD	4,446,390	YES
123	RICHMOND CITY	87,599,794	YES
124	ROANOKE CITY	37,832,975	YES
126	STAUNTON	8,211,461	YES
127	SUFFOLK	36,523,784	YES
128	VIRGINIA BEACH	197,075,218	YES
130	WAYNESBORO	8,019,271	YES
131	WILLIAMSBURG	5,786,731	YES
132	WINCHESTER	14,197,765	YES
134	FAIRFAX CITY	20,195,807	YES
135	FRANKLIN CITY	2,360,919	YES
136	CHESAPEAKE	109,776,072	YES
137	LEXINGTON	1,940,301	YES
138	EMPORIA	1,542,524	YES
139	SALEM	10,477,950	YES
142	POQUOSON	5,693,591	YES
143	MANASSAS	24,124,460	YES
144	MANASSAS PARK	8,510,704	YES
202	COLONIAL BEACH	2,015,270	YES
207	WEST POINT	1,762,179	YES

¹ Required local effort for SOQ programs (Basic Aid; Gifted Education; Vocational Education; Special Education; Prevention, Intervention and Remediation; Fringe Benefits; English as a Second Language; Textbooks; SOL Algebra Readiness; and Early Reading Intervention) based on Chapter 2, 2022 Special Session I Acts of Assembly, and projected March 31, 2023, Average Daily Membership.

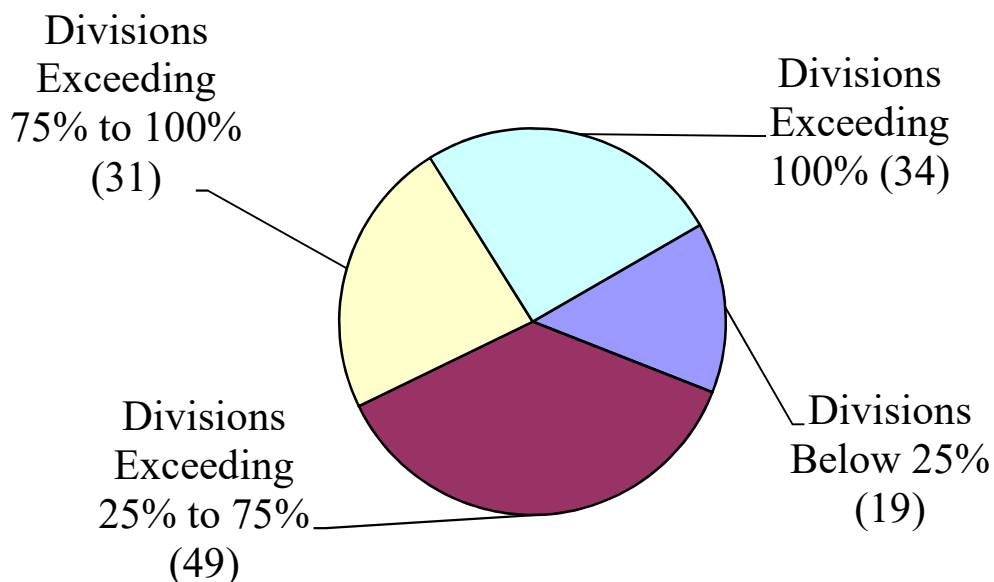
² As certified by school divisions in the FY 2023 Budgeted Required Local Effort and Required Local Match data collection.

FISCAL YEAR 2022 REQUIRED LOCAL MATCH FOR INCENTIVE AND LOTTERY ACCOUNTS

133 of 133 reporting school divisions met required local match for all Incentive and Lottery accounts in which they elected to participate in fiscal year 2022. The funds used to meet required local match are actual local operational expenditures that are above those used to meet required local effort on the Standards of Quality. The range of actual local support in excess of the required amounts for local effort and local match is:

- Low – Norton – 4.78% in excess of the required amount
- High – Loudoun – 203.75% in excess of the required amount
- The average actual local operational expenditure in excess of the required level for fiscal year 2022: 75.47%

Distribution - Percent of FY22 Actual Local Expenditures for Operations Above Required Local Effort and Required Local Match



FY 2022 Actual Required Local Match (RLM) for Incentive and Lottery Accounts Compared to Actual Local Expenditures for Operations Above Required Local Effort (RLE)

RLM Based on Chapter 1, 2022 Special Session I Acts of Assembly,
Final March 31, 2022, Average Daily Membership (ADM), and Actual Participation Data

Div. Num.	Division Name	FY 2022 Required Local Match ¹	FY 2022 Actual Local Expenditures for Operations Above RLE ²	FY 2022 Actual Local Expenditures for Operations Above RLE and RLM	Percent of FY 2022 Actual Local Expenditures for Operations Above RLE and RLM
001	ACCOMACK	2,272,260	3,984,654	1,712,394	11.93%
002	ALBEMARLE	5,531,893	113,232,212	107,700,319	165.44%
003	ALLEGHANY	609,759	5,642,237	5,032,478	113.25%
004	AMELIA	628,032	3,182,243	2,554,211	54.88%
005	AMHERST	1,453,573	5,232,603	3,779,030	36.76%
006	APPOMATTOX	790,723	1,200,047	409,324	7.05%
007	ARLINGTON	13,746,527	300,317,815	286,571,288	164.12%
008	AUGUSTA	3,199,868	26,063,660	22,863,792	87.28%
009	BATH	396,172	4,190,171	3,793,999	97.61%
010	BEDFORD	2,158,513	21,838,771	19,680,258	99.23%
011	BLAND	201,698	836,859	635,161	30.97%
012	BOTETOURT	881,716	14,501,876	13,620,160	105.78%
013	BRUNSWICK	1,323,626	2,914,386	1,590,760	25.05%
014	BUCHANAN	1,007,303	1,755,825	748,522	11.82%
015	BUCKINGHAM	1,036,665	3,463,579	2,426,914	41.51%
016	CAMPBELL	2,365,632	14,942,891	12,577,259	73.80%
017	CAROLINE	1,663,572	6,280,218	4,616,646	39.47%
018	CARROLL	1,276,891	5,670,973	4,394,082	54.31%
019	CHARLES CITY	385,916	3,457,305	3,071,389	102.94%
020	CHARLOTTE	530,810	2,162,820	1,632,010	44.48%
021	CHESTERFIELD	15,312,811	145,104,895	129,792,084	77.93%
022	CLARKE	494,073	6,350,897	5,856,824	72.29%
023	CRAIG	166,079	656,494	490,415	33.21%
024	CULPEPER	2,978,813	8,880,252	5,901,439	24.36%
025	CUMBERLAND	570,614	942,471	371,857	11.93%
026	DICKENSON	697,197	3,622,401	2,925,204	66.94%
027	DINWIDDIE	1,417,549	7,714,239	6,296,690	60.75%
028	ESSEX	1,226,958	1,756,201	529,243	7.78%
029	FAIRFAX	45,838,572	1,195,272,910	1,149,434,338	122.78%
030	FAUQUIER	3,460,859	43,482,939	40,022,080	81.00%
031	FLOYD	583,634	4,195,526	3,611,892	77.83%
032	FLUVANNA	866,315	9,244,594	8,378,279	85.50%
033	FRANKLIN	2,802,815	20,258,606	17,455,791	89.10%
034	FREDERICK	3,561,298	56,152,231	52,590,933	120.11%
035	GILES	974,620	1,517,264	542,644	6.47%
036	GLOUCESTER	1,404,677	16,752,362	15,347,685	106.08%
037	GOOCHLAND	1,125,894	11,802,049	10,676,155	70.75%
038	GRAYSON	748,151	1,264,798	516,647	10.36%
039	GREENE	846,634	7,396,442	6,549,808	87.96%
040	GREENSVILLE	503,698	4,366,384	3,862,686	138.57%
041	HALIFAX	2,224,673	4,289,622	2,064,949	15.74%

FY 2022 Actual Required Local Match (RLM) for Incentive and Lottery Accounts Compared to Actual Local Expenditures for Operations Above Required Local Effort (RLE)

RLM Based on Chapter 1, 2022 Special Session I Acts of Assembly,
Final March 31, 2022, Average Daily Membership (ADM), and Actual Participation Data

Div. Num.	Division Name	FY 2022 Required Local Match¹	FY 2022 Actual Local Expenditures for Operations Above RLE²	FY 2022 Actual Local Expenditures for Operations Above RLE and RLM	Percent of FY 2022 Actual Local Expenditures for Operations Above RLE and RLM
042	HANOVER	3,431,921	47,270,982	43,839,061	78.54%
043	HENRICO	20,274,866	190,115,863	169,840,997	101.81%
044	HENRY	2,322,780	8,091,903	5,769,123	44.17%
045	HIGHLAND	225,144	388,551	163,407	7.92%
046	ISLE OF WIGHT	1,601,332	13,094,861	11,493,529	68.48%
047	JAMES CITY	3,541,255	41,713,731	38,172,476	89.42%
048	KING GEORGE	952,690	7,099,950	6,147,260	49.68%
049	KING QUEEN	653,734	1,151,669	497,935	13.36%
050	KING WILLIAM	330,944	5,165,847	4,834,903	91.17%
051	LANCASTER	1,165,479	5,860,235	4,694,756	67.76%
052	LEE	671,059	4,314,930	3,643,871	82.35%
053	LOUDOUN	19,152,891	719,814,696	700,661,805	203.75%
054	LOUISA	2,625,442	25,585,953	22,960,511	105.56%
055	LUNENBURG	679,556	1,301,794	622,238	16.01%
056	MADISON	613,547	4,605,965	3,992,418	68.22%
057	MATHEWS	322,037	5,829,851	5,507,814	138.42%
058	MECKLENBURG	2,641,948	9,570,784	6,928,836	45.01%
059	MIDDLESEX	933,831	4,054,061	3,120,230	49.44%
060	MONTGOMERY	3,059,218	30,622,567	27,563,349	94.77%
062	NELSON	934,534	9,476,423	8,541,889	121.61%
063	NEW KENT	612,629	6,131,270	5,518,641	54.84%
065	NORTHAMPTON	1,283,111	5,035,948	3,752,837	63.11%
066	NORTHUMBERLAND	1,181,959	7,074,180	5,892,221	79.97%
067	NOTTOWAY	812,818	1,560,263	747,445	17.72%
068	ORANGE	1,766,749	7,417,884	5,651,135	36.58%
069	PAGE	1,179,040	2,423,029	1,243,989	15.47%
070	PATRICK	795,483	3,031,063	2,235,580	41.18%
071	PITTSYLVANIA	2,436,281	7,882,806	5,446,525	34.55%
072	POWHATAN	845,715	12,205,505	11,359,790	81.59%
073	PRINCE EDWARD				
074	PRINCE GEORGE	1,168,565	8,214,392	7,045,827	61.23%
075	PRINCE WILLIAM	27,625,277	433,948,616	406,323,339	144.49%
077	PULASKI	1,580,651	7,866,843	6,286,192	58.69%
078	RAPPAHANNOCK	470,547	4,913,193	4,442,646	91.65%
079	RICHMOND	550,741	2,032,574	1,481,833	41.04%
080	ROANOKE	2,972,717	49,510,823	46,538,106	126.03%
081	ROCKBRIDGE	988,402	8,199,152	7,210,750	86.15%
082	ROCKINGHAM	3,675,611	34,657,960	30,982,349	99.11%
083	RUSSELL	1,116,621	2,466,187	1,349,566	19.71%
084	SCOTT	600,732	2,012,864	1,412,132	24.58%
085	SHENANDOAH	2,280,445	14,931,045	12,650,600	72.27%

FY 2022 Actual Required Local Match (RLM) for Incentive and Lottery Accounts Compared to Actual Local Expenditures for Operations Above Required Local Effort (RLE)

RLM Based on Chapter 1, 2022 Special Session I Acts of Assembly,
Final March 31, 2022, Average Daily Membership (ADM), and Actual Participation Data

Div. Num.	Division Name	FY 2022 Required Local Match¹	FY 2022 Actual Local Expenditures for Operations Above RLE²	FY 2022 Actual Local Expenditures for Operations Above RLE and RLM	Percent of FY 2022 Actual Local Expenditures for Operations Above RLE and RLM
086	SMYTH	1,217,460	4,474,715	3,257,255	43.35%
087	SOUTHAMPTON	965,671	6,067,889	5,102,218	74.81%
088	SPOTSYLVANIA	6,910,561	57,240,914	50,330,353	72.06%
089	STAFFORD	5,836,602	71,748,928	65,912,326	84.57%
090	SURRY	776,973	7,471,991	6,695,018	124.33%
091	SUSSEX	877,072	5,369,437	4,492,365	119.75%
092	TAZEWELL	1,803,186	6,623,494	4,820,308	41.18%
093	WARREN	2,221,705	13,961,038	11,739,333	67.34%
094	WASHINGTON	2,461,824	18,775,023	16,313,199	90.95%
095	WESTMORELAND	1,510,906	5,997,123	4,486,217	55.20%
096	WISE	1,855,485	4,180,032	2,324,547	21.05%
097	WYTHE	1,325,717	6,145,564	4,819,847	49.97%
098	YORK	2,002,287	29,005,860	27,003,573	77.28%
101	ALEXANDRIA	13,666,597	142,491,701	128,825,104	121.56%
102	BRISTOL	1,114,676	4,132,312	3,017,636	50.84%
103	BUENA VISTA	197,583	1,615,774	1,418,191	101.19%
104	CHARLOTTESVILLE	3,628,862	39,650,132	36,021,270	161.00%
106	COLONIAL HEIGHTS	1,319,064	12,200,016	10,880,952	114.90%
107	COVINGTON	310,814	1,395,895	1,085,081	46.68%
108	DANVILLE	3,289,893	15,618,900	12,329,007	90.05%
109	FALLS CHURCH	628,837	31,793,749	31,164,912	184.91%
110	FREDERICKSBURG	2,570,119	12,743,079	10,172,960	57.96%
111	GALAX	577,511	1,965,475	1,387,964	43.95%
112	HAMPTON	7,147,833	45,007,323	37,859,490	89.09%
113	HARRISONBURG	4,045,818	18,281,474	14,235,656	68.70%
114	HOPEWELL	1,489,691	6,643,867	5,154,176	71.78%
115	LYNCHBURG	4,478,008	21,020,522	16,542,514	70.50%
116	MARTINSVILLE	778,164	2,628,740	1,850,576	54.38%
117	NEWPORT NEWS	11,200,115	74,933,757	63,733,642	103.40%
118	NORFOLK	13,886,474	91,188,299	77,301,825	115.30%
119	NORTON	302,401	392,087	89,686	4.78%
120	PETERSBURG	2,456,729	3,392,828	936,099	9.87%
121	PORTSMOUTH	5,025,560	33,394,062	28,368,502	107.77%
122	RADFORD	568,374	7,956,320	7,387,946	137.73%
123	RICHMOND CITY	21,116,838	96,577,514	75,460,676	79.10%
124	ROANOKE CITY	8,877,669	30,447,273	21,569,604	55.71%
126	STAUNTON	1,180,242	6,297,257	5,117,015	65.78%
127	SUFFOLK	5,156,486	34,339,704	29,183,218	76.80%
128	VIRGINIA BEACH	19,128,459	255,339,976	236,211,517	123.50%
130	WAYNESBORO	1,397,303	8,576,101	7,178,798	86.17%
131	WILLIAMSBURG	470,324	4,744,691	4,274,367	76.75%

FY 2022 Actual Required Local Match (RLM) for Incentive and Lottery Accounts Compared to Actual Local Expenditures for Operations Above Required Local Effort (RLE)

RLM Based on Chapter 1, 2022 Special Session I Acts of Assembly,
Final March 31, 2022, Average Daily Membership (ADM), and Actual Participation Data

Div. Num.	Division Name	FY 2022 Required Local Match¹	FY 2022 Actual Local Expenditures for Operations Above RLE²	FY 2022 Actual Local Expenditures for Operations Above RLE and RLM	Percent of FY 2022 Actual Local Expenditures for Operations Above RLE and RLM
132	WINCHESTER	2,666,319	22,931,035	20,264,716	130.90%
134	FAIRFAX CITY	881,256	23,348,853	22,467,597	117.77%
135	FRANKLIN CITY	608,759	2,829,616	2,220,857	88.78%
136	CHESAPEAKE	10,308,283	118,801,556	108,493,273	100.49%
137	LEXINGTON	105,434	1,551,397	1,445,963	79.13%
138	EMPORIA	326,643	2,954,505	2,627,862	146.37%
139	SALEM	920,848	11,783,405	10,862,557	109.57%
142	POQUOSON	273,095	5,458,762	5,185,667	97.83%
143	MANASSAS	3,481,505	26,828,630	23,347,125	95.39%
144	MANASSAS PARK	1,349,197	6,813,623	5,464,426	61.35%
202	COLONIAL BEACH	318,422	972,253	653,831	34.10%
207	WEST POINT	140,621	3,171,324	3,030,703	177.40%

¹ Required local match programs (At-Risk, Virginia Preschool Initiative, Early Reading Specialists Initiative, Math and Reading Specialists, Compensation Supplement, and K-3 Primary Class Size Reduction) based on Chapter 1, 2022 Special Session I General Assembly, Final March 31, 2022, Average Daily Membership, and actual participation data.

² As reported by school divisions on the 2021-2022 Annual School Report Financial Section. This figure includes actual local operational expenditures and actual expenditures for the Virginia Preschool Initiative. Local expenditures for operations can be used to meet local match requirements for Incentive and Lottery-funded accounts. Local expenditures for the Virginia Preschool Initiative can only be used to meet the local match requirements for that program.

FISCAL YEAR 2023 BUDGETED REQUIRED LOCAL MATCH FOR INCENTIVE AND LOTTERY ACCOUNTS

All school divisions certified that sufficient local funds have been budgeted to meet all required local match amounts for all Incentive and Lottery accounts in which they elected to participate in fiscal year 2023. The funds used to meet required local match are budgeted local operational expenditures that are above those used to meet required local effort on the Standards of Quality.

**FY 2023 Budgeted Required Local Match (RLM)
for Incentive and Lottery-funded Programs**

RLM Based on Chapter 2, 2022 Special Session I Acts of Assembly,
Projected March 31, 2023, Average Daily Membership (ADM), and Virginia Preschool Initiative Participation

Div. Num.	Division Name	FY 2023 Budgeted Required Local Match¹	Has the Division Certified to Budgeting Local Funds Sufficient to Meet the FY 2023 Required Local Match²
001	ACCOMACK	3,758,701	YES
002	ALBEMARLE	9,739,946	YES
003	ALLEGHANY HIGHLANDS	1,724,636	YES
004	AMELIA	1,108,804	YES
005	AMHERST	2,285,858	YES
006	APPOMATTOX	1,251,343	YES
007	ARLINGTON	23,405,021	YES
008	AUGUSTA	5,079,188	YES
009	BATH	645,355	YES
010	BEDFORD	3,785,949	YES
011	BLAND	369,844	YES
012	BOTETOURT	1,948,213	YES
013	BRUNSWICK	2,266,063	YES
014	BUCHANAN	1,479,104	YES
015	BUCKINGHAM	1,376,167	YES
016	CAMPBELL	3,741,948	YES
017	CAROLINE	2,626,432	YES
018	CARROLL	1,836,110	YES
019	CHARLES CITY	603,662	YES
020	CHARLOTTE	839,275	YES
021	CHESTERFIELD	29,482,617	YES
022	CLARKE	942,190	YES
023	CRAIG	287,015	YES
024	CULPEPER	4,785,595	YES
025	CUMBERLAND	1,341,733	YES
026	DICKENSON	987,632	YES
027	DINWIDDIE	2,284,542	YES
028	ESSEX	1,984,744	YES
029	FAIRFAX	131,958,606	YES
030	FAUQUIER	6,498,777	YES
031	FLOYD	896,166	YES
032	FLUVANNA	1,647,742	YES
033	FRANKLIN	4,294,521	YES
034	FREDERICK	7,315,627	YES
035	GILES	1,607,474	YES
036	GLOUCESTER	2,542,538	YES
037	GOOCHLAND	1,990,362	YES
038	GRAYSON	1,252,595	YES
039	GREENE	1,469,774	YES

**FY 2023 Budgeted Required Local Match (RLM)
for Incentive and Lottery-funded Programs**

RLM Based on Chapter 2, 2022 Special Session I Acts of Assembly,
Projected March 31, 2023, Average Daily Membership (ADM), and Virginia Preschool Initiative Participation

Div. Num.	Division Name	FY 2023 Budgeted Required Local Match¹	Has the Division Certified to Budgeting Local Funds Sufficient to Meet the FY 2023 Required Local Match²
040	GREENSVILLE	1,255,476	YES
041	HALIFAX	3,177,739	YES
042	HANOVER	7,570,245	YES
043	HENRICO	34,277,911	YES
044	HENRY	3,451,753	YES
045	HIGHLAND	300,045	YES
046	ISLE OF WIGHT	2,807,431	YES
047	JAMES CITY	6,244,177	YES
048	KING GEORGE	1,781,533	YES
049	KING QUEEN	1,115,982	YES
050	KING WILLIAM	606,647	YES
051	LANCASTER	1,814,921	YES
052	LEE	1,089,086	YES
053	LOUDOUN	41,608,945	YES
054	LOUISA	4,246,999	YES
055	LUNENBURG	1,030,411	YES
056	MADISON	1,004,788	YES
057	MATHEWS	734,095	YES
058	MECKLENBURG	3,833,505	YES
059	MIDDLESEX	1,336,840	YES
060	MONTGOMERY	5,407,795	YES
062	NELSON	1,393,434	YES
063	NEW KENT	1,315,366	YES
065	NORTHAMPTON	1,953,632	YES
066	NORTHUMBERLAND	1,734,762	YES
067	NOTTOWAY	1,230,634	YES
068	ORANGE	3,188,944	YES
069	PAGE	1,832,367	YES
070	PATRICK	1,261,878	YES
071	PITTSYLVANIA	3,845,988	YES
072	POWHATAN	1,903,831	YES
073	PRINCE EDWARD	1,871,979	YES
074	PRINCE GEORGE	2,004,974	YES
075	PRINCE WILLIAM	50,345,342	YES
077	PULASKI	2,451,610	YES
078	RAPPAHANNOCK	771,546	YES
079	RICHMOND	792,448	YES
080	ROANOKE	5,207,633	YES
081	ROCKBRIDGE	1,526,533	YES

**FY 2023 Budgeted Required Local Match (RLM)
for Incentive and Lottery-funded Programs**

RLM Based on Chapter 2, 2022 Special Session I Acts of Assembly,
Projected March 31, 2023, Average Daily Membership (ADM), and Virginia Preschool Initiative Participation

Div. Num.	Division Name	FY 2023 Budgeted Required Local Match¹	Has the Division Certified to Budgeting Local Funds Sufficient to Meet the FY 2023 Required Local Match²
082	ROCKINGHAM	5,685,654	YES
083	RUSSELL	1,737,925	YES
084	SCOTT	1,384,977	YES
085	SHENANDOAH	3,619,793	YES
086	SMYTH	1,872,843	YES
087	SOUTHAMPTON	1,232,861	YES
088	SPOTSYLVANIA	11,548,945	YES
089	STAFFORD	12,279,239	YES
090	SURRY	1,168,177	YES
091	SUSSEX	1,282,291	YES
092	TAZEWELL	2,788,820	YES
093	WARREN	3,532,120	YES
094	WASHINGTON	3,894,041	YES
095	WESTMORELAND	2,268,957	YES
096	WISE	2,706,627	YES
097	WYTHE	2,144,425	YES
098	YORK	3,998,147	YES
101	ALEXANDRIA	25,560,535	YES
102	BRISTOL	1,571,990	YES
103	BUENA VISTA	315,179	YES
104	CHARLOTTESVILLE	5,420,796	YES
106	COLONIAL HEIGHTS	2,393,264	YES
108	DANVILLE	4,383,446	YES
109	FALLS CHURCH	1,565,004	YES
110	FREDERICKSBURG	4,261,289	YES
111	GALAX	781,473	YES
112	HAMPTON	10,701,686	YES
113	HARRISONBURG	6,035,796	YES
114	HOPEWELL	2,123,195	YES
115	LYNCHBURG	6,881,837	YES
116	MARTINSVILLE	1,166,338	YES
117	NEWPORT NEWS	16,814,883	YES
118	NORFOLK	20,028,626	YES
119	NORTON	469,861	YES
120	PETERSBURG	3,564,665	YES
121	PORTSMOUTH	7,669,244	YES
122	RADFORD	813,758	YES
123	RICHMOND CITY	34,974,801	YES
124	ROANOKE CITY	13,678,110	YES

**FY 2023 Budgeted Required Local Match (RLM)
for Incentive and Lottery-funded Programs**

RLM Based on Chapter 2, 2022 Special Session I Acts of Assembly,
Projected March 31, 2023, Average Daily Membership (ADM), and Virginia Preschool Initiative Participation

Div. Num.	Division Name	FY 2023 Budgeted Required Local Match¹	Has the Division Certified to Budgeting Local Funds Sufficient to Meet the FY 2023 Required Local Match²
126	STAUNTON	1,836,948	YES
127	SUFFOLK	7,739,089	YES
128	VIRGINIA BEACH	33,945,681	YES
130	WAYNESBORO	2,170,936	YES
131	WILLIAMSBURG	899,176	YES
132	WINCHESTER	4,260,310	YES
134	FAIRFAX CITY	2,602,708	YES
135	FRANKLIN CITY	847,622	YES
136	CHESAPEAKE	18,599,750	YES
137	LEXINGTON	243,531	YES
138	EMPORIA	500,780	YES
139	SALEM	1,656,406	YES
142	POQUOSON	630,183	YES
143	MANASSAS	5,883,407	YES
144	MANASSAS PARK	2,188,912	YES
202	COLONIAL BEACH	502,538	YES
207	WEST POINT	248,080	YES

¹ Required local match programs (At-Risk, Virginia Preschool Initiative, K-3 Primary Class Size Reduction, Math/Reading Instructional Specialist Initiative, Compensation Supplement, and Early Reading Specialists Initiative) based on Chapter 2, 2022 Special Session I Acts of Assembly, and projected March 31, 2023, Average Daily Membership.

² As reported by school divisions on the FY 2023 Budgeted Required Local Effort and Required Local Match data collection. Divisions may not be eligible for all Required Local Match programs and may not elect to participate in all programs for which they are eligible. Divisions certify to budgeting local funds sufficient to meet the FY 2023 Required Local Match only for the programs in which they elect to participate.

PARTICIPATION IN OPTIONAL PROGRAMS WITH LOCAL MATCH REQUIREMENTS

Pursuant to Item 137, Paragraph B.10, Chapter 2, 2022 Special Session I Acts of Assembly, for fiscal year 2023, the Virginia Department of Education collected data on budgeted required local match for applicable Incentive and Lottery-funded accounts that require a local match.

As part of this data collection, school divisions also certified participation in certain Incentive and Lottery-funded accounts, as applicable. All school divisions have submitted completed reports and have certified their participation status for fiscal year 2023.

School divisions, if eligible for funding, either opted in or opted out of participating in the optional programs that have a required local match. If sufficient local operating expenditures were not available to meet local match requirements, then local school divisions requested additional local appropriation from the governing body prior to receiving state funds in fiscal year 2023.

The following information details by account the school division participation in Incentive and Lottery-funded accounts in fiscal year 2023:

	Number of Divisions Opting In	Number of Divisions That Must Request Additional Local Appropriation	Number of Divisions Not Eligible for Funding	Number of Divisions Opting Out
At Risk	133	0	0	1
Virginia Preschool Initiative (VPI)	129	0	2	3
Early Reading Specialists Initiative	24	0	109	1
K-3 Primary Class Size Reduction	126	0	8	0
Infrastructure & Operations Per Pupil Fund	133	0	0	1
Compensation Supplement	134	0	0	0
Math/Reading Instructional Specialist Initiative	8	0	125	1